

## LIGHTS A FEATURE

Electric Building's Array to Be Distinctive.

OFFICES ALREADY LEASED

New Railway Home to Be Completed by End of Year—Five Floors to Be Reserved for Company.

To tower as high as The Oregonian in the improvements of Alder street, from the new Meier & Frank building at Sixth street to the new block-stories of Olds, Wortman & King on Tenth street, the Electric building at Seventh and Alder streets is rising rapidly and will be ready for occupancy by the end of the year. Already its upper four floors, which will be reserved for offices, have been leased almost to the last apartment, despite the fact that the rental rates are regarded as the highest in the city. Doctors and lawyers will predominate among the tenants of the new structure, the site of which is regarded as ideal as a location for professional men.

Essentially, the Electric building will be the new home of the Portland Railway, Light & Power Company, the basement and the first five floors to be reserved for the railway. The basement will house the sub-power station, on the ground floor the store for electric fixtures and the like will be located and the four floors immediately above will be occupied by the railway offices.

Construction of the building will render it absolutely fireproof, brick and terra cotta to form the exterior, while the interior will be built of steel and reinforced concrete, this alone making the structure impervious to flame. Every floor of the entire nine stories will be of concrete, which will serve to make the offices sound proof as well as assuring greater safety. All of the window casings will be of copper.

Modern to the most minute details the Electric building will be beautiful as well as illuminating. In fact, the most distinctive feature in the West. The entire structure will be outlined by electric lights and an array of street lamps, unique in design, will face the structure on Alder and Seventh streets.

Two elevators will be installed in the building on the Alder-street side and another elevator will be placed on the Seventh-street side, which will be operated to the fifth floor for the convenience of the railway employees.

Steel of the new building is in place up to the third floor and construction, progressing while the power plant is in operation in the basement, is an interesting feature, thousands of people stopping daily to watch the structure rise under conditions which probably never before accompanied a building operation of such magnitude.

**CHURCH PLANS ARE READY**  
First English Evangelical Will Rise at Once.

Architects Claussen & Claussen have completed plans for the new edifice to be erected for the First English Evangelical Church at East Sixth and East Market streets, at a cost of \$10,000, exclusive of the furniture. It will occupy 25 by 65 feet, and the auditorium will contain a seating capacity sufficient to accommodate 500 people.

On the auditorium floor the pastor's study and the choir loft will be located. There will be four exterior entrances to the auditorium, the main entrance to be at the street intersection. The Sunday-school room will be in the basement, which will contain six separate classrooms, separated by rolling partitions, a primary room, two societies, a Gode design guides the plans of this structure, and its windows will be of art glass. Contracts will be let and work will probably start on the building the latter part of the month.

**TEACHING SUPPLY SHORT**  
University Unable to Supply Demand in State.

UNIVERSITY OF OREGON, EUGENE, Ore., Aug. 14.—(Special.)—The University of Oregon is experiencing its annual demand for men qualified to take country and town high school principalships, and finds the demand at present particularly difficult to fill, owing to the lack of material. These positions ordinarily pay not less than \$100 a month, and a number pay \$1000 for the "month" term. All university men available for this kind of work were taken early in the season, and if there had been twice as many qualified for these positions or prepared to teach special lines of work, such as mathematics and physics, there would have been no difficulty in placing them. The demand for teachers this year has also indicated that young men prepared to take charge of high school athletics, in addition to their regular subjects, are able to command some of the best positions.

**1847 GOLD EAGLE COMMON**  
Numismatist Explodes Yarn About Coin Being at Premium.

PORTLAND, Aug. 14.—(To the Editor.)—I noticed in The Oregonian of August 11 a dispatch from San Francisco under the heading "500 Coin for \$10 Fine," which is so much in error that I desire to make the following statement: The motto, "In God We Trust," was not placed on any gold eagles until 1868.

The 1847 eagles are very common, there having been 862,255 issued from the Philadelphia mint, and 57,929 from the New Orleans mint, being the largest number issued from the Philadelphia mint during any year before 1868, and by far the largest number issued from the New Orleans mint during any year. So persons who are induced to pay a premium for a 50 gold piece of 1847, for the reason that it does not bear this motto, are imposed on.

**Wyoming Sheep Quarantined.**  
WASHINGTON, Aug. 14.—Owing to the presence of an infectious disease, known as lip and leg disease, or necrobacillosis, the Secretary of Agriculture has ordered a quarantine, effective August 12, on the counties of Fremont, Natrona, Converse, Weston, Crooks, Sheridan, Johnson and Big Horn, in the state of Wyoming.



ELECTRIC BUILDING AT SEVENTH AND ALDER STREETS AS IT WILL APPEAR WHEN COMPLETED.

## GAIN, 21 PER CENT

Portland Offsets Loss and Attains 28th Place.

**BUILDING PROGRESS RAPID**  
For Half-Year Permits Exceed Corresponding Period of 1908 by \$1,285,929—Statistics of 36 Places Are Shown.

Of a list of 36 cities, nearly all of which are larger than Portland, this city occupies 28th place in building operations, according to data gleaned by the American Contractor, of Chicago, for the period beginning January 1, 1909, and ending August 1 of this year. Portland's actual gain is 21 per cent, represented by a total exceeding last year's operations by \$1,285,929. The figures are regarded as particularly encouraging, when it is considered that the building permits for last month showed a decrease of 12 per cent. In the last six months Portland has not only offset a loss, but exceeded the building permits of the corresponding half-year of 1908.

Cities	For the Half-Year		Per cent
	Jan. 1 to Aug. 1, 1909	Jan. 1 to Aug. 1, 1908	
Birmingham	1,099,158	1,251,181	29
Bridgeport	1,892,890	783,229	133
Chattanooga	479,833	3,699,712	24
Dallas	2,234,320	1,251,890	67
Denver	2,260,478	3,892,385	29
Detroit	7,520,080	8,817,250	38
Grand Rapids	1,968,851	859,828	32
Harrisburg	1,305,623	658,874	98
Hartford	1,847,475	1,065,865	82
Indianapolis	4,166,923	3,574,090	16
Kansas City	8,857,963	6,096,381	42

## BIG HOTEL TO RISE

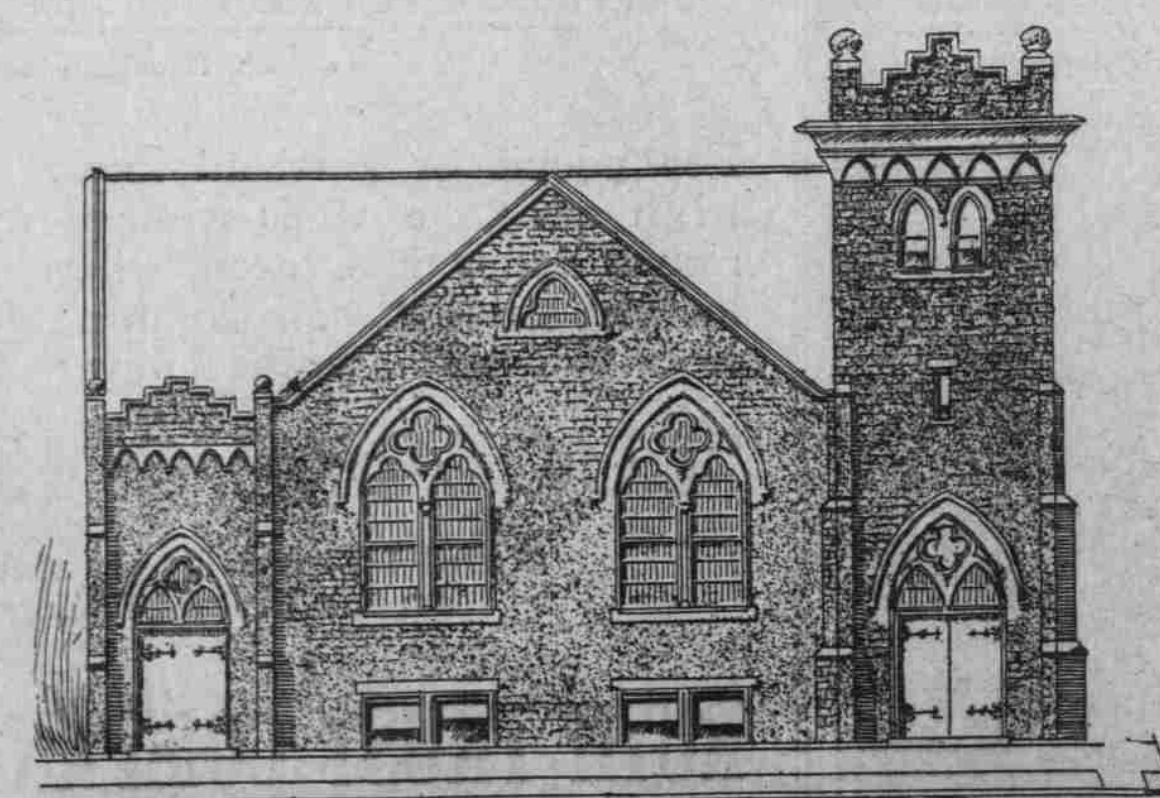
Edward Rolkin to Build 1000-Room Hostelry Here.

**SEVERAL SITES SCANNED**  
San Franciscan Who Conducts Ten Houses in Metropolis Is Impressed With Portland—Structure to Be Erected Soon.

Cities	July		Per cent
	1909	1908	
Birmingham	334,098	166,250	100
Bridgeport	435,096	148,541	295
Chattanooga	2,260,478	2,174,319	50
Cincinnati	820,995	814,810	1
Dallas	388,723	294,580	76
Denver	2,240,670	688,925	229
Detroit	1,901,850	849,950	88
Grand Rapids	546,244	250,310	60
Harrisburg	63,225	69,090	5
Hartford	1,890,233	21,794	84
Indianapolis	428,727	532,097	18
Kansas City	1,334,715	774,232	72
Louisville	275,967	469,387	59
Milwaukee	1,092,404	1,103,839	1
Minneapolis	1,901,180	945,485	6
Memphis	444,850	428,053	1
Mobile	79,850	129,156	38
New Haven	167,210	267,420	40
Newark	990,900	547,771	32
New Orleans	522,780	493,379	6
Philadelphia	17,267,584	18,674,842	26
Portland	4,784,914	3,876,899	64
San Francisco	2,848,775	1,874,485	129
St. Louis	2,891,273	14,328,907	41
St. Paul	2,891,273	1,068,105	165
Seattle	815,230	370,940	41
Spokane	3,897,590	2,012,480	33
Portland	911,570	1,028,264	12
St. Louis	2,098,939	2,751,226	34
Scranton	1,183,805	259,528	334
Seattle	1,270,410	1,012,111	26
St. Paul	282,116	426,690	34
South Bend	194,323	69,417	72
Syracuse	440,112	403,575	5
Salt Lake	490,500	424,320	15
Toledo	299,395	354,228	16
Worcester	422,272	186,748	126
Wilkes-Barre	180,885	206,408	12
Total	154,100,817	159,568,800	36

**Whitelaw Reid to Return.**  
LONDON, Aug. 14.—Whitelaw Reid, the American Ambassador at London, left Liverpool today on the steamer Mauritania for New York.

## BUILDING TO BE ERECTED ON EAST SIDE FOR FIRST ENGLISH EVANGELICAL CHURCH



STRUCTURE WILL COST \$10,000 AND HAVE SEATING CAPACITY TO ACCOMMODATE 500 PEOPLE.

# "ON TO RICHLAND"

**THEODORE ROOSEVELT** said, on the subject of Irrigation, that even five acres of land is enough to support a family and keep them busy.

**THIS IS ABSOLUTELY TRUE** The benefits derived from irrigation are now so well known that practical farmers from all over the East and from the South are selling out to invest in lands subject to irrigation.

**IT IS NOW SIMPLY A QUESTION OF LOCATION** We ask you to compare Richland with the older fruit districts—for instance, with HOOD RIVER to the southwest or WENATCHEE to the north. Five-year-old orchards pay from \$400 to \$1000 an acre net per year income.

**RICHLAND IS THE PEER** of them all, and when you see the Richland gardens, orchards and fields, and then come to realize that only a few years ago, nothing grew here but sagebrush, where fruits and flowers now ripen and bloom, you too will become enthusiastic as to the great future of this blessed spot.

## TEN GOOD REASONS WHY RICHLAND

should appeal to you as a place to live in, or as a safe place to make your investment return large profits to you.

- 1 The location is the most central for shipping facilities to all the large cities in the Pacific Northwest.
- 2 The soil is perfect for irrigation, being volcanic ash with an underlying bed of loose gravel; no hardpan to sour the soil.
- 3 The season is from 12 days to three weeks earlier than any other spot, insuring top-notch prices for everything you raise.
- 4 An ideal climate, 300 sunny days, long growing season, bringing the sugar in the fruit to maturity and perfect color to the surface.
- 5 No wet, sloppy and drizzling weather to keep you indoors; you can work outside nearly every day in the year.
- 6 The fruit and vegetables you pick in the afternoon, the railroads will put on the table of the consumer in Portland, Seattle or Spokane, next morning.
- 7 Richland has good schools, churches, stores and one thousand happy and prosperous people, and is settling up rapidly.
- 8 You can buy 5 acres of land, with perpetual water right, for only \$625—\$156.25 cash, or 10 acres for \$1250, only \$312.50 cash, balance 5 years to pay it in.
- 9 If you see the Richland Garden Farms, you will then know why over \$800,000 worth of land has been bought by satisfied buyers since last October.
- 10 Every Wednesday and Saturday, at 5 P. M., an excursion leaves our office, 110 Second st., over the North Bank R. R., for Richland. Automobiles will take you over the land and through the beautiful Kennebec Valley, free. You will enjoy the trip.

Call or write for illustrated booklet on Richland—it's interesting.

# RICHLAND LAND CO.

A. W. HOVER, Manager  
110 SECOND ST., Near Washington. Main 1743, A 1743  
Branch Offices: 120 N. Jersey Street, St. Johns. 312 Washington Street, Vancouver, Washington.

Owner of 10 hotels in San Francisco and one of the most enterprising hoteliers in the world, Edward Rolkin passed last week in Portland in quest of a suitable downtown block on which to erect a \$500,000 hostelry to contain 1000 rooms. Leaving for Seattle last night, the hotel man had data on several pieces of West Side property, but had made no selection. He will return in the near future, however, and contemplate breaking ground for his immense hostelry before the close of the year.

Once before, prior to the San Francisco disaster, Mr. Rolkin visited Portland with the construction of a big hotel in view, but sustaining the loss of \$1,900,000 in the great fire, the project was deferred. Now that he has recuperated from the financial shock incident to the California catastrophe, his interest in Portland has revived, and in the early part of 1910 it is more than probable his huge hotel will be running full blast. At the time of the San Francisco fire, Mr. Rolkin was conducting 22 hotels in the metropolis, and he was among the heaviest individual losers. He was also foremost in rebuilding the 10 hotels now being conducted under his guidance ranking as the most modern among the moderate-priced hostels.

Among the hotels owned at present by Mr. Rolkin in San Francisco are the Aragon, Winchester, Irving, Denver, Don Air, Central and Overland, which are situated at various points from Fourth and Market streets to the park.

"Portland has a great future," said Mr. Rolkin yesterday, "and I am anxious to become a pillar here as I have tried to be in San Francisco ever since 1868. Portland, for a long time, has been ripe for a big, moderate-priced hotel, and as I am in a condition today to undertake any big proposition, I intend to put up here a 1000-room hotel as soon as possible. I have passed several days with real estate men in viewing the city and have a number of West Side sites in view, but as yet have made no choice. I will require an entire block, and will build a structure to cost a half-million dollars.

"My hotel will be at least six stories high, fireproof throughout and most modern from basement to roof. And my rates will be from \$1 up, a reasonable hotel appearing to me to be Portland's greatest need. In my whole career I have never employed Japanese or Chinese in any of my hotels, and I will live up to that custom in Portland. I am going to Seattle from here, but do not intend to make any investment North, as on the whole coast I have not found any place steadier than Portland." I will be satisfied to confine my efforts to the building of an immense hotel here.

In his visit to Portland, Mr. Rolkin was a guest of friends at the Nortonia.

**Wandering Buoy Captured.**  
NEW YORK, Aug. 14.—The French bark Marschal de Turenne has arrived from London, bringing an American red can buoy, picked up July 27, 300 miles from New York. It had traveled nearly across the Atlantic. The lighthouse department reports that the buoy is one of a half dozen that slipped their moorings at different points on the Atlantic Coast.

## Where Can You Get Acreage Near Portland That Compares With

# METZGER ACRE TRACTS

**Either in Price, Location or Quality of the Soil?**

Only 30 minutes' ride from the Oregon Electric Railway's Jefferson-st. Station (Salem line) on Front st. Get off at METZGER STATION. Agents on the grounds every day. We are selling these acres at a very low price for a short time only—from \$250 and UP PER ACRE. We can convince you that this is THE BEST SOIL IN OREGON for all kinds of fruit, berries and walnuts. Excels in strawberries and cherries, any spot on the Pacific Coast.

For further particulars and plats call at our city office, 226 and 228 Front st., Portland, or at our branch office at Metzger Station. City Phones, Main 474 and A 1374. Branch office phone at Metzger, Main 6409.

## HERMAN METZGER, Owner

N. B.—THE PUBLIC IS INVITED TO VISIT METZGER NATURAL PARK, LOCATED ON METZGER ACRE TRACTS NEAR STATION. THIS IS THE MOST BEAUTIFUL PICNIC AND OUTING SPOT IN THE NORTHWEST.