

TULL & GIBBS, Inc.

"Everything to Furnish the Home Complete"
Women's, Misses' and Children's Ready-to-Wear Apparel

TULL & GIBBS, Inc.

DURING THE MONTHS OF JULY AND AUGUST STORE WILL OPEN AT 8:30 A. M. AND CLOSE AT 5:30 P. M.
GOODS PURCHASED MONDAY, TUESDAY AND WEDNESDAY WILL BE CHARGED ON JULY ACCOUNT

The Pre-Inventory Sale will be this Store's chief Attraction during the week—Bargains extraordinary in every Department

Preparatory to concluding our semi-annual stock-taking, every section of our store unites in a supreme effort to reduce their stocks in certain lines—a sale event of marked importance, in which is offered bargains the like of which have not been before the people of Portland and vicinity in many months. In previous sales it has been demonstrated that we fulfill to the last degree every announcement—the policy of this store—always. A comparison of the regular and pre-inventory values is sufficient to convince that during this six days' sale is the opportunity for economical selection. Mail orders will be promptly and carefully filled. Sale commences tomorrow.



**At Half Price
275 Tailored Cloth Suits
For Women, Misses and Little Women**

This is the announcement from our section of ready-to-wear apparel that is sure to interest every woman—an opportunity that none can afford to overlook. Whether contemplating selecting a suit or not it emphatically demands that you at least inspect this lot of 275 styles, some even suggestive of the styles for Fall and made of worsteds in the Fall colors and patterns. The handsome three-piece Suits really are artistic creations and to describe them in this announcement is out of the question, and we suggest that as there are very few instances where there are two alike that you make early selection. Two-piece and three-piece styles for women, misses, little women and juniors.

- | | | |
|---------------------------------|------------------------------|------------------------------|
| \$17.50 Suits at \$ 8.75 | \$30 Suits at \$15.00 | \$50 Suits at \$25.00 |
| \$20.00 Suits at \$10.00 | \$35 Suits at \$17.50 | \$55 Suits at \$22.50 |
| \$22.50 Suits at \$11.25 | \$40 Suits at \$20.00 | \$60 Suits at \$30.00 |
| \$25.00 Suits at \$12.50 | \$45 Suits at \$22.50 | \$75 Suits at \$37.50 |
| \$90.00 Suits at \$45.00 | | Values up to \$125.00 |

Pre-Inventory Bargains in Parlor, Library, Bedroom, Hall Pieces



\$37.50 PARLOR SETTEE FOR \$19.75
In the mahogany—Louis XV design.

\$195.00 PARLOR SUITE FOR \$112.50
A three-piece suite in the finest mahogany—Louis XV design.

\$195.00 PARLOR SUITE FOR \$115.00
This suite also comprised of three pieces, in the mahogany, Colonial design. Upholstered in green plush.

\$14.50 DESK FOR \$8.75
In the golden oak, polished finish. Has one drawer.

Some are sample and odd pieces, some discontinued patterns, and there are also a few complete suites. These pre-inventory values should encourage early selection.

\$16.00 MORRIS CHAIR FOR \$8.50
In the weathered oak. Cushions are covered in green velour.

\$16.75 DESK FOR \$8.50
Ladies' Writing Desk in the birdseye maple.

\$12.00 COUCH FOR \$6.75
Sample Couch with soft edge. Upholstered in floral pattern velour.

\$15.00 COUCH FOR \$7.50
Another sample Couch, with golden oak frame and upholstered in green verona velour.

\$13.75 DESK FOR \$7.75
An open pattern, in the golden oak.

\$16.50 MANICURE TABLE FOR \$9.75
In either the mahogany or golden oak. Two drawers.

\$16.00 SETTEE FOR \$8.75
In the mahogany finish. Solid seat and back.

\$25.00 BOOKCASE FOR \$14.95
Combination bookcase and desk, in the golden oak.

\$27.50 DESK FOR \$16.25
Home desk in the mahogany, dull finish, with wood drawer knobs.

\$21.00 BOOKCASE FOR \$12.50
In the mahogany finish. Has four adjustable shelves and two glass doors.

\$36.00 HALL RACK FOR \$19.50
In the golden oak. Has seat 38 inches wide, also large mirror and umbrella receptacle.

\$34.00 TOILET TABLE FOR \$17.50
\$35.00 TOILET TABLE FOR \$18.50
Both in the mahogany and two very attractive patterns.

\$48.50 LIBRARY TABLE FOR \$29.25
In the quarter-sawn golden oak. Colonial design. Has five drawers.

\$46.00 LIBRARY TABLE FOR \$29.50
Also in the quarter-sawn golden oak. Has 4 drawers, fitted with glass knobs.

\$52.50 BOOKCASE FOR \$27.75
Double combination style, with desk center. In the golden oak.

\$55.00 SETTEE FOR \$29.50
Reed Settee, upholstered in fine quality leather, in maroon shade.

\$52.00 BED DAVENPORT FOR \$31.50
Frame in weathered oak. Covered in verdure tapestry.

\$5.00 CENTER TABLE FOR \$3.25
\$5.00 CENTER TABLE FOR \$3.35
\$6.00 CENTER TABLE FOR \$3.95
\$6.75 CENTER TABLE FOR \$4.25

All in quarter-sawn golden oak; plain and fancy edge, tops and lower shelves.

\$10.00 FOLDING CARD TABLE FOR \$5.95
Burrows' folding table, in either oak or mahogany finish, 42-inch round top—covered in felt.

\$27.00 IRON BED FOR \$16.25
Full size bed in ivory enamel finish, with nine satin brass fillers.

\$32.00 IRON BED FOR \$16.75
Three-quarter size bed in ivory enamel finish. Trimmings in satin brass.

\$30.00 IRON BED FOR \$17.75
Full size pattern in rich gold bronze finish. Has nine satin brass fillers.

\$37.50 BRASS BED FOR \$21.75
Full size pattern in polished finish.

\$45.00 BRASS BED FOR \$24.50
Three-quarter size, in velvet-finished brass.

\$51.00 BRASS BED FOR \$29.75
Has two-inch continuous posts. Velvet finish. Full size pattern.

\$70.00 WALNUT BED FOR \$37.50
\$52.00 WALNUT BED FOR \$29.75
Both full size, in the beautifully figured Circassian walnut.

\$56.50 WALNUT CHIFFONIER \$34.50
In the Circassian walnut. Has wood knobs. Colonial design.

\$90.00 WALNUT CHIFFONIER \$47.50
A large, handsome piece in the Circassian walnut, with old copper trimmings.

\$145.00 BEDROOM SUITE FOR \$95.00
A very pretty suite in the white enamel, comprised of dresser, chiffonier, table and chair.



A Few Pre-Inventory Bargains FROM THE Basement Dept.

Glassware lower-priced than ever before. This special assortment is priced to close out.

- | | |
|--|--------------------------------------|
| 10c 4-in. Flat Plates, at, each. .2c | 35c Celery Holders at, each. .6c |
| 15c Olive Dishes at, each. .4c | 20c handled Jelly Dishes, ea. .6c |
| 15c Spoon Holders at, each. .4c | 15c Bon Bon Dishes, at, each. .8c |
| 10c 5-inch Nappies at, each. .4c | 35c Sugar Bowls, at, each. .6c |
| 25c Decorated Olive Dishes, ea. .4c | 20c Footed Jelly Dishes, each. .8c |
| 15c Pickle Dishes, each. .4c | 35c Vinegar Cruets, at, each. .8c |
| 15c Finger Bowls, each. .5c | 35c 8-inch Berry Bowls, each. 10c |
| 15c Salt and Pepper Shakers, at, pair. .5c | 75c Cov'd Butter Dishes, ea. 11c |
| 20c Creamers at, each. .5c | 40c Water Pitchers, at, ea. 12c |
| 15c 6-inch Nappies at, each. .5c | 60c dozen Fruit Dishes, doz. 20c |
| | \$1.50 green glass Tea Sets, set 20c |

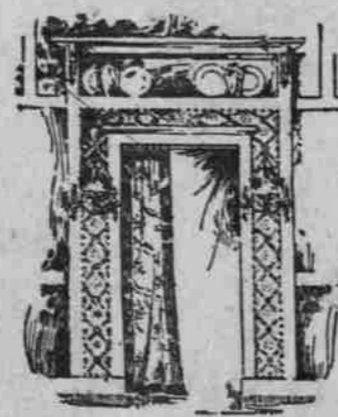
A FEW PIECES IN GRANITWARE PRICED TO CLOSE OUT—BROKEN LINES

15c 1 1/2-quart Buckets, at, ea. .5c	50c Lipped Sauce Pans, ea. .20c
20c 2-quart Buckets, at, each. .8c	\$1.00 8-quart Tea Kettles, at, each. .35c
25c 3-quart Buckets, at, each. 10c	

LAST WEEK OF THE FREE COOKING SCHOOL

Mrs. Wheelock will prepare interesting menus both mornings and afternoons of this week. Tomorrow's menu will be as follows: Commencing at 10:30—Creamed Rice with Prunes; Corn Cake; Plain Rolls. Commencing at 2:30—Nut Loaf Cake, Peas and Mushrooms in Fontaine Cups.

From the Drapery Section



- | | |
|---|--------|
| \$1.25 Cretonne Laundry Bags at. | 35c |
| \$3.50 Couch Covers, all new, at. | \$1.35 |
| \$22.00 pink damask Lambrequins at. | \$3.50 |
| \$7.50 and \$8.50 values in sample pairs Cretonne Curtains, at, pair. | \$3.75 |
| \$9.50 to \$12.50 values in special made Couch Covers—your choice at. | \$3.85 |
| \$12.00 vals. in applique ticking Portieres, special made, pr. | \$2.00 |
| \$18 vals. in heavy tapestry, special made Portieres, at, pr. | \$3.00 |
| \$17.50 vals. in heavy tapestry, special-made Portieres, pr. | \$5.00 |
| \$20 vals. in heavy tapestry, special-made Portieres, at, pr. | \$5.00 |
| \$26.00 vals. in heavy tapestry, special-made Portieres, pr. | \$5.00 |
| \$30.00 vals. in silk damask, applique Portieres, at, pair. | \$9.00 |

- IN THE BEDDING SECTION**
- | | |
|--|--------|
| \$1.25 cotton Mattress Pads, at, each. | 75c |
| \$2.75 full-size Summer Blankets, pair. | \$1.45 |
| \$3.25 heavy sateen-covered Comforters, ea. | \$1.55 |
| \$3.25 values in Pillows covered in fancy ticking, at, pair. | \$1.65 |
| \$3.75 values in Pillows covered in fancy ticking, at, pair. | \$1.85 |
| \$3.75 heavy Comforters, covered in sateen, at, each. | \$1.85 |
| \$3.00 pink and blue Spreads for children's cribs—at, each. | \$1.65 |
| \$2.35 full-size Summer Comforters, ea. | \$1.10 |

\$30 Body Brussels Rugs at \$23.75—the 9x12 ft. Size

A new lot of these room-size Rugs have just been received and are shown in the popular tan, brown and olive combinations, small conventional and Oriental designs. They are just the thing for the living-room, dining-room and library. Eight patterns to select from. These are offered for three days only at the above special, Monday, Tuesday and Wednesday in the Carpet Department, sixth floor.

Refrigerators—Low Priced and Right in Season

- | | |
|---|--|
| \$13.50 REFRIGERATOR AT \$9.75 | Galvanized iron lined. 50 lbs. ice capacity. |
| \$18.00 "SANITARY" REFRIGERATOR AT \$14.40 | Height 48 inches; galvanized iron lined; 40 lbs. ice capacity. |
| \$21.00 "SANITARY" REFRIGERATOR AT \$15.75 | Height 46-inches. White enamel-lined. 40 lbs. ice capacity. |
| \$27.00 "SANITARY" REFRIGERATOR AT \$21.50 | Height 54 1/2 inches. White enamel-lined. 85 lbs. ice capacity. |
| \$31.00 "SANITARY" REFRIGERATOR AT \$24.75 | Height: 58 1/2 inches. Galvanized iron-lined; 100 pounds ice capacity. |