

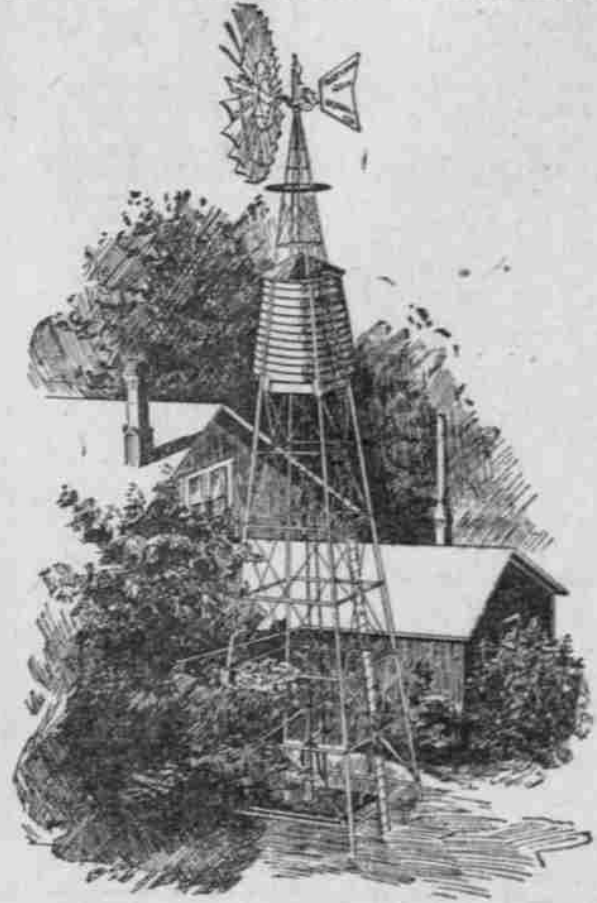
RUNNING WATER: ABSOLUTELY ESSENTIAL TO SUBURBAN COMFORT

NO SUBURBAN HOME CAN BE ENTIRELY COMFORTABLE WITHOUT AN ADEQUATE WATER SYSTEM. WE HAVE OUTFITS OF ALL KINDS AT REASONABLE PRICES

LEADER PNEUMATIC WATER TANKS THE "CONVENIENT" SYSTEM

Leader outfits furnish water cheaper than you can buy it in the city from a city water main. The tank can be placed in the basement or in the ground near the house, keeping the water cool in Summer and proof against freezing in Winter. Pipes can be laid to all parts of your property, giving you all the water you need at the point where it is most needed. Fire insurance companies realize the value of Leader Tanks as protection against fire and will reduce insurance rates when they receive notification that such an outfit has been installed. Any reasonable pressure may be maintained by means of a Leader Tank and the water can be used to good advantage for sprinkling as well as domestic purposes.

If you equip your tank with a hand pump, a few minutes of your time each evening will be sufficient to supply enough water for the following day's use. If you use a larger capacity pump and a gasoline engine, you can start your engine and go about your other business until your engine has pumped the water to the proper pressure. You may if you desire install an Electric Motor and an automatic controller, which starts the motor automatically when the pressure becomes low. We have all sizes of Leader Tanks and can sell you a system complete.



STAR WIND MILLS ALL THE WATER YOU WANT FOR ALL PURPOSES

We have installed many Star Wind Mills throughout the Northwest and the users have found them to be just what we claim they are—the best wind mills on the market. They are smooth-running, powerful mills and are strongly made. The frame and fans are galvanized after all shop-work has been completed, making them absolutely rust-proof. Furnished with removable bushings, which can be taken out and replaced in a short time and without disconnecting the mill. Equipped with an improved ball governor. Star Wind Mills have many other features. Let us tell you about them.

PHONE

PACIFIC
EAST 2177

HOME
B 2224

Mitchell
LEWIS & STAYER CO.

MYERS PUMPS

We recommend them for use in connection with our STAR or LEADER outfits

If you are not in position to install a Wind Mill or Leader system and wish to get a good pump, we want you to see and examine the Myers Line. We have a complete stock of pumps and can furnish you one which best fits your requirements. The Myers line is the most extensive line of pumps on the market. Are built in the largest pump factory in the world by men who know their business. Get our prices before buying.

Take off your Hat to the Myers!
BEST PUMP ON EARTH.



ALL IN FIRST MARCH

Opening Parade of Rose Festival to Be Representative.

LENGTH WILL BE 2 MILES

All Local Military, Fraternal and Civic Bodies Will Have Representation in Line and Illumination Will Be Fine.

The Rose Festival will be opened on Monday night, June 7, by a street pageant which will attempt to bring together the organized forces of all local military, fraternal and civic bodies in Portland. A meeting of the general committee was held yesterday afternoon, and reports from the several sub-committees indicated that a full representation of these various organizations would be in the line of march.

Briefly summed up, this introductory street procession will be about two miles in length. It will include the full turnout of the National Guardmen of the state, the Oregon Commandery of Spanish War Veterans, several of the G. A. R. Posts as the military portion of the pageant.

Fraternal societies have responded generously to the appeal to take part and help get the floral festival under way in a more substantial manner than in any former year.

General E. M. Lance, of the Knights of the Maccabees, was present and assured the participation of four companies to their division—Division No. 1, under Captain Anderson; Division No. 2, under Captain Shepard; from the Leagues of the Maccabees, two companies of 30 each were assured, all of uniform rank as follows: Laurewood Hives, in command of Mrs. Captain Marshall; Portland Hives, in command of Mrs. Captain Clara Knott. These uniform rank teams are in bang-up shape to turn out at present and will make a hard fight for the Elk trophy—the \$150 silver cup.

The East Side Business Men's Club will turn out a strong marching club in this parade, and the Peninsula Association is in line with from 200 to 300 "live wires."

The "Newcomers' Club" will have place in the parade, details of the arrangement having been left to General W. E. Finzer, grand marshal, and President Ralph W. Hoyt, of the Festival Association.

The National Guard of Oregon will be out in full force, as will the Spanish War Veterans. The Eagles have promised anywhere from 25 to 40 marchers in line. The Modern Woodmen of America are preparing six or seven teams of uniform rank for the procession in the command of Major G. H. F. Murray.

The mail carriers will have more than 100 men in line, with a band leading their division.

The Portland Hunt Club will appear in cavalcade with all men members of the organization and will occupy between three and four blocks in the parade.

The Portland Police Department has entered its band of 22 pieces and there will be in addition a mounted police patrol of about 20 members.

Butler Post, G. A. R., will have its white-haired veterans in the line, and the Woodmen of the World have offered four companies to take part.

The Portland Social Turn Verein has a

crack battalion of about 300 members who will lend a striking and picturesque atmosphere to the opening procession. A number of other fraternal societies have yet to decide on the part they are to take. Red fire, big sparklers, fire wagons and huge searchlights are to be used to add spectacular interest to the premier parade of the festival week. Negotiations for entrance of a number of other strong features were taken up at yesterday's meeting and they will be announced from day to day.

Arrested Before Law Is Effective.
M. G. McGrath, a hardware dealer on Washington street, was arrested yesterday afternoon for violating the new

ordinance in regard to the sale of weapons. Under the terms of the ordinance, in order for a dealer to sell such a weapon it is necessary for the purchaser to obtain permission from the Chief of Police to carry the weapon, as well as for a permit for the dealer to sell them. McGrath brought up the question of the force of the law, and whether it was in effect or not. Mayor Lane did not sign the ordinance until April 30, and the law does not become effective until 20 days thereafter. The charge was dropped.

Two Given Prison Sentence.
ROSEBURG, Or., May 22.—(Special.)—In the Circuit Court in this city today

George F. Meyers, who some weeks ago forged a check on the First National Bank in this city, was found guilty and sentenced to two years in the penitentiary. Jesse Lemere, convicted of robbing a rooming-house in this city some weeks ago, was sentenced to one year in the penitentiary.

Junket for Raymond Club.
RAYMOND, Wash., May 22.—(Special.)—The Raymond Commercial Club will give a business men's excursion to Clallam, Ilwaco, Nahcotta and other down-bay points early in June. The trip will be on quite an elaborate scale and will occupy about three days.

NEW RELIGIOUS EDIFICE IN MULTNOMAH ADDITION TO BE DEDICATED TODAY.



PILGRIM CONGREGATIONAL CHURCH, SHAVER STREET AND MISSOURI AVENUE, MULTNOMAH ADDITION.

The Pilgrim Congregational Church, recently completed at a cost of \$12,000, will be dedicated today at 2:30 P. M. The church is located at Shaver street and Missouri avenue, Multnomah Addition. The program is as follows: Organ prelude; doxology; invocation, Rev. Edward S. Bollinger; anthem, the choir; responsive reading, led by Rev. W. H. Meyer; music, "How We Now Stand," E. V. Ricks, chairman building committee; address, "The Conversion of Wealth and Talents Into Eternal Values," Rev. Luther B. Dyson, D. D., "Putting Principle Into Practice"; greetings; the act of dedication; prayer of dedication, Rev. D. B. Gray; dedication hymn; silent prayer; benediction, Rev. J. J. Stanb.

MANY PRIZES OFFERED

OVER 55 CUPS HUNG UP FOR ROSE EXPOSITION.

Entry Blanks Are Ready for Public and Conditions of Competition Are Announced.

Mrs. John W. Minto, president of the Portland Rose Society, has just received from the printers the entry blanks with trophy lists for the next rose exhibition, which will be held at the California building in connection with the Rose Festival. The exhibition, for which between 75 and 80 silver cups will be offered as awards, will be held on Tuesday and Wednesday, June 8 and 9.

Trophies will be awarded as first and second prizes in each of the following classes and sections, which are to be exhibited in boxes:

FOR AMATEURS

Class 1, Section A.

No. 1, best 4 roses, separate named varieties; No. 2, best 12 roses, separate named varieties; No. 3, best 24 roses, separate named varieties; No. 4, general exhibit in this section.

Class 2, Section B.

No. 1, best 12 Carolina Testout; No. 2, best 24 Carolina Testout; No. 3, best 36 Carolina Testout.

Class 3, Section C.

No. 1, best 4 red roses, any one variety named; No. 2, best 4 white roses, any one variety named; No. 3, best 4 pink roses, any one variety named.

Class 4, Section D.

No. 1, best 4 France (pink); No. 2, best 4 Ulrich Brunner; No. 3, best 4 Karl Rosenfeld; No. 4, best 4 Mamam Couder; (pink); No. 5, best 4 Mrs. John Lane.

Class 5, Section E.

No. 1, best hybrid perpetual named, any color; No. 2, best tea named, any color; No. 3, best tea named, any color; No. 4, best Marshall Neil, named, any color.

Class 6, Section F.

No. 1, best yellow hybrid tea named; No. 2, best three yellow hybrid tea named; No. 3, best yellow tea named; No. 4, best 4 yellow tea named.

Class 7, Section G.

No. 1, best collection 4 varieties, any color, 4 blooms each; No. 2, best collection 16 varieties, any color, 4 blooms each.

Class 8, Section H.

Best individual rose in the show, exhibited in any vase; best general exhibit (section A included); best exhibit of new roses (not exhibited before 1907); best arranged exhibit (section A included); open to growers; exhibitors may have a prize; 12 blooms, distinct varieties; 12 blooms, one variety, in single vase; 12 business garden roses.

Class 9, for Nurserymen.

Best general exhibit of roses and shrubbery, any price; 1st, \$100; 2nd, \$50; 3rd, \$25.

Conditions of Exhibition.

Roses entered in section A must be exhibited in boxes of repinning size. For 4 roses, 1 foot 2 inches high; for 12 roses, 1 foot 2 inches high; for 24 roses, 1 foot 2 inches high; for 36 roses, 1 foot 2 inches high; for 48 roses, 1 foot 2 inches high; for 60 roses, 1 foot 2 inches high; for 72 roses, 1 foot 2 inches high; for 84 roses, 1 foot 2 inches high; for 96 roses, 1 foot 2 inches high; for 108 roses, 1 foot 2 inches high; for 120 roses, 1 foot 2 inches high; for 132 roses, 1 foot 2 inches high; for 144 roses, 1 foot 2 inches high; for 156 roses, 1 foot 2 inches high; for 168 roses, 1 foot 2 inches high; for 180 roses, 1 foot 2 inches high; for 192 roses, 1 foot 2 inches high; for 204 roses, 1 foot 2 inches high; for 216 roses, 1 foot 2 inches high; for 228 roses, 1 foot 2 inches high; for 240 roses, 1 foot 2 inches high; for 252 roses, 1 foot 2 inches high; for 264 roses, 1 foot 2 inches high; for 276 roses, 1 foot 2 inches high; for 288 roses, 1 foot 2 inches high; for 300 roses, 1 foot 2 inches high; for 312 roses, 1 foot 2 inches high; for 324 roses, 1 foot 2 inches high; for 336 roses, 1 foot 2 inches high; for 348 roses, 1 foot 2 inches high; for 360 roses, 1 foot 2 inches high; for 372 roses, 1 foot 2 inches high; for 384 roses, 1 foot 2 inches high; for 396 roses, 1 foot 2 inches high; for 408 roses, 1 foot 2 inches high; for 420 roses, 1 foot 2 inches high; for 432 roses, 1 foot 2 inches high; for 444 roses, 1 foot 2 inches high; for 456 roses, 1 foot 2 inches high; for 468 roses, 1 foot 2 inches high; for 480 roses, 1 foot 2 inches high; for 492 roses, 1 foot 2 inches high; for 504 roses, 1 foot 2 inches high; for 516 roses, 1 foot 2 inches high; for 528 roses, 1 foot 2 inches high; for 540 roses, 1 foot 2 inches high; for 552 roses, 1 foot 2 inches high; for 564 roses, 1 foot 2 inches high; for 576 roses, 1 foot 2 inches high; for 588 roses, 1 foot 2 inches high; for 600 roses, 1 foot 2 inches high; for 612 roses, 1 foot 2 inches high; for 624 roses, 1 foot 2 inches high; for 636 roses, 1 foot 2 inches high; for 648 roses, 1 foot 2 inches high; for 660 roses, 1 foot 2 inches high; for 672 roses, 1 foot 2 inches high; for 684 roses, 1 foot 2 inches high; for 696 roses, 1 foot 2 inches high; for 708 roses, 1 foot 2 inches high; for 720 roses, 1 foot 2 inches high; for 732 roses, 1 foot 2 inches high; for 744 roses, 1 foot 2 inches high; for 756 roses, 1 foot 2 inches high; for 768 roses, 1 foot 2 inches high; for 780 roses, 1 foot 2 inches high; for 792 roses, 1 foot 2 inches high; for 804 roses, 1 foot 2 inches high; for 816 roses, 1 foot 2 inches high; for 828 roses, 1 foot 2 inches high; for 840 roses, 1 foot 2 inches high; for 852 roses, 1 foot 2 inches high; for 864 roses, 1 foot 2 inches high; for 876 roses, 1 foot 2 inches high; for 888 roses, 1 foot 2 inches high; for 900 roses, 1 foot 2 inches high; for 912 roses, 1 foot 2 inches high; for 924 roses, 1 foot 2 inches high; for 936 roses, 1 foot 2 inches high; for 948 roses, 1 foot 2 inches high; for 960 roses, 1 foot 2 inches high; for 972 roses, 1 foot 2 inches high; for 984 roses, 1 foot 2 inches high; for 996 roses, 1 foot 2 inches high; for 1008 roses, 1 foot 2 inches high; for 1020 roses, 1 foot 2 inches high; for 1032 roses, 1 foot 2 inches high; for 1044 roses, 1 foot 2 inches high; for 1056 roses, 1 foot 2 inches high; for 1068 roses, 1 foot 2 inches high; for 1080 roses, 1 foot 2 inches high; for 1092 roses, 1 foot 2 inches high; for 1104 roses, 1 foot 2 inches high; for 1116 roses, 1 foot 2 inches high; for 1128 roses, 1 foot 2 inches high; for 1140 roses, 1 foot 2 inches high; for 1152 roses, 1 foot 2 inches high; for 1164 roses, 1 foot 2 inches high; for 1176 roses, 1 foot 2 inches high; for 1188 roses, 1 foot 2 inches high; for 1200 roses, 1 foot 2 inches high; for 1212 roses, 1 foot 2 inches high; for 1224 roses, 1 foot 2 inches high; for 1236 roses, 1 foot 2 inches high; for 1248 roses, 1 foot 2 inches high; for 1260 roses, 1 foot 2 inches high; for 1272 roses, 1 foot 2 inches high; for 1284 roses, 1 foot 2 inches high; for 1296 roses, 1 foot 2 inches high; for 1308 roses, 1 foot 2 inches high; for 1320 roses, 1 foot 2 inches high; for 1332 roses, 1 foot 2 inches high; for 1344 roses, 1 foot 2 inches high; for 1356 roses, 1 foot 2 inches high; for 1368 roses, 1 foot 2 inches high; for 1380 roses, 1 foot 2 inches high; for 1392 roses, 1 foot 2 inches high; for 1404 roses, 1 foot 2 inches high; for 1416 roses, 1 foot 2 inches high; for 1428 roses, 1 foot 2 inches high; for 1440 roses, 1 foot 2 inches high; for 1452 roses, 1 foot 2 inches high; for 1464 roses, 1 foot 2 inches high; for 1476 roses, 1 foot 2 inches high; for 1488 roses, 1 foot 2 inches high; for 1500 roses, 1 foot 2 inches high; for 1512 roses, 1 foot 2 inches high; for 1524 roses, 1 foot 2 inches high; for 1536 roses, 1 foot 2 inches high; for 1548 roses, 1 foot 2 inches high; for 1560 roses, 1 foot 2 inches high; for 1572 roses, 1 foot 2 inches high; for 1584 roses, 1 foot 2 inches high; for 1596 roses, 1 foot 2 inches high; for 1608 roses, 1 foot 2 inches high; for 1620 roses, 1 foot 2 inches high; for 1632 roses, 1 foot 2 inches high; for 1644 roses, 1 foot 2 inches high; for 1656 roses, 1 foot 2 inches high; for 1668 roses, 1 foot 2 inches high; for 1680 roses, 1 foot 2 inches high; for 1692 roses, 1 foot 2 inches high; for 1704 roses, 1 foot 2 inches high; for 1716 roses, 1 foot 2 inches high; for 1728 roses, 1 foot 2 inches high; for 1740 roses, 1 foot 2 inches high; for 1752 roses, 1 foot 2 inches high; for 1764 roses, 1 foot 2 inches high; for 1776 roses, 1 foot 2 inches high; for 1788 roses, 1 foot 2 inches high; for 1800 roses, 1 foot 2 inches high; for 1812 roses, 1 foot 2 inches high; for 1824 roses, 1 foot 2 inches high; for 1836 roses, 1 foot 2 inches high; for 1848 roses, 1 foot 2 inches high; for 1860 roses, 1 foot 2 inches high; for 1872 roses, 1 foot 2 inches high; for 1884 roses, 1 foot 2 inches high; for 1896 roses, 1 foot 2 inches high; for 1908 roses, 1 foot 2 inches high; for 1920 roses, 1 foot 2 inches high; for 1932 roses, 1 foot 2 inches high; for 1944 roses, 1 foot 2 inches high; for 1956 roses, 1 foot 2 inches high; for 1968 roses, 1 foot 2 inches high; for 1980 roses, 1 foot 2 inches high; for 1992 roses, 1 foot 2 inches high; for 2004 roses, 1 foot 2 inches high; for 2016 roses, 1 foot 2 inches high; for 2028 roses, 1 foot 2 inches high; for 2040 roses, 1 foot 2 inches high; for 2052 roses, 1 foot 2 inches high; for 2064 roses, 1 foot 2 inches high; for 2076 roses, 1 foot 2 inches high; for 2088 roses, 1 foot 2 inches high; for 2100 roses, 1 foot 2 inches high; for 2112 roses, 1 foot 2 inches high; for 2124 roses, 1 foot 2 inches high; for 2136 roses, 1 foot 2 inches high; for 2148 roses, 1 foot 2 inches high; for 2160 roses, 1 foot 2 inches high; for 2172 roses, 1 foot 2 inches high; for 2184 roses, 1 foot 2 inches high; for 2196 roses, 1 foot 2 inches high; for 2208 roses, 1 foot 2 inches high; for 2220 roses, 1 foot 2 inches high; for 2232 roses, 1 foot 2 inches high; for 2244 roses, 1 foot 2 inches high; for 2256 roses, 1 foot 2 inches high; for 2268 roses, 1 foot 2 inches high; for 2280 roses, 1 foot 2 inches high; for 2292 roses, 1 foot 2 inches high; for 2304 roses, 1 foot 2 inches high; for 2316 roses, 1 foot 2 inches high; for 2328 roses, 1 foot 2 inches high; for 2340 roses, 1 foot 2 inches high; for 2352 roses, 1 foot 2 inches high; for 2364 roses, 1 foot 2 inches high; for 2376 roses, 1 foot 2 inches high; for 2388 roses, 1 foot 2 inches high; for 2400 roses, 1 foot 2 inches high; for 2412 roses, 1 foot 2 inches high; for 2424 roses, 1 foot 2 inches high; for 2436 roses, 1 foot 2 inches high; for 2448 roses, 1 foot 2 inches high; for 2460 roses, 1 foot 2 inches high; for 2472 roses, 1 foot 2 inches high; for 2484 roses, 1 foot 2 inches high; for 2496 roses, 1 foot 2 inches high; for 2508 roses, 1 foot 2 inches high; for 2520 roses, 1 foot 2 inches high; for 2532 roses, 1 foot 2 inches high; for 2544 roses, 1 foot 2 inches high; for 2556 roses, 1 foot 2 inches high; for 2568 roses, 1 foot 2 inches high; for 2580 roses, 1 foot 2 inches high; for 2592 roses, 1 foot 2 inches high; for 2604 roses, 1 foot 2 inches high; for 2616 roses, 1 foot 2 inches high; for 2628 roses, 1 foot 2 inches high; for 2640 roses, 1 foot 2 inches high; for 2652 roses, 1 foot 2 inches high; for 2664 roses, 1 foot 2 inches high; for 2676 roses, 1 foot 2 inches high; for 2688 roses, 1 foot 2 inches high; for 2700 roses, 1 foot 2 inches high; for 2712 roses, 1 foot 2 inches high; for 2724 roses, 1 foot 2 inches high; for 2736 roses, 1 foot 2 inches high; for 2748 roses, 1 foot 2 inches high; for 2760 roses, 1 foot 2 inches high; for 2772 roses, 1 foot 2 inches high; for 2784 roses, 1 foot 2 inches high; for 2796 roses, 1 foot 2 inches high; for 2808 roses, 1 foot 2 inches high; for 2820 roses, 1 foot 2 inches high; for 2832 roses, 1 foot 2 inches high; for 2844 roses, 1 foot 2 inches high; for 2856 roses, 1 foot 2 inches high; for 2868 roses, 1 foot 2 inches high; for 2880 roses, 1 foot 2 inches high; for 2892 roses, 1 foot 2 inches high; for 2904 roses, 1 foot 2 inches high; for 2916 roses, 1 foot 2 inches high; for 2928 roses, 1 foot 2 inches high; for 2940 roses, 1 foot 2 inches high; for 2952 roses, 1 foot 2 inches high; for 2964 roses, 1 foot 2 inches high; for 2976 roses, 1 foot 2 inches high; for 2988 roses, 1 foot 2 inches high; for 3000 roses, 1 foot 2 inches high; for 3012 roses, 1 foot 2 inches high; for 3024 roses, 1 foot 2 inches high; for 3036 roses, 1 foot 2 inches high; for 3048 roses, 1 foot 2 inches high; for 3060 roses, 1 foot 2 inches high; for 3072 roses, 1 foot 2 inches high; for 3084 roses, 1 foot 2 inches high; for 3096 roses, 1 foot 2 inches high; for 3108 roses, 1 foot 2 inches high; for 3120 roses, 1 foot 2 inches high; for 3132 roses, 1 foot 2 inches high; for 3144 roses, 1 foot 2 inches high; for 3156 roses, 1 foot 2 inches high; for 3168 roses, 1 foot 2 inches high; for 3180 roses, 1 foot 2 inches high; for 3192 roses, 1 foot 2 inches high; for 3204 roses, 1 foot 2 inches high; for 3216 roses, 1 foot 2 inches high; for 3228 roses, 1 foot 2 inches high; for 3240 roses, 1 foot 2 inches high; for 3252 roses, 1 foot 2 inches high; for 3264 roses, 1 foot 2 inches high; for 3276 roses, 1 foot 2 inches high; for 3288 roses, 1 foot 2 inches high; for 3300 roses, 1 foot 2 inches high; for 3312 roses, 1 foot 2 inches high; for 3324 roses, 1 foot 2 inches high; for 3336 roses, 1 foot 2 inches high; for 3348 roses, 1 foot 2 inches high; for 3360 roses, 1 foot 2 inches high; for 3372 roses, 1 foot 2 inches high; for 3384 roses, 1 foot 2 inches high; for 3396 roses, 1 foot 2 inches high; for 3408 roses, 1 foot 2 inches high; for 3420 roses, 1 foot 2 inches high; for 3432 roses, 1 foot 2 inches high; for 3444 roses, 1 foot 2 inches high; for 3456 roses, 1 foot 2 inches high; for 3468 roses, 1 foot 2 inches high; for 3480 roses, 1 foot 2 inches high; for 3492 roses, 1 foot 2 inches high; for 3504 roses, 1 foot 2 inches high; for 3516 roses, 1 foot 2 inches high; for 3528 roses, 1 foot 2 inches high; for 3540 roses, 1 foot 2 inches high; for 3552 roses, 1 foot 2 inches high; for 3564 roses, 1 foot 2 inches high; for 3576 roses, 1 foot 2 inches high; for 3588 roses, 1 foot 2 inches high; for 3600 roses, 1 foot 2 inches high; for 3612 roses, 1 foot 2 inches high; for 3624 roses, 1 foot 2 inches high; for 3636 roses, 1 foot 2 inches high; for 3648 roses, 1 foot 2 inches high; for 3660 roses, 1 foot 2 inches high; for 3672 roses, 1 foot 2 inches high; for 3684 roses, 1 foot 2 inches high; for 3696 roses, 1 foot 2 inches high; for 3708 roses, 1 foot 2 inches high; for 3720 roses, 1 foot 2 inches high; for 3732 roses, 1 foot 2 inches high; for 3744 roses, 1 foot 2 inches high; for 3756 roses, 1 foot 2 inches high; for 3768 roses, 1 foot 2 inches high; for 3780 roses, 1 foot 2 inches high; for 3792 roses, 1 foot 2 inches high; for 3804 roses, 1 foot 2 inches high; for 3816 roses, 1 foot 2 inches high; for 3828 roses, 1 foot 2 inches high; for 3840 roses, 1 foot 2 inches high; for 3852 roses, 1 foot 2 inches high; for 3864 roses, 1 foot 2 inches high; for 3876 roses, 1 foot 2 inches high; for 3888 roses, 1 foot 2 inches high; for 3900 roses, 1 foot 2 inches high; for 3912 roses, 1 foot 2 inches high; for 3924 roses, 1 foot 2 inches high; for 3936 roses, 1 foot 2 inches high; for 3948 roses, 1 foot 2 inches high; for 3960 roses, 1 foot 2 inches high; for 3972 roses, 1 foot 2 inches high; for 3984 roses, 1 foot 2 inches high; for 3996 roses, 1 foot 2 inches high; for 4008 roses, 1 foot 2 inches high; for 4020 roses, 1 foot 2 inches high; for 4032 roses, 1 foot 2 inches high; for 4044 roses, 1 foot 2 inches high; for 4056 roses, 1 foot 2 inches high; for 4068 roses, 1 foot 2 inches high; for 4080 roses, 1 foot 2 inches high; for 4092 roses, 1 foot 2 inches high; for 4104 roses, 1 foot 2 inches high; for 4116 roses, 1 foot 2 inches high; for 4128 roses, 1 foot 2 inches high; for 4140 roses, 1 foot 2 inches high; for 4152 roses, 1 foot 2 inches high; for 4164 roses, 1 foot 2 inches high; for 4176 roses, 1 foot 2 inches high; for 4188 roses, 1 foot 2 inches high; for 4200 roses, 1 foot 2 inches high; for 4212 roses, 1 foot 2 inches high; for 4224 roses, 1 foot 2 inches high; for 4236 roses, 1 foot 2 inches high; for 4248 roses, 1 foot 2 inches high; for 4260 roses, 1 foot 2 inches high; for 4272 roses, 1 foot 2 inches high; for 4284 roses, 1 foot 2 inches high; for 4296 roses, 1 foot 2 inches high; for 4308 roses, 1 foot 2 inches high; for 4320 roses, 1 foot 2 inches high; for 4332 roses, 1 foot 2 inches high; for 4344 roses, 1 foot 2 inches high; for 4356 roses, 1 foot 2 inches high; for 4368 roses, 1 foot 2 inches high; for 4380 roses, 1 foot 2 inches high; for 4392 roses, 1 foot 2 inches high; for 4404 roses, 1 foot 2 inches high; for 4416 roses, 1 foot 2 inches high; for 4428 roses, 1 foot 2 inches high; for 4440 roses, 1 foot 2 inches high; for 4452 roses, 1 foot 2 inches high; for 4464 roses, 1 foot 2 inches high; for 4476 roses, 1 foot 2 inches high; for 4488 roses, 1 foot 2 inches high; for 4500 roses, 1 foot 2 inches high; for 4512 roses, 1 foot 2 inches high; for 4524 roses, 1 foot 2 inches high; for 4536 roses, 1 foot 2 inches high; for 4548 roses, 1 foot 2 inches high; for 4560 roses, 1 foot 2 inches high; for 4572 roses, 1 foot 2 inches high; for 4584 roses, 1 foot 2 inches high; for 4596 roses, 1 foot 2 inches high; for 4608 roses, 1 foot 2 inches high; for 4620 roses, 1 foot 2 inches high; for 4632 roses, 1 foot 2 inches high; for 4644 roses, 1 foot 2 inches high; for 4656 roses, 1 foot 2 inches high; for 4668 roses, 1 foot 2 inches high; for 4680 roses, 1 foot 2 inches high; for 4692 roses, 1 foot 2 inches high; for 4704 roses, 1 foot 2 inches high; for 4716 roses, 1 foot 2 inches high; for 4728 roses, 1 foot 2 inches high; for 4740 roses, 1 foot 2 inches high; for 4752 roses, 1 foot 2 inches high; for 4764 roses, 1 foot 2 inches high; for 4776 roses, 1 foot 2 inches high; for 4788 roses, 1 foot 2 inches high; for 4800 roses, 1 foot 2 inches high; for 4812 roses, 1 foot 2 inches high; for 4824 roses, 1 foot 2 inches high; for 4836 roses, 1 foot 2 inches high; for 4848 roses, 1 foot 2 inches high; for 4860 roses, 1 foot 2 inches high; for 4872 roses, 1 foot 2 inches high; for 4884 roses, 1 foot 2 inches high; for 4896 roses, 1 foot 2 inches high; for 4908 roses, 1 foot 2 inches high; for 4920 roses, 1 foot 2 inches high; for 4932 roses, 1 foot 2 inches high; for 4944 roses, 1 foot 2 inches high; for 4956 roses, 1 foot 2 inches high; for 4968 roses, 1 foot 2 inches high; for 4980 roses, 1 foot 2 inches high; for 4992 roses, 1 foot 2 inches high; for 5004 roses, 1 foot 2 inches high; for 5016 roses, 1 foot 2 inches high; for 5028 roses, 1 foot 2 inches high; for 5040 roses, 1 foot 2 inches high; for 5052 roses, 1 foot 2 inches high; for 5064 roses, 1 foot 2 inches high; for 5076 roses, 1 foot 2 inches high; for 5088 roses, 1 foot 2 inches high; for 5100 roses, 1 foot 2 inches high; for 5112 roses, 1 foot 2 inches high; for 5124 roses, 1 foot 2 inches high; for 5136 roses, 1 foot 2 inches high; for 5148 roses, 1 foot 2 inches high; for 5160 roses, 1 foot 2 inches high; for 5172 roses, 1 foot 2 inches high; for 5184 roses, 1 foot 2 inches high; for 5196 roses, 1 foot 2 inches high; for 5208 roses, 1 foot 2 inches high; for 5220 roses, 1 foot 2 inches high; for 5232 roses, 1 foot 2 inches high; for 5244 roses, 1 foot 2 inches high; for 5256 roses, 1 foot 2 inches high; for 5268 roses, 1 foot 2 inches high; for 5280 roses, 1 foot 2 inches high; for 5292 roses, 1 foot 2 inches high; for 5304 roses, 1 foot 2 inches high; for 5316 roses, 1 foot 2 inches high; for 5328 roses, 1 foot 2 inches high; for 5340 roses, 1 foot 2 inches high; for 5352 roses, 1 foot 2 inches high; for 5364 roses, 1 foot 2 inches high; for 5376 roses, 1 foot 2 inches high; for 5388 roses, 1 foot 2 inches