

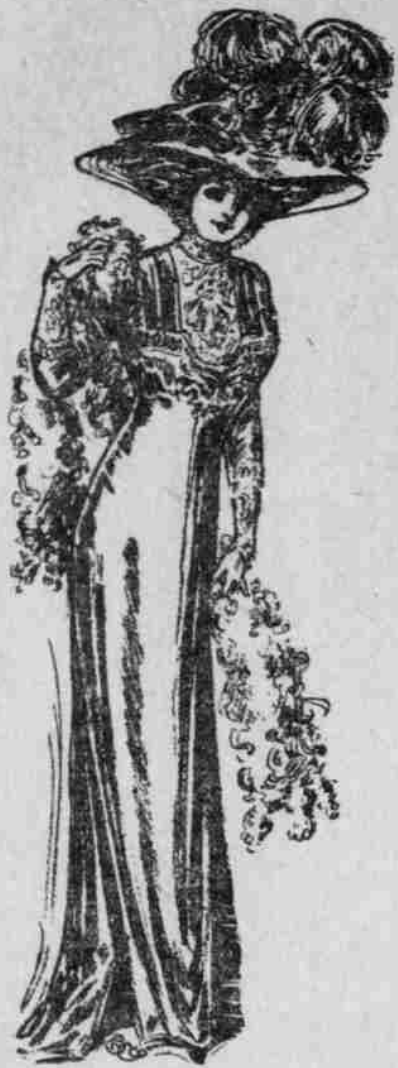
COMPLETE HOUSEFURNISHERS
AND INTERIOR DECORATORS

TULL & GIBBS

INCORPORATED

WOMEN'S, MISSES' AND
CHILDREN'S WEARING APPAREL

THIS WEEK--SEE OUR ATTRACTIVE WINDOW DISPLAYS OF EASTER WEARING APPAREL FOR WOMEN



Exclusive Easter Showing of Prevailing Styles in Gowns Dresses and Tailored Suits

A comprehensive array of exquisite styles and perfect-fitting garments—a complete new line in which fashion features are evident. Daily by express we have been receiving new garments in extensive variety of styles and fabrics the very newest—the most distinctive creations. The Cloak and Suit Section invites your inspection of this exclusive Easter display. Main Floor.

Exquisite new styles in Three-piece Suits, Lingerie Dresses, Silk Dresses, the new Tailored Salome Silk Suits, and the strictly man-tailored styles. Shown in variety of favored styles, are the Three-piece Pique and Linen Suits.

New Easter Blouses—the latest creations from Paris, also new models in the hand-embroidered waist styles.

In the Suits for Little Women—another new style assortment in the most fashionable cloths and also the new Salome Silks.

For the Little Misses—White Dresses appropriate for confirmation—made of India linen, Persian lawn and fine batiste, beautifully trimmed with fine laces or embroideries.

Several Patterns in Dressers and Chiffoniers Will Be Specially Priced in a Three Days' Sale

They are sample pieces selected from our line of Dressers and Chiffoniers in the golden oak—in the polished and dull finishes. The range of prices and variety of designs, and the attractive prices at which they are offered during three days' sale—Monday, Tuesday and Wednesday—affords an unusual opportunity for selecting a desirable bedroom piece.

\$17.00 Dresser in polished golden oak—reduced to	\$13.75
\$18.00 Dresser in polished golden oak—reduced to	\$14.50
\$26.50 Dresser in polished quarter-sawed golden oak—reduced to	\$17.75
\$37.00 Dresser in dull finished quarter-sawed golden oak—reduced to	\$24.75
\$33.00 Chiffonier to match—reduced to	\$21.75
\$41.00 Dresser in dull finished quarter-sawed golden oak—reduced to	\$28.50
\$36.00 Chiffonier to match—reduced to	\$23.75
\$49.50 Dresser in dull finished quarter-sawed golden oak—reduced to	\$34.50
\$38.00 Chiffonier to match—reduced to	\$24.50
\$60.00 Dresser in polished quarter-sawed golden oak—reduced to	\$39.50



Mail Orders Will Receive Our Prompt Attention

Quaint Furniture--New Designs in Dining Room and Living Room Pieces in Fumed Oak

The success and popularity of the quaint furniture in arts and crafts can be attributed to its distinctive features in design and construction—simplicity, refinement, comfort and durability.

The taste of the artistic 20th century American tends stronger than ever towards this style of furniture. For those rooms where the "quaint" styles are especially adapted—the living-room, library, the den and the dining-room, our showing embraces the best craftsman productions—shown entirely in the fumed oak. Among the many new pieces recently placed on our floors is the new "Luxury" chair with self-reclining back—a most comfortable and attractive piece. In dining-room furniture are the new designs in buffets—the large and massive and the smaller pieces—with trimmings in old brass and copper. Also a number of new "quaint" styles in dining tables.

Modern Schemes in Interior Decoration Correctly Executed

Our Decorative Department, with its most complete stock of materials for every purpose in home decoration, and employing only the most competent workmen for decorative work in its various branches—drapery, wall paper, tinting, graining and wood finishing—is enabled to suggest and execute the most artistic and correct treatments for all rooms. Estimates furnished on request.

WALL DECORATIONS—New arrivals in imported papers for the home. Dainty chintz and cretonne effects for the sleeping-room.

English Eltonbury Papers—will not fade—shown in sixteen colors.

Silk damask reproductions in German and Austrian Tekko papers.

Japanese hand-made leather papers, grass cloth and verdure tapestry effects for library and living-room.

Hand-decorated block-printed borders and friezes in all widths, from nine inches to forty-eight inches.

WINDOW HANGINGS—Lace Curtains made to order—to conform to the proportions of windows and to the decorative schemes of the rooms for which they are intended. We carry in stock both plain and fancy nets in various tints with edgings and insertions to match.

A List of Specials in Utensils in the Gray Granite and Blue-Enameled Ware

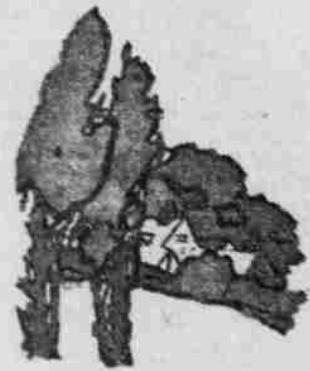
Housekeepers will recognize the opportunity for replenishing their stock of kitchen and household utensils from the following list which the Basement Department offers at special prices for two days—Monday and Tuesday.

8-inch Pie Pans, 10c values, each	5c
Skimmers, 10c values, each	5c
9-inch Cake Pans, 15c values, each	10c
No. 1 Pudding Pans, 15c values, each	10c
12-inch Basting Spoons, 15c values, each	10c
14-inch Basting Spoons, 20c values, each	15c
No. 3 Pudding Pans, 20c values, each	15c
No. 1 Bread Pans, 15c values, each	10c
No. 2 Bread Pans, 20c values, each	15c
No. 3 Bread Pans, 25c values, each	20c
Wash Basins, 30c values, each	15c
Lipped Sauce Pans, 30c values, each	20c
Lipped Sauce Pans, 35c values, each	25c
Preserve Kettles, 40c values, each	30c
Preserve Kettles, 30c values, each	20c

In the Blue Enameled Ware

Dippers, 20c values, each	15c
Dippers, 30c values, each	20c
Preserve Kettles, 30c value, each	17c
Preserve Kettles, 45c values, each	20c
Preserve Kettles, 60c values, each	30c
1½-quart Milk Pans, 20c values, each	15c
3-quart Milk Pans, 30c value, each	20c
4-quart Milk Pans, 40c values, each	25c
Berlin Kettles, 45c values, each	30c
Wash Basins, 35c values, each	20c

New Hand-Craft Rugs



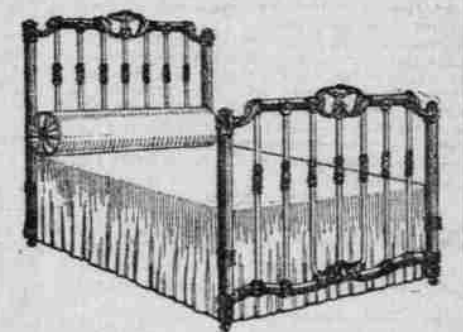
rugs. The Carpet Dept.—sixth floor.

The evolution of the rag carpet is shown in this display of handcraft rugs. They differ from those usually called rag carpets or rugs in that they are made of new materials specially prepared, and are triumphs of the art of hand-weave. The range of colors rivals the finest Wiltons and the designs lend themselves to the artistically decorated bedroom, the Summer cottage, the bungalow and the mountain lodge. See the splendid assortment of size shown in these quaint artistic

Ten Sample Patterns in Iron Beds Specially Priced

All full size and in several attractive finishes—cream and gold combinations—dark green and moss green bronze finishes—a number of designs having brass ornaments in the satin or polished finish. Sale Monday and Tuesday. Orders and inquiries by mail will be given our prompt and careful attention.

\$10.00 Bed in moss green finish, reduced to	\$6.75	\$14.00 Bed in moss green finish, reduced to	\$8.25
\$11.00 Bed in moss green finish, reduced to	\$6.75	\$14.00 Bed in cream and gold, reduced to	\$8.50
\$11.75 Bed in moss green finish, reduced to	\$6.85	\$14.00 Bed in moss green finish, reduced to	\$8.85
\$14.00 Bed in green bronze finish, reduced to	\$6.95	\$14.00 Bed in cream and gold, reduced to	\$8.75
\$12.00 Bed in moss green finish, reduced to	\$7.50	\$24.50 Bed in green bronze, reduced to	\$12.50



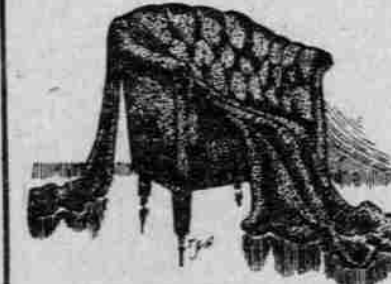
Artistic Fixtures for the Bathroom



The Basement Section has just received and is now showing a most complete line of fixtures for the bathroom—distinctive and unique in design—created by craftsmen—ware that is sanitary and will withstand constant usage. Everything for convenience in the bathroom is shown in this line—combination soap and tumbler holders—tumbler and toothbrush holders—soap and double tumbler holders—inverted tumbler and toothbrush holders—soup dishes—bath soap and sponge holders—comb and brush holders—crystal towel bars—paper holders—plate glass and opal shelves. The metal parts of these fixtures are of solid brass in the very highest nickel finish.

Children's Furniture

We show a most complete line of the many pieces that are essential for the safety and bringing-up of the little folks. Handsome styles in brass and enameled iron cribs—with the best drop-side devices. Baby jumpers and baby walkers—two exercising and care-taking pieces. The former is a combination rocker, jumper and can be adjusted to a sleeping position. The baby walker protects the child from injury and is a great aid in teaching it to walk. Our line of high chairs, nursery chairs, arm rockers and arm chairs is shown in most complete assortment.



Most Complete Stock of Fabrics For Furniture Covering

English wool fabrics, repp, silk damask and tapestry—plain and figured mohair, velvets and velours. In fact, we carry materials for every upholstery purpose and for all grades of furniture. The modern equipment of our upholstery workshops, together with skilled workmanship, enables us to do the most serviceable and satisfactory work at most moderate prices. Our representative will call and furnish estimates on the reupholstering, repairing and refinishing of your old furniture. Phone Exchange 34, or A 6007.