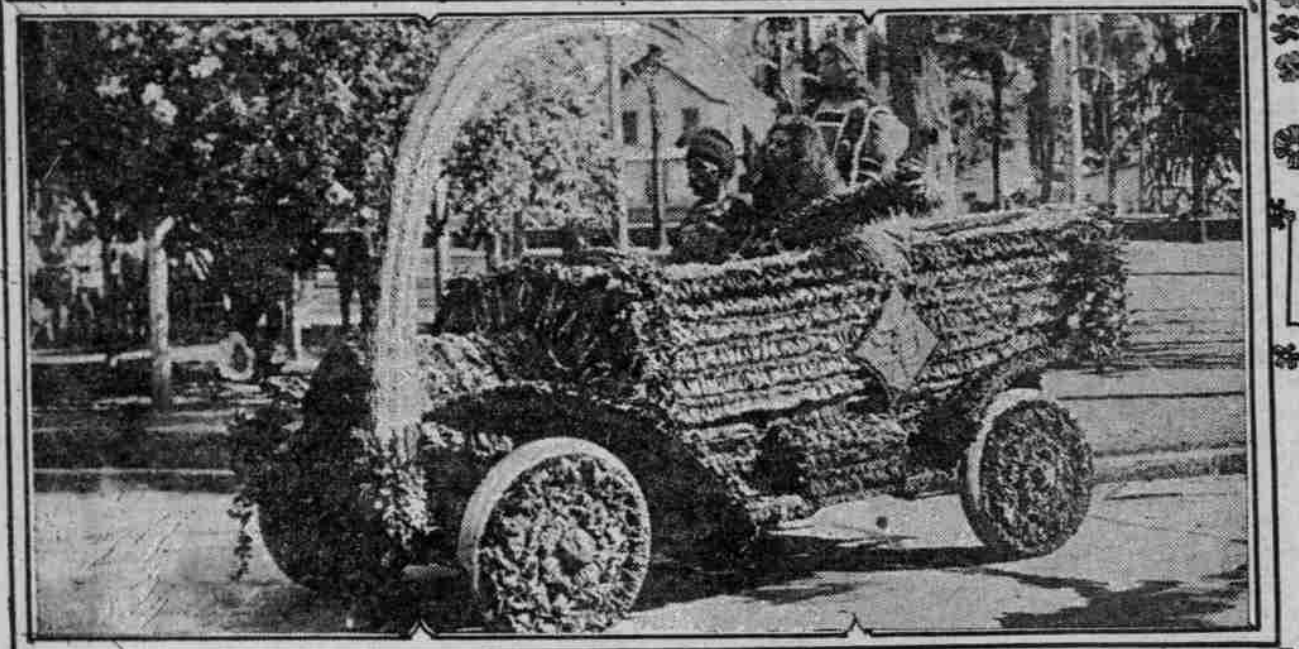


FLORAL PARADE OF HONOLULU IS MARKED BY MANY HANDSOME FLOATS



A GROUP OF HAWAIIAN PRINCESSES



PRINCESS OF MAUOA FLORAL FETE HONOLULU

HONOLULU, H. I., March 27.—(Special.)—The Floral Carnival in Honolulu is held on Washington's birthday now that Hawaii is a part of the United States. As was quite appropriate, there was a float this year which illustrated the cherry tree incident. And there was much else which emphasized the passing of the native. But there were features of the parade which were intended to keep alive the tradition of the race which formerly owned Hawaii. Most interesting of them was the delegation of princesses representing the different islands of the Hawaiian group, who appeared as pa-u riders clad in the pa-u, or divided skirt. This divided skirt for riding has always been used by women in Hawaii, and they set the fashion of riding astride long before it was adopted in America. The Island of Hawaii was represented by Miss Emma Rose, who wore a red pa-u with a black cape; Maui, by Miss Hanna Cummings in a red pa-u skirt with black trimmings; Molokai, by Mrs. Blackwell in a yellow pa-u skirt. But the center of interest was Miss Kapahu, of the Island of Kauai, who wore a skirt of green and a cape of white; over her shoulders she wore a pretty lei and on her head a chaplet. She was the popular favorite, though she was not a prize winner. The most interesting of the motor cars in line was the one on which was built the float, "The Princess of Maui." It illustrated the legend of the Princess of Maui, who was said to have been taken to the depths of the valley of the island each day on the rainbow which spans it. This float was entered by the Kawala Seminary, and in the working out of the design the rainbow was shown arched over the car, while beneath it sat Kaulomani and her attendants. The "Princess" part was taken by Hattie Keohohou, a beautiful Hawaiian girl; while her attendant was another Hawaiian, Sardinia Kaulomani. Frank Atherton, who drove the car, wore a feather cloak said to have belonged to the legendary princess. The carnival was a great success and was especially interesting to the "mail-bins," or visitors. The judges of the



HONOLULU FLORAL PARADE—A HAWAIIAN PRINCESS

floats were chosen from among these guests at the hotels and included men and women from Rochester, Vancouver, Chicago, San Francisco and other cities. In the evening there was a street carnival and masked ball.

Catholic Women's League Has New Rest and Lunch Rooms

Benevolent Society Provides Quiet, Homelike Retreat for Tired Working Girls—Classes in Various Arts Will Soon Be Organized.

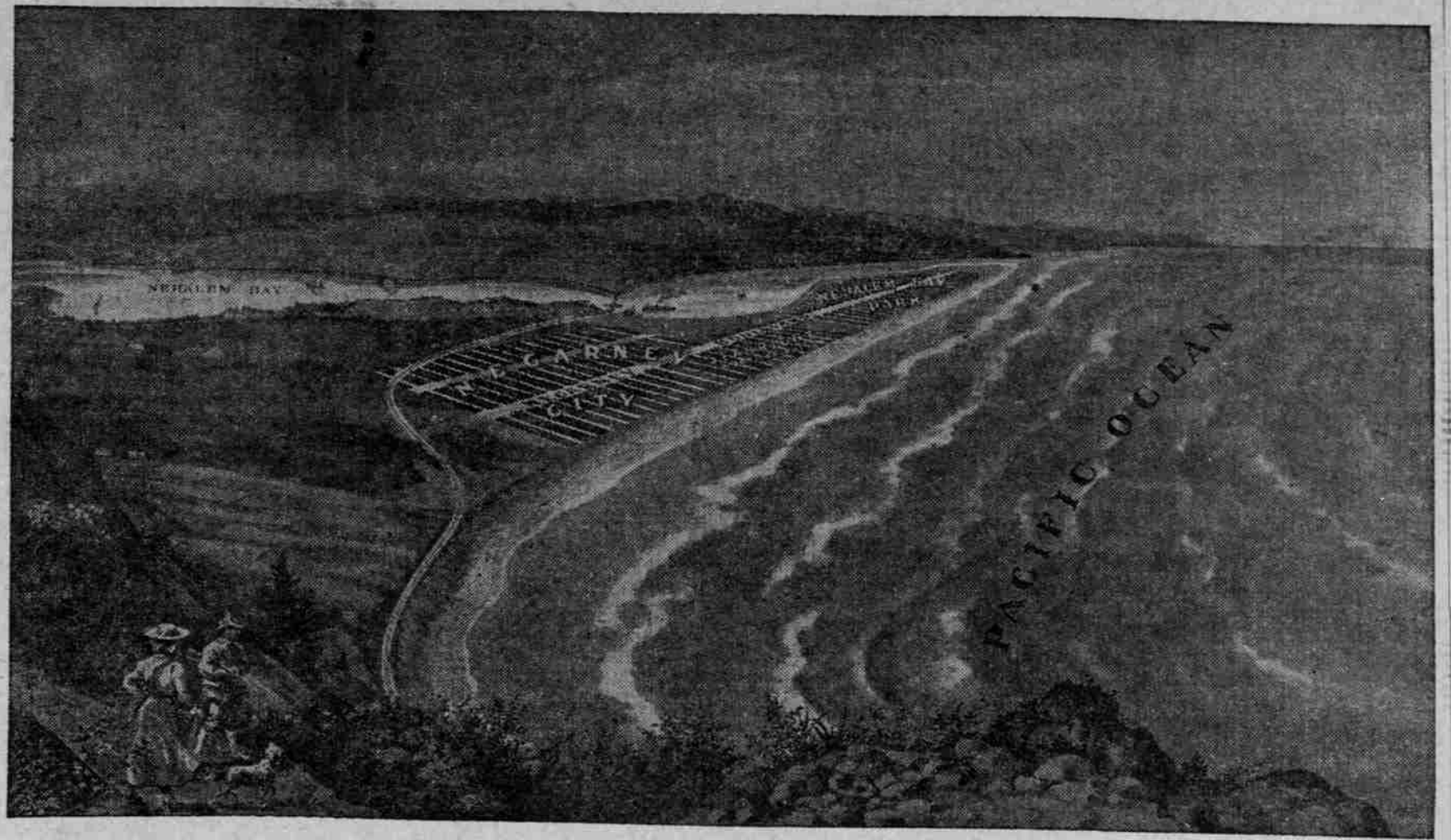
BY LILIAN TINGLE.
A CHORUS of approval and some expressions of wonder as to "why they haven't started to before"—that is what you will hear if you ask the opinion of the members and associate members of the newly-organized Catholic Women's League of Portland, in regard to their rest and lunch rooms

recently opened in the Columbia building. Here are quiet, homelike rooms, simply but tastefully furnished, with sunny, crisp-curtained windows, overlooking the "garden block," instead of the turmoil of Washington street. It is a place which takes into consideration that product of our hurrying civilization, "the very tired girl," and offers a chance for a noon hour rest and a re-

2 1/2 HOURS' RIDE THE P. R. & N. RAILROAD

Is Building to These Resorts As Fast As Possible

BUY BEFORE IT GETS THERE



There are many ocean beach resorts which, for lack of variety, become very monotonous; and, to make them attractive, artificial means must be resorted to, at an enormous expense, to produce attractions. This expense, of course, is charged to the property, and those who purchase Hence the difference in the price of lots in a Summer resort where artificial attractions must be made, and one which Nature has supplied with lasting and ever-interesting attractions.

Nature could hardly have been more generous with the Ocean and Bay Resorts of Necarney City, Seabright and Nehalem Bay Park. A lofty mountain at their back door, easy of ascent, covered with green verdure, restful to the eye and from whose lofty height a scene unsurpassed opens to view; and upon her slopes roam wild game—the hunter's delight. The beautiful ten-mile-long Nehalem Bay, upon whose waters is destined to take place many great aquatic sporting events, as well as the every-day pleasure of boating, yachting, sailing and trolling. Fish, large and small; speckled mountain trout. Ducks and geese in countless numbers float upon its placid bosom, awaiting your pleasure. And it is said hidden treasure is somewhere along its shores; and the so-called Nehalem beeswax and teakwood, said to come from wreckage of Spanish vessels, go to bear out this story. Listen: You could not find a more interesting location to spend your vacations than either Necarney City, Seabright or Nehalem Bay Park. We predict that not a lot in either of these resorts but that will bring a thousand dollars each within five years. Present prices up to and until April 15 are: Necarney City, \$125 per lot; \$10 down, \$5 per month. Seabright, \$125, \$150, \$175 and \$200; \$15 down, \$7.50 per month. Nehalem Bay Park, \$75, \$100 and \$125; \$10 down, \$5 per month.

Always keep this in mind: These resorts are and always will be the closest ocean and bay beach resorts to Portland. Do you realize the value of this? Men are at work on our Necarney City property, clearing streets and otherwise improving the same. A water company is now forming to bring pure spring water to each of our tracts.

Write, or call at our office for illustrated folder, fully describing these properties, some of which have already been sold by first purchasers for 125 per cent advance. For full information, maps, plats, etc., call on the

Nehalem Bay Land Co.

250 Oak Street, Corner of Fourth, Portland, Oregon.

Cut out and send or bring us this coupon, it is worth \$10.
Coupon No.
\$1000 GIVEN AWAY.
The first 100 coupons worth \$10 each, presented and accepted. Send or bring this coupon to our office for counterclaiming.
NEHALEM BAY LAND CO.
250 Oak Street, Portland, Oregon.

freshing cup of tea or coffee to go with her home lunch. But it also makes provision for the girl who is not tired and who enjoys her lunch all the better for the complete change of scene and the pleasant social chat across the tea-cups.

But this is only one side of the room's utility. Beginning about the first of April they will be utilized for evening classes in various practical subjects. Mondays there will be a class in sewing and dressmaking, conducted by Miss Casey, teacher of sewing in the public schools of the city.

Tuesday is the day for the class in millinery—always a popular study at this season of the year, under Mrs. W. A. Fields. In connection with this class an interesting feature will be a series of lectures by Ora Scaney, of New York, a recognized "expert" in the millinery world, and author of several books on this subject. There will be a class in physical culture on Thursday evenings, in charge of Miss Margaret Bolin, who

has conducted similar work in Seattle. All these classes meet at 7:30 P. M. On Saturday mornings there is a junior sewing class, which meets at 10, and is sure to prove popular.

The literary department is already in operation. Besides classes in art and literature, this department will provide a circulating library and a series of lectures on various interesting topics. On the social side it seems certain that the new rooms will be the scene of many "good times" for all members of the league. One feature is a regular social hour every Sunday afternoon to which all the young women of the various Catholic parishes in the city are cordially in-

ited. There will be a series of talks on practical subjects by Miss Emma Butler. The Portland League is somewhat similar in its purpose and activities to the Catholic Woman's League of England—one of the many vigorous societies established since the dawn of the 20th century as outlets for the zeal of Catholic women. It aims to co-operate with all organizations of similar purpose in a nonsectarian way. This applies particularly to the Information and Travelers' Aid department which will furnish information and advice to strangers and young women away from home or in search of employment. The officers of the league are: Mrs.

James Laidlaw, president; Mrs. John Manning, Mrs. Frank O'Neil, Mrs. T. J. McNamee, vice-presidents; Miss Emma Campion, secretary; Miss A. Cremen, treasurer. Chairmen of committees are: Mrs. John Maginnis, Mrs. F. P. Harter, Miss Emma Butler, Mrs. E. R. Brown, Mrs. W. E. Prudhomme, Mrs. J. D. Sullivan. Miss M. Flaherty is superintendent and is to be found at the league rooms every day between 9 and 5 o'clock.

Use Wizard Carpet Cleaner. All dealers. English pumps at Rosenthal's.

PRICES ADVANCE APRIL 1 Metzger Acre Tracts

which we have been selling for considerable less than their value, will be advanced in price April 1.

ONLY A FEW DAYS REMAIN

in which to purchase one or more of these beautiful home sites at the extremely low prices that we have been selling them during the past year.

Only a 29-Minute Ride From Center of City

and capable of producing the most bountiful crop of fruit, vegetables, berries or walnuts. Don't miss this opportunity. You will never get another equally as good. Take the Salem Electric Line, Front and Jefferson streets, and enjoy a delightful ride.

\$200 PER ACRE AND UP

TERMS—10 per cent cash and 3 per cent of the purchase price per month. INTEREST—6 per cent per annum on deferred payments. ON CASH PAYMENTS a discount will be allowed. On the Salem Electric line. Get off at Metzger Station and our agents will take pleasure in showing you around.

For particulars and descriptive plat, call at our Portland office, 226-228 Front street, or at Metzger Station. All cars stop at Metzger's.

Herman Metzger, Owner

Office Phones, Main 474, A 1374. Phone at Station, M 6409.



CROWD THAT GREETED THE FARMING DEMONSTRATION TRAIN AT ASHLAND.

Interest aroused by the farming demonstration train, run by the Southern Pacific through Southern Oregon, is shown in convincing fashion by this photograph, taken of a section of the crowd that visited the train at Ashland, its first stop, last Monday morning. The train showed the farmers improved methods of fruit and poultry raising, and the lectures and demonstrations were largely attended and carefully noted. Better and more fruit and poultry throughout the district visited by the train will result.

—F. H. Kiser, Photo.