

HEAVY TRANSFERS SHOWN IN WEEK

Record Made in County Clerk's Office of Over \$150,000 Daily Average.

GOOD MOVEMENT TO WEST

Prices of Building Material on Strong Basis and Demand for Lumber Particularly Keeps Mills Busy Meeting Wants.

Real estate transfers for five days of the last week averaged over \$150,000 a day, as shown on the records of the County Clerk's office.

There was a fairly large daily average in building permits, it being about \$40,000. One of the permits that attracted attention was that for excavations for the new Arlington Club building to be erected at Salmon and Park streets.

Morrison Street Attractive.

The sale of a prominent corner on upper Morrison street, made by F. O. Northrup during the week, has turned the attention of buyers to that district again.

The street committee of the Council has recommended the passage of an ordinance to open Alder street through to Washington from Chapman street, and similar action with reference to Morrison is advocated by property-owners along that street.

Heavy Deals in Timber.

There has been considerable stir in timber lands recently, several large tracts being sold in the past few weeks.

BUY TRACT OF FINE LAND

Los Angeles Investors Take Ten Acres on East Side.

The Portland Trust Company sold last week for E. Street, 10 acres at the southwest corner of East Sixtieth and East Gilliam streets for \$12,500.

Umatilla Towns Advertise.

The spirit of public enterprise has asserted itself at Milton and Free-water, two Umatilla towns, according to a report received yesterday by Tom Richardson, manager of the Portland Commercial Club.

Local Demand is Brisk.

The local demand for building lumber continues brisk, and it only needs a trip around town to convince the most skeptical that more houses are going up at present than ever before at this season of the year.

PLANS FOR COSTLY EDIFICE

Pastor at Sunnyside Church Receives Drawings for Building.

Rev. W. F. Euster and the official board of the Sunnyside church adopted the competitive plan in securing designs for the proposed new edifice to be erected on East Thirty-fifth and East Yamhill streets.

CARLINE WILL BE RUSHED

Material Being Delivered for Extension Through Irvington Park.

Material is now being delivered on East

Thirty-fifth street for the construction of the carline from Alberta street north through Irvington Park. This extension is of the best possible construction, 60-pound rails, laid on gravel ballast six inches under ties and to carry standard over-head work.

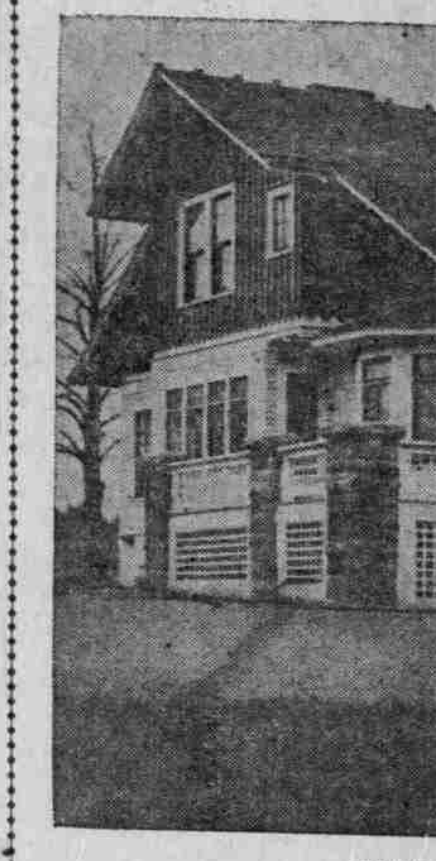
PICK UP SITES FOR BUSINESS

Desirable Locations Being Improved in Substantial Manner.

While residence sales on the East Side are steadily on the increase and Spring building is already under way, sales of business locations in East Portland and Albina have not been numerous.

POPULAR TYPE OF PORTLAND SUBURBAN RESIDENCE.

COTTAGE OF L. E. CARTER, 1319 HANCOCK STREET.



COTTAGE OF L. E. CARTER, 1319 HANCOCK STREET.

PLEASED WITH CITY

Edward T. Foulkes, Architect, Visits Old Home.

PRaises BUILDINGS HERE

Member of San Francisco Firm Also Comments on Substantial Manner in Which That City is Going Ahead With Construction.

Among visitors to Portland last week was Edward T. Foulkes, one of the leading architectural firms of San Francisco, a son of Mr. and Mrs. Robert Foulkes, of Portland, whom he has been visiting in this city.

Must Provide Against Quakes.

"In San Francisco we have a possibility to consider which you in Portland are happily relieved of, that of earthquakes. None of us believe that a recurrence of the 'shake' of three years ago is likely to come, but all the same there is less mill construction there than I find here.

By all the principal retail establishments

have returned to their former locations, and in most instances occupy eight to twelve-story buildings.

High-Class Dwellings in Process of Construction Seen in Every East Side District.

In the Ladd tract, south of Hawthorne avenue, ten residences are being erected at an average cost of \$2500.

Forty lots were sold in Waverleigh

Addition the past two weeks at a cost of \$27,500. These lots have gone to people who will erect modern homes in this Spring.

Big Deal in North End.

Lots 1 and 4, block 230, Couch Addition have been sold by Dr. Andrew C. Smith to W. D. Jellison, a local capitalist.

Many New Hotels Built.

There are now completed a large number of hotels and some of the big hotels are either reopened on their old locations or are nearing completion.

Club Secretary Accused.

SEATTLE, Wash., March 20.—O. H. Hubert, former secretary of the Vancouver Club, was arrested here this morning on telegraphic advices from Vancouver charging him with the embezzlement of \$1500.

KILLS ONE TO SAVE PARTY

Freighter Turns Team Over Precipice to Avoid Auto Collision.

SAN BERNARDINO, Cal., March 20.—In a desperate effort to save a party of automobilists at the foot of a steep grade in the Wild Rose Canyon, down which he was being dragged by his runaway team yesterday, C. E. Corbin swung the horses over the brink of the embankment, killing Ellis Epperton, a swamper, and three of the animals. Corbin escaped without injury.

PHOENIX IRON WORKS

Engineers, Founders, Machinists and Boiler-makers, Building and Structural Work.

WE MAKE Fire Hydrants, Log Hauls, Cast Gears, Hydraulic Glands, Water Gates, Lumber Trucks, etc.

Hawthorne Ave. and East Third PORTLAND, OR.

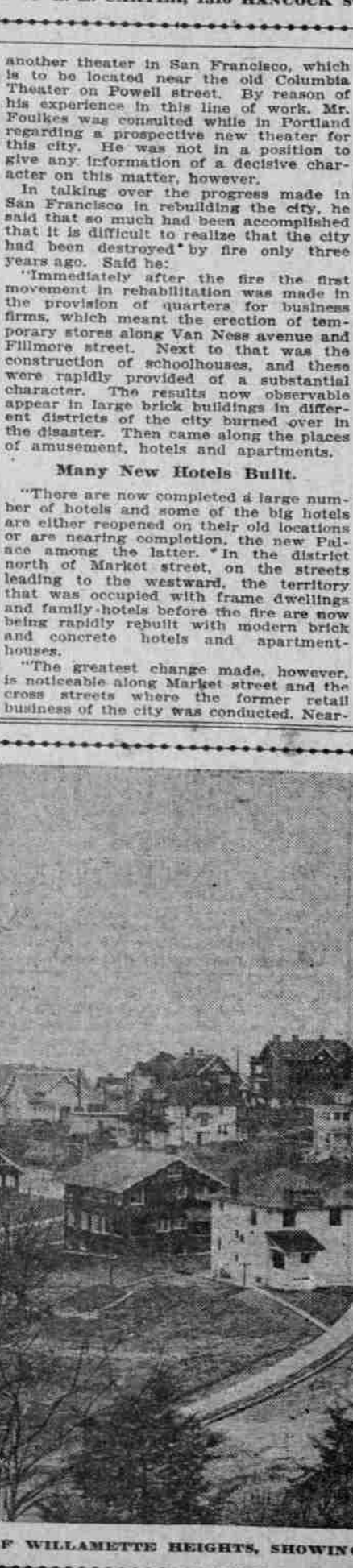
Home Makers

Man builds the house—woman makes the home. Yet the best woman in the world can't make wooden floors on bathrooms, lavatories and public entries sanitary.

Demand vitrified tiling—it will assure domestic health and increase earning capacity of your property by higher rentals. Phone for estimates or call and ask for practical display.

M. J. WALSH COMPANY SALESROOMS 311 STARK STREET

VIEW OF WILLAMETTE HEIGHTS, SHOWING RESIDENCES RECENTLY CONSTRUCTED.



by all the principal retail establishments have returned to their former locations, and in most instances occupy eight to twelve-story buildings.

Must Provide Against Quakes.

"In San Francisco we have a possibility to consider which you in Portland are happily relieved of, that of earthquakes. None of us believe that a recurrence of the 'shake' of three years ago is likely to come, but all the same there is less mill construction there than I find here.

High-Class Dwellings in Process of Construction Seen in Every East Side District.

In the Ladd tract, south of Hawthorne avenue, ten residences are being erected at an average cost of \$2500.

Forty lots were sold in Waverleigh

Addition the past two weeks at a cost of \$27,500. These lots have gone to people who will erect modern homes in this Spring.

Big Deal in North End.

Lots 1 and 4, block 230, Couch Addition have been sold by Dr. Andrew C. Smith to W. D. Jellison, a local capitalist.

Many New Hotels Built.

There are now completed a large number of hotels and some of the big hotels are either reopened on their old locations or are nearing completion.

Club Secretary Accused.

SEATTLE, Wash., March 20.—O. H. Hubert, former secretary of the Vancouver Club, was arrested here this morning on telegraphic advices from Vancouver charging him with the embezzlement of \$1500.

KILLS ONE TO SAVE PARTY

Freighter Turns Team Over Precipice to Avoid Auto Collision.

SAN BERNARDINO, Cal., March 20.—In a desperate effort to save a party of automobilists at the foot of a steep grade in the Wild Rose Canyon, down which he was being dragged by his runaway team yesterday, C. E. Corbin swung the horses over the brink of the embankment, killing Ellis Epperton, a swamper, and three of the animals. Corbin escaped without injury.

PHOENIX IRON WORKS

Engineers, Founders, Machinists and Boiler-makers, Building and Structural Work.

WE MAKE Fire Hydrants, Log Hauls, Cast Gears, Hydraulic Glands, Water Gates, Lumber Trucks, etc.

Hawthorne Ave. and East Third PORTLAND, OR.

Home Makers

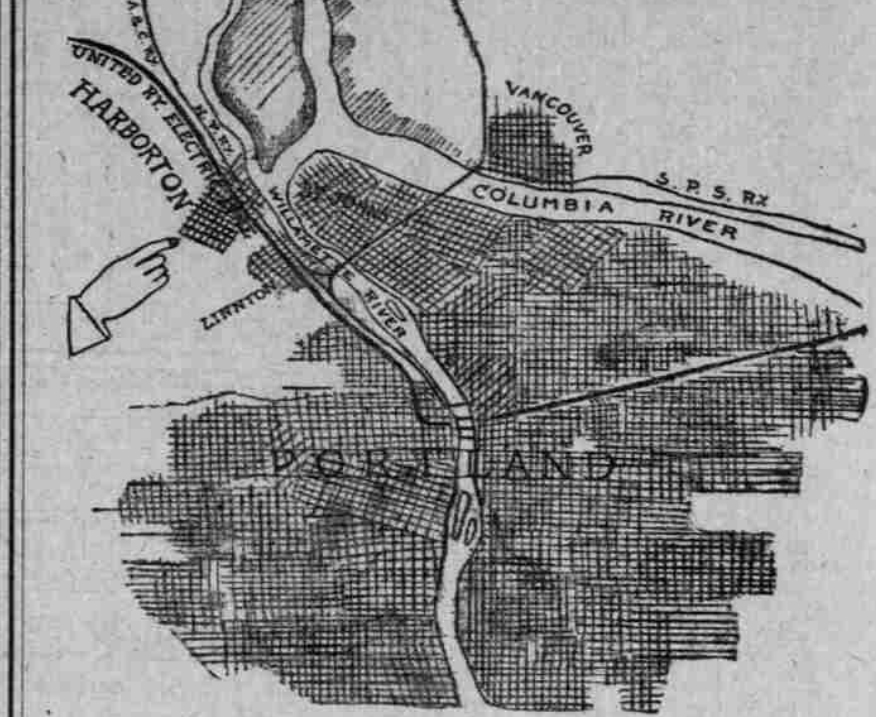
Man builds the house—woman makes the home. Yet the best woman in the world can't make wooden floors on bathrooms, lavatories and public entries sanitary.

Demand vitrified tiling—it will assure domestic health and increase earning capacity of your property by higher rentals. Phone for estimates or call and ask for practical display.

M. J. WALSH COMPANY SALESROOMS 311 STARK STREET

VIEW OF WILLAMETTE HEIGHTS, SHOWING RESIDENCES RECENTLY CONSTRUCTED.

"WATCH THE MOVEMENT DOWN THE RIVER" HARBORTON ON UNITED RAILWAYS AND NORTHERN PACIFIC



- West Side City View River View Mountain View Two Railroads Electric Line Spring Water Electric Lights

RICHEST of rich land for fruit growing and gardening. Beautiful standing trees for parks and grounds. Substation on the property. Power for factories, beautiful building spots. Ideal factory sites. Lots \$175 Up---Easy Payments--- Acres \$300 Up

SHEPARD & HARDY, Agents 1018 Board of Trade Building, Portland, Oregon

SPEND MONEY FOR HOMES

BUILDING MOVEMENT ON EAST SIDE CONTINUES.

High-Class Dwellings in Process of Construction Seen in Every East Side District.

In the Ladd tract, south of Hawthorne avenue, ten residences are being erected at an average cost of \$2500.

Forty lots were sold in Waverleigh Addition the past two weeks at a cost of \$27,500.

Big Deal in North End. Lots 1 and 4, block 230, Couch Addition have been sold by Dr. Andrew C. Smith to W. D. Jellison, a local capitalist.

Many New Hotels Built. There are now completed a large number of hotels and some of the big hotels are either reopened on their old locations or are nearing completion.

Club Secretary Accused. SEATTLE, Wash., March 20.—O. H. Hubert, former secretary of the Vancouver Club, was arrested here this morning on telegraphic advices from Vancouver charging him with the embezzlement of \$1500.

KILLS ONE TO SAVE PARTY. Freighter Turns Team Over Precipice to Avoid Auto Collision.

SAN BERNARDINO, Cal., March 20.—In a desperate effort to save a party of automobilists at the foot of a steep grade in the Wild Rose Canyon, down which he was being dragged by his runaway team yesterday, C. E. Corbin swung the horses over the brink of the embankment, killing Ellis Epperton, a swamper, and three of the animals. Corbin escaped without injury.

PHOENIX IRON WORKS. Engineers, Founders, Machinists and Boiler-makers, Building and Structural Work.

WE MAKE Fire Hydrants, Log Hauls, Cast Gears, Hydraulic Glands, Water Gates, Lumber Trucks, etc.

Hawthorne Ave. and East Third PORTLAND, OR.

Home Makers. Man builds the house—woman makes the home. Yet the best woman in the world can't make wooden floors on bathrooms, lavatories and public entries sanitary.

Demand vitrified tiling—it will assure domestic health and increase earning capacity of your property by higher rentals. Phone for estimates or call and ask for practical display.

M. J. WALSH COMPANY SALESROOMS 311 STARK STREET

VIEW OF WILLAMETTE HEIGHTS, SHOWING RESIDENCES RECENTLY CONSTRUCTED.



WANTS NEW FREIGHT DEPOT

W. H. MALL TELLS OF NEED ON EAST SIDE.

Believes Wholesale Business Alone Demands Better Transportation Facilities at Present.

"The most important improvement for the East Side at present," says W. H. Mall, "is the establishment of an ample freight depot in the warehouse district for the use of the growing business in that portion of the city. The passenger depot, now being erected by the Harriman lines on East First street, is all right, but in my judgment it is even second in importance to a freight depot.

"When one considers what has been built in the warehouse district and what is projected it is seen at once that this freight depot is needed even now.

"The National Cold Storage & Ice Manufacturing Company has broken ground for a big plant in this district, which will handle much freight, and other establishments will need freight facilities. The push club can do no better work than to pull for a freight depot, and the business men should insist that such a depot be erected."

Club Secretary Accused.

SEATTLE, Wash., March 20.—O. H. Hubert, former secretary of the Vancouver Club, was arrested here this morning on telegraphic advices from Vancouver charging him with the embezzlement of \$1500.

Murphy & Caswell have secured 75 acres on the Edger road, just outside the city limits, and will plant the same in 2 1/2 and five-acre tracts in the near future.

Willard Foster, of the North Foster Lumber Company, of Foster, Wis., has purchased three lots in Irvington. He recently visited Portland and may make his home here.

PHOENIX IRON WORKS

Engineers, Founders, Machinists and Boiler-makers, Building and Structural Work.

WE MAKE Fire Hydrants, Log Hauls, Cast Gears, Hydraulic Glands, Water Gates, Lumber Trucks, etc.

Hawthorne Ave. and East Third PORTLAND, OR.

Home Makers

Man builds the house—woman makes the home. Yet the best woman in the world can't make wooden floors on bathrooms, lavatories and public entries sanitary.

Demand vitrified tiling—it will assure domestic health and increase earning capacity of your property by higher rentals. Phone for estimates or call and ask for practical display.

M. J. WALSH COMPANY SALESROOMS 311 STARK STREET