

# BOOSTING OREGON IN OLD ENGLAND

## BISHOP SCADDING SEIZES THE OPPORTUNITY TO EXPLOIT OUR NATURAL RESOURCES AT THE LAMBETH CONFERENCE



THE RIGHT REV. R. T. DAVIDSON, ARCHBISHOP OF CANTEBURY

### ARCH BISHOP OF CANTERBURY PRESIDING OFFICER

The Lambeth Conference, now being held in England, is attended by 29 bishops, of whom 40 are from the Episcopal Church in the United States. The sessions are held daily from 10:30 A. M. till 5 P. M., with one hour for luncheon, which is provided by the Archbishop of Canterbury at Lambeth palace. In the evenings and on Sundays, missionary meetings are held in various parts of England, in which the American bishops take an active part. At Shrewsbury an open-air mass meeting was held, which was unique. The bishops, clergy and vested choir, headed by a brass band, assembled in the main street at 7 P. M., and marched in procession through the

streets to a large park, called "The Quarry." Of this remarkable meeting the Shrewsbury Chronicle says: "The history of Shrewsbury furnishes no parallel to the great impressive service of intercession and thanksgiving. A procession was formed from the Square, in which most of the local clergy joined. Members of the various choirs also walked in their surplices, and the procession was headed by the Artillery Band, under Mr. J. C. Bowler. The streets were lined with thousands, delightful weather prevailed, and the proceedings throughout were a conspicuous success. A platform had been erected close to the bandstand, while the band occupied the latter and accompanied the hymns."



END OF MISSIONARY PROCESSION IN STREET OF ROCHESTER



BISHOP CHAS. SCADDING

### THE KING WHO RECEIVED THE BISHOPS AT BUCKINGHAM PALACE

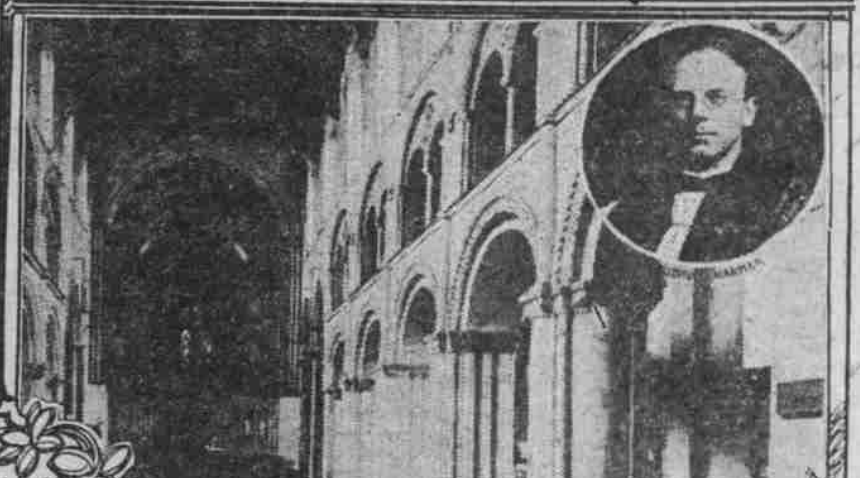
The speakers were the Bishops of Qu'Appelle, who spoke for Canada, describing its productiveness and the missionary problems arising out of Canada's vast incoming population; a colored missionary from South Africa, and then the Bishop of Oregon, representing the Pacific Coast.

American Assimilative Power. Bishop Scadding said he could claim all and more of the advantages for Oregon than the Bishop of Qu'Appelle had claimed for Canada in the way of offering religious, educational and commercial advantages to the settler, but he had brought with him a leaflet, which was widely circulated, giving interesting facts about Oregon, and he would

confine his speech to educational and religious problems, saying that "the races which can assimilate other races and help them forward are those which prosper, and the races which cannot are those which are on the decline." That truth applied perhaps more fully to the United States and to the Anglo-Saxon race all over the world than it did to any other. We saw a marvelous power of assimilation on the part of the Anglo-Saxon race in an extraordinary degree in the United States of America. There we found men of every race coming to take up their abode, and somehow or other drawn into one nationality, assimilated by those who carried the government of that country and formed the nucleus of the population.



AMERICAN BISHOPS BISHOPS OF OREGON, UTAH, SOUTH DAKOTA AND SPRINGFIELD



### ROCHESTER CATHEDRAL WHERE BISHOP SCADDING PREACHED

ed that to the race he saw an illustration of it in America, Canada and other places. He thought they might apply the same test to the Church of Christ; that communion was healthy which had the power of assimilation. And in connection with that thought he would point out that the one thing which seemed to mark the whole of the congress in London was the different point of view from which the church looked upon a great many problems affecting the whole of human society socially and religiously now to what she did 50, 40 or 50 years ago and that doctrine of assimilation came in to help them greatly there because they had to illustrate spiritual processes by natural processes, and they had to apply the terms of the natural to the spiritual in order to make them intelligible. Therefore might they not as they could take that power of assimilation as the test of the health of the human body and as a test of the health of any nation or of a race, take it also as a test of the health of a spiritual body—the Church of Christ—of that communion of the church to which they belonged? What did they see going on here? They saw, and they thanked God for it, a wonderful power of assimilation. They were brought into contact with all the nations of the world and all races of people to a degree which was impossible a century ago. They were brought into contact with fellow-creatures who had their own ways of thinking, who had their own work to perform in the world, who were God's care as well as themselves, and were redeemed of Christ as well as themselves. To those races the church had to bring a message, and it went to them as a living body and in a healthy state, and one that would assimilate. Bishop Scadding concluded: "To our shores come Germans, Swedes, Italians, Russians, French, representatives from every nation under heaven. It is the glory of America that she is doing, and can do a greater good for mankind than Britain can possibly do, by reason of our very opportunities."

by choice and adoption rather than by more accident of birth. "Yes, it is the pride and joy of America, that under the freedom of her constitutional American Constitution she welcomes all nations, kindreds, tongues; she bends willingly and bravely to 'take up the white man's burden,' and if in the veins of these new-born peoples there flows no drop of Anglo-Saxon blood, yet in an incredibly short time the Anglo-Saxon speech is on their tongues, and American ideas and principles within their minds and hearts."

Similar services were held in Liverpool, Rochester, Hereford, London and elsewhere.

Oregon's Great Resources. Following is an editorial in the Daily Post and Mercury after Bishop Scadding's public address in Liverpool: Among the interesting personalities brought to England by the Pan-Anglican conference is the Bishop of Oregon. A glimpse at what he has to do and where he has to do it affords a revelation. His travels take him over vast districts in which the population is scanty. What does the State of Oregon mean in point of size? Who will guess? England, Scotland and Wales could be placed inside Oregon, and then there would be ample space all around. The good bishop gives a bound account of his work. Not all his traveling is difficult. Oh, no. Many of the parishes and missions "where the beautiful Willamette," and there the bishop can reach by well-appointed trains on the Southern Pacific Railroad. But West Oregon is a different matter. The interior and along the coast are much more difficult to reach. They mean long drives by stage. What impressions are made of that Oregon has great promise. In the mountain ranges of the vast area is untold wealth of minerals. There are forests of the finest cedar and Oregon fir. There are great fisheries, wonderful rivers, deep harbors, a seacoast of over 500 miles. Millions of acres of unappropriated rich agricultural lands. All this must make Oregon presently one of the richest states in the world. While the great growth of the province is mostly a new reading of it—religion is likely enough to starve. The resources are ample, but Oregon is the land of the future, and more sturdy settlers with some capital. The Bishop and Mrs. Scadding sail from Liverpool by the P. & O. steamer Empress of Ireland, August 9, immediately after the close of the Lambeth Conference, and expect to reach Portland during first week in September. LONDON, S. E., July 14.

# THE BRITISH LLOYDS AND ELECTION BETS

This Concern for Two Centuries Has Been Backing Strange Risks—Its Insurance Policies Against Bryan

WHEN the fact was heralded a few days ago that the time-honored election betting in the financial district, made impossible by the new anti-gambling laws, might be revived under the respectable auspices of the ancient Lloyds of London, through the medium of "insurance" policies against Mr. Bryan's election, the insurance brokers were flooded with a tide of strange clients anxious to get their money down. Many of these sporting gentlemen, accustomed to call a spade by its plain name, who were turned down, none too gently, by outraged and indignant brokers in international insurance, are perhaps still at a loss to fathom the fine distinctions drawn by modern successors of the 17th century patrons of Edward Lloyd's old coffee house in Tower street.

To them it was explained that Lloyds, known to the four corners of the earth as the one place where every vagary of fate could be discounted in cash, was not a gambling establishment, that the same underwriters who wrote insurance against Harry Thaw's conviction, who have carried for a generation a policy against the toppling of the Nelson monument upon the premises of a Strand tradesman, and who for centuries have written policies against every conceivable human disaster from the death of kings to rain on a gala day, would not take "wagers."

two months preceding the election, was insured against loss in the event of Bryan's election by paying a premium of 10 guineas per cent. As the guinea is a shilling in excess of a pound, the premium of 10 guineas in £100 is equivalent to 10 1/2 per cent. The amount of this policy remains a secret between the principals, but it has not been denied that it was well up toward £100,000. "Lloyds are a canny crowd of Britishers, and with a wary eye on the uncertainties of the American public, even a shilling in excess of a pound, the premium of 10 guineas in £100 is equivalent to 10 1/2 per cent. The amount of this policy remains a secret between the principals, but it has not been denied that it was well up toward £100,000. "Lloyds are a canny crowd of Britishers, and with a wary eye on the uncertainties of the American public, even a shilling in excess of a pound, the premium of 10 guineas in £100 is equivalent to 10 1/2 per cent. The amount of this policy remains a secret between the principals, but it has not been denied that it was well up toward £100,000. "Lloyds are a canny crowd of Britishers, and with a wary eye on the uncertainties of the American public, even a shilling in excess of a pound, the premium of 10 guineas in £100 is equivalent to 10 1/2 per cent. The amount of this policy remains a secret between the principals, but it has not been denied that it was well up toward £100,000. "Lloyds are a canny crowd of Britishers, and with a wary eye on the uncertainties of the American public, even a shilling in excess of a pound, the premium of 10 guineas in £100 is equivalent to 10 1/2 per cent. The amount of this policy remains a secret between the principals, but it has not been denied that it was well up toward £100,000. "Lloyds are a canny crowd of Britishers, and with a wary eye on the uncertainties of the American public, even a shilling in excess of a pound, the premium of 10 guineas in £100 is equivalent to 10 1/2 per cent. The amount of this policy remains a secret between the principals, but it has not been denied that it was well up toward £100,000. "Lloyds are a canny crowd of Britishers, and with a wary eye on the uncertainties of the American public, even a shilling in excess of a pound, the premium of 10 guineas in £100 is equivalent to 10 1/2 per cent. The amount of this policy remains a secret between the principals, but it has not been denied that it was well up toward £100,000. "Lloyds are a canny crowd of Britishers, and with a wary eye on the uncertainties of the American public, even a shilling in excess of a pound, the premium of 10 guineas in £100 is equivalent to 10 1/2 per cent. The amount of this policy remains a secret between the principals, but it has not been denied that it was well up toward £100,000. "Lloyds are a canny crowd of Britishers, and with a wary eye on the uncertainties of the American public, even a shilling in excess of a pound, the premium of 10 guineas in £100 is equivalent to 10 1/2 per cent. The amount of this policy remains a secret between the principals, but it has not been denied that it was well up toward £100,000. "Lloyds are a canny crowd of Britishers, and with a wary eye on the uncertainties of the American public, even a shilling in excess of a pound, the premium of 10 guineas in £100 is equivalent to 10 1/2 per cent. The amount of this policy remains a secret between the principals, but it has not been denied that it was well up toward £100,000. "Lloyds are a canny crowd of Britishers, and with a wary eye on the uncertainties of the American public, even a shilling in excess of a pound, the premium of 10 guineas in £100 is equivalent to 10 1/2 per cent. The amount of this policy remains a secret between the principals, but it has not been denied that it was well up toward £100,000. "Lloyds are a canny crowd of Britishers, and with a wary eye on the uncertainties of the American public, even a shilling in excess of a pound, the premium of 10 guineas in £100 is equivalent to 10 1/2 per cent. The amount of this policy remains a secret between the principals, but it has not been denied that it was well up toward £100,000. "Lloyds are a canny crowd of Britishers, and with a wary eye on the uncertainties of the American public, even a shilling in excess of a pound, the premium of 10 guineas in £100 is equivalent to 10 1/2 per cent. The amount of this policy remains a secret between the principals, but it has not been denied that it was well up toward £100,000. "Lloyds are a canny crowd of Britishers, and with a wary eye on the uncertainties of the American public, even a shilling in excess of a pound, the premium of 10 guineas in £100 is equivalent to 10 1/2 per cent. The amount of this policy remains a secret between the principals, but it has not been denied that it was well up toward £100,000. "Lloyds are a canny crowd of Britishers, and with a wary eye on the uncertainties of the American public, even a shilling in excess of a pound, the premium of 10 guineas in £100 is equivalent to 10 1/2 per cent. The amount of this policy remains a secret between the principals, but it has not been denied that it was well up toward £100,000. "Lloyds are a canny crowd of Britishers, and with a wary eye on the uncertainties of the American public, even a shilling in excess of a pound, the premium of 10 guineas in £100 is equivalent to 10 1/2 per cent. The amount of this policy remains a secret between the principals, but it has not been denied that it was well up toward £100,000. "Lloyds are a canny crowd of Britishers, and with a wary eye on the uncertainties of the American public, even a shilling in excess of a pound, the premium of 10 guineas in £100 is equivalent to 10 1/2 per cent. The amount of this policy remains a secret between the principals, but it has not been denied that it was well up toward £100,000. "Lloyds are a canny crowd of Britishers, and with a wary eye on the uncertainties of the American public, even a shilling in excess of a pound, the premium of 10 guineas in £100 is equivalent to 10 1/2 per cent. The amount of this policy remains a secret between the principals, but it has not been denied that it was well up toward £100,000. "Lloyds are a canny crowd of Britishers, and with a wary eye on the uncertainties of the American public, even a shilling in excess of a pound, the premium of 10 guineas in £100 is equivalent to 10 1/2 per cent. The amount of this policy remains a secret between the principals, but it has not been denied that it was well up toward £100,000. "Lloyds are a canny crowd of Britishers, and with a wary eye on the uncertainties of the American public, even a shilling in excess of a pound, the premium of 10 guineas in £100 is equivalent to 10 1/2 per cent. The amount of this policy remains a secret between the principals, but it has not been denied that it was well up toward £100,000. "Lloyds are a canny crowd of Britishers, and with a wary eye on the uncertainties of the American public, even a shilling in excess of a pound, the premium of 10 guineas in £100 is equivalent to 10 1/2 per cent. The amount of this policy remains a secret between the principals, but it has not been denied that it was well up toward £100,000. "Lloyds are a canny crowd of Britishers, and with a wary eye on the uncertainties of the American public, even a shilling in excess of a pound, the premium of 10 guineas in £100 is equivalent to 10 1/2 per cent. The amount of this policy remains a secret between the principals, but it has not been denied that it was well up toward £100,000. "Lloyds are a canny crowd of Britishers, and with a wary eye on the uncertainties of the American public, even a shilling in excess of a pound, the premium of 10 guineas in £100 is equivalent to 10 1/2 per cent. The amount of this policy remains a secret between the principals, but it has not been denied that it was well up toward £100,000. "Lloyds are a canny crowd of Britishers, and with a wary eye on the uncertainties of the American public, even a shilling in excess of a pound, the premium of 10 guineas in £100 is equivalent to 10 1/2 per cent. The amount of this policy remains a secret between the principals, but it has not been denied that it was well up toward £100,000. "Lloyds are a canny crowd of Britishers, and with a wary eye on the uncertainties of the American public, even a shilling in excess of a pound, the premium of 10 guineas in £100 is equivalent to 10 1/2 per cent. The amount of this policy remains a secret between the principals, but it has not been denied that it was well up toward £100,000. "Lloyds are a canny crowd of Britishers, and with a wary eye on the uncertainties of the American public, even a shilling in excess of a pound, the premium of 10 guineas in £100 is equivalent to 10 1/2 per cent. The amount of this policy remains a secret between the principals, but it has not been denied that it was well up toward £100,000. "Lloyds are a canny crowd of Britishers, and with a wary eye on the uncertainties of the American public, even a shilling in excess of a pound, the premium of 10 guineas in £100 is equivalent to 10 1/2 per cent. The amount of this policy remains a secret between the principals, but it has not been denied that it was well up toward £100,000. "Lloyds are a canny crowd of Britishers, and with a wary eye on the uncertainties of the American public, even a shilling in excess of a pound, the premium of 10 guineas in £100 is equivalent to 10 1/2 per cent. The amount of this policy remains a secret between the principals, but it has not been denied that it was well up toward £100,000. "Lloyds are a canny crowd of Britishers, and with a wary eye on the uncertainties of the American public, even a shilling in excess of a pound, the premium of 10 guineas in £100 is equivalent to 10 1/2 per cent. The amount of this policy remains a secret between the principals, but it has not been denied that it was well up toward £100,000. "Lloyds are a canny crowd of Britishers, and with a wary eye on the uncertainties of the American public, even a shilling in excess of a pound, the premium of 10 guineas in £100 is equivalent to 10 1/2 per cent. The amount of this policy remains a secret between the principals, but it has not been denied that it was well up toward £100,000. "Lloyds are a canny crowd of Britishers, and with a wary eye on the uncertainties of the American public, even a shilling in excess of a pound, the premium of 10 guineas in £100 is equivalent to 10 1/2 per cent. The amount of this policy remains a secret between the principals, but it has not been denied that it was well up toward £100,000. "Lloyds are a canny crowd of Britishers, and with a wary eye on the uncertainties of the American public, even a shilling in excess of a pound, the premium of 10 guineas in £100 is equivalent to 10 1/2 per cent. The amount of this policy remains a secret between the principals, but it has not been denied that it was well up toward £100,000. "Lloyds are a canny crowd of Britishers, and with a wary eye on the uncertainties of the American public, even a shilling in excess of a pound, the premium of 10 guineas in £100 is equivalent to 10 1/2 per cent. The amount of this policy remains a secret between the principals, but it has not been denied that it was well up toward £100,000. "Lloyds are a canny crowd of Britishers, and with a wary eye on the uncertainties of the American public, even a shilling in excess of a pound, the premium of 10 guineas in £100 is equivalent to 10 1/2 per cent. The amount of this policy remains a secret between the principals, but it has not been denied that it was well up toward £100,000. "Lloyds are a canny crowd of Britishers, and with a wary eye on the uncertainties of the American public, even a shilling in excess of a pound, the premium of 10 guineas in £100 is equivalent to 10 1/2 per cent. The amount of this policy remains a secret between the principals, but it has not been denied that it was well up toward £100,000. "Lloyds are a canny crowd of Britishers, and with a wary eye on the uncertainties of the American public, even a shilling in excess of a pound, the premium of 10 guineas in £100 is equivalent to 10 1/2 per cent. The amount of this policy remains a secret between the principals, but it has not been denied that it was well up toward £100,000. "Lloyds are a canny crowd of Britishers, and with a wary eye on the uncertainties of the American public, even a shilling in excess of a pound, the premium of 10 guineas in £100 is equivalent to 10 1/2 per cent. The amount of this policy remains a secret between the principals, but it has not been denied that it was well up toward £100,000. "Lloyds are a canny crowd of Britishers, and with a wary eye on the uncertainties of the American public, even a shilling in excess of a pound, the premium of 10 guineas in £100 is equivalent to 10 1/2 per cent. The amount of this policy remains a secret between the principals, but it has not been denied that it was well up toward £100,000. "Lloyds are a canny crowd of Britishers, and with a wary eye on the uncertainties of the American public, even a shilling in excess of a pound, the premium of 10 guineas in £100 is equivalent to 10 1/2 per cent. The amount of this policy remains a secret between the principals, but it has not been denied that it was well up toward £100,000. "Lloyds are a canny crowd of Britishers, and with a wary eye on the uncertainties of the American public, even a shilling in excess of a pound, the premium of 10 guineas in £100 is equivalent to 10 1/2 per cent. The amount of this policy remains a secret between the principals, but it has not been denied that it was well up toward £100,000. "Lloyds are a canny crowd of Britishers, and with a wary eye on the uncertainties of the American public, even a shilling in excess of a pound, the premium of 10 guineas in £100 is equivalent to 10 1/2 per cent. The amount of this policy remains a secret between the principals, but it has not been denied that it was well up toward £100,000. "Lloyds are a canny crowd of Britishers, and with a wary eye on the uncertainties of the American public, even a shilling in excess of a pound, the premium of 10 guineas in £100 is equivalent to 10 1/2 per cent. The amount of this policy remains a secret between the principals, but it has not been denied that it was well up toward £100,000. "Lloyds are a canny crowd of Britishers, and with a wary eye on the uncertainties of the American public, even a shilling in excess of a pound, the premium of 10 guineas in £100 is equivalent to 10 1/2 per cent. The amount of this policy remains a secret between the principals, but it has not been denied that it was well up toward £100,000. "Lloyds are a canny crowd of Britishers, and with a wary eye on the uncertainties of the American public, even a shilling in excess of a pound, the premium of 10 guineas in £100 is equivalent to 10 1/2 per cent. The amount of this policy remains a secret between the principals, but it has not been denied that it was well up toward £100,000. "Lloyds are a canny crowd of Britishers, and with a wary eye on the uncertainties of the American public, even a shilling in excess of a pound, the premium of 10 guineas in £100 is equivalent to 10 1/2 per cent. The amount of this policy remains a secret between the principals, but it has not been denied that it was well up toward £100,000. "Lloyds are a canny crowd of Britishers, and with a wary eye on the uncertainties of the American public, even a shilling in excess of a pound, the premium of 10 guineas in £100 is equivalent to 10 1/2 per cent. The amount of this policy remains a secret between the principals, but it has not been denied that it was well up toward £100,000. "Lloyds are a canny crowd of Britishers, and with a wary eye on the uncertainties of the American public, even a shilling in excess of a pound, the premium of 10 guineas in £100 is equivalent to 10 1/2 per cent. The amount of this policy remains a secret between the principals, but it has not been denied that it was well up toward £100,000. "Lloyds are a canny crowd of Britishers, and with a wary eye on the uncertainties of the American public, even a shilling in excess of a pound, the premium of 10 guineas in £100 is equivalent to 10 1/2 per cent. The amount of this policy remains a secret between the principals, but it has not been denied that it was well up toward £100,000. "Lloyds are a canny crowd of Britishers, and with a wary eye on the uncertainties of the American public, even a shilling in excess of a pound, the premium of 10 guineas in £100 is equivalent to 10 1/2 per cent. The amount of this policy remains a secret between the principals, but it has not been denied that it was well up toward £100,000. "Lloyds are a canny crowd of Britishers, and with a wary eye on the uncertainties of the American public, even a shilling in excess of a pound, the premium of 10 guineas in £100 is equivalent to 10 1/2 per cent. The amount of this policy remains a secret between the principals, but it has not been denied that it was well up toward £100,000. "Lloyds are a canny crowd of Britishers, and with a wary eye on the uncertainties of the American public, even a shilling in excess of a pound, the premium of 10 guineas in £100 is equivalent to 10 1/2 per cent. The amount of this policy remains a secret between the principals, but it has not been denied that it was well up toward £100,000. "Lloyds are a canny crowd of Britishers, and with a wary eye on the uncertainties of the American public, even a shilling in excess of a pound, the premium of 10 guineas in £100 is equivalent to 10 1/2 per cent. The amount of this policy remains a secret between the principals, but it has not been denied that it was well up toward £100,000. "Lloyds are a canny crowd of Britishers, and with a wary eye on the uncertainties of the American public, even a shilling in excess of a pound, the premium of 10 guineas in £100 is equivalent to 10 1/2 per cent. The amount of this policy remains a secret between the principals, but it has not been denied that it was well up toward £100,000. "Lloyds are a canny crowd of Britishers, and with a wary eye on the uncertainties of the American public, even a shilling in excess of a pound, the premium of 10 guineas in £100 is equivalent to 10 1/2 per cent. The amount of this policy remains a secret between the principals, but it has not been denied that it was well up toward £100,000. "Lloyds are a canny crowd of Britishers, and with a wary eye on the uncertainties of the American public, even a shilling in excess of a pound, the premium of 10 guineas in £100 is equivalent to 10 1/2 per cent. The amount of this policy remains a secret between the principals, but it has not been denied that it was well up toward £100,000. "Lloyds are a canny crowd of Britishers, and with a wary eye on the uncertainties of the American public, even a shilling in excess of a pound, the premium of 10 guineas in £100 is equivalent to 10 1/2 per cent. The amount of this policy remains a secret between the principals, but it has not been denied that it was well up toward £100,000. "Lloyds are a canny crowd of Britishers, and with a wary eye on the uncertainties of the American public, even a shilling in excess of a pound, the premium of 10 guineas in £100 is equivalent to 10 1/2 per cent. The amount of this policy remains a secret between the principals, but it has not been denied that it was well up toward £100,000. "Lloyds are a canny crowd of Britishers, and with a wary eye on the uncertainties of the American public, even a shilling in excess of a pound, the premium of 10 guineas in £100 is equivalent to 10 1/2 per cent. The amount of this policy remains a secret between the principals, but it has not been denied that it was well up toward £100,000. "Lloyds are a canny crowd of Britishers, and with a wary eye on the uncertainties of the American public, even a shilling in excess of a pound, the premium of 10 guineas in £100 is equivalent to 10 1/2 per cent. The amount of this policy remains a secret between the principals, but it has not been denied that it was well up toward £100,000. "Lloyds are a canny crowd of Britishers, and with a wary eye on the uncertainties of the American public, even a shilling in excess of a pound, the premium of 10 guineas in £100 is equivalent to 10 1/2 per cent. The amount of this policy remains a secret between the principals, but it has not been denied that it was well up toward £100,000. "Lloyds are a canny crowd of Britishers, and with a wary eye on the uncertainties of the American public, even a shilling in excess of a pound, the premium of 10 guineas in £100 is equivalent to 10 1/2 per cent. The amount of this policy remains a secret between the principals, but it has not been denied that it was well up toward £100,000. "Lloyds are a canny crowd of Britishers, and with a wary eye on the uncertainties of the American public, even a shilling in excess of a pound, the premium of 10 guineas in £100 is equivalent to 10 1/2 per cent. The amount of this policy remains a secret between the principals, but it has not been denied that it was well up toward £100,000. "Lloyds are a canny crowd of Britishers, and with a wary eye on the uncertainties of the American public, even a shilling in excess of a pound, the premium of 10 guineas in £100 is equivalent to 10 1/2 per cent. The amount of this policy remains a secret between the principals, but it has not been denied that it was well up toward £100,000. "Lloyds are a canny crowd of Britishers, and with a wary eye on the uncertainties of the American public, even a shilling in excess of a pound, the premium of 10 guineas in £100 is equivalent to 10 1/2 per cent. The amount of this policy remains a secret between the principals, but it has not been denied that it was well up toward £100,000. "Lloyds are a canny crowd of Britishers, and with a wary eye on the uncertainties of the American public, even a shilling in excess of a pound, the premium of 10 guineas in £100 is equivalent to 10 1/2 per cent. The amount of this policy remains a secret between the principals, but it has not been denied that it was well up toward £100,000. "Lloyds are a canny crowd of Britishers, and with a wary eye on the uncertainties of the American public, even a shilling in excess of a pound, the premium of 10 guineas in £100 is equivalent to 10 1/2 per cent. The amount of this policy remains a secret between the principals, but it has not been denied that it was well up toward £100,000. "Lloyds are a canny crowd of Britishers, and with a wary eye on the uncertainties of the American public, even a shilling in excess of a pound, the premium of 10 guineas in £100 is equivalent to 10 1/2 per cent. The amount of this policy remains a secret between the principals, but it has not been denied that it was well up toward £100,000. "Lloyds are a canny crowd of Britishers, and with a wary eye on the uncertainties of the American public, even a shilling in excess of a pound, the premium of 10 guineas in £100 is equivalent to 10 1/2 per cent. The amount of this policy remains a secret between the principals, but it has not been denied that it was well up toward £100,000. "Lloyds are a canny crowd of Britishers, and with a wary eye on the uncertainties of the American public, even a shilling in excess of a pound, the premium of 10 guineas in £100 is equivalent to 10 1/2 per cent. The amount of this policy remains a secret between the principals, but it has not been denied that it was well up toward £100,000. "Lloyds are a canny crowd of Britishers, and with a wary eye on the uncertainties of the American public, even a shilling in excess of a pound, the premium of 10 guineas in £100 is equivalent to 10 1/2 per cent. The amount of this policy remains a secret between the principals, but it has not been denied that it was well up toward £100,000. "Lloyds are a canny crowd of Britishers, and with a wary eye on the uncertainties of the American public, even a shilling in excess of a pound, the premium of 10 guineas in £100 is equivalent to 10 1/2 per cent. The amount of this policy remains a secret between the principals, but it has not been denied that it was well up toward £100,000. "Lloyds are a canny crowd of Britishers, and with a wary eye on the uncertainties of the American public, even a shilling in excess of a pound, the premium of 10 guineas in £100 is equivalent to 10 1/2 per cent. The amount of this policy remains a secret between the principals, but it has not been denied that it was well up toward £100,000. "Lloyds are a canny crowd of Britishers, and with a wary eye on the uncertainties of the American public, even a shilling in excess of a pound, the premium of 10 guineas in £100 is equivalent to 10 1/2 per cent. The amount of this policy remains a secret between the principals, but it has not been denied that it was well up toward £100,000. "Lloyds are a canny crowd of Britishers, and with a wary eye on the uncertainties of the American public, even a shilling in excess of a pound, the premium of 10 guineas in £100 is equivalent to 10 1/2 per cent. The amount of this policy remains a secret between the principals, but it has not been denied that it was well up toward £100,000. "Lloyds are a canny crowd of Britishers, and with a wary eye on the uncertainties of the American public, even a shilling in excess of a pound, the premium of 10 guineas in £100 is equivalent to 10 1/2 per cent. The amount of this policy remains a secret between the principals, but it has not been denied that it was well up toward £100,000. "Lloyds are a canny crowd of Britishers, and with a wary eye on the uncertainties of the American public, even a shilling in excess of a pound, the premium of 10 guineas in £100 is equivalent to 10 1/2 per cent. The amount of this policy remains a secret between the principals, but it has not been denied that it was well up toward £100,000. "Lloyds are a canny crowd of Britishers, and with a wary eye on the uncertainties of the American public, even a shilling in excess of a pound, the premium of 10 guineas in £100 is equivalent to 10 1/2 per cent. The amount of this policy remains a secret between the principals, but it has not been denied that it was well up toward £100,000. "Lloyds are a canny crowd of Britishers, and with a wary eye on the uncertainties of the American public, even a shilling in excess of a pound, the premium of 10 guineas in £100 is equivalent to 10 1/2 per cent. The amount of this policy remains a secret between the principals, but it has not been denied that it was well up toward £100,000. "Lloyds are a canny crowd of Britishers, and with a wary eye on the uncertainties of the American public, even a shilling in excess of a pound, the premium of 10 guineas in £100 is equivalent to 10 1/2 per cent. The amount of this policy remains a secret between the principals, but it has not been denied that it was well up toward £100,000. "Lloyds are a canny crowd of Britishers, and with a wary eye on the uncertainties of the American public, even a shilling in excess of a pound, the premium of 10 guineas in £100 is equivalent to 10 1/2 per cent. The amount of this policy remains a secret between the principals, but it has not been denied that it was well up toward £100,000. "Lloyds are a canny crowd of Britishers, and with a wary eye on the uncertainties of the American public, even a shilling in excess of a pound, the premium of 10 guineas in £100 is equivalent to 10 1/2 per cent. The amount of this policy remains a secret between the principals, but it has not been denied that it was well up toward £100,000. "Lloyds are a canny crowd of Britishers, and with a wary eye on the uncertainties of the American public, even a shilling in excess of a pound, the premium of 10 guineas in £100 is equivalent to 10 1/2 per cent. The amount of this policy remains a secret between the principals, but it has not been denied that it was well up toward £100,000. "Lloyds are a canny crowd of Britishers, and with a wary eye on the uncertainties of the American public, even a shilling in excess of a pound, the premium of 10 guineas in £100 is equivalent to 10 1/2 per cent. The amount of this policy remains a secret between the principals, but it has not been denied that it was well up toward £100,000. "Lloyds are a canny crowd of Britishers, and with a wary eye on the uncertainties of the American public, even a shilling in excess of a pound, the premium of 10 guineas in £100 is equivalent to 10 1/2 per cent. The amount of this policy remains a secret between the principals, but it has not been denied that it was well up toward £100,000. "Lloyds are a canny crowd of Britishers, and with a wary eye on the uncertainties of the American public, even a shilling in excess of a pound, the premium of 10 guineas in £100 is equivalent to 10 1/2 per cent. The amount of this policy remains a secret between the principals, but it has not been denied that it was well up toward £100,000. "Lloyds are a canny crowd of Britishers, and with a wary eye on the uncertainties of the American public, even a shilling in excess of a pound, the premium of 10 guineas in £100 is equivalent to 10 1/2 per cent. The amount of this policy remains a secret between the principals, but it has not been denied that it was well up toward £100,000. "Lloyds are a canny crowd of Britishers, and with a wary eye on the uncertainties of the American public, even a shilling in excess of a pound, the premium of 10 guineas in £100 is equivalent to 10 1/2 per cent. The amount of this policy remains a secret between the principals, but it has not been denied that it was well up toward £100,000. "Lloyds are a canny crowd of Britishers, and with a wary eye on the uncertainties of the American public, even a shilling in excess of a pound, the premium of 10 guineas in £100 is equivalent to 10 1/2 per cent. The amount of this policy remains a secret between the principals, but it has not been denied that it was well up toward £100,000. "Lloyds are a canny crowd of Britishers, and with a wary eye on the uncertainties of the American public, even a shilling in excess of a pound, the premium of 10 guineas in £100 is equivalent to 10 1/2 per cent. The amount of this policy remains a secret between the principals, but it has not been denied that it was well up toward £100,000. "Lloyds are a canny crowd of Britishers, and with a wary eye on the uncertainties of the American public, even a shilling in excess of a pound, the premium of 10 guineas in £100 is equivalent to 10 1/2 per cent. The amount of this policy remains a secret between the principals, but it has not been denied that it was well up toward £100,000. "Lloyds are a canny crowd of Britishers, and with a wary eye on the uncertainties of the American public, even a shilling in excess of a pound, the premium of 10 guineas in £100 is equivalent to 10 1/2 per cent. The amount of this policy remains a secret between the principals, but it has not been denied that it was well up toward £100,000. "Lloyds are a canny crowd of Britishers, and with a wary eye on the uncertainties of the American public, even a shilling in excess of a pound, the premium of 10 guineas in £100 is equivalent to 10 1/2 per cent. The amount of this policy remains a secret between the principals, but it has not been denied that it was well up toward £100,000. "Lloyds are a canny crowd of Britishers, and with a wary eye on the uncertainties of the American public, even a shilling in excess of a pound, the premium of 10 guineas in £100 is equivalent to 10 1/2 per cent. The amount of this policy remains a secret between the principals, but it has not been denied that it was well up toward £100,000. "Lloyds are a canny crowd of Britishers, and with a wary eye on the uncertainties of the American public, even a shilling in excess of a pound, the premium of 10 guineas in £100 is equivalent to 10 1/2 per cent. The amount of this policy remains a secret between the principals, but it has not been denied that it was well up toward £100,000. "Lloyds are a canny crowd of Britishers, and with a wary eye on the uncertainties of the American public, even a shilling in excess of a pound, the premium of 10 guineas in £100 is equivalent to 10 1/2 per cent. The amount of this policy remains a secret between the principals, but it has not been denied that it was well up toward £100,000. "Lloyds are a canny crowd of Britishers, and with a wary eye on the uncertainties of the American public, even a shilling in excess of a pound, the premium of 10 guineas in £100 is equivalent to 10 1/2 per cent. The amount of this policy remains a secret between the principals, but it has not been denied that it was well up toward £100,000. "Lloyds are a canny crowd of Britishers, and with a wary eye on the uncertainties of the American public, even a shilling in excess of a pound, the premium of 10 guineas in £100 is equivalent to 10 1/2 per cent. The amount of this policy remains a secret between the principals, but it has not