

Visitors to the Rose Carnival

CAN HAVE ALL OF THEIR DENTAL WORK COMPLETED IN ONE DAY, IF THEY SO DESIRE



DR. B. E. WRIGHT.

Q We have unequalled facilities to handle work quickly and effectively. No tedious delays usually experienced at other offices. The work will be the best that it is possible to secure and executed with a promptness and skill that will be sure to merit your approval.

Q Come to Portland, enjoy the great rose carnival, and at the same time have your dental work done by a modern dentist, assisted by modern appliances in a modern twentieth century office.

Q Remember our work is so gentle that it won't spoil your enjoyment of the festival one particle.

GOOD SET OF TEETH ON RUBBER PLATE . \$5.00 BEST SET OF TEETH ON RUBBER PLATE . \$8.00

DR. B. E. WRIGHT PAINLESS DENTIST

342 1/2 Washington Street, Corner Seventh

OFFICE HOURS—8 A. M. to 6 P. M.; SUNDAYS—9 A. M. to 1 P. M.

Phone Main 2119—Twelve Years in Portland

ANOTHER CLASS GRADUATED

NORTH PACIFIC COLLEGE OF DENTISTRY EXERCISES.

In Charge to the Class, Dr. Robert C. Coffey Warns Against Practices Not Scrupulously Clean.

The large assemblage of friends of the graduating class of the North Pacific College of Dentistry that crowded the Hellig Theater from pit to dome Thursday night attested the interest felt in the annual commencement exercises of that college. The dean, Dr. Herbert C. Miller, with a few well-chosen words concerning the faithful work and qualifications of the class of 1908, turned the class over to Dr. Joseph A. Pettit, professor of Anatomy, who conferred the degree of doctor of dental medicine upon 33 young men in cap and gown. When they were given their rolls of parchment, hearty applause from the big audience followed each newly-fledged young doctor to his seat.

Dr. Pettit informed the audience that the faithful and intelligent work during three years in laboratories and classrooms that had earned them this degree could be taken as assurance of their ability to render a high grade of professional service to the public. Judge M. C. George gave the annual address, dwelling upon the remarkable advancement of the science of dentistry, which has now become a learned and scientific profession, because of the great strides made in the past 15 years.

The charge to the class was delivered by Dr. Robert C. Coffey, professor of surgery. Dr. Coffey spoke on the psychology of habit, quoting the eminent authority on this subject, William James, and emphasizing the importance of adhering to correct habits, especially on that most vital point of surgical cleanliness. Dentistry, he said, had become a specialty of medicine. The course of instruction in this college was only one year short of that in the best medical colleges in the land. This training in asepsis and surgery was qualifying them for such efficient service that those educated in the older schools, if they did not put forth great efforts to keep up with the procession, would be relegated to the "scrap heap."

He requested the audience that in selecting and patronizing a dentist they should take note of the tendencies of the operator as to cleanliness, sterilization of instruments and hands, and general aseptic precautions. He urged that if there was carelessness in this direction to shun them as the plague, for diseases of the most loathsome kind could easily be carried in this way from an infected person and implanted in a perfectly healthy and innocent individual. He referred in conclusion to the large number of graduates that had gone out from this college during the past few

years and been distributed through surrounding states.

The musical programme was in charge of Mrs. Walter Reed, assisted by Miss Kathleen Lawler and Dr. George Almslie, all of whom gave delightful vocal numbers that were most enthusiastically enjoyed. The class roll of the graduates followed:

George Edward Barton, Marshall Young Lucas, Van Robert Blyen, Arthur Truscott McMillan, Charles Clifford Burrow, Lorne Gilmore McAlooney, Donald Campbell, John Robert Marshall, Fred Edward Casey, Martin Louis Millard, Arthur I. Cornell, James Riley Morgan, Elmer Elbert Cummins, Stanley Casper Peters, Harvey Lincoln Cummins, Maurer Francis Power, Charles William Edricott, Benton Percy Hand, Rufus Sidney Eisman, Thomas James Rederich, Wilbur Willard Paulkner, James Vinton Scott, Walden Irving Ferrer, Thomas Benjamin Short, Alfred Ryan George, David Vaughan, Lawrence Robert George Orr, Cecil Goodrich, Otto Floyd Vinson, Huber Vincent Gulberson, Frank Albert Voise, Charles Augustus Hacetse, Oliver Howell Whaley, Frank Landrum Ingram, Arthur Hall Williams, Cooley Smith Long, Paul Christian Yates, Lee Harrington Wells, Henry VIII Hatfield.

ASSESSOR DOUBLES VALUE

Clatsop Official Expected to Add \$3,500,000 to Taxroll.

ASTORIA, Or., May 23.—(Special).—Assessor Cornelius is now engaged in preparing the 1908 assessment roll and while, of course, definite figures are not yet obtainable, it is probable the total valuations will show an increase of about \$3,500,000, when compared with the roll of 1907, or between 40 and 50 per cent. Last year the roll amounted to slightly over \$5,700,000, and this year it is expected to total not less than \$9,000,000.

While the tendency has been to increase the valuations year by year, the great advance at this time is in accordance with the new state law, which requires assessments be fixed at full value. Mr. Cornelius in speaking of the matter today, said he intends to double the valuations of all property on the west side of the bay, as well as lots inside the city limits and all improved lands, although there will be no increase in the valuations of improvements on either city property or lands.

Rough lands and lands on which there is standing timber will be advanced 25 per cent, while on timber, railway property and merchandise the increase will be in the neighborhood of 40 per cent, or sufficient to make the valuations double what they were four years ago. For instance, timber was assessed last year at 15, 20, 30, 45 and 55 cents per thousand feet, according to the county cruises and in accordance with its location, accessibility and quality. This year the valuation will be at the rate of 20, 30, 40, 70 and 80 cents per thousand for the respective classes.

However, the law in force this year allows the exemption of household goods and the reductions which will be granted under that provision, will probably amount to about \$150,000.

Eye Glasses \$1.00 at Letzger's.

GHEENT'S FLORAL FESTIVAL

BELGIAN CITY HOLDS REMARKABLE CENTENARY.

Celebrates the Foundation of Its Staple Industry, Which is the Growing of Flowers.

GHEENT, May 16.—Ghent is a town built on flowers, and celebrated the ceremony of the foundation of its staple industry with the most gorgeous display of certain flowers ever collected in one place. They were judged by the finest botanists of Europe—from Spain, from Italy, from Sweden, from Germany, from England; and among the English representatives on the great international jury special honor was conferred on Lord Redesdale. The reunion of these scientists in a hall of giant palms, intersected by patches of the red-tongued anthurium, one of the marvels of scientific development, was itself a wonderful study in types.

But Ghent was celebrating more than a centenary. This month there has been newly created as a permanent part of the government of Belgium a Department of Horticulture, the first ever established in any country; so vast is the national income from flowers. A single firm, one of many hundred, sent abroad last year 100,000 azaleas, the supreme flower of Ghent, which, indeed, supplies the whole world with bushes.

The King of the Belgians, as King and as Prince, has not missed a flower show of the Ghent Societe Royale d'Agriculture et de Botanique for 50 years—a jubilee as well as a centenary was being celebrated. The scene that greeted him at the opening ceremony was brilliant beyond conception. He passed through the cool aisles of colossal palms across the court into a hall an acre in extent, which was one solid mass of azaleas and hydrangeas and rhododendrons, almost too full of bloom to show a leaf.

From these he passed to the upper room, where the green of the equatorial plants and the primary colors of the azaleas were combined.

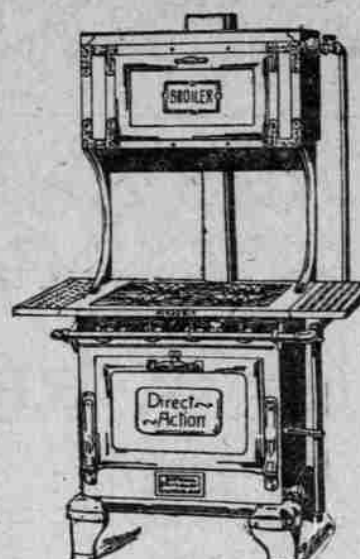
For Sale

Lease and fixtures of old quarters of the German-American Bank. Call on or address

S. A. Reed

134 Sixth Street.

GAS STOVES



The illustration above shows one of our most popular styles. It has a high combination oven and broiler, also an 18-inch low oven. High broiler oven is 18x20x12 inches. Low oven is 18x18x12. It has three regular burners, one giant burner, and one simmer burner. Range body japanned to prevent rust. Price, connected\$50.00

THE BEST IS THE CHEAPEST

First—If you have never seen the best, you can probably get along with the other kind.

Second—We can prove to your satisfaction that we can reduce your gas bill 25 per cent.

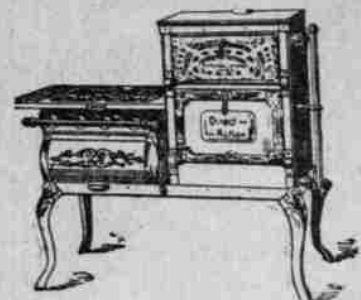
Third—We absolutely guarantee our Gas Ranges to bake evenly on top and bottom.

Fourth—They last longer, because they have no oven-bottom to burn out and no flue-walls to generate moisture and rust out.

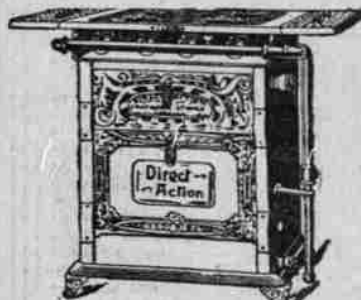
Fifth—They are economical, because you do not heat your oven when you broil or toast; you do not heat the broiler when you bake or roast.

Prices, \$24.00 to \$54.00. Easy Payments.

Ten per cent discount for cash. All new Gas Ranges connected to stub free. Old Ranges taken in exchange.

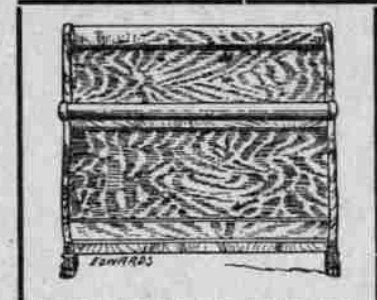


This pattern has 18-inch direct action oven with broiler separate, and a warming closet as shown. Price connected to stub in kitchen...\$50



Notice this style has broiler above the oven. The oven fire and broiler fire separate and in plain sight. Price, including connection to your stub\$31.00 TEN PER CENT OFF FOR CASH.

\$1.00 A Week



ONE-THIRD SAVED

Great price reductions mark this week's sale of Napoleon and other high-grade wooden beds.

White Maple Beds (not Napoleons), worth \$6, now \$2.45

Oak Beds (not Napoleons), worth \$7.50, now \$3.00

Oak Beds, quartered and polished, very fine, \$30 values, now \$17.75

Oak polished quartered Napoleon, very fine, \$40.00 value, now \$29.85

Large discount on all Wooden Beds in the store.

PUT A MONARCH MALLEABLE RANGE IN YOUR KITCHEN

It burns hard coal, soft coal or wood, and utilizes all the heating power of the fuel. Ordinary ranges are fuel wasters, because when steel is boiled to cast iron it is practically impossible to make tight joints, without the use of stove putty.

Such a stove may work well until the bolts become loose, or the seams open between the rivets. The putty contracts, hardens and falls out. The outside air leaks in through every seam and joint, through imperfectly closed openings at the oven door, the draft door etc., and it takes twice as much fuel to keep up the fire.

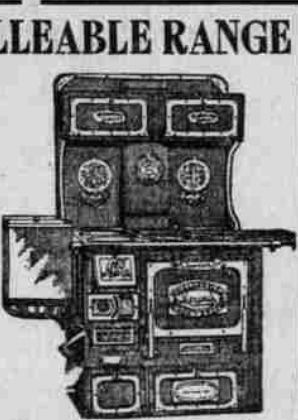
Only in this way can absolutely air-tight joints be made. There is no stove putty in a Monarch.

Each of the frames around the oven door, ash door, the pouch feed, back of oven, etc., is made of malleable iron, which insures air-tight seams without danger of leaks.

All this makes an economical, lasting range, with perfect fire control—a range that cooks well and lasts a lifetime.

A \$1.00 COOK BOOK FREE. This is a real book, not a cheap advertising circular. It is handsomely printed on good paper, bound in cloth with board covers, 144 pages.

If you could buy it at a book store it would cost you at least \$1.00.



GOCART SALE

We are offering the best values that Portland has ever seen in medium and low-priced Go-Carts.

Folding Carts, with steel wheels and gear, \$3 vals. only \$1.69

Folding Go-Carts, with rubber-tired wheels, steel gear, \$3.75 value\$2.50

Reclining Go-Carts, with adjustable foot end and back, 10-inch rubber-tired wheels, \$5.00 value, at \$3.50

Folding Go-Carts, with parasols, fancy recd body, 10-inch rubber-tired wheels, adjustable foot end and back, \$8 values, at \$5.50

The Jeweler and Optician

LEFFERTS, Publishers. ONCE A WEEK. 372 WASHINGTON STREET.

Don't forget June 1. Rose Carnival.

A poor watch is a poor companion.

The reliable dealer sells reliable watches.

Quality is the thing when buying jewelry.

Tears are good fertilizers for mental weeds. "Smile."

The world's annual output of diamonds is valued at \$50,000,000.

Don't be queer, wear a diamond. We sell all sizes of diamonds at all prices.

We have fine white diamonds, one-half karat, in 14k. gold Tiffany mounting, \$50.

Watches that satisfy all the way around the dial twice every 24 hours. The kind we sell.

Glasses not carefully prepared and ground for the particular eyes may do more harm than good.

Look at our windows and if you don't see it in the window

step inside. We certainly have it in stock.

Have your eyes tested the moment they pain, itch or when reading the letters become blurred. A stitch in time saves nine.

Parties have platforms. We have a platform of our own. Reliability and fair, honest dealing. Your money's worth every time.

The sun is shining once more. Dingy things don't look well. Bring in your old jewelry and let us put it in modern form.

You can have only one pair of eyes and they are entitled to the best. Let us be your expert optician and will give your eye troubles his personal attention.

The syndicate, otherwise the diamond trust, is selling diamonds at the same old price, no reduction. We are selling diamonds down where the profit reaches the irreducible minimum.

It matters not who will be elected in the coming election diamonds will still retain their value. We are offering a beautiful line of these stones at prices that make them a good business investment.

It is a point of pride with us that people who come here to

have their glasses fitted always report satisfaction. Mr. Leffert has had many years' experience and is careful and conscientious in his work.

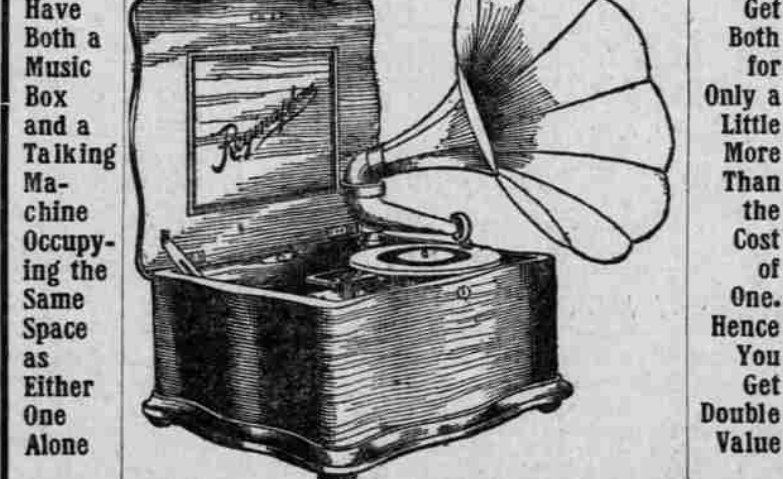
The June bride is an inspiring joy that appeals even to crusty old bachelors. In selecting your presents remember that we have made special preparation to please the victims of Cupid and his tender darts. Make the bride doubly happy with a present selected from our large and varied stock.

While Portlanders are disappointed that the battleship fleet did not visit this city, their loss is as great as ours. It is a fact that the coming Rose Carnival will be one of the most varied and beautiful exhibits ever made in the United States. Drop in and see our Rose Carnival hat pins, fobs, etc.

No watch will tell correct time if it isn't cleaned and overhauled occasionally. If your watch hasn't been cleaned for a year it's pretty certain it needs attention. With expert workmen, best materials, and all facilities for fine watch work, we promise entire satisfaction. We will loan you a watch while yours is having attention.

Reginaphone

A Regina Music Box and Talking Machine All in One



See display of these beautiful instruments in Washington-street window—it's well worth your time to hear one. Cash or payments to suit.

Here will be found not one but all the best. Victor Columbia Edison Your choice—pay a dollar a week. Cilex PIANO HOUSE Dispensers of Pianoreliability 353 WASHINGTON STREET

ONLY \$5.00 PER MONTH

CATARRH CATARRH CATARRH

IMPONDERO-THERAPY THE CURE

Catarrh, with all its distressing, disgusting and dangerous variations, affects fully seventy-five per cent of the people on this continent, men, women and children. A neglected "cold in the head" soon produces a watery discharge from the nose and eyes, "stiffness" of the head and throat, clogs the membranes with catarrhal virus, the patient loses the sense of smell, the bones of the middle ear cease to vibrate to sound, and deafness ensues. The poisonous mucous attacks the stomach, the blood carries the infection throughout the system, into the bronchial tubes and lung cells, and then—CONSUMPTION!

Why endure catarrh? We are preaching the gospel of CURE to you through these columns every day. To convince you that WE CURE CATARRH we will take your case, treat and CURE it for the nominal charge of FIVE DOLLARS PER MONTH.

RHEUMATISM

Insidious in its encroachments, disastrous in its effects, Rheumatism is a universal scourge, and if not quickly and properly diagnosed and eradicated soon renders helpless the most robust man or woman. In its train it carries a multitude of complications, and its baleful and destructive influence upon the human organism is too well known to justify graphic portrayal here. WE CURE RHEUMATISM!

Impondero-Therapy Company Merchants Trust Building, Fifth Floor, Sixth and Washington Sts., PORTLAND, OREGON. Office Hours: 10 A. M. to 5 P. M.; 7-8 P. M.; Sunday, 10-12 M. Phones: Main 7743; A 5755.

LEFFERTS LEFFERTS LEFFERTS LEFFERTS