



HALF-HOUR GARDENING FOR AMATEURS

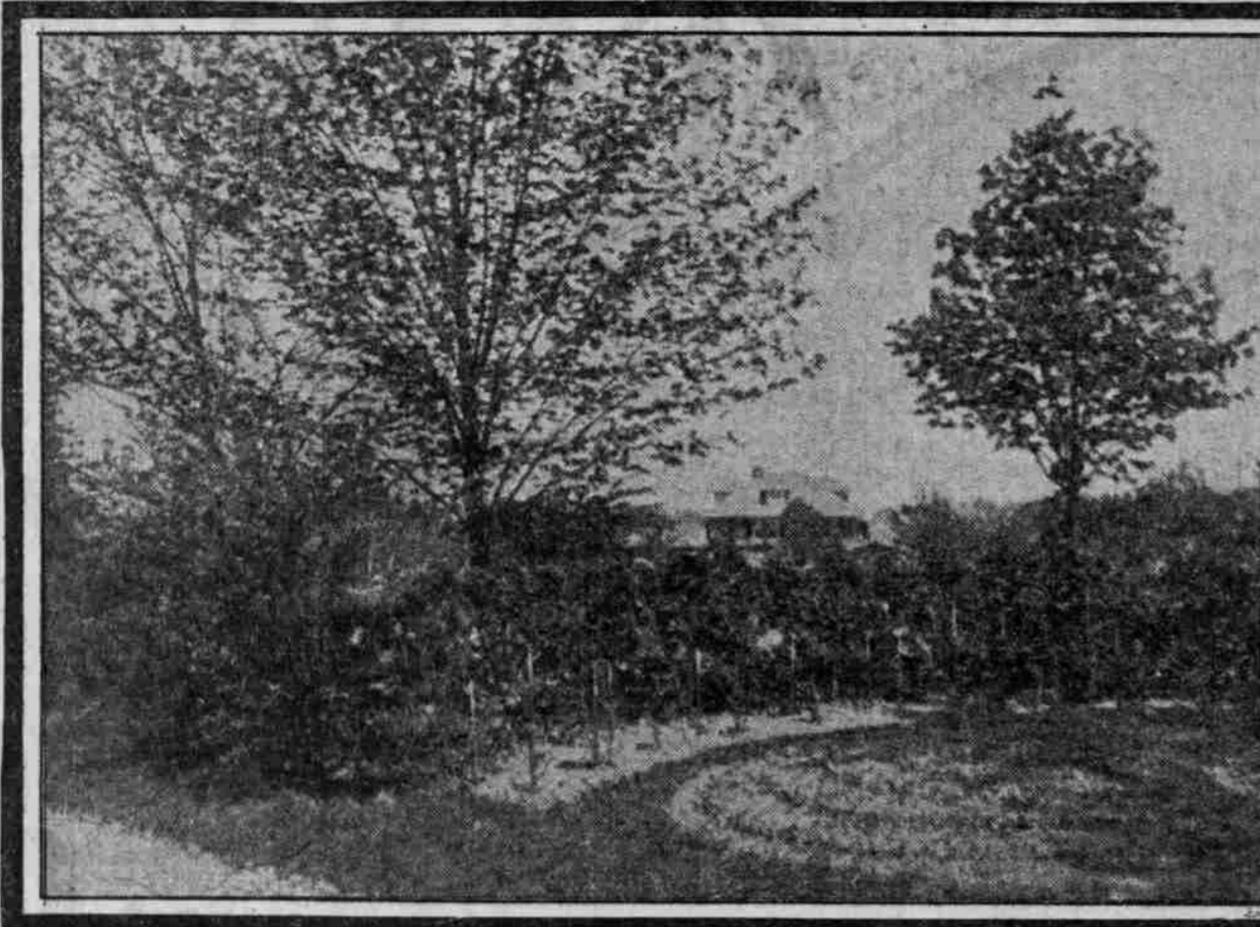
GENERAL DIRECTIONS BY AN EXPERIENCED MAN, APPLICABLE TO FLOWERS AND VEGETABLES



This is the first of a series of articles on gardening, especially intended for city dwellers and suburban residents, who have enough ground around their homes to cultivate flowers and raise vegetables.

While the information conveyed is reliable in character and based on scientific facts, it is presented in such popular form that a bright 12-year-old can comprehend. It is not intended for experienced gardeners, but for amateurs who, without these hints, would be driven to asking their neighbors for guidance.

This feature will run for several weeks in The Sunday Oregonian.



UTILIZING UNSIGHTLY PLACES

TRANSPLANTING TO THE OPEN

How to Move Pot-Grown Plants into the Outdoor Garden Beds.

NEVER transplant when the soil is wet. It is better to transplant on a bright day, when the earth is dry than on damp or wet days, despite the general belief among amateurs to the contrary. Dry soil will pack much better around the roots, and the roots need more hospitality than the upper bodies of the young growths.

Water the plants thoroughly the night before they are to be moved. When ready to transplant, make the holes in the garden with a trowel, which should be large enough to take all the roots without crowding, but no larger.

Then bring the plants out. As soon as a plant is out of the pot, set it in a hole, press the earth firmly, but very gently around it; pour water in, wait till it has partly disappeared and press more earth around it.

When all the plants are in, work the earth very fine and smooth around each one, taking care that the upper layer of the soil seems perfectly granulated and dry. If wet spots appear after all the plants are set cover them with a sprinkling of fine earth. This is the mulching that these tender things need to keep moisture about their roots instead of letting it escape to the upper surface of the ground. Do not make the mistake of covering the plant itself in any way to "protect" it. If the roots keep cool and damp, as the mulching should keep them, it is done systematically for some days until the plants show that they are thriving, the roots will take care of the rest of the plant.

FOR MOISTURE-LOVING PLANTS

How to Make Wild Spot That Shall Be Wet Glen in Miniature.

SOME of our most beautiful wild plants, such as the greatest of the native ferns, blue flags, cardinal flowers, trilliums, forget-me-nots, etc., will thrive only where they can get practically constant moisture. Every garden has some shady spots where they would find a desirable home. If the problem of water supply could be solved.

The average suburban gardener cannot afford to give plants a running supply from his arranged property, an old butter firkin, a small keg or any other similar receptacle. See that it is water-tight. Coat it with pitch, if necessary. With a very fine gimlet bore three or four extremely small holes near the bottom. Burn them with a red hot wire or nail so that the edges of the holes shall remain hard. Instead of swelling and closing up when water is put in.

Having placed this receptacle, pile flat slabs of rock upright against it till it is hidden completely. When it is filled with water, the liquid should trickle forth so slowly, though constantly, that the rocky will glisten all the time with moisture. If arranged properly, an ordinary bucket will not need refilling oftener than three or four times a week.

UNCOMMON, BUT GOOD VINES

A Form of Plant Growth in Which Much Variety is Wise.

WHILE too much variety is generally productive of an unsatisfactory effect in the case of flowers, shrubs and trees, unless the design is extra good, variety in vines is something much to be recommended. Whether a place is covered with one kind of vine or many, is a matter of the eye is the same. There

UTILIZING UNSIGHTLY PLACES

This picture shows a simple and cheap way to beautify an unsightly back end of a garden that has the further disadvantage of looking out on a flat, unattractive view. A small space is cleared away in front of the low, wild shrubbery, and in this are planted stakes on which woodbine and honeysuckle, both collected in the woods, are being trained, to form a green wall that will be especially happy in the Autumn when the wild shrubbery gets so very ragged and distressingly weedy. The round bed, roughly dug in the sod, is seeded down with nasturtiums. The amount of seed needed is less than 20 cents' worth.

Among the good, swiftly growing vines that are not generally known is the Japanese Akebia quinata. It is free from insect foes, grows very fast and has beautiful leaves that unfold early and stay late. It has spicy brownish flowers in early Spring and gets along very well with other vines.

For low verandas or trellises, there is a good vine known as the Chinese Matrimony vine (Lyodium Chinesae), which has bright purple flowers that are succeeded later in the season by brilliant scarlet berries. The Begonia Grandiflora, or trumpet creeper, has rich orange-scarlet trumpet-shaped flowers. If it is pinched back when it has gone as high as you wish it to grow, it forms a thick, shrub-like head.

One of the most prodigious growers of all is the Kuroki vine, a Japanese importation, which has the peculiar name of "Jack and the Beanstalk" on account of its swiftness of growth. Its foliage is large and lobed, and late in the season it bears pea-shaped purple flowers in clusters.

HOW TO RAISE RADISHES

One of Our Easy Crops for the Home Garden.

RADISHES come in early, medium and late varieties. The very early kind grows quickly, but becomes woody very soon. The medium and late-ripening varieties will hold their tender quality longer.

Do not seed in freshly manured ground. The great pest of the radish is the root maggot, which is most plentiful in such soil.

The soil should be fairly stiff, but it must not be as heavy as a clayey soil. It should be well tilled, although it need not be very deep, as from four to six inches of soil is enough for most kinds of radishes.

Make the drills at least 18 inches apart and when the first leaves come up, thin so that the plants stand about six inches apart. About three-fourths inch deep is the right depth for planting the seed.

The early ripening varieties can be sown down from now until the middle of June, making sowings every two weeks for succession. The medium or Summer varieties should be sown from about the middle of this month through July. If you want Winter radishes, sow that variety down in June.

Spring radishes must be picked as soon as they are of proper size as possible. The Summer varieties may stay in the ground a little longer after reaching table size than the Spring kind, as they will not get woody or pithy so soon. All radishes should, however, be picked soon after maturing.

OUTSIDE WINDOW BOXES.

Great Helps to Outdoor Gardens.

Complete Gardens Themselves.

OUTSIDE window and veranda boxes are not only beautiful little gardens in themselves when well kept, but many plants too tender to seed down with impunity in the garden beds, where they would be washed out by rains, may be started in the boxes amid the other plants that are to remain there.

Such boxes should be at least a foot wide and deep. The length, of course, will be as may be convenient. The boards must be well braced so that they will not warp apart and allow the water to run away.

Fuchsia, ferns, asparagus, sprengeri, ageratum, fancy leaved calceolarias and most of the tuberous-rooted begonias are beautiful for the window box. Begonias, however, will do best in a window box that faces the north.

For windows facing the street, bright flowers should be selected. Geraniums, heliotropes, coleus, cotons and similar flowers will answer best, particularly if there is plenty of bright sunlight to bring out their rich colors.

UTILIZING UNSIGHTLY PLACES

This picture shows a simple and cheap way to beautify an unsightly back end of a garden that has the further disadvantage of looking out on a flat, unattractive view. A small space is cleared away in front of the low, wild shrubbery, and in this are planted stakes on which woodbine and honeysuckle, both collected in the woods, are being trained, to form a green wall that will be especially happy in the Autumn when the wild shrubbery gets so very ragged and distressingly weedy. The round bed, roughly dug in the sod, is seeded down with nasturtiums. The amount of seed needed is less than 20 cents' worth.

Among the good, swiftly growing vines that are not generally known is the Japanese Akebia quinata. It is free from insect foes, grows very fast and has beautiful leaves that unfold early and stay late. It has spicy brownish flowers in early Spring and gets along very well with other vines.

For low verandas or trellises, there is a good vine known as the Chinese Matrimony vine (Lyodium Chinesae), which has bright purple flowers that are succeeded later in the season by brilliant scarlet berries. The Begonia Grandiflora, or trumpet creeper, has rich orange-scarlet trumpet-shaped flowers. If it is pinched back when it has gone as high as you wish it to grow, it forms a thick, shrub-like head.

One of the most prodigious growers of all is the Kuroki vine, a Japanese importation, which has the peculiar name of "Jack and the Beanstalk" on account of its swiftness of growth. Its foliage is large and lobed, and late in the season it bears pea-shaped purple flowers in clusters.

HOW TO RAISE RADISHES

One of Our Easy Crops for the Home Garden.

RADISHES come in early, medium and late varieties. The very early kind grows quickly, but becomes woody very soon. The medium and late-ripening varieties will hold their tender quality longer.

Do not seed in freshly manured ground. The great pest of the radish is the root maggot, which is most plentiful in such soil.

The soil should be fairly stiff, but it must not be as heavy as a clayey soil. It should be well tilled, although it need not be very deep, as from four to six inches of soil is enough for most kinds of radishes.

Make the drills at least 18 inches apart and when the first leaves come up, thin so that the plants stand about six inches apart. About three-fourths inch deep is the right depth for planting the seed.

The early ripening varieties can be sown down from now until the middle of June, making sowings every two weeks for succession. The medium or Summer varieties should be sown from about the middle of this month through July. If you want Winter radishes, sow that variety down in June.

Spring radishes must be picked as soon as they are of proper size as possible. The Summer varieties may stay in the ground a little longer after reaching table size than the Spring kind, as they will not get woody or pithy so soon. All radishes should, however, be picked soon after maturing.

OUTSIDE WINDOW BOXES.

Great Helps to Outdoor Gardens.

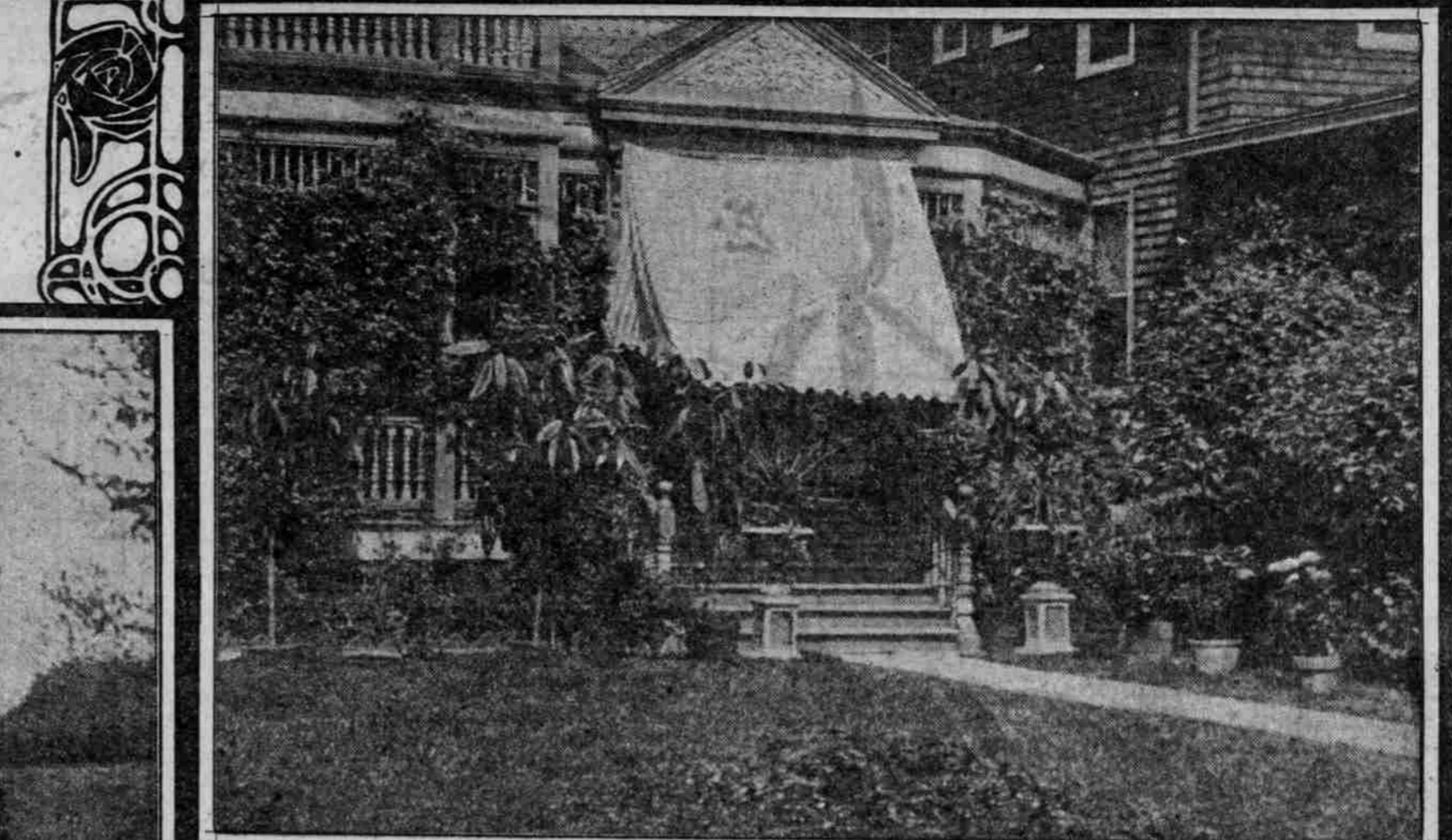
Complete Gardens Themselves.

OUTSIDE window and veranda boxes are not only beautiful little gardens in themselves when well kept, but many plants too tender to seed down with impunity in the garden beds, where they would be washed out by rains, may be started in the boxes amid the other plants that are to remain there.

Such boxes should be at least a foot wide and deep. The length, of course, will be as may be convenient. The boards must be well braced so that they will not warp apart and allow the water to run away.

Fuchsia, ferns, asparagus, sprengeri, ageratum, fancy leaved calceolarias and most of the tuberous-rooted begonias are beautiful for the window box. Begonias, however, will do best in a window box that faces the north.

For windows facing the street, bright flowers should be selected. Geraniums, heliotropes, coleus, cotons and similar flowers will answer best, particularly if there is plenty of bright sunlight to bring out their rich colors.



POTTED FOLIAGE AND FLOWERS FOR LAWNS

Parents come up in 10 to 20 days and are ready for the table in about 10 days. Turnips show first sprouts in 4 to 8 days and can be used in from 20 to 30 days, usually in slow in appearing, rarely showing its head above ground before the seed has been in 12 days, and often requiring 170 days to get ready for use.

ENDIVE TO FOLLOW LETTUCE

A Delicious Salad Plant, Only Beginning to Be Really Known.

ONE of the most delicious salad plants in the world is the endive. It is the French chichory and some day when it is thoroughly known in America it will largely supplant our more common lettuces.

There are two varieties—the curled and the broad-leaved. The former is the more tender. It matures slowly, requiring about seven weeks and can be sown so that it will come in during the heated months, when lettuce is at its poorest. Endive sown now and every two weeks for succession till June will give crops at just the right time.

Plant the seed fairly close, and as soon as a few leaves are up begin to thin, using the thinnings for the table. Continue this thinning daily till the plants that are to remain and grow to maturity are at least one foot apart.

As soon as the leaves are four inches tall, you may begin to pick. Or they may be cut off and the plant will grow others. Picked this way, endive is at its tenderest.

If it is allowed to grow into heads, the stalks should be blanched. This is done by excluding the light from them either by heaping straw or hay around the base of the plants, by covering with boards or most easily and best by tying the heads. Be careful, however, never to perform any of these operations at a time when there is a dew or rain on the plants.

It is important not to waste manure, for it is immensely valuable under-ground during the Summer and a dead loss to the garden if it is thrown away; but if it is under suspicion of having been a Winter cover, it should be used with care. Thus at least some of its fertilizing properties will be saved in the safe and sterile form of ash.

Among other things, the surplus manure of Winter, which should be quite dry by this time, will make a splendid fertilizer for garden, and it should be carted into a heap and burned at once. Thus at least some of its fertilizing properties will be saved in the safe and sterile form of ash.

If there are still some hardy plants to transplant, it can be done successfully providing great care is used. Dig the hole first that is to receive them and make the earth extra fine. Then lift the plant with all the earth around its roots that can possibly be kept, put burlap or similar material around it to hold it together while moving it, and transplant it. The moment the plant is settled in the ground, pour water on until the earth holds no more. Then make a little circular embankment of soil around it and fill with water up to its level. When this has soaked away, which should be a matter of some time, cover with grass cuttings or other loose litter for a mulch and water again plentifully every day thereafter till the plant shows unmistakably that it has taken hold.

This is the time to look out for cutworms. They operate just under the soil at the base of a stalk. If a plant shows a withering, drooping stalk and there is no apparent surface enemy, dig down about half an inch and you will probably find the pest. Surround the plants with powdered stove coal ashes.

WHEN WILL THEY COME?

How Long It Takes Common Vegetables to Grow.

RADISH plants will begin to show above the surface in from three to six days after planting. One month after that the early varieties are ready to eat. Later sorts mature as late as 45 days after sowing. Lettuce plants will show in six to ten days in very early, 50 days in medium and as late as 80 days in the very late sorts. Beans appear in five to ten days after sowing and are ready to eat in about 50 days. Cabbage seed germinates in a week or ten days and matures in 30 days. Cauliflower shows first leaves in about a week and is ripe for use in about 125 days. Corn appears in a week or eight days and is ready to eat in from 85 to 90 days. Onions require a week or ten days to germinate and it takes 100 days for the early and as much as 160 days for the late varieties to mature.

POTTED FOLIAGE AND FLOWERS FOR LAWNS

A Garden that has failed, or one that has been neglected too long to make it possible to get the requisite amount of bloom and foliage from planted things, can be made artificial, so to speak, by the lavish use of large plants in pots and tubs, as shown here. The assortment is miscellaneous, and not artistic from a gardener's point of view, but as an expedient in necessity it serves its purpose excellently well. Potted plants, such as hydrangeas, cactus, palms, yucca, little cedars and other beautiful evergreens, and scores of varieties of flowers, can be obtained so cheaply that it should not be difficult to brighten up the surroundings of a house at any time of the Summer.

The ground was dry. Now-a-days we know that watering hard, baked earth is always useless and sometimes worse than that. When the earth cakes, it is a sign that it has sucked up all the moisture from below and has allowed it to evaporate. What it needs immediately is to be dug, hoed or raked and made as fine as dust. Very often, if it is impossible to give a garden sufficient water, when the leaves are a sprinkling of the house or too large to soak as it should be soaked, you can refresh the plants without water by loosening all the soil around them and making it perfectly granulated and soft.

The writer had one experimental vegetable patch last Summer in a meadow so far from the house that it was quite impossible to water it. There was a drouth of three weeks and by merely raking the entire place every day the moisture already in the ground was conserved so perfectly that not a single plant so much as wilted.

As soon as the earth has been loosened, the sprinkling pot is absolutely out of place in a garden. It is useful for potted plants, but for nothing else. Soak the ground with a hose, or set water on it in pailfuls. Immediately following the watering, cover with a mulch.

What is a mulch? Anything that will cover the ground loosely and yet thoroughly. The most desirable for gardens is lawn-mower cuttings from the lawn, they are perfectly consistent, they can be cut or chopped straw, very dry manure, dry leaves, and similar vegetable matter will answer perfectly.

Whenever the soil around any plant, whether it be flower, shrub or vegetable, is hard and caked, it is a sure symptom that your treatment of the garden is wrong. The average amateur will try to correct the matter at once by watering; indeed, that is all that most gardeners used to do when

BEGIN TO DO MULCHING NOW

From This Time On Plants Will Need Moisture.

WHENEVER the soil around any plant, whether it be flower, shrub or vegetable, is hard and caked, it is a sure symptom that your treatment of the garden is wrong. The average amateur will try to correct the matter at once by watering; indeed, that is all that most gardeners used to do when

Whenever the soil around any plant, whether it be flower, shrub or vegetable, is hard and caked, it is a sure symptom that your treatment of the garden is wrong. The average amateur will try to correct the matter at once by watering; indeed, that is all that most gardeners used to do when

FROM THIS TIME ON PLANTS WILL NEED MOISTURE.

WHENEVER the soil around any plant, whether it be flower, shrub or vegetable, is hard and caked, it is a sure symptom that your treatment of the garden is wrong. The average amateur will try to correct the matter at once by watering; indeed, that is all that most gardeners used to do when

Whenever the soil around any plant, whether it be flower, shrub or vegetable, is hard and caked, it is a sure symptom that your treatment of the garden is wrong. The average amateur will try to correct the matter at once by watering; indeed, that is all that most gardeners used to do when

FROG FARMING PAYING PROPOSITION

California Girl Who Makes \$1800 a Year Out of Her Ranch.

ONE OF the most successful frog ranches in California is owned and managed by Miss Katherine Walsh. Like a good many other people now living in the West, Miss Walsh was forced to leave her native state in the East because of ill health. Being told to live out of doors and forced by necessity to earn her own living, she decided to raise frogs for the market, and now not only owns one of the most picturesque ranches in Contra Costa County but supports in comfort her mother and the two children of a dead sister.

"The net profit of my froggeries for last year was something over \$1800," Miss Walsh told the reporter. "I sold 200 dozen frog legs in San Francisco and that was the amount cleared. They were all shipped alive to hotels and restaurants in the native frog is crossed with the large Eastern frog. According to epicures the very best frog for the table is the cross between the California and the Florida species. With carefully selected stock this cross produces exceptionally handsome frogs and so deliciously flavored as to put to blush the finest Parisian product."

"My froggeries cover ten acres of land and are four in number, besides the small ponds where the tadpoles are kept until they are large enough to be put with their elder relatives. Yes, it is absolutely necessary to keep them divided according to size, as frogs are about the most cheerful cannibals one could imagine."

"Anything of his own kind from a tadpole up is fair game for a large frog that can catch and swallow it. They are not at all particular about being able to swallow it at one gulp either. Indeed they are perfectly consistent in their object is to prevent the heat of the sun or atmosphere from reaching the digestive fluids, to sit placidly with a part hanging out of their mouth until room has been made for it inside."

"In spite of every precaution the large frogs will sometimes get out. When they do it seems that instinct leads them directly to the tadpole ponds. In the morning the runaway frog is found wearing a placid smile of contentment, unmistakable evidence that a sufficiency of tadpoles have been stored away by him."

"I now have all my ponds and pools surrounded by close board fences three feet in height. No, the frogs cannot jump so high, but if by chance a broom, a garden utensil or even a broken branch is left leaning against the fence the frog seems to discover it in some miraculous manner, and at once, using it as a gangplank, set out to see the world."

"They are great travelers by nature, and soon after moving my stock to this place I had an amusing experience. As it was not possible to have banks built, but when I bought this ranch, as all the ponds had high banks, I thought there would be no necessity for the fences."

"A few days after we moved in I was awakened early one morning by the gardener and invited to come out and look at the frogs. It seemed as if the whole place was covered with them. They had climbed the banks and were off on their travels. We were kept busy the entire morning sweeping them up with brooms and dust-pans and dumping them back into the ponds where they belonged."

POTTED FOLIAGE AND FLOWERS FOR LAWNS

A Garden that has failed, or one that has been neglected too long to make it possible to get the requisite amount of bloom and foliage from planted things, can be made artificial, so to speak, by the lavish use of large plants in pots and tubs, as shown here. The assortment is miscellaneous, and not artistic from a gardener's point of view, but as an expedient in necessity it serves its purpose excellently well. Potted plants, such as hydrangeas, cactus, palms, yucca, little cedars and other beautiful evergreens, and scores of varieties of flowers, can be obtained so cheaply that it should not be difficult to brighten up the surroundings of a house at any time of the Summer.

The ground was dry. Now-a-days we know that watering hard, baked earth is always useless and sometimes worse than that. When the earth cakes, it is a sign that it has sucked up all the moisture from below and has allowed it to evaporate. What it needs immediately is to be dug, hoed or raked and made as fine as dust. Very often, if it is impossible to give a garden sufficient water, when the leaves are a sprinkling of the house or too large to soak as it should be soaked, you can refresh the plants without water by loosening all the soil around them and making it perfectly granulated and soft.

The writer had one experimental vegetable patch last Summer in a meadow so far from the house that it was quite impossible to water it. There was a drouth of three weeks and by merely raking the entire place every day the moisture already in the ground was conserved so perfectly that not a single plant so much as wilted.

As soon as the earth has been loosened, the sprinkling pot is absolutely out of place in a garden. It is useful for potted plants, but for nothing else. Soak the ground with a hose, or set water on it in pailfuls. Immediately following the watering, cover with a mulch.

What is a mulch? Anything that will cover the ground loosely and yet thoroughly. The most desirable for gardens is lawn-mower cuttings from the lawn, they are perfectly consistent, they can be cut or chopped straw, very dry manure, dry leaves, and similar vegetable matter will answer perfectly.

Whenever the soil around any plant, whether it be flower, shrub or vegetable, is hard and caked, it is a sure symptom that your treatment of the garden is wrong. The average amateur will try to correct the matter at once by watering; indeed, that is all that most gardeners used to do when

BEGIN TO DO MULCHING NOW

From This Time On Plants Will Need Moisture.

WHENEVER the soil around any plant, whether it be flower, shrub or vegetable, is hard and caked, it is a sure symptom that your treatment of the garden is wrong. The average amateur will try to correct the matter at once by watering; indeed, that is all that most gardeners used to do when

Whenever the soil around any plant, whether it be flower, shrub or vegetable, is hard and caked, it is a sure symptom that your treatment of the garden is wrong. The average amateur will try to correct the matter at once by watering; indeed, that is all that most gardeners used to do when

FROM THIS TIME ON PLANTS WILL NEED MOISTURE.

WHENEVER the soil around any plant, whether it be flower, shrub or vegetable, is hard and caked, it is a sure symptom that your treatment of the garden is wrong. The average amateur will try to correct the matter at once by watering; indeed, that is all that most gardeners used to do when

Whenever the soil around any plant, whether it be flower, shrub or vegetable, is hard and caked, it is a sure symptom that your treatment of the garden is wrong. The average amateur will try to correct the matter at once by watering; indeed, that is all that most gardeners used to do when

FROG FARMING PAYING PROPOSITION

California Girl Who Makes \$1800 a Year Out of Her Ranch.

ONE OF the most successful frog ranches in California is owned and managed by Miss Katherine Walsh. Like a good many other people now living in the West, Miss Walsh was forced to leave her native state in the East because of ill health. Being told to live out of doors and forced by necessity to earn her own living, she decided to raise frogs for the market, and now not only owns one of the most picturesque ranches in Contra Costa County but supports in comfort her mother and the two children of a dead sister.

"The net profit of my froggeries for last year was something over \$1800," Miss Walsh told the reporter. "I sold 200 dozen frog legs in San Francisco and that was the amount cleared. They were all shipped alive to hotels and restaurants in the native frog is crossed with the large Eastern frog. According to epicures the very best frog for the table is the cross between the California and the Florida species. With carefully selected stock this cross produces exceptionally handsome frogs and so deliciously flavored as to put to blush the finest Parisian product."

"My froggeries cover ten acres of land and are four in number, besides the small ponds where the tadpoles are kept until they are large enough to be put with their elder relatives. Yes, it is absolutely necessary to keep them divided according to size, as frogs are about the most cheerful cannibals one could imagine."

"Anything of his own kind from a tadpole up is fair game for a large frog that can catch and swallow it. They are not at all particular about being able to swallow it at one gulp either. Indeed they are perfectly consistent in their object is to prevent the heat of the sun or atmosphere from reaching the digestive fluids, to sit placidly with a part hanging out of their mouth until room has been made for it inside."

"In spite of every precaution the large frogs will sometimes get out. When they do it seems that instinct leads them directly to the tadpole ponds. In the morning the runaway frog is found wearing a placid smile of contentment, unmistakable evidence that a sufficiency of tadpoles have been stored away by him."

"I now have all my ponds and pools surrounded by close board fences three feet in height. No, the frogs cannot jump so high, but if by chance a broom, a garden utensil or even a broken branch is left leaning against the fence the frog seems to discover it in some miraculous manner, and at once, using it as a gangplank, set out to see the world."

"They are great travelers by nature, and soon after moving my stock to this place I had an amusing experience. As it was not possible to have banks built, but when I bought this ranch, as all the ponds had high banks, I thought there would be no necessity for the fences."

"A few days after we moved in I was awakened early one morning by the gardener and invited to come out and look at the frogs. It seemed as if the whole place was covered with them. They had climbed the banks and were off on their travels. We were kept busy the entire morning sweeping them up with brooms and dust-pans and dumping them back into the ponds where they belonged."

served the purpose, but of course only as desperate expedients.

PLANTING OF FLOWER SEEDS

Simple Directions to Amateurs for the Preparation of the Soil.

IN making the garden bed for outdoor sowing of seed, the amateur can save much time and trouble by understanding clearly just what the principle is.

In the first place, remember that almost all the seeds of our common garden subterranean caves, where they are never covered properly nor will they get nourishment. The earth into which they go should be so fine that so much of crumpling between the fingers will make it any finer. If it can be sieved, that is the best thing to do.

Even while the seeds need perfectly powdered earth to do their best, they do not need much of it. A few inches in depth is all that indoor seed boxes ever have. Consequently it is by no means necessary to dig down over the whole garden bed to make it a good seed bed.

On the other hand, however, as the flowers that come up arc to stay where they grow, it is extremely necessary that the entire bed be prepared as it should be to provide the proper nourishment and foothold for the plants after their roots begin to go deeper than the upper seedbed.

Therefore the right way to go about making a bed for seeding, down flowers is to remove about half a foot or even a little less of the top soil if it is very rich and black earth. If not, get an equal quantity of earth that is good, pass through a fine sieve if possible, or else rake it and pick it over till it is perfectly fine. Pile it alongside of the bed. Then go at the latter. Dig it deep, mixing the upper soil well with the lower. Unless the earth is very rich indeed, put some fine well-rotted manure in and turn it over. Rake it all thoroughly, removing all large stones and hard material, and everything that will prevent the earth from forming a good root bed.

After the bed has been thoroughly raked and smoothed, tramp it down so that it is packed solid. Then rake again thoroughly, because while you want the earth to be well packed, as rain and weather would pack it in time, you still do not want it hard and solid.

After this second raking, cover evenly with the very fine earth for the reception of the seeds. Most of the flower seeds will not need to be dug under. It will be best to scatter them lightly on the ground and then press them in firmly with a flat board. Scatter the earth, crumbled between the fingers, over them and the work is done.

After this second raking, cover evenly with the very fine earth for the reception of the seeds. Most of the flower seeds will not need to be dug under. It will be best to scatter them lightly on the ground and then press them in firmly with a flat board. Scatter the earth, crumbled between the fingers, over them and the work is done.

After this second raking, cover evenly with the very fine earth for the reception of the seeds. Most of the flower seeds will not need to be dug under. It will be best to scatter them lightly on the ground and then press them in firmly with a flat board. Scatter the earth, crumbled between the fingers, over them and the work is done.

After this second raking, cover evenly with the very fine earth for the reception of the seeds. Most of the flower seeds will not need to be dug under. It will be best to scatter them lightly on the ground and then