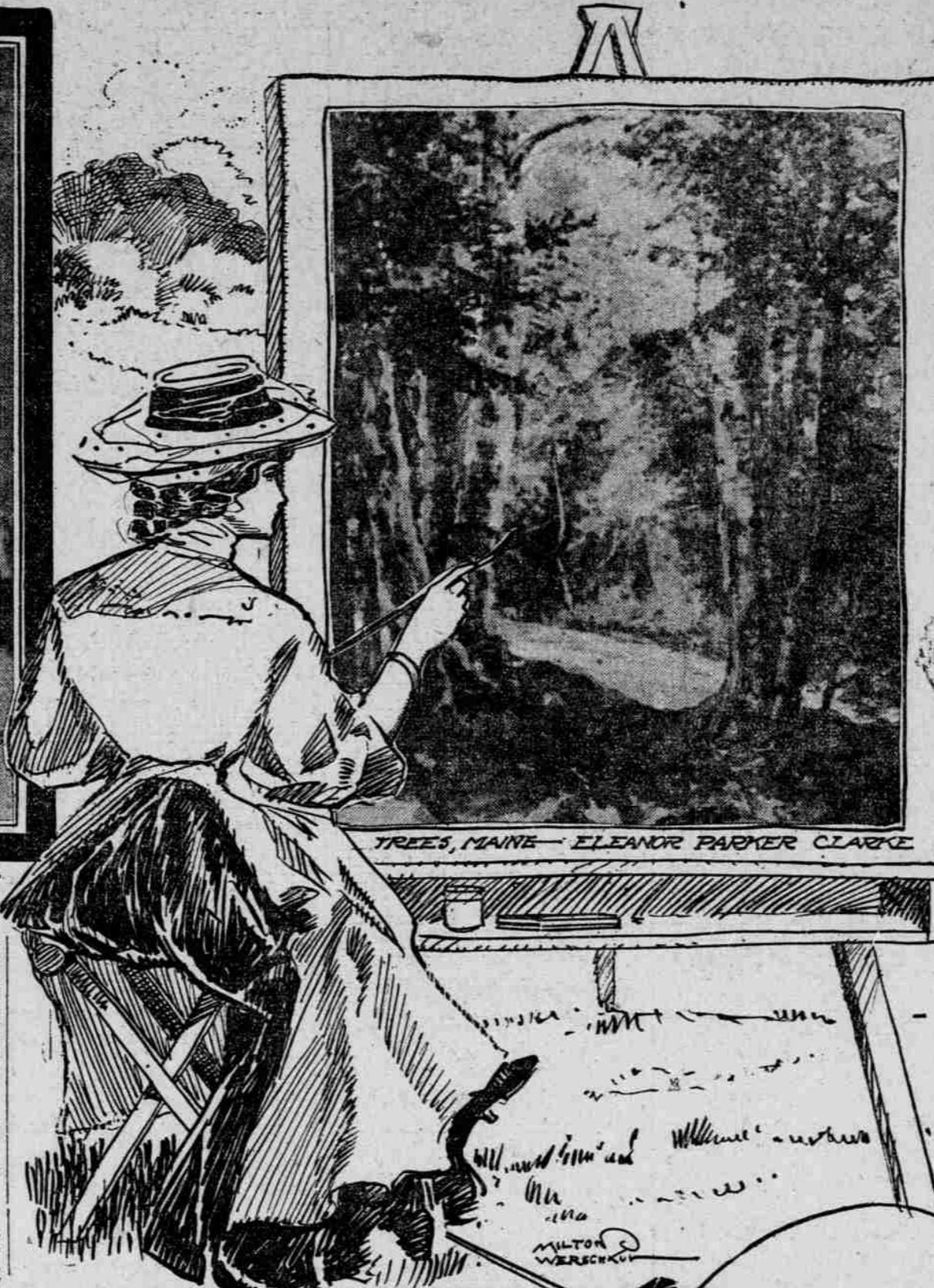


# Art Students' League Exhibits Collection of Drawings and Paintings



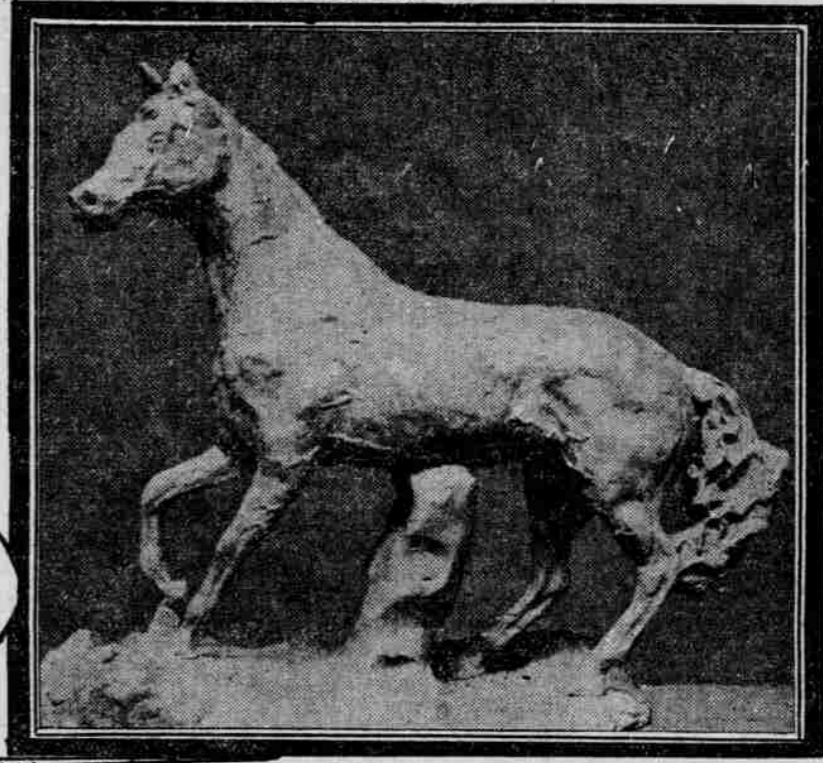
PORTRAIT STUDY, OIL  
GEORGINA BURNS



TREES, MAINE—ELEANOR PARKER CLARKE



PORTRAIT STUDY  
EDNA C. BREYMAN



MODEL OF HORSE  
ROSWELL HOLT DOSCH



LENT BY MRS. W. J. BURNS  
SKETCH BY F. V. DUMOND



THE BLOUGH  
H. C. WILSON



CHARCOAL SKETCH, A. B. CROCKER



MODEL OF  
BOY'S HEAD  
MRS. L. B.  
LINTICUM

**A** CREDITABLE and interesting collection of drawings and paintings by the Oregon Art Students' League is now on exhibition at the Museum of Art which is receiving much comment, as the work shows effort in the right direction and earnestness on the part of the students. Four classes a week are given at the Museum, one on Monday evenings when charcoal drawing is taught by Miss Burns, who also has a class on Wednesday mornings in portrait painting. On Wednesday evenings a class in clay modeling is under the direction of H. F. Wentz and a Tuesday afternoon class in designing is taught by Miss Roma C. McKnight.

The list of exhibitors includes Miss Helen D. Barber, Miss Lillian F. Bain, Miss Edna C. Breyman, George E. Brigham, Miss Georgina Burns, Miss Eleanor Parker Clarke, Miss Roma C. McKnight, A. B. Crocker, Roswell Holt Dosch, Miss Dorothy Gilbert, A. S. Doyle, Elva Humason, Miss Bessie Morse, Miss Edna Murphy, Mrs. E. G. Stowell, Miss Leslie M. Smith, Mrs. S. R. Linticum, H. F. Wentz, Dr. H. C. Wilson, and several sketches by former instructors of the league, namely, H. M. Walcott and F. V. Dumond.

The work of Miss Georgina Burns shows depth and richness of color, breadth of treatment and animated character.

A striking piece of work is shown by A. B. Crocker, a portrait of a child, which is strong, shows excellent drawing and a pleasing sense of color. Eleanor Parker Clarke's three-tone compositions attract much favorable comment. A. B. Doyle's Venetian scenes show beautiful draughtsmanship, as does the work of Dr. H. C. Wilson, his six sketches showing feeling and excellent technique.

A night scene in Paris, lent by I. N. Fieschner, is one of the gems of the collection, and is a charming study in light effects.

H. F. Wentz' collection shows individuality, atmospheric quality and an element of sympathetic sentiment. F. V. Dumond, one of the ablest instructors in America, is represented by two paintings, lent by Vera Snow and W. J. Burns. One in particular is a charming piece of color of Autumnal tints, painted at Lynn, Conn.

membership has been increased to 42. The young women and their teacher, Mrs. Ordeman, are very enthusiastic in obtaining new members and are greatly encouraged with the success they are having. A hearty welcome is assured every young woman who wishes to become a member or a visitor of the class, which meets every Sunday at 11:45 A. M., at Immanuel Baptist Church, corner Second and Mead streets.

### SIGNS MUST COME DOWN

Only Those Lighted All Night May Remain.

Hundreds of street signs that do not comply with the ordinances are to be torn down by City Engineer Taylor, under instructions of the Council. They

are electric display signs, which are required to be lighted all night, but it is said by Mr. Taylor, in a report to the streets committee of the Council, that there is very general violation of the law. The matter is practically in his own hands, however, as he has been given authority to grant or to refuse permits for signs, as he sees fit.

Mr. Taylor has reported to the committee that more than half of the holders of permits for electric signs violate the ordinance which requires the signs to be lighted all night, and declares himself as unfavorable to the granting of any permits for other than signs that are lighted on both sides all night. His opinion in the matter is being backed up by the committee, and it is certain that no more permits will be granted and that many now out will be revoked. The committee first began granting the permits in the hope that the electric signs would help to light the streets, but thus far the theory has not worked out well.

### FEAR AMERICAN INVASION

Canadians Ask Tariff Protection by Government.

LONDON, Jan. 18.—(Special).—According to advices received here, the Canadian Manufacturers' Association has taken another step towards protection. The manufacturers, as is well known, are not satisfied with the revision adopted by the tariff commission, and they have now requested the imperial government to appoint a permanent tariff commission with powers to adjust the customs tariff from time to time, just as the railway commission adjusts rates and fares on the railways. The manufacturers propose that they should be allowed to attach an expert to the tariff commission, but the government does not favor this idea.

The point raised by the Canadian manufacturers is that the tariff is not high enough for the needs of Dominion industries. They maintain that their insistence on this point for the last few years has been not because of actual loss, so far from foreign competition, but to

provide against the serious injury to Canadian manufacturers that they expected when a reaction of trade should occur. That reaction has now begun, and they

assert that the Dominion will be over-run with American products, to the destruction of Canadian industry. Canadian industries, however, with

rare exception, appear to be flourishing remarkably well. Still, there seems to be no doubt that American manufacturers are increasing their ventures in Canada,

and American traders are pushing further than the Canadian producers can tolerate. So a new and urgent circular has been issued by the Canadian Manufactur-

ers' Association pointing out the extent and effect of the American invasion. It is believed that the government will consent to the creation of the tariff commission, though not to the representation of the Manufacturers' Association upon it.

### IMPROVE EAST MORRISON

Fill May Prevent Laying of Hard Surface Pavement.

A first-class pavement for East Morrison street, between East Water and Grand avenue, is being considered, and City Engineer Taylor is soon to make a personal investigation of the district, to ascertain what kind of an improvement is most advisable. Councilman Kellaher is the prime mover in the proposed work, and he firmly believes that a fine hard-surface pavement should be put down.

Mr. Taylor is doubtful as to the advisability of a hard-surface pavement for the street at this time, owing to the fill that was recently made there. He has some fear that the embankment is insufficiently strong to support it and that to lay a costly pavement would prove too expensive. It is agreed that the street should be improved, and Mr. Kellaher declares that all of the property-owners there are highly in favor of a first-class pavement.

KISER CALENDARS 10c UP. Halprice while last. 248 Alder.

### OPPOSES SCULLIN SCHEME

Trades Council Withdraws From Industrial Peace Association.

By unanimous vote the Federated Trades Council at its meeting Friday night withdrew its delegates from the Portland branch of the National Industrial Peace Association. In explanation of this action, the officers of the Council wish it understood that organized labor of Portland is not opposed to the amicable settlement, by arbitration or otherwise, of all disputes between employer and employee. But the labor unions were not admirers of the organization when it was formed in this city about a year ago by F. H. Scullin.

"Since this peace association was formed, there has been a number of labor troubles in this city," said one of the officers of the Trades Council yesterday, "and this agency did not prove of any assistance in effecting a settlement. In one instance, workmen have been laid off without any good reason and their places have been filled by imported laborers. It is not alone because this association failed to venture its services that we have withdrawn our delegates, but we have serious doubts of results ever being accomplished through a society that is founded largely on sentiment and directed by a man with whose devotion to the interests of the working men we have never been fully satisfied."

The delegates from the Federated Trades Council to the Peace Association were: W. H. Fitzgerald, Ed Thayer, C. H. Kelly, Pauline McDonald, Harry Gurr and William Mackenzie. Mr. McDonald was one of the representatives from the labor organizations on the board of directors.

### Philathea Church Society Meets.

The Philathea of Immanuel Baptist Church held their monthly business meeting in the classroom at the church Monday evening, January 13. Several important motions were made and carried, among which was the adoption of an information box through which the members could make inquiries and get helpful information from each other. Also preparations were made for a banquet to be given in the near future to the young men of the Barack class. They also chose their class colors—cardinal and old gold. Since the class was organized, in the latter part of October, 1907, with four charter members, the