

IRVING APARTMENT HOUSE IRVING ST. BETWEEN 21ST AND 22ND.

WEEKLY REVIEW OF REAL ESTATE

Demand for Dwelling-Houses Keeps in Advance of Building Operations.

GARDEN TRACTS ASKED FOR

Fruit Industry of Oregon Attracts Attention of Farmers in Other States and Inquiries Come Every Mail for Lands.

ATTRACTIVE RESIDENCE OF

WALTER COOK, E. 18TH AND TILLAMOOK. BENNER, HENDRICKS AND TOBEY ARCHITECTS.

START ERECTION OF BIG LAUNDRY

East Side Secures Three-Story Plant to Occupy Lot 50 by 200 Feet.

STOP WHITE SLAVE TRADE

Jewish Order of B'nai B'rith Will Head Crusade.

FIRM CHOOSES PORTLAND

Big Fill Along 21 Blocks Begins Soon, Which Will Extend Warehouse District Over Great Area in Central Location.

HELP OUT THE RED CROSS

Campaign to Be Inaugurated for Increase in Membership.

MAY ERECT TANNERY

It is announced that plans are being drawn for a large tannery, probably to be erected on the peninsula near the plant of the Swift Packing Company.

TRANSFER ST. JOHN HOTEL

GOOD MOVEMENT OF PENINSULA PROPERTY. Gas Light Plant Costing \$40,000 Will Be Erected Soon After Plans Are Ready.

LOTS BRING \$11,000

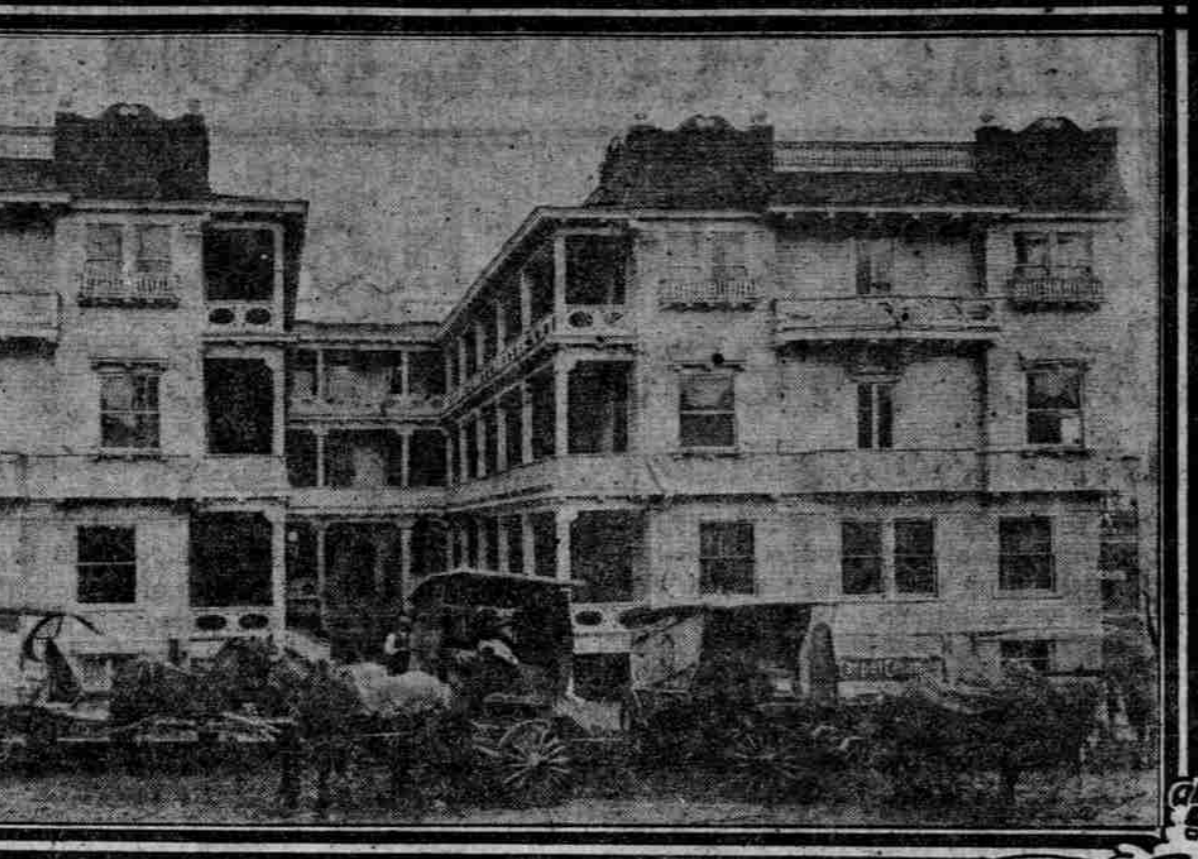
The largest single sale of residence property was made in Piedmont, Albert Paul sold to Caroline Fuqua four lots at the corner of Pearl street and Williams avenue for \$11,000.

WILL BUILD AT ROSE CITY PARK

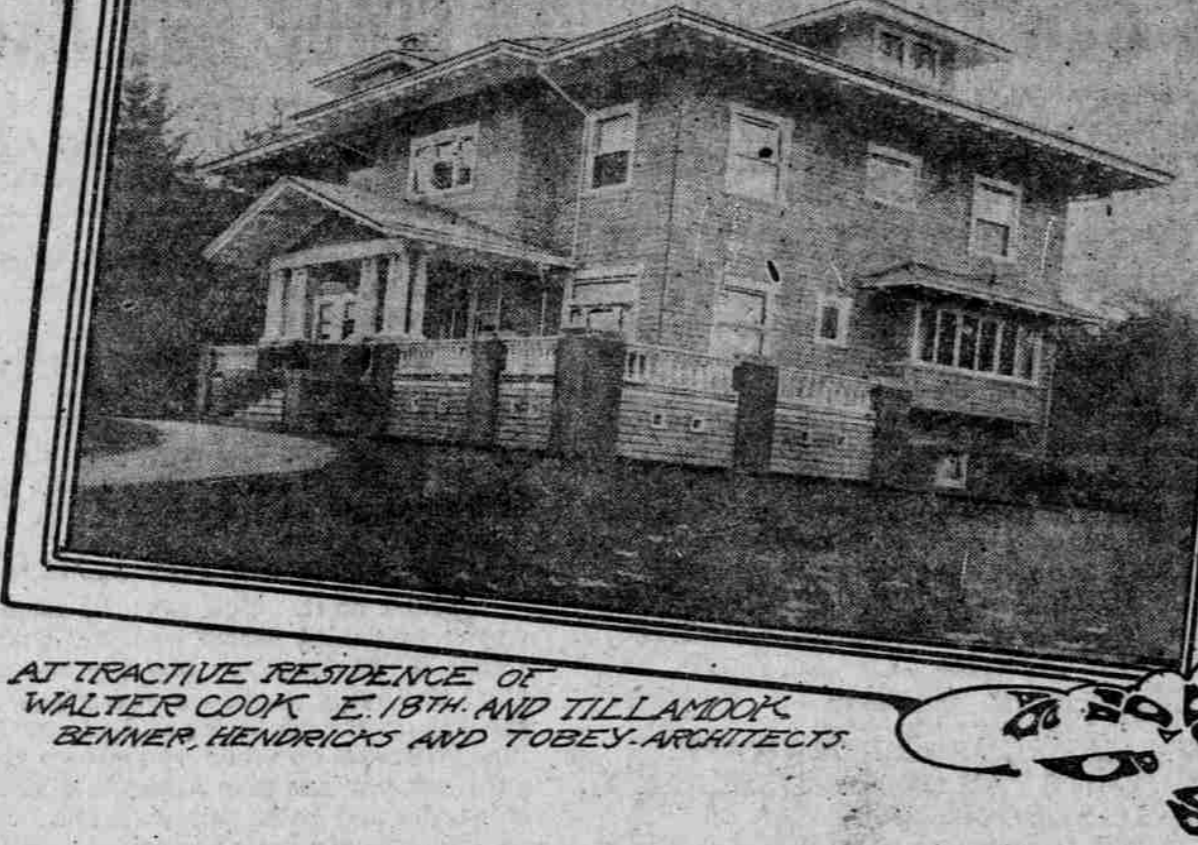
The special committee appointed by the Rose City Park Improvement League has received 42 answers to the letters sent out to property-owners, asking them if they will not join a concerted building movement in that suburb.

SEATTLE RATE WAR

LONDON, Jan. 18.—Shipping men have predicted that an attempt will be made next week to settle the trans-Atlantic rate war by a conference in this city of representatives of the principal steamship companies.



WEBB FLATS EAST MORRISON BET 16TH AND 17TH



RESIDENCE OF MRS. HELEN P. CARDWELL IRVING ST. BETWEEN 20TH AND 21ST

START ERECTION OF BIG LAUNDRY

East Side Secures Three-Story Plant to Occupy Lot 50 by 200 Feet.

STOP WHITE SLAVE TRADE

Jewish Order of B'nai B'rith Will Head Crusade.

FIRM CHOOSES PORTLAND

Big Fill Along 21 Blocks Begins Soon, Which Will Extend Warehouse District Over Great Area in Central Location.

HELP OUT THE RED CROSS

Campaign to Be Inaugurated for Increase in Membership.

MAY ERECT TANNERY

It is announced that plans are being drawn for a large tannery, probably to be erected on the peninsula near the plant of the Swift Packing Company.

TRANSFER ST. JOHN HOTEL

GOOD MOVEMENT OF PENINSULA PROPERTY. Gas Light Plant Costing \$40,000 Will Be Erected Soon After Plans Are Ready.

LOTS BRING \$11,000

The largest single sale of residence property was made in Piedmont, Albert Paul sold to Caroline Fuqua four lots at the corner of Pearl street and Williams avenue for \$11,000.

WILL BUILD AT ROSE CITY PARK

The special committee appointed by the Rose City Park Improvement League has received 42 answers to the letters sent out to property-owners, asking them if they will not join a concerted building movement in that suburb.

SEATTLE RATE WAR

LONDON, Jan. 18.—Shipping men have predicted that an attempt will be made next week to settle the trans-Atlantic rate war by a conference in this city of representatives of the principal steamship companies.

START ERECTION OF BIG LAUNDRY

East Side Secures Three-Story Plant to Occupy Lot 50 by 200 Feet.

STOP WHITE SLAVE TRADE

Jewish Order of B'nai B'rith Will Head Crusade.

FIRM CHOOSES PORTLAND

Big Fill Along 21 Blocks Begins Soon, Which Will Extend Warehouse District Over Great Area in Central Location.

HELP OUT THE RED CROSS

Campaign to Be Inaugurated for Increase in Membership.

MAY ERECT TANNERY

It is announced that plans are being drawn for a large tannery, probably to be erected on the peninsula near the plant of the Swift Packing Company.

TRANSFER ST. JOHN HOTEL

GOOD MOVEMENT OF PENINSULA PROPERTY. Gas Light Plant Costing \$40,000 Will Be Erected Soon After Plans Are Ready.

LOTS BRING \$11,000

The largest single sale of residence property was made in Piedmont, Albert Paul sold to Caroline Fuqua four lots at the corner of Pearl street and Williams avenue for \$11,000.

WILL BUILD AT ROSE CITY PARK

The special committee appointed by the Rose City Park Improvement League has received 42 answers to the letters sent out to property-owners, asking them if they will not join a concerted building movement in that suburb.

SEATTLE RATE WAR

LONDON, Jan. 18.—Shipping men have predicted that an attempt will be made next week to settle the trans-Atlantic rate war by a conference in this city of representatives of the principal steamship companies.

START ERECTION OF BIG LAUNDRY

East Side Secures Three-Story Plant to Occupy Lot 50 by 200 Feet.

STOP WHITE SLAVE TRADE

Jewish Order of B'nai B'rith Will Head Crusade.

FIRM CHOOSES PORTLAND

Big Fill Along 21 Blocks Begins Soon, Which Will Extend Warehouse District Over Great Area in Central Location.

HELP OUT THE RED CROSS

Campaign to Be Inaugurated for Increase in Membership.

MAY ERECT TANNERY

It is announced that plans are being drawn for a large tannery, probably to be erected on the peninsula near the plant of the Swift Packing Company.

TRANSFER ST. JOHN HOTEL

GOOD MOVEMENT OF PENINSULA PROPERTY. Gas Light Plant Costing \$40,000 Will Be Erected Soon After Plans Are Ready.

LOTS BRING \$11,000

The largest single sale of residence property was made in Piedmont, Albert Paul sold to Caroline Fuqua four lots at the corner of Pearl street and Williams avenue for \$11,000.

WILL BUILD AT ROSE CITY PARK

The special committee appointed by the Rose City Park Improvement League has received 42 answers to the letters sent out to property-owners, asking them if they will not join a concerted building movement in that suburb.

SEATTLE RATE WAR

LONDON, Jan. 18.—Shipping men have predicted that an attempt will be made next week to settle the trans-Atlantic rate war by a conference in this city of representatives of the principal steamship companies.

START ERECTION OF BIG LAUNDRY

East Side Secures Three-Story Plant to Occupy Lot 50 by 200 Feet.

STOP WHITE SLAVE TRADE

Jewish Order of B'nai B'rith Will Head Crusade.

FIRM CHOOSES PORTLAND

Big Fill Along 21 Blocks Begins Soon, Which Will Extend Warehouse District Over Great Area in Central Location.

HELP OUT THE RED CROSS

Campaign to Be Inaugurated for Increase in Membership.

MAY ERECT TANNERY

It is announced that plans are being drawn for a large tannery, probably to be erected on the peninsula near the plant of the Swift Packing Company.

TRANSFER ST. JOHN HOTEL

GOOD MOVEMENT OF PENINSULA PROPERTY. Gas Light Plant Costing \$40,000 Will Be Erected Soon After Plans Are Ready.

LOTS BRING \$11,000

The largest single sale of residence property was made in Piedmont, Albert Paul sold to Caroline Fuqua four lots at the corner of Pearl street and Williams avenue for \$11,000.

WILL BUILD AT ROSE CITY PARK

The special committee appointed by the Rose City Park Improvement League has received 42 answers to the letters sent out to property-owners, asking them if they will not join a concerted building movement in that suburb.

SEATTLE RATE WAR

LONDON, Jan. 18.—Shipping men have predicted that an attempt will be made next week to settle the trans-Atlantic rate war by a conference in this city of representatives of the principal steamship companies.

START ERECTION OF BIG LAUNDRY

East Side Secures Three-Story Plant to Occupy Lot 50 by 200 Feet.

STOP WHITE SLAVE TRADE

Jewish Order of B'nai B'rith Will Head Crusade.

FIRM CHOOSES PORTLAND

Big Fill Along 21 Blocks Begins Soon, Which Will Extend Warehouse District Over Great Area in Central Location.

HELP OUT THE RED CROSS

Campaign to Be Inaugurated for Increase in Membership.

MAY ERECT TANNERY

It is announced that plans are being drawn for a large tannery, probably to be erected on the peninsula near the plant of the Swift Packing Company.

TRANSFER ST. JOHN HOTEL

GOOD MOVEMENT OF PENINSULA PROPERTY. Gas Light Plant Costing \$40,000 Will Be Erected Soon After Plans Are Ready.

LOTS BRING \$11,000

The largest single sale of residence property was made in Piedmont, Albert Paul sold to Caroline Fuqua four lots at the corner of Pearl street and Williams avenue for \$11,000.

WILL BUILD AT ROSE CITY PARK

The special committee appointed by the Rose City Park Improvement League has received 42 answers to the letters sent out to property-owners, asking them if they will not join a concerted building movement in that suburb.

SEATTLE RATE WAR

LONDON, Jan. 18.—Shipping men have predicted that an attempt will be made next week to settle the trans-Atlantic rate war by a conference in this city of representatives of the principal steamship companies.

START ERECTION OF BIG LAUNDRY

East Side Secures Three-Story Plant to Occupy Lot 50 by 200 Feet.

STOP WHITE SLAVE TRADE

Jewish Order of B'nai B'rith Will Head Crusade.

FIRM CHOOSES PORTLAND

Big Fill Along 21 Blocks Begins Soon, Which Will Extend Warehouse District Over Great Area in Central Location.

HELP OUT THE RED CROSS

Campaign to Be Inaugurated for Increase in Membership.

MAY ERECT TANNERY

It is announced that plans are being drawn for a large tannery, probably to be erected on the peninsula near the plant of the Swift Packing Company.

TRANSFER ST. JOHN HOTEL

GOOD MOVEMENT OF PENINSULA PROPERTY. Gas Light Plant Costing \$40,000 Will Be Erected Soon After Plans Are Ready.

LOTS BRING \$11,000

The largest single sale of residence property was made in Piedmont, Albert Paul sold to Caroline Fuqua four lots at the corner of Pearl street and Williams avenue for \$11,000.

WILL BUILD AT ROSE CITY PARK

The special committee appointed by the Rose City Park Improvement League has received 42 answers to the letters sent out to property-owners, asking them if they will not join a concerted building movement in that suburb.

SEATTLE RATE WAR

LONDON, Jan. 18.—Shipping men have predicted that an attempt will be made next week to settle the trans-Atlantic rate war by a conference in this city of representatives of the principal steamship companies.