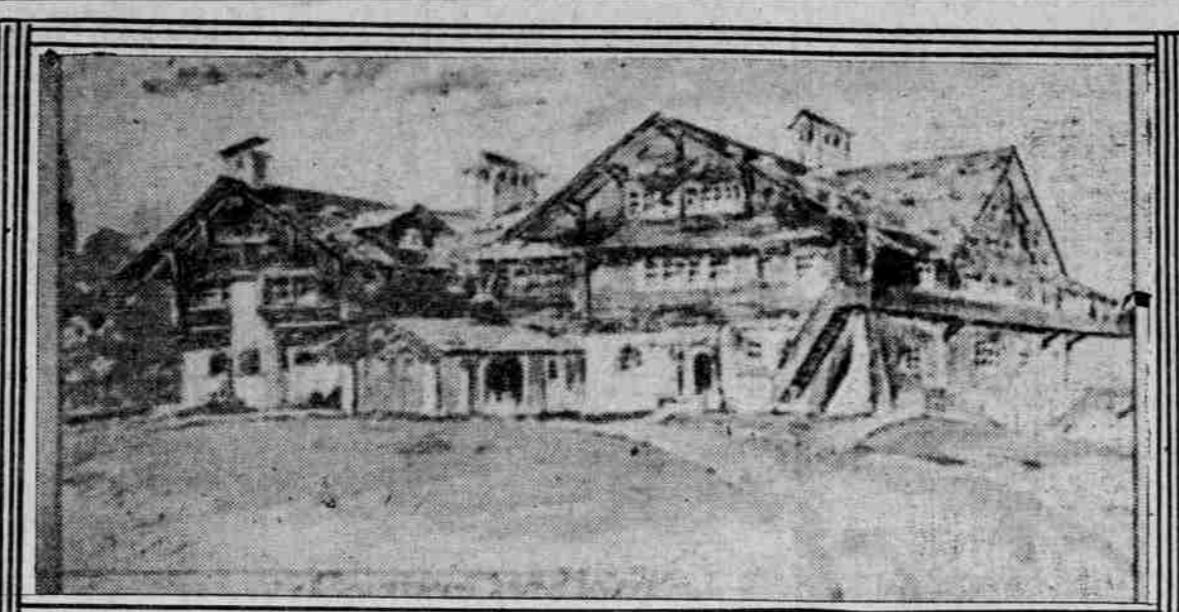


ARCHITECTS SCORE BRILLIANT SUCCESS WITH EXHIBIT

AMBITIOUS EFFORT OF PORTLAND ARCHITECTURAL CLUB RECEIVES PUBLIC ATTENTION AND COMMENDATION WHICH WILL SPUR THEM ON



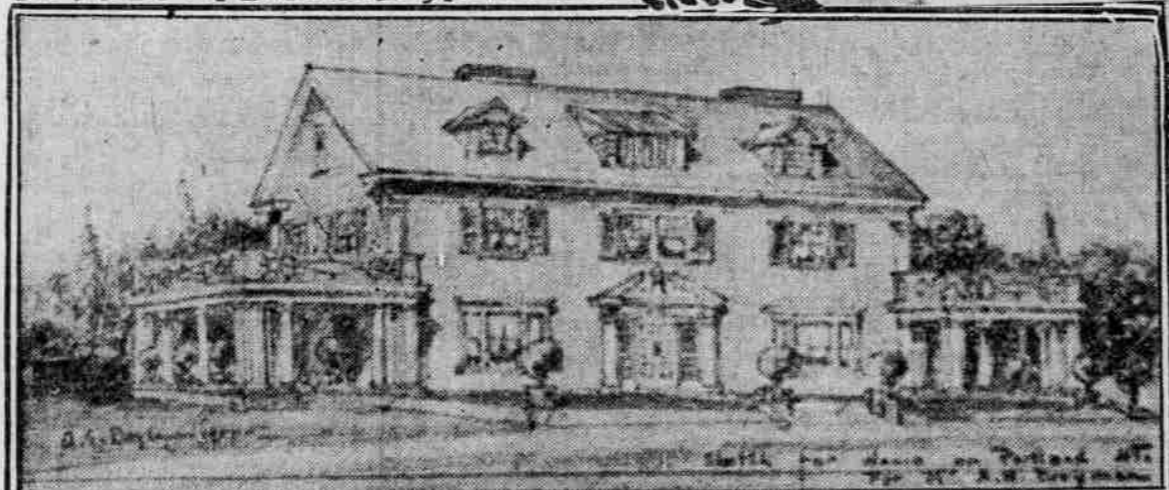
PERSPECTIVE OF PROPOSED OFFICE BLOCK FOR PORTLAND BY D. L. WILLIAMS



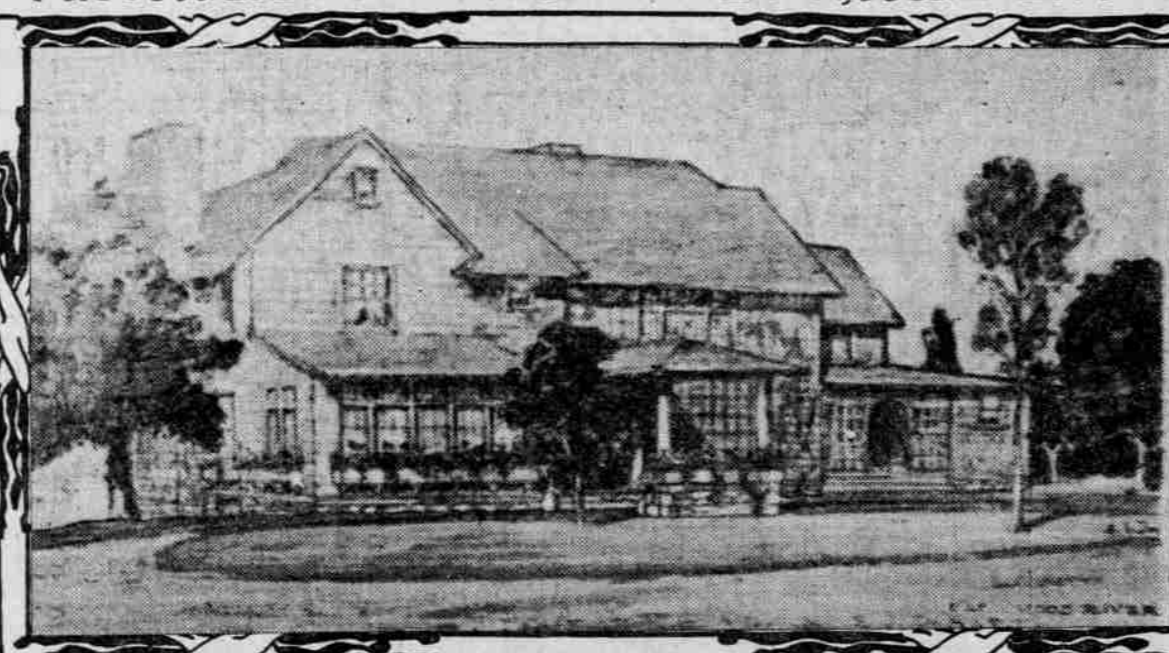
DESIGN FOR CLUBHOUSE SUBMITTED BY CUTTER AND MALMIGREN OF SEATTLE



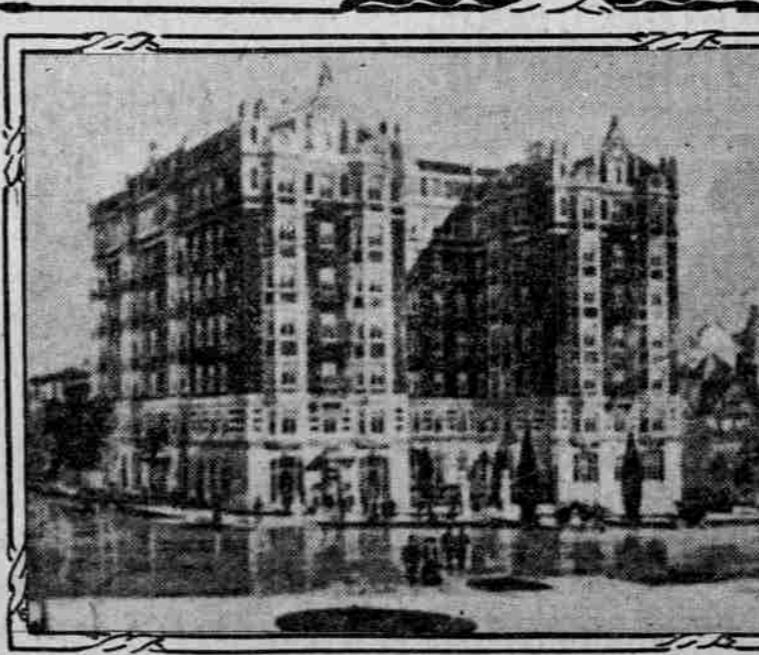
CHALET HAYDEN LOCHER, SUMMER HOME OF JOHN A. FINCH, IDAHO CUTTER & MALMIGREN, ARCHITECTS



SKETCH OF PORTLAND HIS RESIDENCE FOR A. H. BREYMAN - DOYLE & PATTERSON, ARCHITECTS



HOUSE AT HOOD RIVER FOR E. J. DE HART DOYLE & PATTERSON, ARCHITECTS



PERRY APARTMENTS, SEATTLE SOMMERVELL & COTE, ARCHITECTS

frame building with full basement. In connection with the home is a three-acre tract, which can be used for the employment of the boys. The location of the building is elevated and one of the best in the neighborhood. It is a short distance north of the Montavilla carline.

A. C. Kautz has started work on a building for a planing mill on the Southern Pacific Railway, between East Sixth and East Seventh streets, to cost \$3500. It will be occupied as a factory for finished mill work.

Work is progressing on the garage of R. G. Running on East Oak street, between Second and Third streets. It is being erected of brick, and will be 25x100, and cost \$3000.

Work has been started on a frame building for the East Side branch library, on the southeast corner of East Alder and East Eleventh streets, in advance of raising the money. It will be a temporary structure, to be replaced with a permanent stone library when conditions warrant the more pretentious structure.

Architect Otto Kleemann has prepared plans for a new Catholic Church to be erected at Canby, Or. It will be 41x70, of frame construction and with a tower

Eight streets, will be occupied by February 1. Until then the several Masonic lodges which will take quarters in the new building will remain in the Burkhard hall. The main hall in the building is now nearly completed, and is a beautiful lodgeroom.

The finishing touches are being made in the different portions, including the tiling for the entrance to the upper floors facing East Burnside street. It is not expected to have an elaborate dedication, but probably there will be a housewarming when all the lodges are quartered in the new structure. The cost is figured at \$25,000, and the building is one of the most attractive on the East Side.

MODERNIZE HOTEL BUILDING

Burkhard Block to Be Remodeled for First-Class Hostelry.

The Burkhard building on East Burnside street between Union and Grand avenues is to be remodeled into a first-class hotel by the new owners, S. A. Arata, who recently purchased the property for \$15,000. The cost of the changes will be in the neighborhood of \$10,000. Architect Otto Kleemann has been commissioned to prepare plans for the remodeling of the building. These changes will be confined to the two stories above the first floor. The hall at the west end on the third floor will be made into rooms. At the east end of the building the hall occupied by the Masonic lodges, which will vacate February 1, will be made the dining room of the new hotel. The entire upper portion will be overhauled. Walls will be restituted and plumbing renewed. Work will start on these changes as soon as the architect has completed the plans. It is the intention to provide the East Side with another first-class hotel building. The Burkhard building was erected by Joseph Burkhard 14 years ago, who recently disposed of it to S. A. Arata.

UNITE IN NEW DISTRICT

Epworth League Will Hold Session at Sunnyside M. E. Church.

A meeting is soon to be called for the purpose of organizing a Portland district of the Epworth League. Rev. W. B. Hollingshead, presiding elder of the district, has the matter under advisement now and will call a meeting as soon as he can find time to do so. It will be held at the Sunnyside Methodist Episcopal Church, of which Dr. T. B. Ford is pastor, and representatives from all of the charges in the district will be invited to attend.

Owing to the alterations in the boundaries of the four districts comprising the Oregon Conference, a re-organization of the Epworth League districts has also become necessary. Prior to the last annual conference, held in Portland in November, 1907, there was an East and West Portland district, but Bishop Moore merged the two at this point, making one district, officially designated as Portland district.

There are a large number of charges, all of which have an Epworth League chapter. Sunnyside Chapter recently

PORTLAND architects have attained a distinct triumph during the last week with the exhibition of sketches and perspectives in the Museum of Art at Fifth and Taylor streets. It was an ambitious undertaking for so young an organization as the Portland Architectural Club to make a display that would receive public attention and commendation, and the project was not launched without misgivings; but it is not too much to say that the club has surprised itself, for the exhibition is not only an attractive one but it is entertaining and instructive to a high degree and reflects much credit on local draughtsmen.

The Portland Architectural Club was founded two years ago, and is composed largely of the younger members of the profession, although a number of the older firms are on its rolls. One of the chief purposes of the club from the beginning was to provide the organization necessary for a comparative study of architectural work. In promoting the present exhibit the club has gone a step farther and invited the public to see the results reached by designers not only in Portland but throughout the Northwest as well—for the display is not exclusively of local work. Results have more than justified the endeavor, for the public has been impressed as never before with the high standard of architecture followed in this city. Those who have visited the Museum of Art since Tuesday morning, when the display was thrown open, have seen the original conceptions of many of the modern fireproof steel and concrete office buildings erected in Portland, and which involved a large portion of the more than \$5,000,000 building expenditure during 1907. They have also seen remarkable residence work, sketches of familiar scenes in this country and abroad, colored detail studies and comprised in the collection are not a few productions that can be classed as art without stretching a point.

In its extent the exhibition has greatly surprised those who were most active in the arrangements. The Portland architects, almost without exception, made contributions, and leading firms of other Pacific Coast cities are represented. Altogether 476 items are mentioned in the official catalogue, and other sketches were received too late to be tabulated. The display occupies practically all of the available wall space of the three upper rooms of the museum, and a large number of drawings are fastened to screens about the rooms. It is probable that no one who visited the Museum during the week failed to express surprise at the extent of the collection as well as its merit.

Outside of a number of reproductions of celebrated structures of this country and Europe, the most conspicuous items of the display are the perspectives of Portland business and office blocks. The number and character of these, comprising such structures as the Wells-Fargo, Corbett, Falling and Couch buildings, indicate the rapidly with which modern construction has developed in Portland during the last few years. Any showing that could have been made even three years ago would not have compared with the present one. In dwellings, too, those recently constructed or now in contemplation are of better types than the majority of high-class homes built a few years ago. Besides these sketches, a wealth of detail work is shown, together with stained glass designs and ornamentations that would do credit to the draughtsmen of any city.

Those who were instrumental in promoting the exhibition feel grateful to the architects of other cities who have contributed. Firms of San Francisco, Seattle, Spokane, Tacoma and other cities have shown a cordial interest in the display and have helped its success by loaning their best efforts. This out-of-town work has added to the public interest in the display and has special educational value to the architects themselves by bringing together the ideas of men in different cities.

The exhibition will be continued to January 13, and will be open daily from 9:30 to 4:30 o'clock. It will also be open from 7:30 to 11 o'clock on Monday, Wednesday, Friday and Saturday nights, for the benefit of those whose business will not give them opportunity to see it in the daytime. On the nights mentioned and Thursday and Saturday afternoon admission will be free and at all other times a small charge will be made.

The committee in charge of the exhibition is composed of E. F. Lawrence, chairman; F. J. Berndt, president of the club; A. E. Doyle, Joseph Jacobberger and C. J. Lima. Besides the display itself, the club has done a creditable

able work in the preparation of an artistic catalogue, with a cover design by J. M. Tanner and frontpiece by M. H. Whitehouse.

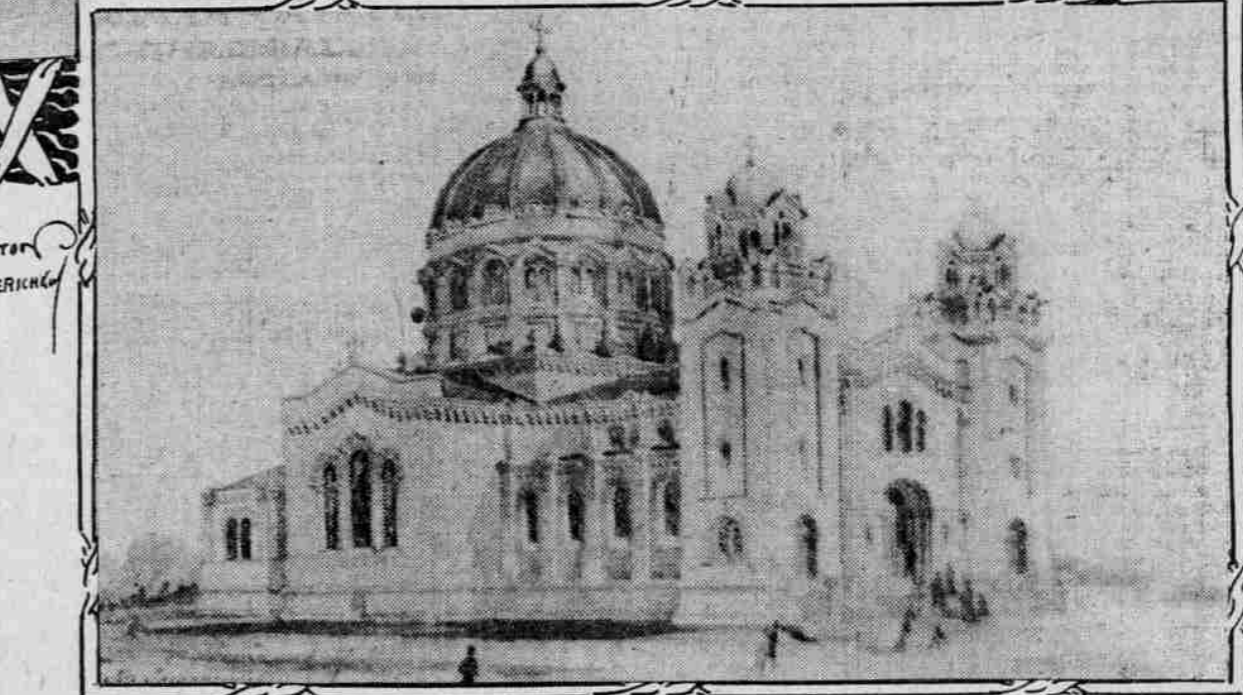
It is the intention of the Architectural Club to follow the present exhibition with a similar one each year. By so doing it is hoped to interest still further architects in other cities and ultimately build up an architectural league on the Pacific Coast. Such an organization has proved a great success in the East and it is probable that arrangements will be made for an exchange of work with the Eastern league.

NO STOPPAGE IN BUILDING

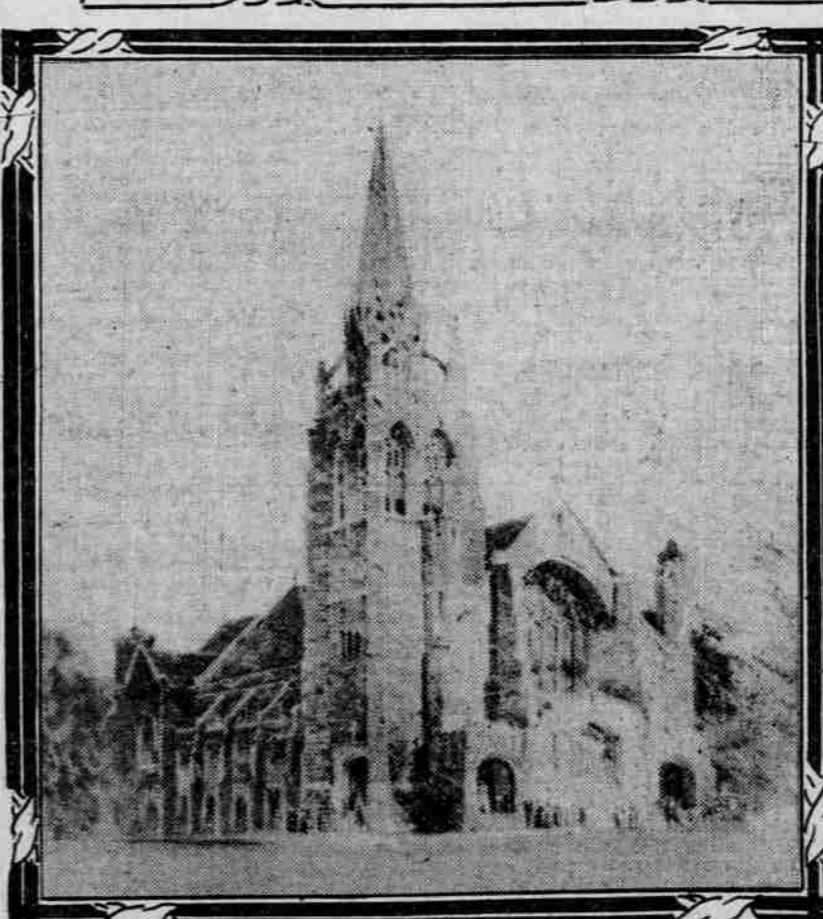
Important Improvements Started on East Side.

Architect C. C. Robbins is completing plans for the new edifice for the Central Christian Church to be erected at the corner of East Twentieth and East Salmon streets. Excavation for the foundation is nearly completed. Con-

MILTON WERKIN



DESIGN FOR ROMAN CATHOLIC CATHEDRAL BY JOSEPH JACOBBERGER



ST. LUKE'S CHURCH, SAN FRANCISCO PER SPECTIVE BY SUTTON & WELLS

crete foundation will be put in at once. The building is to be of concrete and stone or brick. It is to be of the old Mission style prevailing in Southern California. It will cover the quarter block at this corner and cost, when completed, about \$20,000.

The Detention Home for the Juvenile Court, under construction in Center Addition, North Mount Tabor, is nearing completion. It is a large two-story

100 feet high. Rev. Paul Springer is the priest in charge.

FINISH THE MASONIC TEMPLE

Handsome Edifice on East Burnside Ready February 1.

The new Masonic building on the southeast corner of East Burnside and East

extended an invitation to the district chapters to meet and organize, and the invitation has been accepted. The date of the meeting has not been fixed.

NEW WEATHER PROPHECY

Albany Man Gives Western Oregon Monthly Forecasts for 1908.

ALBANY, Or., Jan. 10.—(To the Editor.)—The following monthly weather forecast for 1908 is made especially for Portland and Western Oregon:

January—The temperature and rainfall of the month will be slightly above the average. Portland's temperature for the month, lowest 24 degrees; highest, 60 degrees.

February—The month will be warmer and damper than the average. Portland's temperature, lowest, 26; highest, 67 degrees.

March will be pleasant. Portland's temperature, lowest, 37 degrees; highest, 71 degrees.

April will be warmer and dryer than ordinarily. Portland's temperature for month, lowest, 28; highest, 52 degrees.

May will be warmer and damper than usual. Portland's temperature, lowest temperature, 45; highest, 55 degrees.

June will be warmer than usual. Portland's temperature, lowest, 51; highest, 57 degrees; average for Portland, 62 degrees.

July will be as usual. Portland's temperature, lowest, 52; highest, 56; average, 54 degrees.

August will have some rain after the 15th. Portland's temperature, lowest, 51; highest, 56 degrees.

September will have rain before the 10th. Portland's temperature, minimum, 46; maximum, 50 degrees.

October will be pleasant up to the 25th. Portland's temperature, highest, 53; lowest, 44 degrees.

The remainder of the year as usual. JOHN HOOPER.

RISER CALENDARS HALF PRICE. Original photos. 248 Alder st.

Custom-made shoes at factory cost at Rosenthal's house-cleaning sale.