

PENNANT IS WON BY LOS ANGELES

Pacific Coast League Season Closes With Games Played Today.

BERRY MAKES BIG MISTAKE

Manager of Champions Sells Off the Stars Just as McCredie Did at End of Successful Season Last Year—Gossip of Diamond.

BY W. J. PETRAIN. This afternoon's games at San Francisco and Los Angeles will conclude the Pacific Coast League season of 1907.

A resume of the season shows that all the clubs, while nearly on even terms with themselves, profited by the weakness of the Portland team and fattened their averages at the expense of the McCredie latters.

However, the Portland team proved the best team simply because of Dillon's leadership, and incidentally by taking advantage of the weakness of the San Francisco club during the crisis.

On the other hand, the Portland team was a more valuable man to the San Francisco club than either of the two new men proved to be, with a view to attending to the business of the season the San Francisco management continued to play the new men through the balance of the season.

On the mistake of the Portland management it is unnecessary to dwell at any length, for the story has been told repeatedly in these columns during the past season.

Several Players Suspended From Training Table. UNIVERSITY OF OREGON, Eugene, Or., Nov. 2.—(Special.)—Although the important game with the crack team of the Oregon Agricultural College is scheduled for next Saturday, the varsity football eleven is in a disorganized state and may enter the game with a number of its best men on the sidelines.

With the example of McCredie's experience before him, it is hard to understand how a manager of Henry Berry's evident sagacity could make such a mistake as to sell most of his very best players and take the place of them with practically a new team from Los Angeles next year.

Time will tell, but in this neck of the woods it looks as though Los Angeles will experience a dose of defeat such as was Walter McCredie's portion during the season of 1907.

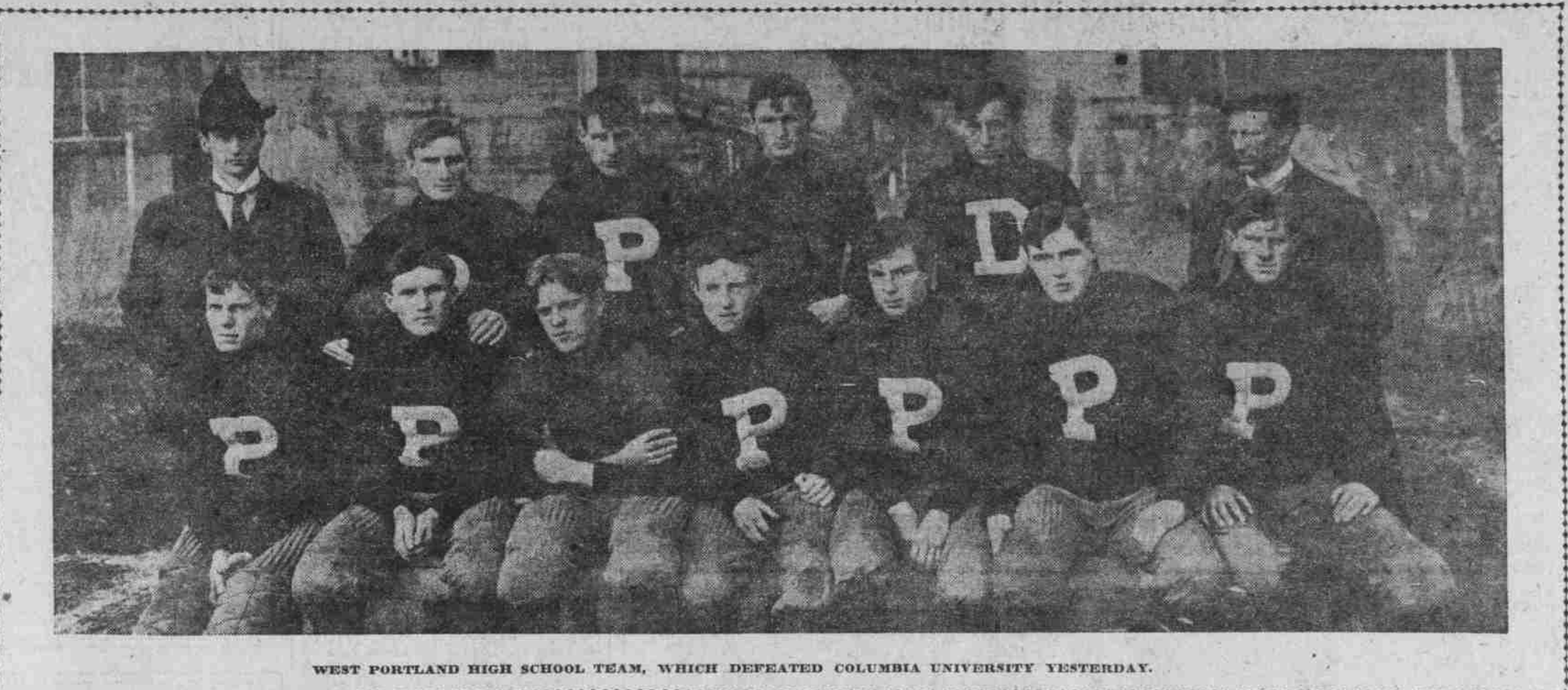
At the recent meeting of the National Association of Minor Leagues in New York City, all clouds heralding disruption were blown away and when the meeting adjourned the warring factions consisting of the Eastern League, the American Association and the Pacific Coast League left the hall on the same standing as before the convention.

Just what action the American Association will take on the question is not known, but it is likely they will acquiesce and be good for the time being.

Other big league players are said to be playing in the California State League in spite of the mandate of the magnates, and will no doubt continue to do so as long as the winter league offers them inducements.

Tuesday night a number of the Portland players can be expected in this city. Several of them are to winter here, while the others will come north to settle up their affairs preparatory to going to their homes in the East.

Pearl Casey announced his intention of spending the winter in Portland before leaving for the South, and in anticipation of his return, Buck Keith and Ed Schiller are planning another



WEST PORTLAND HIGH SCHOOL TEAM, WHICH DEFEATED COLUMBIA UNIVERSITY YESTERDAY.

WEST SIDE HIGH DOWN IN COLUMBIA

Overwhelms Varsity Students by Quick End Runs and Trick Plays.

LATOURETTE PROVES STAR

High School Quarter Runs Team Like Veteran and Gains Average of 15 Yards on Exchange of Punts—Spectacular Run.

By the decisive score of 10 to 0, the West Side High School football team defeated the Columbia University eleven yesterday afternoon on Mt. Hood, practically putting the varsity eleven out of the interscholastic championship race.

To Jack Latourette, quarterback and field captain of the High School team, must be given the credit of Columbia's defeat. In the first half, when Columbia made a quarterback kick, Latourette, playing safety, took the ball, ran 45 yards past the entire Columbia team, and amassed the Columbia eleven by his trick plays and forward passes.

High School made a number of large gains on forward passes and also advanced the ball by a great deal by trick plays. Cross bucks were tried a number of times by the Cardinal players, and in almost every instance, were successful.

Grass kicked off to High School, and the Cardinal team after two unsuccessful efforts to gain yardage, kicked for the forward pass, and the ball was not advanced toward either goal, when High School, gaining the ball on its 30-yard line, commenced the forward passes and trick plays. Slowly the ball was advanced toward the varsity goal.

McKinley, left half, was the High School's best ground-gainer. Both on end runs and line bucks he was always in the thick of the scrimmage. For Columbia, Ennis, Grass, Quinn and Walker played good ball.

High School made a number of large gains on forward passes and also advanced the ball by a great deal by trick plays. Cross bucks were tried a number of times by the Cardinal players, and in almost every instance, were successful.

Grass kicked off to High School, and the Cardinal team after two unsuccessful efforts to gain yardage, kicked for the forward pass, and the ball was not advanced toward either goal, when High School, gaining the ball on its 30-yard line, commenced the forward passes and trick plays.

McKinley, left half, was the High School's best ground-gainer. Both on end runs and line bucks he was always in the thick of the scrimmage. For Columbia, Ennis, Grass, Quinn and Walker played good ball.

High School made a number of large gains on forward passes and also advanced the ball by a great deal by trick plays. Cross bucks were tried a number of times by the Cardinal players, and in almost every instance, were successful.

Grass kicked off to High School, and the Cardinal team after two unsuccessful efforts to gain yardage, kicked for the forward pass, and the ball was not advanced toward either goal, when High School, gaining the ball on its 30-yard line, commenced the forward passes and trick plays.

McKinley, left half, was the High School's best ground-gainer. Both on end runs and line bucks he was always in the thick of the scrimmage. For Columbia, Ennis, Grass, Quinn and Walker played good ball.

High School made a number of large gains on forward passes and also advanced the ball by a great deal by trick plays. Cross bucks were tried a number of times by the Cardinal players, and in almost every instance, were successful.

Grass kicked off to High School, and the Cardinal team after two unsuccessful efforts to gain yardage, kicked for the forward pass, and the ball was not advanced toward either goal, when High School, gaining the ball on its 30-yard line, commenced the forward passes and trick plays.

McKinley, left half, was the High School's best ground-gainer. Both on end runs and line bucks he was always in the thick of the scrimmage. For Columbia, Ennis, Grass, Quinn and Walker played good ball.

JOHNSON IS WINNER

Knocks Out Jim Flynn in the Eleventh Round.

HAS IT ALL HIS OWN WAY

Plays With Colorado Man Through Fight and at Finish. Puts Him Out for Four Minutes With a Right Jab to the Jaw.

OREGON TEAM HAS TROUBLES

Several Players Suspended From Training Table.

MAN WHO OUT-FAPTS TAFT UP AGAINST IT.

MAJOR RICHARDSON COMES 1200 MILES TO TAKE RIDING TEST, THEN CAN'T FIND A BELT BIG ENOUGH.

SEATTLE, Wash., Nov. 2.—(Special.)—After traveling 1200 miles from Skagway, Alaska, to Fort Lawton, Seattle, for the purpose of taking the riding test prescribed for the officers of the Army, Major Wilds P. Richardson, road builder in the northland for the Government, had the temporary mortification today of facing disqualification because of his girth.

JOHNSON TO BE MATCHED WITH BURNS

THE MAJOR WHO GREATLY ENJOYED HIS OWN BELT, AND WAS FORCED TO BORROW ONE FROM CAPTAIN McANDREWS, THE LARGEST OFFICER AT THE POST, BY PURCHASING A HOLE IN THE EXTREME END OF THE BORROWED BELT, THE MAJOR WAS ABLE TO FASTEN IT AROUND HIMSELF AND THE RACE WAS EASY.

TOPPER, Kan., Nov. 2.—Governor Hoch today afternoon issued a pardon to Emmett Dalton, who has been in prison for the Coffeyville bank robbery in 1902 and whose parole was yesterday extended for six days.

THIEF RIFLES CASH DRAWER

OFFICE OF O. W. P. COMPANY ROBBED OF \$198 IN GOLD AND SILVER.

OREGON CITY, Or., Nov. 2.—(Special.)—The money drawer in the freight office of the Oregon Water Power & Railway Company was rifled Wednesday night and the unknown thief got away with \$198 in gold and silver.

NO STOP TO EXTENSION WORK

COAL MINING COMPANIES IN WASHINGTON BUILDING ROADS.

ALBANY 11; HAISEY CLUB 0.

GOLDENDALE 12; HOOD RIVER 0.

ROLL UP BIG SCORE

Farmers Down Pacific University Eleven 50 to 0.

EASILY CRUSH LIGHT LINE

Oregon Agricultural College Players Carry Ball 90 Yards Down Field for Touchdown in Six Formations.

NOTED SPEAKERS AT ALBANY

Linn County Fair to Have Large Exhibit of Apples.

SUNNYSIDE 0; NORTH YAKIMA 0.

PARDONS EMMETT DALTON

GOVERNOR HOCH TURNS LOOSE PERPETRATOR OF FAMOUS ROBBERY.

TOPEKA, Kan., Nov. 2.—Governor Hoch today afternoon issued a pardon to Emmett Dalton, who has been in prison for the Coffeyville bank robbery in 1902 and whose parole was yesterday extended for six days.

THIEF RIFLES CASH DRAWER

OFFICE OF O. W. P. COMPANY ROBBED OF \$198 IN GOLD AND SILVER.

OREGON CITY, Or., Nov. 2.—(Special.)—The money drawer in the freight office of the Oregon Water Power & Railway Company was rifled Wednesday night and the unknown thief got away with \$198 in gold and silver.

NO STOP TO EXTENSION WORK

COAL MINING COMPANIES IN WASHINGTON BUILDING ROADS.

ALBANY 11; HAISEY CLUB 0.

GOLDENDALE 12; HOOD RIVER 0.

WASHING STATE COLLEGE FOOTBALL TEAM.

PULLMAN, Wash., Nov. 2.—(Special.)—The football eleven of Washington State College is one of the strongest teams in the Northwest this season.

WASHINGTON STATE COLLEGE FOOTBALL TEAM.

PULLMAN, Wash., Nov. 2.—(Special.)—The football eleven of Washington State College is one of the strongest teams in the Northwest this season.

WASHINGTON STATE COLLEGE FOOTBALL TEAM.

PULLMAN, Wash., Nov. 2.—(Special.)—The football eleven of Washington State College is one of the strongest teams in the Northwest this season.

WASHINGTON STATE COLLEGE FOOTBALL TEAM.

PULLMAN, Wash., Nov. 2.—(Special.)—The football eleven of Washington State College is one of the strongest teams in the Northwest this season.

WASHINGTON STATE COLLEGE FOOTBALL TEAM.

PULLMAN, Wash., Nov. 2.—(Special.)—The football eleven of Washington State College is one of the strongest teams in the Northwest this season.

WASHINGTON STATE COLLEGE FOOTBALL TEAM.

PULLMAN, Wash., Nov. 2.—(Special.)—The football eleven of Washington State College is one of the strongest teams in the Northwest this season.

WASHINGTON STATE COLLEGE FOOTBALL TEAM.

PULLMAN, Wash., Nov. 2.—(Special.)—The football eleven of Washington State College is one of the strongest teams in the Northwest this season.

WASHINGTON STATE COLLEGE FOOTBALL TEAM.

PULLMAN, Wash., Nov. 2.—(Special.)—The football eleven of Washington State College is one of the strongest teams in the Northwest this season.

WASHINGTON STATE COLLEGE FOOTBALL TEAM.

PULLMAN, Wash., Nov. 2.—(Special.)—The football eleven of Washington State College is one of the strongest teams in the Northwest this season.

WASHINGTON STATE COLLEGE FOOTBALL TEAM.

WASHINGTON STATE COLLEGE FOOTBALL TEAM.

PULLMAN, Wash., Nov. 2.—(Special.)—The football eleven of Washington State College is one of the strongest teams in the Northwest this season.

WASHINGTON STATE COLLEGE FOOTBALL TEAM.

PULLMAN, Wash., Nov. 2.—(Special.)—The football eleven of Washington State College is one of the strongest teams in the Northwest this season.

WASHINGTON STATE COLLEGE FOOTBALL TEAM.

PULLMAN, Wash., Nov. 2.—(Special.)—The football eleven of Washington State College is one of the strongest teams in the Northwest this season.

WASHINGTON STATE COLLEGE FOOTBALL TEAM.

PULLMAN, Wash., Nov. 2.—(Special.)—The football eleven of Washington State College is one of the strongest teams in the Northwest this season.

WASHINGTON STATE COLLEGE FOOTBALL TEAM.

PULLMAN, Wash., Nov. 2.—(Special.)—The football eleven of Washington State College is one of the strongest teams in the Northwest this season.

WASHINGTON STATE COLLEGE FOOTBALL TEAM.

PULLMAN, Wash., Nov. 2.—(Special.)—The football eleven of Washington State College is one of the strongest teams in the Northwest this season.

WASHINGTON STATE COLLEGE FOOTBALL TEAM.

PULLMAN, Wash., Nov. 2.—(Special.)—The football eleven of Washington State College is one of the strongest teams in the Northwest this season.

WASHINGTON STATE COLLEGE FOOTBALL TEAM.

PULLMAN, Wash., Nov. 2.—(Special.)—The football eleven of Washington State College is one of the strongest teams in the Northwest this season.

WASHINGTON STATE COLLEGE FOOTBALL TEAM.

PULLMAN, Wash., Nov. 2.—(Special.)—The football eleven of Washington State College is one of the strongest teams in the Northwest this season.

WASHINGTON STATE COLLEGE FOOTBALL TEAM.

WASHINGTON STATE COLLEGE FOOTBALL TEAM.

PULLMAN, Wash., Nov. 2.—(Special.)—The football eleven of Washington State College is one of the strongest teams in the Northwest this season.

WASHINGTON STATE COLLEGE FOOTBALL TEAM.

PULLMAN, Wash., Nov. 2.—(Special.)—The football eleven of Washington State College is one of the strongest teams in the Northwest this season.

WASHINGTON STATE COLLEGE FOOTBALL TEAM.

PULLMAN, Wash., Nov. 2.—(Special.)—The football eleven of Washington State College is one of the strongest teams in the Northwest this season.

WASHINGTON STATE COLLEGE FOOTBALL TEAM.

PULLMAN, Wash., Nov. 2.—(Special.)—The football eleven of Washington State College is one of the strongest teams in the Northwest this season.

WASHINGTON STATE COLLEGE FOOTBALL TEAM.

PULLMAN, Wash., Nov. 2.—(Special.)—The football eleven of Washington State College is one of the strongest teams in the Northwest this season.

WASHINGTON STATE COLLEGE FOOTBALL TEAM.

PULLMAN, Wash., Nov. 2.—(Special.)—The football eleven of Washington State College is one of the strongest teams in the Northwest this season.

WASHINGTON STATE COLLEGE FOOTBALL TEAM.

PULLMAN, Wash., Nov. 2.—(Special.)—The football eleven of Washington State College is one of the strongest teams in the Northwest this season.

WASHINGTON STATE COLLEGE FOOTBALL TEAM.

PULLMAN, Wash., Nov. 2.—(Special.)—The football eleven of Washington State College is one of the strongest teams in the Northwest this season.

WASHINGTON STATE COLLEGE FOOTBALL TEAM.

PULLMAN, Wash., Nov. 2.—(Special.)—The football eleven of Washington State College is one of the strongest teams in the Northwest this season.

WASHINGTON STATE COLLEGE FOOTBALL TEAM.

WASHINGTON STATE COLLEGE FOOTBALL TEAM.

PULLMAN, Wash., Nov. 2.—(Special.)—The football eleven of Washington State College is one of the strongest teams in the Northwest this season.

WASHINGTON STATE COLLEGE FOOTBALL TEAM.

PULLMAN, Wash., Nov. 2.—(Special.)—The football eleven of Washington State College is one of the strongest teams in the Northwest this season.

WASHINGTON STATE COLLEGE FOOTBALL TEAM.

PULLMAN, Wash., Nov. 2.—(Special.)—The football eleven of Washington State College is one of the strongest teams in the Northwest this season.

WASHINGTON STATE COLLEGE FOOTBALL TEAM.

PULLMAN, Wash., Nov. 2.—(Special.)—The football eleven of Washington State College is one of the strongest teams in the Northwest this season.

WASHINGTON STATE COLLEGE FOOTBALL TEAM.

PULLMAN, Wash., Nov. 2.—(Special.)—The football eleven of Washington State College is one of the strongest teams in the Northwest this season.

WASHINGTON STATE COLLEGE FOOTBALL TEAM.

PULLMAN, Wash., Nov. 2.—(Special.)—The football eleven of Washington State College is one of the strongest teams in the Northwest this season.

WASHINGTON STATE COLLEGE FOOTBALL TEAM.

PULLMAN, Wash., Nov. 2.—(Special.)—The football eleven of Washington State College is one of the strongest teams in the Northwest this season.

WASHINGTON STATE COLLEGE FOOTBALL TEAM.

PULLMAN, Wash., Nov. 2.—(Special.)—The football eleven of Washington State College is one of the strongest teams in the Northwest this season.

WASHINGTON STATE COLLEGE FOOTBALL TEAM.

PULLMAN, Wash., Nov. 2.—(Special.)—The football eleven of Washington State College is one of the strongest teams in the Northwest this season.

WASHINGTON STATE COLLEGE FOOTBALL TEAM.