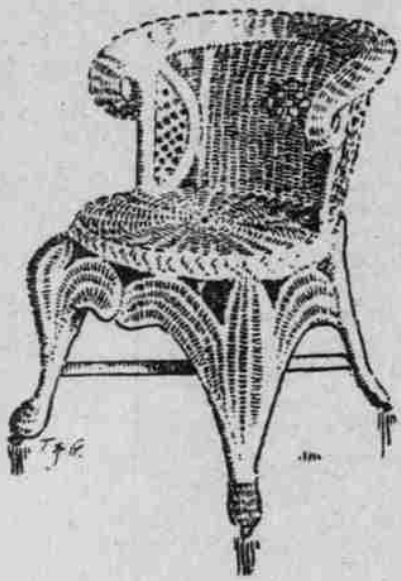


ART WALLPAPER FOR ALL ROOMS—INTERIOR DRAPERY AND DECORATIVE WORK OUR SPECIALTY

OUR SUMMER CLEARANCE SALE OF PORCH AND LAWN FURNITURE—ATTRACTIVE OUTDOOR PIECES IN ALL THE POPULAR FINISHES AT REDUCED PRICES



\$10.00 Linen Fiber Chair in the green; special \$5.00
 \$8.00 4-ft. Garden Bench in the red; special \$5.25
 \$8.75 5-ft. Garden Bench in the red; special \$5.75
 \$9.50 6-ft. Garden Bench in the red; special \$6.25

Summer furniture of neat and characteristic design and finish; easy, restful pieces, in the linen fiber; attractive and comfortable chairs and seats, in the varnished natural wood; porch furniture in a number of artistic stained finishes; swings for the porch or lawn. Any need in Summer furniture can be supplied at this time at a price which will appeal to the economical. Your credit is good.

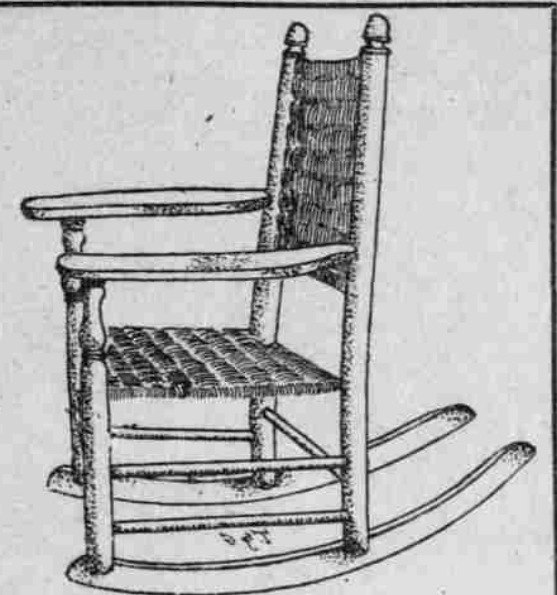
\$2.50 "Old Hickory" Stool; special \$1.25
 \$3.00 Camp Chair; special \$1.75
 \$3.50 "Old Hickory" Arm Chair; special \$1.90
 \$6.75 Linen Fiber Chair, in the natural finish; special \$2.95
 \$6.00 solid oak Chair in the green finish; special \$3.90

\$12.00 Linen Fiber Hamper in the green; special \$6.25
 \$12.50 Linen Fiber Rocker in the natural finish; special \$6.75
 \$13.00 Linen Fiber Rocker in the green; special \$6.75
 \$10.50 Arm Chair in the moss green finish; special \$7.00

\$11.00 Linen Fiber Table in the green finish; special \$7.25
 \$13.00 Arm Chair in the green finish; special \$7.50
 \$12.00 Arm Chair in the moss green finish; special \$8.00
 \$13.00 Settee in the moss green; special \$8.00

\$10.00 Linen Fiber Chair in the green finish; special \$3.90
 \$10.50 Linen Fiber Chair in the green finish; special \$4.60
 \$13.00 Teakwood Chair with linen fiber seat and back; special \$4.90
 \$7.25 Reed Arm Chair; special \$4.95
 \$9.00 Linen Fiber Rocker in the green; special \$5.00

\$12.50 Linen Fiber Arm Chair in the green; special \$8.25
 \$13.50 Arm Chair in the moss green; special \$8.50
 \$11.50 Linen Fiber Rocker in the natural finish; special \$9.00
 \$14.00 solid oak Settee in the green finish; special \$9.25



\$15.00 Garden Swing; special \$9.75
 \$16.00 Garden Swing; special \$10.50
 \$21.00 Teakwood Settee with linen fiber seat and back; special \$11.50
 \$30.00 Malacca Fiber Settee; special \$19.50
 \$63.00 oak frame fiber Settee with loose leather cushion; special \$39.50

BARGAIN ITEMS FROM THE EXCHANGE DEPT.

Our Exchange Department is of special interest to those who intend buying furniture. Here we accept your old furniture, stoves, etc., in part payment for newer furnishings and allow you an extremely liberal value upon them. Inquiry regarding exchange solicited. Phone Exchange 34. Attention is called to these special values for a few days only:

Full size Iron Beds, in two designs; special \$2.50
 Parlor Cabinets, in mahogany finish, beveled plate mirror; regular price \$9.50; special \$6.35
 Folding Bed, in the golden elm; three-quarter size; regular price \$22.00; special \$10.00
 Golden Oak China Closet; regular price \$70; special \$50.00
 Weathered Oak Buffet; regular price \$75.00; special \$50.00
 Roll-top Desk, regular price \$80.00; special \$62.50
 Three-piece Dining Set in solid oak—table, buffet and china closet; regular price \$150.00; special \$75.00

CLEARANCE SALE THIS SEASON'S GO-CARTS



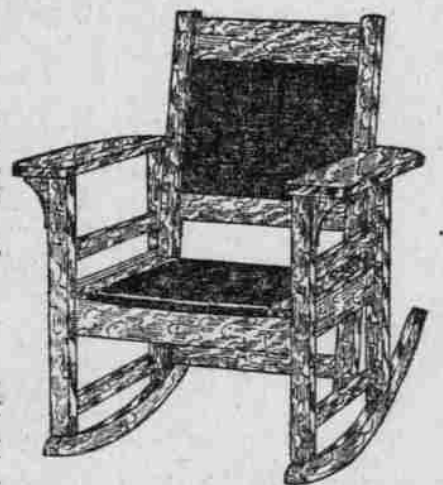
Clearance values on our entire line of this season's Go-Carts. The most up-to-date, dependable and easy-running gear and the best and simplest folding construction. Your credit is good.



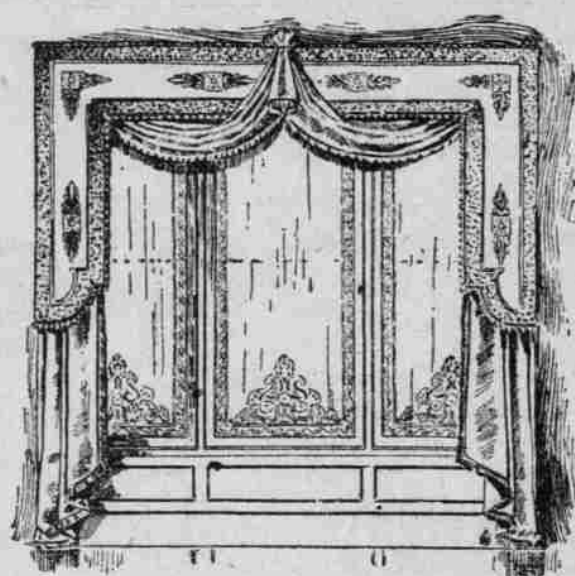
\$3.00 Go-Cart; special \$1.90
 \$5.00 Go-Cart; special \$3.25
 \$6.00 Go-Cart; special \$4.50
 \$6.75 Go-Cart; special \$5.00
 \$7.50 Allwin Collapsible Go-Cart; special \$5.75
 \$12.50 Allwin Collapsible Go-Cart; special \$7.75
 \$12.00 Reed Body Go-Cart; special \$9.00
 \$14.00 Allwin Collapsible Go-Cart; special \$10.50

\$17.50 Reed Body Go-Cart; sp'l \$13.00
 \$20.00 Allwin Collapsible Go-Cart, full nickel-plated frame; sp'l \$15.00
 \$23.00 Go-Cart; special \$17.25
 \$29.00 Fiber Body Go-Cart; sp'l \$19.50
 \$35.00 Go-Cart; special \$22.50
 \$40.00 Go-Cart; special \$25.00
 \$48.00 Go-Cart; special \$32.00
 \$55.00 English Perambulator; special \$36.50

MISSION ROCKERS SPECIAL AT \$6.75



Another special sale of characteristic, substantial and comfortable Mission Rockers; frame of solid, quarter-sawed oak, in the weathered finish; back and seat upholstered in genuine leather; a neat, comfortable, durable and handsome rocker. Regular price \$9.50. For a few days only at the above special. Your credit is good.



DRAPERY DEPT.—SHOWING OF NEW EFFECTS IN LACE CURTAINS

Our Fall importation has arrived. A more complete, new, elegant and extensive assortment has never been shown in the West than in our department at this time. Even though you do not need Window Laces at present, it will be highly entertaining to you and a pleasure to us to have you see this showing of Curtains. To state briefly, our stock consists of:

Italian Filet Laces in white, ivory and Arabian \$12.50 to \$30.00
 Point de Luxe Laces in ivory and white; per pair \$18.00 to \$45.00
 Schiffli Laces in white and ivory; per pair \$17.50 to \$30.00
 Real Italian Thread Lace Arabians; per pair \$17.50 to \$150.00
 Morocco Laces in ivory and Arabian; per pair \$18.00 to \$60.00
 Flemish Point Laces in white and Arabian; per pair \$18.00 to \$37.50

Cluny Laces in white and Arabian; the finest stock ever shown; pair \$3.50 to \$65
 Brussels Laces in white only; per pair \$4.75 to \$60.00
 Marie Antoinette Laces in white, ivory and Arabian; per pair \$4.75 to \$50.00
 Point Duchesse Laces in white and ivory; per pair \$18.00 to \$45.00
 Real Italian Filet Window and Door Panels; each \$18.00 to \$70.00
 La Belle Idea in French Door Laces; per pair \$18.00 to \$80.00
 Etamine Arabian Curtains; per pair \$20.00 to \$46.00
 Hand-made Laces in special widths, lengths and designs; made to order; per pair \$8.00 to \$75.00

Real Antiques on nets and scrims; per pair \$7.50 to \$18.00
 Real Swiss Renaissance Laces; per pair \$9.00 to \$35.00
 Real French Lassa Arabians; per pair \$12.50 to \$45.00
 Vestibule Sets in white or Arabian tints, in Filet, lassa or thread Arabians; per pair \$18.00 to \$200.00
 Lace Edges and Insertions in Cluny, Arabian or Renaissance, at yd. 5c to \$30
 Ornaments, Corners, Centerpieces, Rosettes, Fleur de Lis, Empire Wreaths, Motifs, etc.; each 10c to \$8.00
 Any demands in Special Laces or Panels we can execute correctly and promptly.

ALL HAMMOCKS REDUCED

Seasonable bargains in our entire remaining stock of Hammocks. Basement Department.

\$1.00 fish net Hammocks; special 60c
 \$1.25 fish net Hammocks; special 75c
 \$1.75 Hammocks; special \$1.00
 \$2.50 Hammocks; special \$1.55
 \$2.75 Hammocks; special \$1.65
 \$3.25 Hammocks; special \$2.10

JAP. MATTINGS REDUCED

CARPET DEPT.—SIXTH FLOOR

A timely special in this popular and serviceable Summer floor-covering. Sale includes plain white, reds, greens, blues, etc., and artistic mixed color designs in an endless variety. This special for a few days only. Your credit is good.

Regular 50c qualities; special 30c
 Regular 35c qualities; special 22c
 Regular 30c qualities; special 20c
 Regular 25c qualities; special 15c
 Regular 20c qualities; special 12c

FURNITURE UPHOLSTERING, REPAIRING AND REFINISHING, TELEPHONE EXCHANGE 34

TULL & GIBBS
 COMPLETE HOUSE FURNISHERS
 YOUR CREDIT IS GOOD MAKE YOUR OWN TERMS

ALL MAIL ORDERS WILL BE GIVEN OUR CAREFUL AND PROMPT ATTENTION

DIFFER ON WORKING TIME

Miners and Operators in Conference at Seattle.

SEATTLE, Aug. 17.—(Special.)—Coal-producing corporations have submitted an alternative wage scale to the United Mine Workers, offering to advance the wages of the men in the mines and to grant concessions in working conditions if the demand for an eight-hour day, based on the time the men enter the shaft, is withdrawn. The operators' wage scale differs materially from the one presented by the union, but the average wage advance is pretty close to the 15 per cent demand of the United Mine Workers. The operators have adopted a different pol-

icy of grading the men, and it is over this question that the conference between the miners and the operators spent their time. It is declared positively that the operators will not agree to the eight-hour rule proposed by the union. The mine owners fought a similar proposal when it was made to the Legislature last winter, and declared today that the acceptance of the miners' wage scale will mean the reduction of the coal output by fully 25 per cent, and would compel the operators to abrogate contracts for a big percentage of their output. Coal prices would also have to be advanced to meet the new conditions. The miners insist that the day shall commence at the time the men enter the shafthouse, and that they shall be

brought out of the mine on company time. The operators today insisted that they will continue to recognize an eight-hour day, but time shall be computed from the minute the men reach the face of the workings, and that they shall remain at work taking out coal for eight hours. The companies do not concede the right of the men to a half hour for lunch on company time. With both the miners' demands and the operators' alternatives before the conference, it is expected the question will be fought out and that a compromise will be effected. The miners and operators expect to spend at least one more week in conference before a wage schedule is signed. Should the miners stand firm on their two demands, it is declared the operators will refuse to grant them, and

danger of a serious strike will occur. In anticipation of trouble or an advance in coal, heavy orders for fuel are being placed, and many of the dealers and consumers are preparing to carry a big stock. **New Mill Replaces One Burned.** CENTRALIA, Wash., Aug. 17.—(Special.)—Montzer Bros., of Tenino, have commenced the erection of a new mill to replace the one destroyed by fire a short time ago. The new mill will have a capacity of 125,000 feet of lumber a day, and will be modern in every respect. It is expected that the mill will be cutting its own lumber in about 90 days, although the mill will not be completed in less than four or five months.

PORTLAND CONCERN BIDS

Offer of Warren Company for Paving at Centralia.

CENTRALIA, Aug. 17.—(Special.)—At a meeting of the City Council held this week the bids for paving Tower avenue with a bitulithic pavement were called for. There was only one bid, namely, from the Warren Construction Company, of Portland. The company agrees to do the work for \$56,422.20. This is nearly 20 per cent higher than the City Engineer's estimate, that being \$46,572. The only time stipulation was that the work shall be finished before next July. A representative of the company stated that the bid was the lowest price that the work

could be done for. The Council will probably accept the bid, as the price of paving is evidently going up. **Trouble Over Timber Cutting.** OREGON CITY, Or., Aug. 17.—(Special.)—Garrison B. Nickell has been summoned to appear in the County Court next Tuesday to show cause why a restraining order should not be issued preventing him from cutting the timber from lot 4, section 27, township 2 south, range 1 west. The land is claimed by George W. Yergen, who says that Nickell filed a pretended homestead claim in 1906, proving up and obtaining a certificate the following year, when Yergen filed a contest, which is now pending. In June of this year the defendant began cutting and selling the timber for wood, and this month installed a power plant, with a capacity of 20 cords per day. He has already cut 100 cords of wood, and threatens to cut all of the timber. Yergen places his damages at \$500.

Attack Tuttle Law. SALEM, Or., Aug. 17.—(Special.)—The constitutionality of the law known as the Tuttle good roads act is raised in the suit of St. Benedict's Abbey vs. the Marion County Court and other county officials, filed in the Circuit Court to enjoin the levy and collection of costs for the construction of a new macadam road between Marquam and Silverton, which has been petitioned for and allowed, and the costs for which are to be assessed to the property-owners for one mile on each side and one mile at each end of the proposed improvement.