

SUMMER REALTY MARKET ACTIVE

Building Brisk and Demand for Residence Property Is Strong.

MANY SALES ANNOUNCED

Frame Buildings Down Town Being Demolished to Make Room for New Edifices—Seven-Story Building Announced.

PORTLAND'S GREAT BUILDING ACTIVITY.

Since May 1 building permits have been taken out for structures, the total value of \$2,300,721. The total for May was \$1,088,033; for June, \$654,965; for July, \$700,721.

Table with columns: Dwelling, Number, Value. Rows include ranges like \$1,000 to \$2,500, \$2,500 to \$5,000, etc.

Despite the enervating effects of the dog days, the Portland realty market continues brisk and has felt no appreciable slump since Summer set in.

Interest just now is greatest in residence property. Large numbers of these sales have been made during the week and realty dealers report that during July they effected heavy business in this class of sales.



NEW FLATS OF MRS. INEZ A. HUBBARD, TENTH, NEAR MILL.

business blocks. The present Summer shows no exception to this general rule, although the transfers made eclipse the business of former seasons.

Building Active on Every Hand.

Go wherever you will about Portland, you cannot escape the hammering that accompanies the building of some new structure. The retail district bears a constant fusillade from workmen busy on the new skyscrapers on the principal business streets.

was \$600 for the site and Mr. Krebs proposes to build a \$10,000 residence at once. This is a handsome location and is surrounded by splendid residences.

Another Seven-Story Building.

The erection of another seven-story business brick building is announced by Lot Q. Swetland, who says he proposes to duplicate the one now going up at the corner of Fifth and Washington streets.

The grocery firm of F. Dresser & Co. will move from its present location at Seventh and Washington streets to the building now occupied by Prael, Hegale & Co. at the southeast corner of Fifth and Stark streets.

The Northwest Guaranty & Trust Company have purchased the Buckman tract in East Portland, consisting of 12 blocks. The realty and the improvements to the tract contemplated will cost \$300,000.

Sellwood Tract Sold.

The Title Guaranty & Trust Company has just purchased 33 acres adjoining Sellwood from H. M. Fitch for \$10,000. The tract will be platted at once and put on the market.

A recent sale in the business district on the West Side is 10x23 feet on Couch street, between Fifth and Sixth streets, by Mrs. Elizabeth Young to Jaeger Book, for \$10,000.

List of New Buildings.

The following list shows the dwellings and business structures of the value of \$1000 and up, permits for which have been taken out since May 1.

Dwellings \$1000 to \$2500.

DAVID WILLIAMS—Two-story frame dwelling on East Tenth street, between Skidmore and Mason; \$1500.

C. A. BIGELOW—Two-story frame dwelling on East Fifteenth street, between East Alder and East Washington; \$1500.

T. M. BURGIN—Two-story frame dwelling on Falling street, corner Kerby; \$3000.

H. H. SPAULDING—One-story frame dwelling on East Eighth street, between Going and Prescott; \$3000.

MRS. ROWE—One-story frame dwelling on East Tenth street, near East Tenth; \$1000.

MRS. D. ALLISON—One-story frame dwelling on Alberta street, near East Tenth; \$1000.

A. L. JAGER—Two-story frame dwelling on Sellwood, between Rodney and Union; \$1500.

E. C. MARTIN—Two-story frame dwelling on East Tenth street, corner Broadway; \$3000.

GEORGIA BATCHELLER—Two-story frame dwelling on East Tenth street, between Twentieth and Twenty-second; \$1500.

BLANCHE ROSS—One-story frame dwelling on East Nineteenth street, corner 17th; \$1000.

A. J. SIMPSON—One-and-a-half-story frame dwelling on East Yamhill, corner East Twenty-second; \$1500.

D. HORNETT—Two-story frame dwelling on William street, between Page and Russell; \$1000.

MRS. HESPERNHEIM—One-story frame dwelling on East Thirty-fourth street, near Hawthorne; \$1500.

A. GIEBISCH—Two-story frame dwelling on Halsey street, between Ninth and East Twenty-first; \$3000.

A. F. RUSSELL—Two-story frame dwelling at head of Davenport street; \$1500.

A. JONES—Two-story frame dwelling on East Thirty-fifth street, between East Market and Hawthorne; \$1500.

C. A. BEIG—Two-story frame dwelling on Sacramento street, near Union; \$1500.

M. W. PRIEST—One-and-a-half-story frame dwelling on Cook street, between Vancouver and Gantenbein; \$1000.

H. W. LITTLE—One-story frame dwelling on Knapp street, corner First; \$2000.

D. MUR—One-story frame dwelling on East Thirty-eighth street, corner East Morrison; \$1500.

H. E. ECKERT—Two-story frame dwelling on Springfield street, corner East Sixth; \$1000.

H. T. WARDLSON—Two-story frame dwelling on Northwick street, between Beach and Falling; \$1500.

CARL SCHMIDT—One-story frame dwelling on Porter, between First and Second; \$1000.

SAMUEL HOLM—Two-story frame dwelling on East Eighth street, corner Hooker; \$1500.

MRS. D. A. MORRIS—Three one-and-a-half-story frame dwellings on East First, corner Hooker; \$1500.

E. J. EDER—Two-story frame dwelling on Hooker street, between Fourth and Fifth; \$2000.

C. KRUGER—Two two-story frame dwellings on Buchta avenue, corner East Ankeny; \$1500 each.

J. H. SCHNEEL—Two-story frame dwelling on Ivy street, between Rodney and Union; \$1000.

MRS. SARAH A. MORGAN—Two-story frame dwelling on Thirtieth street, between Tillamook and Thompson; \$3000.

MISS BROWN—One-story frame dwelling on East Tenth street, near East Tenth; \$1000.

JOHN BOWERS—One-and-a-half-story frame dwelling on Russell street, between Union and East Seventh; \$1500.

C. R. BLACK—One-story frame dwelling on Northwick street, between Killingsworth and Jessup; \$1000.

J. J. RICHARDSON—Four one-and-a-half-story frame dwellings on East Tenth street, corner York; \$1500 each.

FRED HOBBSIFERK—Two-story frame dwelling on East Tenth street, corner Hooker; \$1500.

C. E. LEMOX—One-and-a-half-story frame dwelling on East Tenth street, corner Bowman; \$1000.

K. W. KRON—Two-story frame dwelling on Ivy street, corner Vancouver; \$1500 each.

A. W. SMITH—Two-story frame dwelling on Union avenue, between Going and Wygant; \$1500.

F. H. HARDING—Four one-story frame dwellings on Third street, corner Sheridan; \$1000 each.

JAMES LUGG—Two-story frame dwelling on East Ninth, near Brooklyn; \$1500.

G. MURKOCK—One-story frame dwelling on East Thirty-sixth street, between East Taylor and Salmon; \$1000.

M. G. LYNCH—Two-story frame dwelling on Belmont street, between East Thirty-seventh and East Thirty-eighth; \$1500.

A. W. WELLS—Two-story frame dwelling on East Tenth street, between East Tenth and East Eleventh; \$1500.

ETHEL M. STOWE—One-story frame dwelling on Almsworth street, near East Tenth; \$1000.

F. FISCHER—One-and-a-half-story frame dwelling on Michigan street, near Killingsworth; \$1000.

B. C. JAKWAY—Two-story frame dwelling on East Thirtieth street, corner East Madison; \$1500.

J. A. PUEN—One-and-a-half-story frame dwelling on East Tenth street, near Portland boulevard; \$1500.

R. WHITE—One-and-a-half-story frame dwelling on East Tenth street, corner Salmon; \$1500.

THE TRUST COMPANY—Four two-story frame dwellings on Blackstone, corner Vaughn; \$1500.

H. KING—Two-story frame dwelling on East Eighth North, between Mason and Shaver; \$1500.

CHARLES ORCHARD—Two-story frame dwelling on East Stark; \$3000.

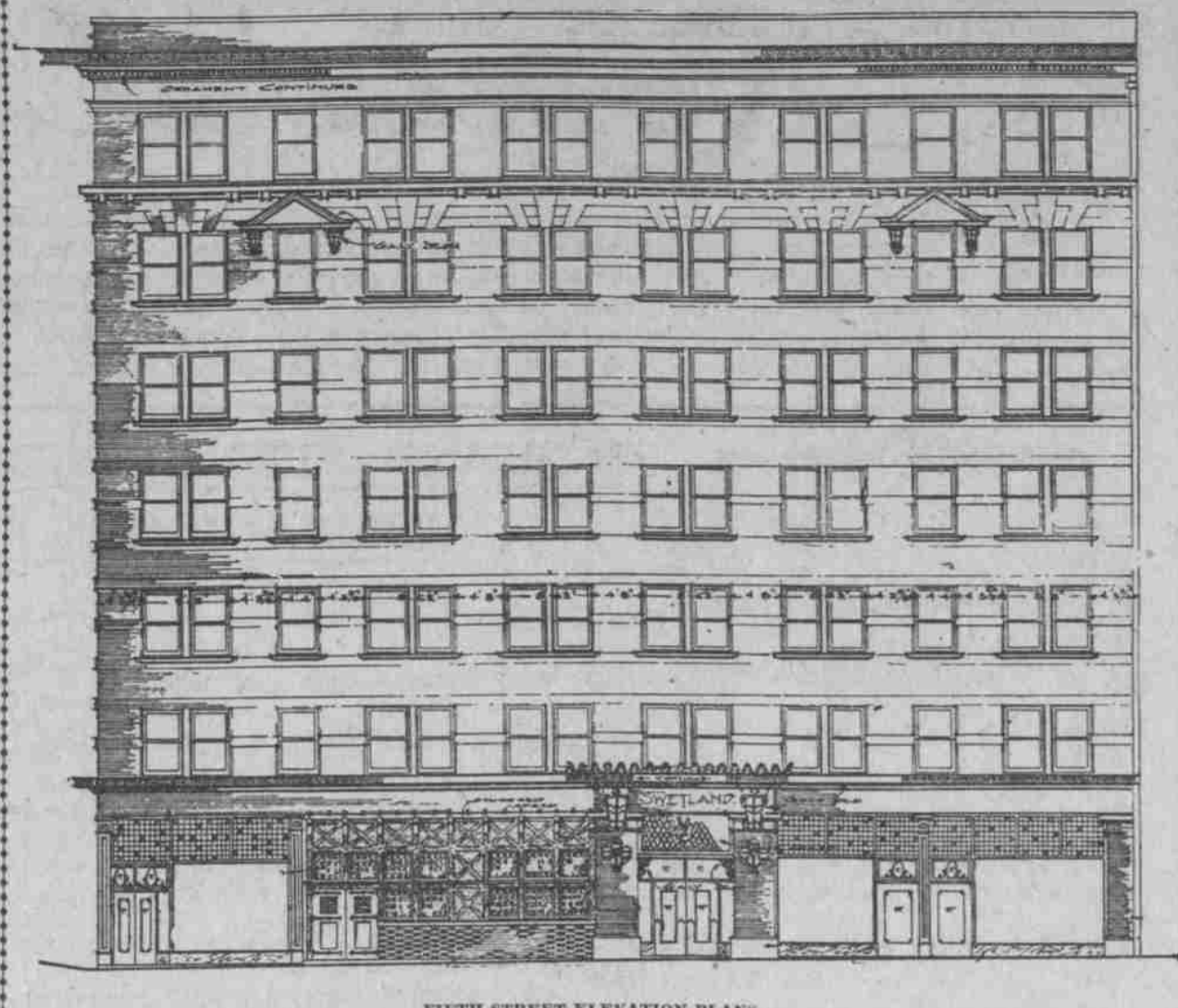
CARL SCHLICHERS—One-story frame dwelling on Tillamook street, near Union; \$1000.

J. H. BARD—Two-story frame dwelling, near Columbia boulevard; \$1800.

MRS. R. S. ROBINSON—Three two-story frame dwellings on East Tenth and North Twenty-second; \$1500 each.

W. S. AND O. J. PURDY—Two-story frame dwelling on Commercial street, corner Blansard; \$1500.

L. Q. SWETLAND ERECTS SEVEN-STORY BUILDING AT FIFTH AND WASHINGTON



FIFTH-STREET ELEVATION PLANS.

The modern seven-story brick building now going up at the corner of Fifth and Washington streets that is being erected by L. Q. Swetland, of Portland, will be a model office building, and will cost over \$300,000. It will be completed later this year, and part of the structure has already been rented.

Mr. Swetland has secured a lease from the owner of the lot on the corner of the two streets from the owner, Mrs. N. J. Faling, for 20 years. One side of the building will face the Perkins Hotel and the structure will replace shacks that have stood on the ground for the past 35 years.

The iron frame of the building is now going up. Workmen are busy setting the pillars for the first story.

B. M'KINLEY—Two-story frame dwelling on East Mill, between East Eighth and East Ninth; \$1500.

A. ANDERSON—Two-story frame residence on Belmont street, between Dixon and Lupton; \$1500.

R. J. BURKE—Two-story frame residence on East Alder and East Washington; \$1500.

I. E. FINSTON—Two-story frame dwelling on East Tenth street, between East Twenty-second and East Twenty-third; \$1500.

GEORGE S. GRUBER—Two-story frame dwelling, fronting on Belmont street, corner East Tenth; \$1500.

MRS. M'LEAN—Two-story frame dwelling, fronting on Bancroft street, near Tenth; \$1500.

GIS WAHLGREN—Two-story frame dwelling, fronting on East Irving and East Glessan, East Second and East Third; \$2000.

MRS. J. M. HIRSH—Dwelling fronting on Washington street, corner S. C. Street; \$1500.

HARRY FRANKS—Two-story frame dwelling, fronting on East Ankeny, between East Twenty-ninth and East Thirtieth; \$1500.

JAMES JARVIS—One-story frame dwelling on corner Emerson and Aldin; \$1000.

C. G. SATTLEBERRY—One-and-a-half-story frame dwelling on East Eleventh street, near East Tenth; \$1500.

A. L. LINEBAUGH—Two-story frame dwelling on East Salmon, corner East Tenth; \$1500.

ALFRED WASCHER—Two-story frame dwelling on Rodney street, between Knott and Second; \$1500.

GEORGE BIELOH—Two-story frame dwelling on Skidmore, corner Michigan; \$1000.

G. F. HINMERS—One-story frame dwelling on Thirtieth street, corner Sherry; \$1200.

ANNIE CONWAY—Two-story frame dwelling on Second street, corner North Twentieth; \$3000.

ANDY BOESL—One-story frame dwelling on Miller avenue, between East Thirtieth and East Thirtieth; \$1500.

THOMAS WEST—Two-story frame dwelling on East Fourteenth street, corner Pine; \$2500.

MRS. M. J. LYONS—Two-story frame dwelling on East Thirty-fourth street, between East Clay and East Market; \$1500.

F. W. YERKE—One-and-a-half-story frame dwelling on Huron street, corner Burrage; \$1500.

J. JOHNSON—One-story frame dwelling on Albin street, between Shaver and Union; \$1000.

S. W. SAWDON—One-story frame dwelling, fronting on Killingsworth street, between Union and East Sixth; \$1000.

MRS. D. DUDACK—Two two-story frame dwellings on Park street, corner Jackson; \$2000 each.

W. O. STIFF—Two-story frame dwelling on Beach street, corner Grand; \$1500.

ELIZA S. HARTNESS—Two-story frame dwelling on Multnomah street, corner Grand; \$2000.

H. BIRDIN—Two-story frame dwelling on Park avenue, between East Seventh and East Ninth; \$2000.

A. J. FEILING—One-story frame dwelling on Northwick street, near Skidmore; \$1100.

E. ELSEN—Two-story frame dwelling on Skidmore, near Malloy; \$1000.

MRS. CARRIE MEUSORFFER—Two two-story frame dwellings on East Second street, corner Glessan; \$1450 each.

F. H. AGNEW—One-story frame dwelling on Rhine street, between East Ninth and East Tenth; \$1000.

N. M. SLOAN—Two-story frame dwelling on East Mill, between East Eighth and East Ninth; \$1500.

MRS. WALKER—Two-story frame dwelling on East Main street, between East Tenth and East Thirtieth; \$2500.

MRS. NEILL—Two-story frame dwelling on East Tenth street, between East Tenth and East Eleventh; \$1500.

MRS. A. MISNER—Two-story frame dwelling on Tillamook street, between East Tenth and East Eleventh; \$1500.

MRS. NEILL—Two-story frame dwelling on East Tenth street, between East Tenth and East Eleventh; \$1500.

MRS. NEILL—Two-story frame dwelling on East Tenth street, between East Tenth and East Eleventh; \$1500.

MRS. NEILL—Two-story frame dwelling on East Tenth street, between East Tenth and East Eleventh; \$1500.

MRS. NEILL—Two-story frame dwelling on East Tenth street, between East Tenth and East Eleventh; \$1500.

MRS. NEILL—Two-story frame dwelling on East Tenth street, between East Tenth and East Eleventh; \$1500.

MRS. NEILL—Two-story frame dwelling on East Tenth street, between East Tenth and East Eleventh; \$1500.

MRS. NEILL—Two-story frame dwelling on East Tenth street, between East Tenth and East Eleventh; \$1500.

MRS. NEILL—Two-story frame dwelling on East Tenth street, between East Tenth and East Eleventh; \$1500.

MRS. NEILL—Two-story frame dwelling on East Tenth street, between East Tenth and East Eleventh; \$1500.

MRS. NEILL—Two-story frame dwelling on East Tenth street, between East Tenth and East Eleventh; \$1500.

MRS. NEILL—Two-story frame dwelling on East Tenth street, between East Tenth and East Eleventh; \$1500.

MRS. NEILL—Two-story frame dwelling on East Tenth street, between East Tenth and East Eleventh; \$1500.

MRS. NEILL—Two-story frame dwelling on East Tenth street, between East Tenth and East Eleventh; \$1500.

MRS. NEILL—Two-story frame dwelling on East Tenth street, between East Tenth and East Eleventh; \$1500.

MRS. NEILL—Two-story frame dwelling on East Tenth street, between East Tenth and East Eleventh; \$1500.

MRS. NEILL—Two-story frame dwelling on East Tenth street, between East Tenth and East Eleventh; \$1500.

MRS. NEILL—Two-story frame dwelling on East Tenth street, between East Tenth and East Eleventh; \$1500.

MRS. NEILL—Two-story frame dwelling on East Tenth street, between East Tenth and East Eleventh; \$1500.

MRS. NEILL—Two-story frame dwelling on East Tenth street, between East Tenth and East Eleventh; \$1500.

MRS. NEILL—Two-story frame dwelling on East Tenth street, between East Tenth and East Eleventh; \$1500.

MRS. NEILL—Two-story frame dwelling on East Tenth street, between East Tenth and East Eleventh; \$1500.

dwelling on East Taylor street, between East Thirty-eighth and East Thirtieth; \$1500.



RESIDENCE OF D. C. FREEMAN, ELEVENTH AND EAST ALDER STREETS.

second and Twenty-third streets; \$1000.

G. W. BEVER—One-story frame dwelling on Clinton street, between East Twenty-third and East Twenty-fourth; \$1400.

J. J. Fehrer—Two-story frame dwelling on East Tenth street, between East Tenth and East Eleventh; \$1750.

G. W. PRIEST—Two-story frame dwelling on East Tenth street, between East Tenth and East Eleventh; \$1500.

M. ANDERSON—One-story frame dwelling on Benton street, corner Hancock; \$1500.

W. E. CHELLIS—Two-story frame dwelling on East Thirty-fourth street, between Clinton and Taggart; \$1000.

L. HOBBS—Two-story frame dwelling on East Twenty-sixth street, corner Salmon; \$2000.

E. W. GODFREY—One-story frame dwelling on Fargo street, between Williams and Rodney avenue; \$1700.

D. SMOCK—One-story dwelling on East Eighth, between Prescott and Skidmore; \$1500.

FRED MATTHEWS—One-story frame dwelling on East Thirty-third street, about 100 feet east of East Tenth; \$1500.

CHRIS WINZENT—One and one-half-story frame dwelling on Vancouver avenue, between East Tenth and East Eleventh; \$1500.

W. A. KIRKPATRICK—Two-story frame dwelling on DeFaux street, corner Hood; \$2000.

ELNORA DIEL—One-story frame dwelling on Cherry street, about 200 feet east from Franklin; \$1000.

ADAM OLSEN—One and one-half-story frame dwelling on East Tenth street, between Olsen and Frankfort; \$1500.

MRS. LOUISA PARTLOW—Two-story frame dwelling on East Tenth street, between East Tenth and East Eleventh; \$1500.

W. A. KIRKPATRICK—Two-story frame dwelling on DeFaux street, corner Hood; \$2000.

ELNORA DIEL—One-story frame dwelling on Cherry street, about 200 feet east from Franklin; \$1000.

ADAM OLSEN—One and one-half-story frame dwelling on East Tenth street, between Olsen and Frankfort; \$1500.

MRS. LOUISA PARTLOW—Two-story frame dwelling on East Tenth street, between East Tenth and East Eleventh; \$1500.

W. A. KIRKPATRICK—Two-story frame dwelling on DeFaux street, corner Hood; \$2000.

ELNORA DIEL—One-story frame dwelling on Cherry street, about 200 feet east from Franklin; \$1000.

ADAM OLSEN—One and one-half-story frame dwelling on East Tenth street, between Olsen and Frankfort; \$1500.

MRS. LOUISA PARTLOW—Two-story frame dwelling on East Tenth street, between East Tenth and East Eleventh; \$1500.

W. A. KIRKPATRICK—Two-story frame dwelling on DeFaux street, corner Hood; \$2000.

ELNORA DIEL—One-story frame dwelling on Cherry street, about 200 feet east from Franklin; \$1000.

ADAM OLSEN—One and one-half-story frame dwelling on East Tenth street, between Olsen and Frankfort; \$1500.

MRS. LOUISA PARTLOW—Two-story frame dwelling on East Tenth street, between East Tenth and East Eleventh; \$1500.

W. A. KIRKPATRICK—Two-story frame dwelling on DeFaux street, corner Hood; \$2000.

ELNORA DIEL—One-story frame dwelling on Cherry street, about 200 feet east from Franklin; \$1000.

ADAM OLSEN—One and one-half-story frame dwelling on East Tenth street, between Olsen and Frankfort; \$1500.

NEW RESIDENCE OF MRS. DOUGHERTY, SALMON AND NARTILLA STREETS.