



VOL. XXIV.

PORTLAND, OREGON, SUNDAY MORNING, JUNE 18, 1905.

NO. 25.

READ CAREFULLY THE MANY GREAT BARGAINS OFFERED FOR TOMORROW

## Lipman, Wolfe & Co.

**\$7.50 Plaited Walking Skirt \$5.48**

IN THE CLOAK STORE—100 fine Sicilian Walking Skirts in black, brown, navy and tan; made in the newest plaited effects with 50 side plaits, stitched at the top forming a V-shaped yoke. Regular \$7.50; a great bargain at **\$5.48**

**Tailored Shirtwaists Special \$1.25**

150 white Linette Shirtwaists, strictly tailor-made. The front has wide box plaits with large pearl buttons and 11 graduating fine plaits on each side. The back has double box plaits, full new leg-o'-mutton sleeves with tucked cuffs, and turned over laundered collar. Very special at **\$1.25**



### Linen Coats

Altman styles in Portland. Lipman, Wolfe & Co. are showing an exquisite gathering of fine Linen Coats, exclusive styles, direct from swellest Eastern makers; popular prices.

**\$4.50, \$6.50 to \$15**



### Linen Suits

New York and Paris are showing Linen Suits as the first favorites of fashion. Lipman, Wolfe & Co. are showing all the best New York and Imported Linen Suits, styles exclusively controlled by them in Portland; popular prices.

**\$7.50, \$8.50 to \$25**

**\$15.00 Covert Jackets \$10.00**

65 ladies' 22-inch tailor-made jackets, of finest quality tan covert cloth, made in the newest fly front shape, with notch collar. The front and back trimmed and stitched with cloth strapping; new full leg-o'-mutton sleeves with turned cuffs and all lined with tan satin. Regular price \$15.00; a great bargain at **\$10.00**

**\$25.00 Tailor-Made Suits \$12.75**

Tailor-made suits, all this season's correct styles, in jacket and blouse effects; made in plain broadcloths, chevots, Panama cloths and a variety of fancy mixed materials. The jackets are lined with silk and fancy trimmed. The skirts are plaited and trimmed. Regular prices \$25.00 to \$18.50; a great bargain at **\$12.75**

## Nemo and Smart Set Corset Demonstration

Tomorrow, Mrs. Craig, the expert fitter direct from the factory in New York City, is with us demonstrating the many good features and merits of "Nemo" and Smart Set Corsets, the only corsets that develop beauty lines as well as correct all defects in the figure.

Every lady should avail herself of this opportunity to be fitted by the celebrated corsetiere Mrs. Craig



**SELF-REDUCING**



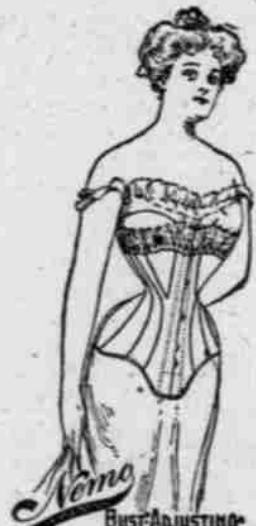
The Nemo self-reducing is the only Corset for stout women that positively reduces the abdomen, relieves those who are physically weak, gives a graceful figure and assures a perfect-fitting dress. Prices \$2.75, \$3.75, \$5.75.



The Smart Set is the latest and best product of American thought and inventive skill intelligently centered upon the needs of the well-dressed American woman of today. Prices \$5.50, \$7.50 to \$12.50.



The "Incurve" Waist. No other corset, no matter at what price can be compared with it in practical and health-giving features. Every fashionable woman should wear it. Prices \$1.00, \$1.50 to \$6.



Bust Adjusting. Adjusts bust low or high, producing long or short waists, graduated front steel gives excellent support below the waist. Price \$3.50.

## Lace and Embroidery Bargains

**35c Embroidery 15c**

IN THE EMBROIDERY STORE—5000 yards Embroidery, 2 to 6 inches wide, and insertions 1 to 2 inches wide; all this season's newest designs; regular prices 35c to 25c, a great bargain at **15c**

**50c Embroidery 25c**

4500 yards Embroidery, 3 to 9 inches wide, insertions 1 1/2 to 3 inches wide, Corset Cover Embroidery 14 inches wide, a large variety to select from; regular price 65c to 40c, a great bargain at **25c**

**\$1.00 Embroidery 47c**

3500 yards Embroidery 10 to 12 inches wide, Corset Cover Embroidery 12 to 16 inches wide, and Flouncing 27 inches wide; this is the best Embroidery offering this season, all new goods; regular price \$1.50 to \$1.00, a great bargain at **47c**

**50c Chiffon 33c**

Chiffon, all silk 44 inches wide in white, cream, black including all new and staple shades; regular price 50c, a great bargain at **33c**

**35c to 25c Laces 15c**

Net Top Laces, 4 to 5 inches wide, for dress trimmings, ecru only; regular price 35c to 25c, a great bargain at **15c**

**75c to 50c Laces 25c**

Net Top Laces, 6 to 9 inches wide a large variety of the newest designs, ecru only; regular price 75c to 50c, a great bargain at **25c**

**25c Venise Galoon 9c**

Venise Galloons, 1 1/2 to 2 inches wide, ecru only; regular price 25c, a great bargain at **9c**

**12c Chambray 8c**

4500 YARDS Chambray Gingham, plain colors in blue, gray, red, green, brown and tan, extra good quality. Regular price 12 1/2c; a great bargain at **8c**

### All Our Lace Curtains at Bargain Prices

Irish Point, Battenberg Cable Nets, Brussels and Nottingham effects in White and Arabian.

Regular price \$1.50, at.....	<b>\$1.19</b>	Regular price \$5.00, at.....	<b>\$4.19</b>
Regular price \$2.00, at.....	<b>\$1.59</b>	Regular price \$6.00, at.....	<b>\$4.95</b>
Regular price \$3.00, at.....	<b>\$2.39</b>	Regular price \$6.50, at.....	<b>\$5.19</b>
Regular price \$3.50, at.....	<b>\$2.79</b>	Regular price \$7.50, at.....	<b>\$5.95</b>
Regular price \$4.00, at.....	<b>\$3.29</b>	Regular price \$10.00, at.....	<b>\$7.95</b>

## Lipman, Wolfe & Co.

## EXTRA! Lipman, Wolfe & Co.

### Druggist Sundry Sale

- See the demonstration of our famous Thespian Face Food. The greatest cream on the market. Per jar, 25c and **35c**
- Our entire stock of 50-cent Odors in bulk; per ounce, special **25c**
- \$1.49 Toilet Water, very special **98c**  
 \$1.00 Toilet Water, very special **75c**  
 75c Ultra Violette Water, special **35c**  
 Alma Kola Massage Cream, 50c; special **25c**  
 Cucumber Cream, 25c; special **15c**  
 Violet Deodorizing Powder, 25c; special **11c**  
 Witch Hazel Talcum, 15c; special **9c**  
 Sigma Almond Meal, 15c; special **9c**  
 Powder De Riz Face Powder, 25c; special **11c**  
 Dorin's Imported Face Powder, 50c; special **25c**  
 Carter's Hair Renewer, 60c; special **19c**  
 Splendid Grade Egg Shampoo, 25c; special **12c**  
 Superior Bay Rum, 25c; special **13c**  
 Japanese Cleaning Compound, 25c; special **19c**  
 1000 sheets Toilet Paper, 10c; special **5c**  
 800 sheets Toilet Paper, 5c; special **3c**  
 2000 bars of fine imported Italian Castile Soap. Regular, 45c; special **25c**  
 Large bar pure Glycerine Soap, warranted—Extra fine value **10c**  
 Large double cake fine pure Glycerine Soap; Special **8c**  
 Vestal Violette Soap, special 3 for **19c**  
 Snowberry Soap, 5c; special **3c**  
 Binder's Tar Soap, 15c; special **8c**  
 200 solid back Hair Brushes, 50c; special **35c**  
 500 fine grade Combs, 25c; special **19c**  
 Wright's Tooth Powder, 19c; special **9c**  
 Sigma Tooth Powder, 19c; special **11c**  
 Loonen's French Tooth Brushes, 35c; special **20c**  
 2000 Tooth Brushes, 15c; special **10c**  
 \$1.49 Bulb Syringes, special **98c**  
 68c Bulb Syringes, special **50c**  
 88c Bulb Syringes, special **65c**  
 39c Bulb Syringes, special **25c**  
 \$2.23 2-quart Fountain Syringe, special **78c**  
 3-quart Water Bottles, 69c; special **45c**  
 4-quart Water Bottles, 69c; special **49c**  
 3-quart Goodyear Bottle, \$1.39; special **59c**

### Jewelry Store

Graduated Bead Necklaces, the greatest and latest fashion fad, in topaz, coral, crystal, ruby sapphire; special at **35c**

### Souvenirs

The greatest assortment of Souvenir Spoons, Calendars, Cups, Fobs, Pin Trays, Hatpins, Badges, Match Boxes, Coins in Portland for less than you can buy elsewhere.

See the Demonstration of the Magic Hair Curler and Waver, simple, smooth and light as a feather, set **25c**

### Music Store

We have all the Trail and Exposition songs "of merit." Below you will find the "best of them all," and to introduce them we offer special for three days **15c**

My Old Oregon Home—big hit. On the Trail  
 Dear Old Portland. The Centennial March.  
 Sweet Rose of Oregon. Rose City March.  
 On the Willamette—"Immense." When We Meet on the Trail.  
 Miss Columbia.

And the biggest song ballad hit of the year at 15c special—I Never Loved Another Girl as I Love You.

### Victor Talking Machines



HIS MASTER'S VOICE. And 12 records of your own choice delivered at your home for **\$1.00**. Balance easy weekly payments.

### Belts for Wash Dresses

Tomorrow we show entirely new assortments of Linen and Embroidered Belts—six styles, very special at **25c**. Newest combinations at **29c**. And more elaborate Belts in Linen and Embroidery at, each, 50c, 75c, \$1.00 to **\$2.50**

## CHINESE PROBLEM A DIFFICULT ONE

How to Exclude Laborers and Admit Others—Is the Question.

### TRADE RETALIATION FELT

Secretary Taft's Declaration Indicates That President Intends to Relieve Chinese Merchants From Humiliation.

How to keep Chinese laborers out of the United States, yet to admit Chinese merchants, students, travelers, teachers and other intelligent subjects of the Celestial Empire, is a problem before the American Government, for on account of the harsh operation of the exclusion law, Chinese are about to shut out trade from this country, thus to retaliate on vendors of American goods, for humiliation of their countrymen.

In consequence, diplomacy between China and America has been strained for several months, and American traders are becoming alarmed. The uneasiness is felt in Portland commercial circles as much as anywhere on the Pacific Coast. Exporters of wheat, flour and lumber are raising a clamor for better treatment of high-grade Chinese.

**Aim of Exclusion Law.**  
 The policy of exclusion has become so firmly rooted in American public sentiment that few or no residents of Portland expect to see it displaced, but there is a widespread demand for amendment of the law so as to make access to this country easy for intelligent Chinese, especially of the commercial classes, and yet not let down the bars against coolie hordes.

This is the aim of Congress of April 27, 1904, and by the same act those laws were applied to the "island territory under the jurisdiction of the United States." Those laws prohibit Chinese immigration from such territory to the mainland of the United States. Exclusion from the Hawaiian and the Philippine Islands has incensed the Chinese against Americans still more.

**Chinese Diplomats Busy.**  
 Chinese diplomats have sought for better treatment of their countrymen through treaty negotiation, and to no avail. Last December they suffered to lapse a treaty which had been in force ten years, which provided that "the coming of Chinese laborers to the United States shall be absolutely prohibited," except that "the provisions of this convention shall not affect the right, at present enjoyed, of Chinese subjects, being students, teachers, merchants, or travelers for curiosity or pleasure, of coming to the United States and residing therein."

This treaty the Chinese government refused to renew, for the alleged reason that its terms were not lived up to in the exclusion laws and the immigration policy of the United States. By a treaty of April 27, 1904, the United States Government may "regulate, limit or suspend" the coming or residence of Chinese laborers, "but may not absolutely prohibit it"; however, the words last quoted have been amended by various exclusion laws, thereby adding to the indignation of the Chinese government, for it is held by that government that the exclusion laws, since expiration of the treaty of 1884, are in contravention of other treaty stipulations, conspicuously those stipulations in the treaty of 1884 whereby the United States is bound not to "absolutely prohibit" immigration of Chinese laborers.

**Coolie Labor Question.**  
 The Chinese government does not object to America's exclusion of coolie laborers; in fact, in 1884, that government made a treaty with this country conceding their exclusion. But because the United States has rigorously enforced exclusion and Chinese merchants have been subjected to severe treatment on account of the frauds practiced by their humble countrymen, to defeat the exclusion laws, the Chinese are incensed.

President Roosevelt is in favor of an amendment of the exclusion law, for the benefit of high-class Chinese, and Secretary of War Taft last Thursday denounced the operation of the law in strong terms, and declared that the Pacific Coast was prejudiced on the subject and was making unreasonable demands. Mr. Taft proclaimed that "justice and courtesy" should be extended "to a people from whom we are deriving and are likely to derive such immense benefit in the way of international trade." The Secretary said further:

"It is just that for the purpose of excluding or preventing perhaps 100 Chinese coolies from slipping into this country against the law, we should subject an equal number of Chinese merchants and students of high character to an examination of such an inquisitorial, humiliating, insulting, and physically uncomfortable character as to discourage altogether the coming of merchants and students."

**Asiatic Association Acts.**  
 Last week the matter was taken before the President by the American Asiatic Association, representing the cotton textile and the iron and steel trade of the United States. The association protested against such enforcement of the exclusion law as might hazard American trade in China. In its protest the association said: "The treatment accorded by the immigration officers of this Government to the exempt classes of Chinese visiting our country is more oppressive than either the letter or the spirit of the law requires. Moreover, the plainest principles of international conditions demand that the law shall be made more liberal, either by amendment or the negotiation of a new treaty or by both."  
 President Roosevelt promised to take the matter under consideration, and to do all he could to remedy the difficulty. The

(Continued on Page 13.)