

# COLORADO WILL BUILD AT FAIR

## State Commissioners Arrive With Plans for Exhibit and Building.

### ARIZONA ASKS TO GET IN

#### They Both Announce Change of Attitude Towards Portland's Exposition, and Are Awarded Space at Grounds.

A new attitude towards the Lewis and Clark Exposition on the part of Colorado and Arizona developed yesterday. During the forenoon the Colo-

in the family of commonwealths, may appear to advantage in the eyes of visitors from all parts of the civilized world. The time is short and prompt action is urged. All exhibits intended for the Fair should be in the hands of the Commissioners in Salt Lake no later than May 15. As far as possible, members of the commission or those placed in charge of particular departments will visit the headquarters of the state and explain in detail what is especially desired in the way of exhibits. In the meantime, the headquarters of the commission will be in the city and county building in Salt Lake, adjoining the office of the Governor. There all interested in the exhibit will be made welcome, and there will be found some one ready and willing to furnish information desired.

### LOW RATES FOR NORTHWEST

#### Special Schedule Decided Upon by O. R. & N. Railway Company.

The excursion bureau of the Lewis and Clark Exposition was advised yesterday of the issuance of a list of excursion rates by the O. R. & N. Co. The list is an attractive one, making unusually low rates from points throughout Oregon, Washington and Idaho. From Spokane a rate of \$10 is made and the rates from other points is on a corresponding basis. The schedule list, as submitted to C. H. McInnes, director of excursions, follows: Idaho—Wallace, \$10; Burke, \$10; Wardner, \$10; Harrison, \$10; Moscow, \$10; Lewiston, \$10. Washington—Spokane, \$10; Freeman, \$10; Rockford, \$10; Waverly, \$10; Fairfield, \$10; Latah, \$10; Okanogan, \$10; Thornton, \$10; St. John, \$10; Farmington, \$10; Garfield, \$10; Elberton, \$10; Pullman, \$10; Colfax,

# ALFALFA IN VALLEY

## Soil of the Willamette Is Favorable to Growth.

### DR. WITHCOMBE'S TESTS

#### Experiment Station at the State Agricultural College Demonstrates That It is a Successful Crop in Western Oregon.

That many parts of the Willamette Valley are suited to alfalfa growing has been demonstrated at the experiment station of the State Agricultural College at Corvallis. Three or four crops can be cut every year, aggregating as much as 15 tons of green forage or more an acre, or six tons or more of cured hay. Dr. James Withcombe, director of the station, was in the city yesterday, and said that alfalfa growing was sure to in-



# Photograph the Fair Buildings



EVERY moment of these clear Spring days is precious for camera work. Your own pictorial mementos of our beautiful Fair will be one of your most cherished possessions in years when the Exposition is but a memory. Pictures taken now will show detail clearer than any other time of year. We unreservedly recommend the Anseo Camera as the best for amateurs. That is the reason why we handle it. It's the lightest, simplest, with all of the practical up-to-date fittings.



## We Rent Cameras 25c a Day and Up

## No. 4 FOLDING POCKET ANSCO

Weights only 1 1/2 pounds—the lightest weight of any substantial camera. Fitted with the new back for focusing with films. Adjustable speed—down to 1-100 of a second. Speed plainly marked. Brilliant reversible Finder—just like a professional's camera—No ground glass. Instantaneous film unload—Instantaneous load—Can unload and load in broad daylight, without wasting time. So distinct an improvement that anyone using ordinary cameras will find the greatest satisfaction in this new equipment. Double Rapid Rectilinear Lenses, each lens tested by an expert before and after fitting. Winner Automatic Shutter, with Iris diaphragm. Tripod sockets for both vertical and horizontal pictures. Black Morocco leather, finest grade. Selected Mahogany and metal parts. 3 1/2 x 4 1/4 inches, \$13.00.

## SOUVENIR POSTCARDS

Aluminum, Half-Tone, Tinsel, Etc. Comic Burnt Leather Post Cards—hand work, in colors, varieties of patterns ... 25c

## MAY STATIONERY

Eaton Hurlburt Paperies—Latest Shapes. Some new shades are Gobelin, Oxford Gray, Swiss Taffeta, Alleen, Mousseline de Paris, Tintourin, Mull Chiffon.

## AGATE NOVELTIES

For the Desk. Penholders, Paper-Knives, \$1.50 down to 50c. Bookmarks—like cut ... 50c. Prescriptions called for and delivered. We accept Canadian money at par.

## Mayday Colors

In Sensitized Photo Cloth. Just ideal souvenirs to send East—Lusterine Cloth—wonderfully beautiful soft effects, per sheet 50c, 35c and 25c. Passy Tripods—They telescope, are metal, light, hardly larger than a Stogie.

## No. 3 Anseo Takes Pictures \$7.50

Special features of our No. 3 Anseo Camera are the high-grade Achromatic lens, great depth of focus, and the patented film chamber, found in no other make of camera. In the use of this film chamber it is almost impossible to experience light-struck films, and owing to its working construction the film is always kept in perfect tension. Our No. 3 Anseo is a rare combination of simplicity, durability and utility. It is fitted with two tripod sockets and glass view finders for taking pictures either vertically or horizontally on the plate. The covering qualities of this lens are perfect, cutting clear to the edge of the plate with the largest stop. It has the rapid safety shutter, which can be quickly set so as to take instantaneous or time exposures. It is covered with seal grain leather and has finely lacquered trimmings. Carefully attached is a leather handle—only \$7.50. No. 1 Anseo takes 3 1/2 x 3 1/2 pictures. \$5.00

## Non-Curling Films All Sizes

Just ideal souvenirs to send East—Lusterine Cloth—wonderfully beautiful soft effects, per sheet 50c, 35c and 25c. Passy Tripods—They telescope, are metal, light, hardly larger than a Stogie.

## Advertise the Fair by Printing

### Your Own Photo Postcards

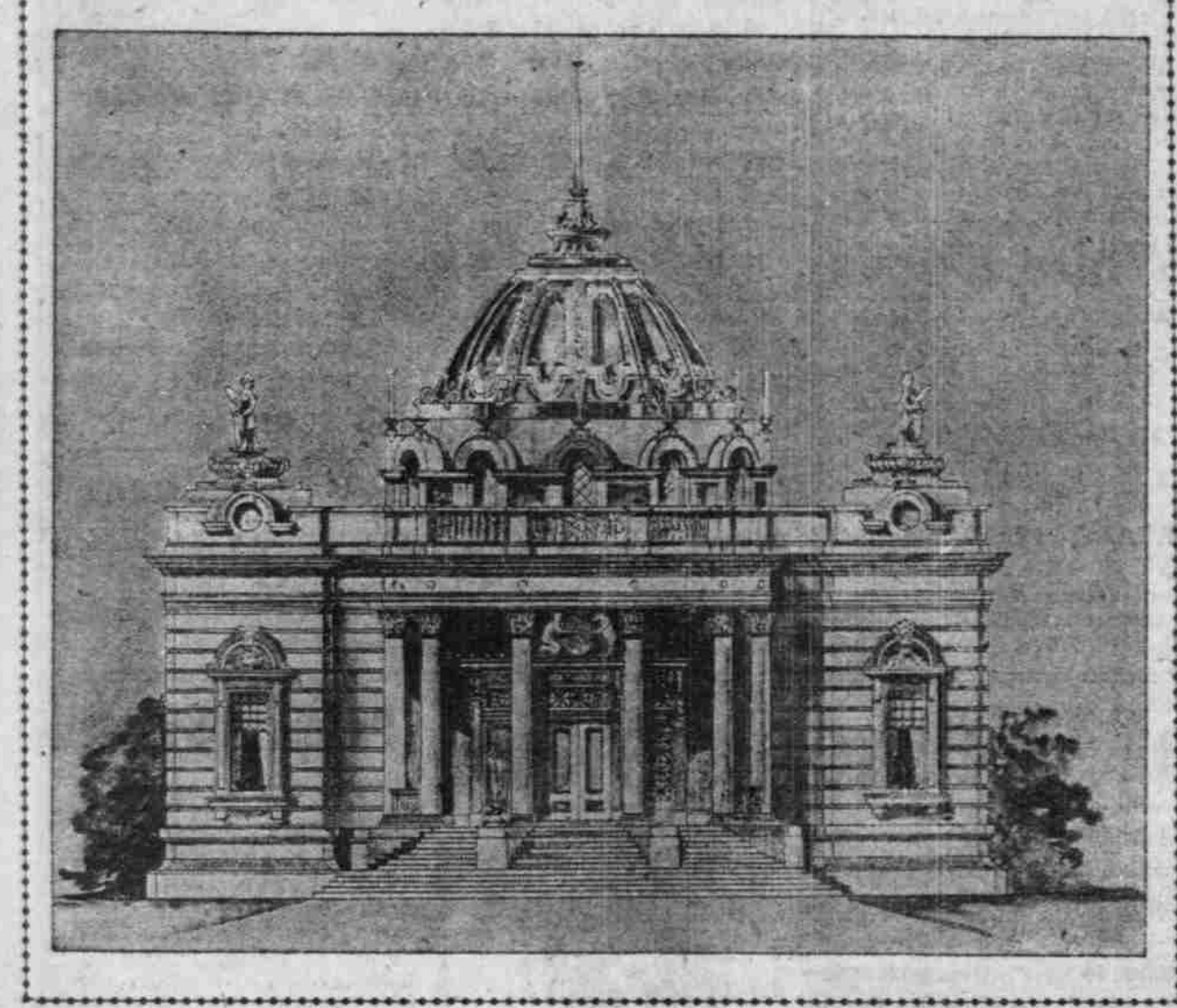
Cyko Post Cards—on sensitized paper. Ideal for printing pictures of the Fair buildings. About a cent apiece when bought in gross lots. PER GROSS \$1.50 PER DOZEN \$1.15

### Developing and Printing

Films of Fair buildings must be carefully handled to preserve the detail. We develop and print, our experts making a separate problem of each exposure, to get the best result there is in it. ...

# WOODARD, CLARKE & CO.

## MISSOURI BUILDING AT LEWIS AND CLARK EXPOSITION



rade State Commission arrived at the Exposition grounds from Denver with the announcement that it had been decided to erect a Colorado building. Later a telegram came from the Governor of Arizona, stating that the territory had changed its mind about not participating and was anxious to get in if there was any space to be had. The reply was sent that space would be provided in some way or other, and that Arizona was a welcome to the Fair as if she had been among the first to come in.

## London Gambles on Fair Attendance

### Count Barzloff Tells of Chance to Lay Wagers at a Fashionable English Exchange.

London is gambling on the probable attendance at the Lewis and Clark Exposition, according to Count Michael Michaelovich Barzloff, the Russian noble who is here to represent Casablanca at the Fair. In coming to Portland from his summer home in Carlsbad, Count Barzloff made short stays in Paris and in London. He was particularly interested in seeing the Portland Fair, marked on the boards of a fashionable London hotel. As this was his destination, he made inquiries and found that he could buy pools on the probable attendance.

## Tests at Station

The experiment station at Corvallis has practically demonstrated that alfalfa can be successfully grown in the Willamette Valley. We have been experimenting with it for five years, and find that profitable crops can be grown on heavy clay soil, without irrigation.

disc and other implements, but do not plow the land in the Spring, for alfalfa wants a fine but solid seed bed. After working the land down very fine it is a good plan to allow it to remain fallow for a week or ten days so as to permit the surface weed seeds to germinate. Then harrow thoroughly to destroy the small weeds, after which sow about 20 pounds of alfalfa seed with 25 or 30 pounds of a light harrow. After this all it will need for the first season will be to keep stock off and run a mow over it occasionally to subdue weeds.

## RAILWAY CONDUCTORS.

### Convention in Portland Will Bring Many Delegates Here.

The biennial convention of the Order of Railway Conductors to be held in this city, beginning May 2, will bring to Portland about 1400 or 1500 persons. There will be about 1000 delegates and alternates from the various divisions of the Order of Railway Conductors throughout the United States, Mexico and Canada, with their friends and families and about 400 delegates from the various lodges of the Ladies' Auxiliary Society, which will also convene here on the same date.

## THE CASCADE GARDENS

And COLONNADE Portland Exposition OF STATES at the Exposition grounds. The great scenic and mechanical production of the central attraction of the St. Louis World's Fair. Magnificent electrical illumination. Statuary, waterfalls, fountains, etc. "On the Trail" Adults, 25c. Children, 10c. For information address W. F. Williamson, Hamilton & Maple Av., St. Louis, Mo.

## UTAH COMMISSION ACTS.

### Strong Proclamation Issued Urging Support of Portland Fair.

Terse, to the point and stirring is the appeal which Governor John C. Cutler, of Utah, and his State Commission have issued to the people of Utah on behalf of the Lewis and Clark Exposition. Participation is urged and Utah's need of a full and successful exhibit is set out at length. The appeal or proclamation, which has been sent to every portion of the state, follows:

## Hurt by Falling Lumber.

Painfully injured by a tier of falling lumber, Charles Meyer lay unattended on a schooner at the mills of the Portland Lumber Company from 2 to 7 P. M. yesterday. The injured man then managed to call for help, and was taken to his room in the New York House, where medical aid was given. Meyer was loading lumber on the schooner, and was buried under, beneath a tier. He was not seriously hurt, but suffered much from lack of attention.

## Best Methods Outlined.

It is not a good plan to sow alfalfa with any other crop, unless the soil is rich and well suited to the growing of alfalfa. These so-called nurse crops are often a delusion and a snare. Some of the alfalfa seed which is evidently too acid for growing alfalfa, and some contain too much iron salts. Hence where there is a suspicion that either of these conditions prevail it is wise to experiment on a moderately small scale before sowing a large acreage. The experiment station, however, is experimenting with lime to determine the minimum amount required to correct this acidity.

## Physical Tests for Police.

Ninety-four candidates for positions on the police force took the Civil Service examinations yesterday, the chief portion of which was a written test and a 100-yard run. Fifteen seconds is the slowest time in which the 100 yards should be run, and those making the distance in more than that have 20 per cent taken from their credit, practically ruling out their chances. Most of the men running yesterday took from 14 to 16 seconds, though some ran as low as 12.

## Victimized by Old Game.

J. H. Duggan, employed in the foundry of the Willamette Iron Works, and residing at 183 North Eleventh street, called at police headquarters last night and told Captain Moore a tale about being victimized by a "big mit" man, who sold him a "solid gold" watch, with over 50 many jewels, warranted to keep perfect time for a century or more, for \$8. It was a

## Your Wife's Relations

Will all be here to see you during the Fair, and it's time for you to get a new buggy or have new rubber tires put on the old one. If you want a new buggy we have the finest line in town to select from and the lowest prices, quality considered. If you would have new tires, we have the freshest stock to be found anywhere. We get new, fresh stock every 30 to 60 days direct from the factory.



## The Blue Ribbon

For beauty and durability, is applicable to every Snell Bicycle. Perfect models in construction. The Mitchell Bicycles, none better for the money. Especially adapted to Oregon roads. Mitchell Heavy Tread Tires, the acme of tire construction. Portland Tough Tread, G. & J. Morgan & Wright, Hartford and all other standard makes of tires. Sundries and repairs.

## MITCHELL, LEWIS & STAYER CO.

Vehicles, Harness, Implements, Gasoline Engines. First and Taylor Streets - PORTLAND, OR.

## Will Present Great Spectacle.

Calvin S. Heilig, president of the com-