

Sunday Services in Portland Churches

Episopal.
Trinity Chapel, Nineteenth street and Washington, Dr. A. A. Morrison, rector—Held communion, 8 A. M.; morning service and sermon, 11 o'clock; evening service, 7:30 o'clock. During Dr. Morrison's absence, Rev. H. D. Chambers, general missionary, will be in charge.
St. Matthew's, corner First and Caruthers streets, Rev. W. A. M. Brock in charge—Services and sermon, 11 A. M.; Sunday school, 9:45 A. M.
Chapel of the Transfiguration, Sixth street, near Oak, Rev. W. R. Powell, chaplain—Services and sermon, 11 A. M.; Sunday school, 9:30 A. M.
St. Mark's, corner Nineteenth and Quimby streets, Rev. J. E. H. Simpson, pastor—Holy communion, 8 A. M.; Sunday school, 10 A. M.; morning prayer, 11 o'clock; evening prayer, 7:30 o'clock.

Congregational.
First Church, Park and Madison streets, Rev. E. L. House, D. D., pastor—Morning service with sermon on "That One of the World's Greatest Men," Thought of Christianity," 10:30 o'clock; evening service with sermon on "A Sure for Success," 7:45 o'clock; Sunday school, 12:15 P. M.; Rev. H. A. Start, superintendent; Y. P. S. C. E., 8:45 P. M. Choir: Mrs. Rose Bloch Bauer, Mrs. W. A. T. Bushong, W. H. Boyer, W. A. Montgomery; Prof. W. H. Boyer, director; Miss Leonora Fisher, organist.
Pilgrim Chapel, Second street, near Lincoln, Rev. H. A. Start, pastor—Sunday school, 9:30 A. M.; W. D. Scott, superintendent.

Baptist.
White Temple, corner Twelfth and Taylor streets, Rev. J. Whitcomb Brougher, D. D., pastor—One Accord prayer meeting, 10:15 A. M.; public worship, with preaching on "An Up-to-Date Bible School," 10:30 A. M.; Bible school rally, 12:10 P. M.; B. Y. P. U. service, 6:30 P. M.; service with preaching on "Popular Sports," 7:45 P. M.
Immanuel Baptist Church, corner Second and Meade streets, Rev. Meade M. Bledsoe, pastor—Services, 10:30 A. M. and 7:45 P. M. Song service, led by Mr. Charles H. Hart, singing evangelist, both morning and evening; Bible school, 12 M.; Young People's Society, 8:45 P. M.

Lutheran.
St. James' English, corner West Park and Jefferson streets, J. A. Lutz, pastor—Services, 11 A. M.; Sunday school, 10 A. M. In the evening the church will be occupied by the members of the Danish Lutheran Church.
Norwegian, 45 North Fourteenth street, Rev. J. M. Nergv, pastor—Services, 11 A. M. and 8 P. M.; Sunday school, 9:45 A. M.

Methodist Episcopal Society.
First, 17 1/2 Second street, Foresters' Hall—Sunday school, 10 A. M.; preaching by Bishop H. C. Morrison, of New Orleans, 11 A. M. and 8 P. M.; Epworth League, 7 P. M. At the morning service a report of the year's work will be given.
Presbyterian.
Calvary, corner Eleventh and Clay streets, Rev. W. E. Gilbert, pastor—Services with sermon on "Is the World's Thought Moving Godward?" 10:30 A. M.; "Has God Made Revelation of Himself to Man?" 7:45 P. M. Choir: Quartet—Miss Lina Linehan, soprano and director; Miss Virginia Spencer, alto; M. L. Jones, tenor; George H. Street, baritone; Harold V. Milligan, organist.

Episcopal.
First, corner East Sixth and Belmont streets, Rev. George B. Van Waters, rector—Holy communion, 8 A. M.; Sunday school, 9:45 A. M.; morning prayer and sermon, 11 o'clock; evening prayer and sermon, 7:30 P. M.
Our Savior, Woodstock—Morning prayer and sermon, 11 o'clock; Sunday school, 10 A. M.; evening service and sermon, 7:45 P. M.
St. David's, East Twelfth and Belmont streets, Rev. George B. Van Waters, rector—Holy communion, 8 A. M.; Sunday school, 9:45 A. M.; morning prayer and sermon, 11 o'clock; evening prayer and sermon, 7:30 P. M.

Christian.
First, corner Park and Columbia streets, E. S. Mackley, pastor—Morning service with sermon on "The Beatitudes, a Moving Picture of the Soul's Progress Toward God," 10:30 o'clock; evening service with antiphonal service and short address on "The Philosophy of Pralse," 7:45 o'clock; Christian Endeavor, 8:45 P. M.

People's Christian Union.
People's Christian Union, 162 Second street, F. E. Coulter, minister—Services with sermon on "The Relation of Sin and Death to the Spiritual Life," 11 A. M.; school of religion, topic, "The Reproof of Israel," 12:15 P. M.; instrumental concert by United orchestra, F. E. McCurdy, director, followed by lecture by the minister on "Transcendental Aesthetics," 7:15 P. M.
Y. M. C. A.
Auditorium, Fourth and Yamhill streets—Men's meeting, 8:30 P. M.; address by Colonel John Schiebke on "The Christian," violin solo by Miss Cornelia Barker.

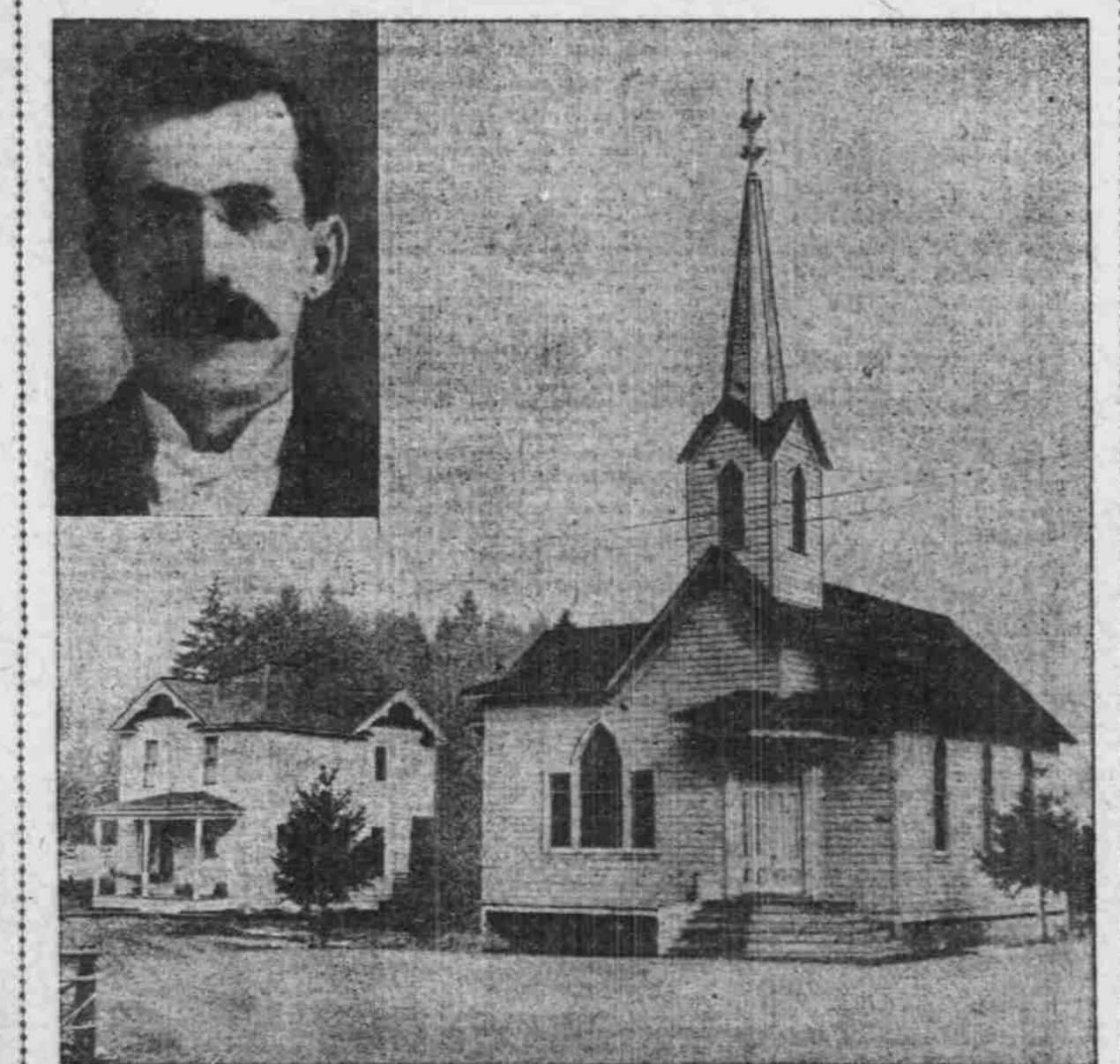
Episcopal.
Good Shepherd, Vancouver and Sellwood, Rev. John Dawson, rector—Holy communion, 8 A. M.; morning prayer and litany, 11 o'clock; evening prayer, 7:30 P. M.; Sunday school, 10 A. M.
St. John's Memorial, Sellwood, Rev. W. R. Powell, in charge—Sunday school, 11 A. M.; evening service and sermon, 7:45 P. M.
St. David's, East Twelfth and Belmont streets, Rev. George B. Van Waters, rector—Holy communion, 8 A. M.; Sunday school, 9:45 A. M.; morning prayer and sermon, 11 o'clock; evening prayer and sermon, 7:30 P. M.

Evangelical Association.
First, German, corner Tenth and Clay streets, Theo. Schauer, pastor—Sunday school, 10 A. M.; morning service and sermon, 11 o'clock; evening service and sermon, 7:30 o'clock; Christian Endeavor, 8:45 P. M.

Methodist Episcopal Society.
First, 17 1/2 Second street, Foresters' Hall—Sunday school, 10 A. M.; preaching by Bishop H. C. Morrison, of New Orleans, 11 A. M. and 8 P. M.; Epworth League, 7 P. M. At the morning service a report of the year's work will be given.
Presbyterian.
Calvary, corner Eleventh and Clay streets, Rev. W. E. Gilbert, pastor—Services with sermon on "Is the World's Thought Moving Godward?" 10:30 A. M.; "Has God Made Revelation of Himself to Man?" 7:45 P. M. Choir: Quartet—Miss Lina Linehan, soprano and director; Miss Virginia Spencer, alto; M. L. Jones, tenor; George H. Street, baritone; Harold V. Milligan, organist.

Episcopal.
First, corner East Sixth and Belmont streets, Rev. George B. Van Waters, rector—Holy communion, 8 A. M.; Sunday school, 9:45 A. M.; morning prayer and sermon, 11 o'clock; evening prayer and sermon, 7:30 P. M.
Our Savior, Woodstock—Morning prayer and sermon, 11 o'clock; Sunday school, 10 A. M.; evening service and sermon, 7:45 P. M.
St. David's, East Twelfth and Belmont streets, Rev. George B. Van Waters, rector—Holy communion, 8 A. M.; Sunday school, 9:45 A. M.; morning prayer and sermon, 11 o'clock; evening prayer and sermon, 7:30 P. M.

UNITED EVANGELICAL CHURCH AND MANSE AT ST. JOHNS WILL BE DEDICATED TODAY



REV. E. E. McVICKER, THE PASTOR, AND THE NEW CHURCH EDIFICES.
Dedicatory services of the new United Evangelical Church and Manse at St. Johns will be held Sunday morning at 11 o'clock. Rev. H. L. Pratt, presiding elder for the Portland District, will preach the dedicatory sermon. He will be assisted in the services by Rev. E. E. McVicker, the pastor, and other ministers. There will be several services during the day. At 10 A. M. Sunday school will be held and at 11 A. M. comes the dedication. At 2:30 P. M. there will be a Junior Young People's rally, and at 7 P. M. the Keystone League of Christian Endeavor will hold services, led by C. A. Staver, of Portland. At 8 P. M. Professor D. M. Metzger, of Dallas College, will preach. The church building formerly stood in Lower St. Johns. It was moved to Upper St. Johns and rebuilt and enlarged, and a handsome manse was erected alongside, the improvements representing about \$3000. At the services this evening the congregations of the First and Second Churches and the German Mission, of North Portland, will unite with the people of St. Johns in celebrating the completion of the new church edifices.



GRAND FALL OPENING

—AT—
Portland's Foremost Reliable Clothing Store
Come tomorrow. Everything is now ready for the comfort of Men and Boys. The swellest and best Suits, Hats, Overcoats, Cravenettes, Shoes, etc., we could gather in the Eastern markets for your comfort and enjoyment at prices that only two-store buying makes possible.

AN OUNCE OF INVESTIGATION IS WORTH A POUND OF CHEAP ARGUMENT : : :
Men's Swell \$12.50 Suits, Opening Sale Price \$10.00
All new stylish Fall Suits just opened in worsteds, tweeds, chevots and fancy mixtures, single and double breasted with good twilled linings, this week you can pick your size and pay just—
\$10.00
\$15 to \$25 Buys the Best Hand-tailored SUIT you ever wore!
FREE CLOTHES BRUSHES GIVEN WITH EVERY SUIT



Overcoat and Cravenette Sale
The very highest type of sartorial handiwork
The very exclusive custom tailor would admire these exquisite Overcoats, Surtouts, English Box Coats, Belt Coats, Dress and Traveling Coats and Cravenettes. All colors, all sizes in rich imported fabrics. Many lined with pure silk. Your choice this week \$15.00. That's all, \$15.00.

When Overweights go on trouble goes off.
Shoes of genuine distinction, equal in fit, appearance style and wear of any \$5.00 Shoe.
\$3.50
ANY STYLE
ANY LEATHER.
BOYS' SCHOOL SHOES
Of that rugged, durable kind that parents like. Strong soles, double-sewed vamps, as indestructible as shoes can be made. All styles.
\$1.25 to \$2.50 a pair



Boys Will Be Men and We Want Their Trade at All Stages
We have the best and most up-to-date Boys' Department in the city. Nothing we can say in print is equal to the argument which the clothing presents. Every conceivable material which will wear and look well is here in the new Fall showing at PLEASING PRICES.

Boys' Norfolk and Buster Brown Suits
In Chevots, Scotch Tweed, Worsteds and Fancy Mixtures. Sizes 4 to 15 years at —
\$3.00 to \$6.00
New Overcoats Galore
In all the popular makes and newest fabrics. Short Coats, \$3.50 to \$5.00; Long Coats for young men, \$6.00 to \$15.00.

To Our Mail Order Patrons
Cut this out, fill in blanks and inclose the price you want to pay, and see how well our suits fit you.
Black or mixed goods.....
Heavy or medium weight.....
Round or square-cut coat.....
Length of pants from crotch.....
Size around waist.....
Mr. Welch: Inclose please find \$ for which I enclose above. (Signed) _____
Town _____

MAN WANTS LITTLE
Here below. But he is particular about his wants so far as to the fitting of Shirts is concerned. See the finest collection of soft or stiff bosoms you ever saw of the famous Monarchs at \$1.00; Cuffs at \$1.50. Swellest collection of Ties in the city at 50¢ and 25¢.

Welch Hats
\$3.00
Any style that's proper you'll find in the Welch — and there's none better even at \$5.00. It is the hat which is in hat perfection.

Underwear Weather
Will soon be upon you. Prepare now with reliable underwear, the kind that keeps you warm, wear guaranteed, and do not shrink. Our prices are 25 per cent lower than other stores for the same quality of goods. Our prices, 50c, 75c, \$1.00 and \$1.50. But the prices won't prove anything unless you see the underwear.

WELCH The American Clothier 221-223 Morrison, Cor. First

of Oregon, to young people, 7:45 P. M.; Junior League, 4 P. M.; Epworth League, 8:30 P. M.; class meetings, 9:30 A. M. and 12:15 P. M.
Central, corner Russell and Kerby streets, Albert—Services with sermon by Rev. W. T. Kerr, 10:30 A. M.; services, 7:30 P. M.
Wesleyan, Center Addition, East Portland—Monteville on line—Series of meetings conducted by Evangelist Vernon, commencing at 7:30 P. M. today.

quarterly conference held last Thursday evening by D. Charlton, the assistant general passenger agent of the Northern Pacific, for the excursion to be run to North Yakima by the commercial bodies of Portland for the purpose of allowing the Portland business men an opportunity of visiting the North Yakima fair. Leave Portland Tuesday night, September 27, at 11:45 P. M.
Arrive Tacoma Wednesday morning 5:30 A. M.
Leave Tacoma 11:10 A. M. Wednesday, September 28.
Arrive Seattle Wednesday, September 28, 12:50 noon.
Leave Seattle Wednesday, September 28, 4 P. M.
Arrive North Yakima Wednesday, September 28, 11:17 P. M.
Thursday, September 29, Portland day at Yakima fair.
Leave North Yakima Friday, September 30, 6:45 A. M.
Attend Portland September 30, 7 P. M.
From the indications the attendance will be large, as many of the business men of the city have signified their intention of making the trip.

TWELVETHOUSANDPUPILS
NUMBER WHO WILL ATTEND THE PORTLAND SCHOOLS.
Remaining Buildings to Open This Week—Returning Crowds From Hopfields Will Fill Ranks.
With the tap of the gong at 9 o'clock tomorrow morning the schools of Portland will be in full swing with an attendance aggregating 12,000 pupils.
All of the buildings will be in readiness to accommodate the pupils, with the possible exception of the Alnsworth School. The Ladd School, which is popularly known as the Park, will utilize the temporary buildings owing to the orders of the School Board to allow sufficient time for the paint to dry. Otherwise the building will be ready for the placing of desks and the steady tramp of scholars to classrooms. Under the conditions it was deemed best to use the temporary houses erected after the fire until the paint is dry. Desks will be placed in position on Tuesday, and by Wednesday the paint will be sufficiently dry for the school to move into the new quarters.
At the close of the first school week of the Fall term, 10,323 pupils had been enrolled, with the Clinton Kelly, Portsmouth and Atkinson closed. Those three schools had an enrollment of 1655 pupils last year, but it is expected the attendance there will be greatly increased this year.
The attendance by schools on Friday was as follows: North Central, 651; Central, 902; Stephens, 457; Brooklyn, 275; Midway, 31; Sellwood, 294; Alnsworth, 48; East Twenty-eighth, 82; Woodlawn, 286; Peninsula, 81; Oakley Green, 129; Highland, 82; Thompson, 64; Albina Central, 171; Williams-Avenue, 675; Holladay, 768; Farwood, 15; Chapman, 483; Couch, 664; Harrison, 723; Felling, 338; South Portland, 24; Fulton, 53; Fulton Park, 78; Ainsworth, 106; Marquam, 12; High School, 88.

eight and ninth grades, Principal D. A. Groot, of Ladd School.
The "place of industrial education in schools" will be one of the leading topics for discussion. That is expected to bring out advanced ideas on manual training. Supplies have been ordered for the five stations in which manual training will be given, and it is expected that an active course will begin within two weeks. The time of starting will depend upon the arrival of the supplies and the fitting up of the rooms. Superintendent Rigler feels confident that two weeks will suffice to have the instructions under way.

Presbyterian.
First Cumberland, corner Twelfth and East Taylor streets, Rev. E. Nelson Allen, pastor—Sermon on "The Great Commandment," 10:30 A. M.; Sunday school, 10 M.; Junior Endeavor, 9:30 P. M.; Senior Endeavor, 8:30 P. M.; preaching services, 7:30 P. M.
Lutheran.
Our Savior, Norwegian Synod, corner East Tenth and Oregon streets, O. Hagvoe, pastor—Services, 7:30 P. M. (no morning services); Sunday school, 10:30 A. M.; Ladies' Aid Society, Thursday; Catechumens do not meet this week.
Christian.
Central, East Twentieth and Salmon streets—Sermon on "Beginning at Jerusalem," 10:30 A. M.; sermon on "Soul Winners," illustrated songs, 7:45 P. M.; Sunday school, 12 M.; Junior Endeavor, 5 P. M.; Senior Endeavor, 8:45 P. M.

TO VISIT NORTH YAKIMA FAIR
Schedule Prepared for Excursion of Portland Business Men.
The following schedule has been arranged by D. Charlton, the assistant general passenger agent of the Northern Pacific, for the excursion to be run to North Yakima by the commercial bodies of Portland for the purpose of allowing the Portland business men an opportunity of visiting the North Yakima fair. Leave Portland Tuesday night, September 27, at 11:45 P. M.
Arrive Tacoma Wednesday morning 5:30 A. M.
Leave Tacoma 11:10 A. M. Wednesday, September 28.
Arrive Seattle Wednesday, September 28, 12:50 noon.
Leave Seattle Wednesday, September 28, 4 P. M.
Arrive North Yakima Wednesday, September 28, 11:17 P. M.
Thursday, September 29, Portland day at Yakima fair.
Leave North Yakima Friday, September 30, 6:45 A. M.
Attend Portland September 30, 7 P. M.
From the indications the attendance will be large, as many of the business men of the city have signified their intention of making the trip.

SLOT MACHINES PAID CASH.
Japanese Proprietor Who Permitted Policeman to Play is Fined.
T. Yamada, a Jap, was fined \$20 yesterday by Judge Hogue for running a nickel-in-the-slot machine on a cash basis. The machine's subject had allowed Special Officer Caswell to play the machine, not knowing his customer's official capacity. When Officer Caswell had won 40 cents worth of slugs, he asked the Jap to cash them, which was in court as evidence. The Jap, who was in court as evidence, too, was culpable, as the law makes playing a machine an offense as well as operating one. He moved the dismissal of the case on the grounds that the uncorroborated evidence of an accomplice could not be regarded as convincing. Judge Hogue pointed to the money machine, which was in court as evidence, and said it substantiated the officer's statements, inasmuch as the ownership of the machine was admitted by the defendant.
A fine of \$20 was then imposed, the Court saying that the lightness of the penalty imposed was due to the somewhat mitigating circumstances of the arrest.

WAR MAP AND ATLAS.
Japanese war map in colors, included in map of the world, showing each of the great nations and their possessions in separate colors; submarine cables including the line recently opened across the Indian Ocean, from Africa to Australia, and the new American and British lines across the Pacific; the international date line, and the distances between great ports. Commercial maps of each of the grand divisions, with railroads and principal cities emphasized. Map of the Philippine Islands, showing over 4000 miles of cables and telegraph lines recently constructed by the United States Government. Maps of Nicaragua and Panama Canals, and the islands about to be acquired from Denmark. Index with population according to latest official enumeration, embracing United States census of 1900; Germany, 1900; Great Britain, 1901; India, 1901, etc. Send postpaid to any address for 15 cents in stamps. Oregonian Publishing Company, Portland, Or.

United Evangelical.
United Evangelical, St. Johns, E. E. McVicker, pastor—Sunday school, 10 A. M.; dedication sermon, 11 A. M.; Junior League, 2:30 P. M.; K. L. C. E. Union services, First, Second and St. Johns Leagues, 7:15 P. M.; preaching, 8 P. M.; pulpit supplied by visiting ministers. Dedication services, Thursday, Friday and Saturday evenings of this week; pulpit supplied by visiting ministers.
First, corner Fargo and Kerby streets, Rev. J. Bowersox, pastor—Preaching on "From Suffering to Glory," 11 A. M.; no evening service; Sunday school, 10 A. M.

Living and Dead Yale Graduates.
NEW HAVEN, Conn., Sept. 17.—The triennial catalogue of Yale University, issued today, shows that there are 12,744 living graduates and 8,251 dead graduates of Yale, a total of 21,005. The gain in living graduates for the whole university during the three years is 1908, and 469 Yale graduates have died during that time.

MURINE EYE REMEDY.
A home cure for Eye troubles. Never fails to win friends for Use for infant and adult. Murine don't smart. Soothes Eye-pain.

Wants Same Pastor Again.
Trinity Methodist Church, under the pastorate of Rev. Harold Oberg, is now closing a very prosperous year. Excellent reports were presented to the fourth

LOW FRISCO STEAMER RATE.
Account the Sovereign Grand Lodge, I. O. O. F., at San Francisco, September 12, O. O. F. & N. will sell return-trip tickets by Steamer September 14 and 15 for \$25. Particulars of C. W. Stinger, city ticket agent, Third and Washington streets.

Wants Same Pastor Again.
Trinity Methodist Church, under the pastorate of Rev. Harold Oberg, is now closing a very prosperous year. Excellent reports were presented to the fourth

Wants Same Pastor Again.
Trinity Methodist Church, under the pastorate of Rev. Harold Oberg, is now closing a very prosperous year. Excellent reports were presented to the fourth