

MINERALS OF OREGON

THEY WOULD MAKE FINE DISPLAY AT THE COMING FAIR.

Mr. Fisk Recommends That Committee on Mines Get to Work Early on Collection.

J. H. Fisk, the mineralogist, has made the following recommendation to C. B. Wade, David Rafferty and F. Williams, who compose the committee on mines and mining of the Lewis and Clark Exposition, in regard to an exhibit of Oregon minerals:

"In compliance with your request for such information as I may have relating to the various metal-bearing ores and minerals of commercial product for the Lewis and Clark Exposition and Mineral Exposition at St. Louis, 1904, and the necessary collection for the same, I beg to say that in addition to those various minerals mentioned in the circular sent me by David L. Day, geologist in charge of U. S. Geological Survey and chief in charge of the Mineral Department, St. Louis Exposition, which I filed with Secretary Reed, there are many other minerals in Oregon of a commercial importance, worthy and I

the phosphate of iron; it is pale blue in color; found in gray-wake both friable and crystalline; in beds of clay, often cavities of fossils; it is interesting to scientists and valuable only for phosphate.

"The platinum and stannic sands of Southern Oregon and the jade stones lately discovered in that section should not be overlooked.

"This list could be greatly extended, but it is sufficient to show what should be done in making the collection. No collection of this nature has ever yet been made, and as there is now an opportunity for doing so, and funds for the purpose, I can see no reason why it should not be accomplished, and when our 1904 Fair is over they will form a good nucleus for a State Museum.

"As for the St. Louis part of the collection, only three months of this year remain in which traveling in the mountains is feasible to make the collection.

"In order to insure success, I would recommend that a thousand letters be sent out at once to all parts of the State, soliciting information regarding the location of these minerals and commercial products, and invited co-operation in their collection, and not pack them out of the mountains until the last moment.

"I have on my desk a small pamphlet issued by the Illinois Central Railroad Company, entitled the 'Industrial Sites in Ten States.' A single page is devoted to each town, stating as follows:

"Population, county, date, city, date, assessed valuation of property, tax rate, death rate per annum, number of banks,

TENNIS SEASON IS OPEN

LADD CHALLENGE CUP WILL GO TO THE WINNER.

Good List of Entries and Several Handicaps Insure Close Contests—Finals Next Saturday.

The tennis season in Portland opens officially with the Spring Handicap Amateur Athletic Club. The tournament is to decide this year's winner of the Ladd Challenge Cup. This handsome silver cup was put up last year by J. Wesley Ladd, to be competed for in men's handicap singles and to become the permanent property of the player first winning it three times. J. F. Ewing won the tournament last year and is the first one to have the honor of having his name engraved upon the cup.

The tennis committee of the Multnomah Club, consisting of J. F. Ewing, chairman; M. C. Chas. and R. A. Ladd, met last night and arranged the following handicaps and drawing:

Letter, scratch, a bye, vs. Briggs, receive 15 3-6, a bye; McAlpin, receive 1-4, vs. Prince, receive 15, B. H. Wicker, sham, scratch, vs. J. C. Zan, receive 15;

NOW OPEN OUR NEW STORE

For Monday and Tuesday we are ready with the largest showing of medium and high-class goods it has been our pleasure to place before you, and the values—THEY ARE SIMPLY BEYOND COMPARISON. The housewife who seeks good homefurnishings runs no risk in coming here and pays absolutely the lowest prices. You can on no account afford to miss such bargains. THE VARIETY IS GREAT AND THE PRICES RIGHT.

UNDERWEAR SNAPS

Two hundred dozen manufacturer's samples, consisting of ladies' and misses' high-grade Summer underwear, all styles and sizes, on sale Monday at our Underwear Department at strictly

HALF PRICE

The early purchaser secures the choicest.

MANUFACTURER'S SAMPLES

PHENOMENAL HOSIERY SALE—500 dozen ladies' and children's hosiery, all the latest effects, bought at 50c on the dollar. To cause a sensation we will place them on sale tomorrow morning at strictly

COST PRICE

Hundreds of patterns to choose from. Come early and get best.

Dress Goods Reduced

SNOWFLAKE SUITINGS, all wool, 38 inches wide, in all desirable colors, suitable for unlined skirts, 65c values, Special Monday and Tuesday at, per yard..... 48c

SNOWFLAKE SUITINGS, in all shades, 48 inches wide, 90c values, Special Monday and Tuesday at, per yard..... 74c

NOVELTY SUITINGS, 36 inches wide, in all desirable colorings, suitable for children's dresses, 35c values, Special Monday and Tuesday at, per yard..... 24c

CHEVIOT SERGE SUITINGS, in blue and black, light weight, just the thing for bathing suits. We have one that will stand the salt-water test. These are all wool and 44 inches wide. Special Monday and Tuesday, per yard..... 50c

SICILIAN OR LUSTER CLOTH, with silk finish, jet black and cream colors, dust will not cling to it; washes as nice as muslin; just the thing for Summer suit or shirtwaist; 46 inches wide, Special Monday and Tuesday, per yard..... 50c

Ladies' Neckwear

Ladies' collars, with embroidered top, worth 25c, for..... 10c

Ladies' stock collars, with tabs, worth 35c, for..... 20c

Ladies' stock collars, with tabs, worth 75c, for..... 45c

Ladies' Pt. Venise applique collars, worth \$1.00, for..... 50c

BELT BUCKLES, oxidized, reduced from 25c to..... 15c

LADIES' SHELL BACK COMBS, reduced from 25c to..... 15c

LADIES' LISLE GLOVES, silk effects, reduced from 40c to..... 25c

Shoe Specials

\$2.50 Radcliffe Oxfords, \$1.98
The celebrated Radcliffe \$2.50 Oxford ties, for women, in kid and patent leathers, English welt sole, kid and patent tips. On sale Monday and Tuesday only at..... \$1.98

\$2.00 Girls' Shoes, \$1.58
Girls' "School" kid lace shoes, medium-heavy soles, of substantial wearing leather, kid and patent tips, regular \$2.00 values, Monday and Tuesday only at..... \$1.58

85c Child's Shoes, 69c
Child's kid lace and button shoes, hand-turn soles, patent tips, regular 85c qualities, sizes 4 to 8, Monday and Tuesday only, at..... 69c

Sizes 2 to 5, same quality, at..... 49c

Men's Wear

MEN'S FINE BALBRIGGAN UNDERWEAR, in cream color, shirts and drawers, 60c values, Special..... 35c

MEN'S BALBRIGGAN UNDERWEAR, in gray color, shirts and drawers, regular 35c values, Special..... 25c

MEN'S FANCY SOX, colored embroidered, and open work effects, at..... 25c

MEN'S SUSPENDERS, in light and dark color, good quality webbing, Special, per pair..... 25c

White Goods

TWO SPECIAL VALUES FOR THIS WEEK'S SELLING:

5 pieces white lawn, with lace stripes, fine sheer quality, suitable for children's dresses and waists, regular 12½c values, Special price..... 9c

4 pieces lace and satin-stripe lawns, all white, fine, soft, sheer quality. These are the best 20c quality ever shown. Special price..... 15c

Table Linens

TWO REMARKABLE VALUES FOR ONE WEEK ONLY:

200 yards bleached table damask, 58 inches wide, guaranteed all pure linen, our regular 60c grade, Special price..... 39c

60-inch bleached damask, extra heavy quality, every thread pure linen, newest patterns and borders, worth every cent of 75c yard, Special price..... 59c

Housefurnishings

If in need of house drapery, we can save you money.

5 dozen new tapestry table covers, two yards square, satin finish, reversible patterns and fringed, best \$1.25 values, Special price..... 98c

10 pieces of 36-inch art denims, all the wanted colors, newest patterns and reversible, heavy, firm quality, sold everywhere at 15c yard, Special price..... 12c

Wash Silks

Great opportunity to buy desirable silk cheap. About 500 yards best-quality imported wash silks, colors and styles are the very best, not a yard worth less than 50c. Special price this week..... 39c

200 yards black taffeta, all pure silk and 36 inches wide, excellent quality for petticoats or lining, worth \$1.25 yard, Special price..... 85c

Linings

Save money by buying your linings from us. Genuine spun glass lining, just as pretty as taffeta silk, and much more durable, over 35 different colors and black. Our price, per yard..... 20c

36-inch percale lining, colors drab and black only; fine, firm quality; our regular 12½c grade, Special price, per yard..... 10c

Corsets

Complete stock of R. & G. corsets. Girdles, in pink, blue, white and drab, made of good material and heavily boned. Special price..... 39c

R. & G. deep hip corsets, black, drab and white, best value ever shown, popular model. Our price..... \$1.00

R. & G. corsets are today the leading corset with particular people.

Muslin Underwear

We are now prepared to show you a large assortment of nice muslin garments at low prices.

5 dozen muslin gowns, yoke and cuffs trimmed with Swiss insertion and French lace, worth easily \$1.25 each. Our price..... 95c

25 dozen cambric corset covers, trimmed with lace, embroidery or hemstitched, Special price..... 25c

Extra good values in drawers, chemises, skirts, bustles and boys' waists.

Petticoats

It will pay you to see our petticoats before buying.

10 dozen new petticoats, made of fine black mercerized sateen, two ruffles on deep flounce. Special price..... 95c

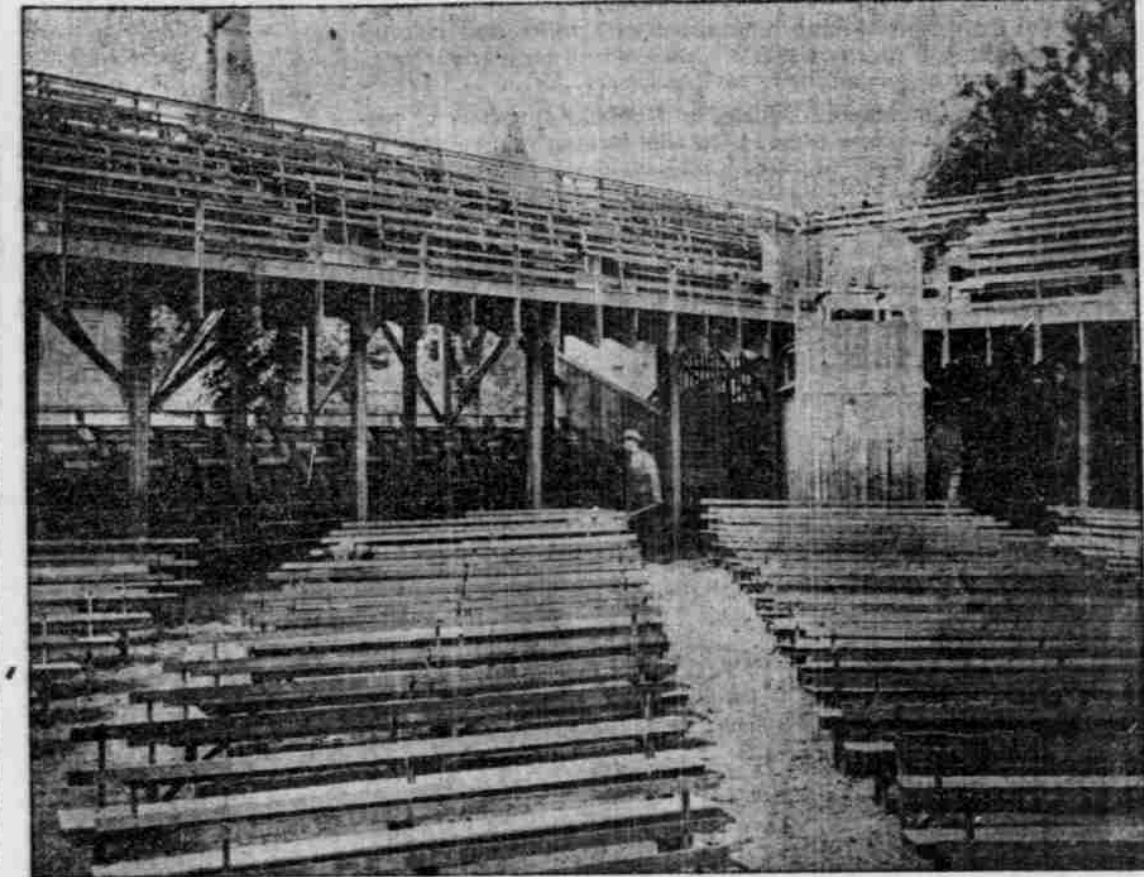
5 dozen black moire petticoats, ruffles and bands on deep flounce, nicely finished throughout, excellent values at \$1.65, Special price..... \$1.25

Dress Skirts

Large stock, stylish goods, lowest prices. Walking skirts, made of all-wool homespun, flared, tailor seams, perfect fitting, nicely finished, good values at \$5.00. ALL COLORS. Special price..... \$3.90

Ladies' dress skirts, made of all-wool chevrot, colors black and navy blue, trimmed with one-inch taffeta silk, Special price..... \$4.90

Good values in shirtwaists, suits, children's hats, infants' caps, children's dresses, wrappers, jackets and capes.



INTERIOR OF SHIELDS PARK.

think desirable for collection and display. "The carbonates, magnesites, franklinites, ilmenites and chromites of iron ores will attract great attention from the great iron workers of the world, and these alone are worth more for exhibition than all our gold ore and should be carefully arranged and properly labeled.

"The cements, lime, gypsum, clays and coals come next and should be carefully selected. The wealth and fertility of our soil is produced by the phosphates, of which vivianite are the principal, and of which a good selection should be made.

"The borax and nitre beds of Harney County should be examined and collected for the exhibit. It is found in the loose in dried up pools and lakes and is crystallized in the sand.

"No. 1. Wolfenite, including malachites, ferro manganates and ferro tungstates are valuable ores, of which there are a great variety in Oregon, and extensively used in the arts.

"No. 2. Realgar, a red sulphide of arsenic. The lustre is resinous of orange yellow or red, often mistaken for cinnabar; is found in the Cascades and Coast Range; is valuable only for arsenic.

"No. 3. Spodumene is a whitish crystal which resembles logs of petrified wood, having a similar grain. It is found in pockets and mined in open cuts; frequently a pocket will be found containing several tons.

"No. 4. Bauxite is aluminum ore, a dark red, massive, might be taken for iron ore, but much lighter in weight; found on the Clackamas and on the Nehalem Rivers.

"No. 5. Shell marl, a clay filled with fine shells, found four miles west of Oakland and in many other places; valuable for the manufacture of cement.

"No. 6. Gypsum, a sulphate of lime, is found in many places in the Coast Range and Cascade Mountains; valuable for plaster of paris and land plaster.

"No. 7. Cobalt ore, of which there is a great variety; the sulphate of cobalt is pale steel gray, with blackish streaks; is found in Sumpter district.

"No. 8. Diatomaceous earth, or Diatomaceous earth, is whiter than chalk and much lighter in weight, is used for making soap, and in the manufacture of glass; is found in Umatilla, Crook, Wheeler and Wasco Counties and is interesting to microscopists.

"No. 9. Kaolin, massive, clay-like, feels greasy; color, white, grayish white, sometimes yellowish; a pure quality is used for making the finest porcelain; is found in Tillamook and Clatsop Counties.

"No. 10. Selenite, or talc, may be white, greenish white; there are several varieties; it has a greasy feeling. The best quality, gray or milk-white, is the French chalk; the gray colored is used for manufacturing slate pencils and cooking griddles; is found in Umatilla, Crook, Wheeler and Wasco Counties, and there is a purer quality up the Klamath River.

"No. 11. Uranium, or pitchblend, is found in veins with lead and silver in the yellow powder; in the rock looks like gum, a reddish or brownish color, resin-like, is used for painting upon porcelain; gives a fine orange color in the enamelling fire. It is the mineral from which radium is extracted, which is now astonishing the scientific world by its rays of light.

"No. 12. Cryolite, sodium fluoride; it fuses in the flame of a candle, sometimes called ice stone; white and yellowish in color; is used for the manufacture of porcelain-like glass. There are several varieties of it.

"No. 13. Fluorite, especially calcium fluorite, is interesting in color usually bright white with some shades of cream yellow, with beautiful beveled edge crystals in massive clusters and is used as a flux in reducing copper and other ores found in the Coast Counties. Fine samples have been brought me by H. Woodson, of Winlock, Wash.

"No. 14. Barite or heavy spar; very white and heavy; found in mineral veins; used for adulterating white lead, sometimes called Venice white. Barium carbonate or witherite is used for the manufacture of plate glass and the manufacture of best sugar.

"No. 15. Celestine, or strontium sulphate, is a flat, long and slender crystal; found in beds of sandstone or limestone; is used in the manufacture of fireworks; sulfate of strontium in chemistry.

"No. 16. Vivianite is a rich mineral of

capital invested in banks, railroad lines, churches, water works, industries desired, cost of fuel, cost of labor, educational establishments, and a short description or synopsis of each town.

"It seems to me that it would be a grand thing for the 1904 Fair also to have 20,000 or more for free distribution, and a small pamphlet gotten up in a similar way of all the mines that are opened. This can be put on a single page and the cost would be nominal and it would be a great way to advertise our State, but this is only a suggestion I make. Very respectfully yours, J. H. FISK."

DRUGGISTS TO CONVENE.

State Pharmaceutical Association Will Take Trip to The Dalles.

The Oregon State Pharmaceutical Association will hold its annual session Tuesday and Wednesday, June 23 and 24. A novel feature of the annual convention is the fact that nearly the whole session will be held on board the Bailey Gatzert. On Tuesday at 8:30 A. M. the delegates, accompanied by their wives, will leave for a trip to The Dalles and return. The druggists of Portland are extending this courtesy to the visiting delegates. There will be a banquet Tuesday night on arrival at The Dalles and Wednesday morning the return trip will be made, and by the time of the arrival in Portland all the business of the session will be completed. The officers of the association are as follows: President, V. H. Chastain, of Milton, Or.; secretary, A. W. Allen, Portland; treasurer, Fabian Byerly, Portland. The local committee on entertainment is composed of J. M. A. Laue, chairman; J. A. Clemenson, R. B. Knight and Fabian Byerly.

New Plumbing Board Meets.

The new plumbers' examining board met at the office of the Health Board yesterday to organize, as required by the law. City Attorney McNary was called in to interpret some of the plumbing laws, but beyond that no action was taken.

SHIELDS PARK TO OPEN

Popular Amusement Place Offers New Attractions.

The opening of Shields Park this even-



THE STAGE AT SHIELDS PARK.

Third and Morrison Sts.

Robert's Bros

Third and Morrison Sts.

ing will be one of the important events in the history of amusements in Portland. Last year the park demonstrated that open-air vaudeville in this city is a paying venture and the handsome Summer theater at Washington and Thirteenth streets has been practically rebuilt for the coming season. Great care has been exercised and a large sum of money expended to make the new park a pleasant place to spend a Summer's evening, and with the excellent attractions which the

management promises there should be no question as to its popularity. The entrance this year is, on the Thirteenth-street corner, and the beacon which heralds the attractions within may be seen for several blocks. There is a sub-legend painted on the wall which announces that it is "The Place Which Made Portland Famous," but no reference is made to the industry from which the catch line is paraphrased, for no drinks harder than lemonade will be permitted within the inclosure. This rule will be strictly enforced and insures the good order which will be maintained.

If you have the price tonight you may get past the venerable gatekeeper and into a spacious enclosure having a roomy stage at the northeast corner, bounded on three sides by an amphitheater, which will comfortably seat 300 people. The ground floor has been arranged on a gradual incline and the roomy balcony is a succession of 14-inch rises from the lowest to the topmost tier of seats. From any seat in the park one may have a good view of the stage, provided he be not blind or blindfolded. The seats are comfortable settees, they have even been called divans by those in authority, but they have good, high backs and one may sit through a performance without going home with that tired feeling that one reads about. The earth has been overlaid by a generous layer of decomposed granite and milled may wear slippers and keep her feet off the earth and suffer no inconvenience from mud. Stately trees overhang the loftiest seats in the balcony and one may sit amid the swaying branches and the rustling leaves, hear and see the young gentleman do a monologue stunt on the stage far below and miss not a word or facial expression.

Tucked away in a corner near the Washington-street exit is a refreshment booth where cool things to eat and drink will be sold at which the most temperate could not take exception. Speaking of exits there are plenty of means provided for emptying the place and one can take his choice of four wide gates in the final "get away." There is a mysterious subterranean tunnel which will greatly expedite handling the crowd as it can be reached by those in the balcony without jostling the crowd on the ground floor.

The park will be brilliantly illuminated by myriad electric lights and a powerful calcium of three lights, each 200 candle-power, will play upon the stage from a tower in the center of the park.

And the stage—that is the triumph of the whole ensemble. It is roomy, magnificently lighted and carefully furnished. Special scenery has been painted for it by Edward Flegg, scenic artist of Mo-

vickers' Chicago Theater, and none better was ever shown in an outdoor playhouse. The olio-drop and settings are positively great and if the talent does not enthrall amid such surroundings, they certainly will be "bad actors."

If there has been anything left undone it is not apparent, and if the over-exacting are not satisfied they will be hard to please indeed. Those who find anything missing to complete their creature comfort will have to "ask the man."

Examination for Policemen.

The Civil Service Commission yesterday held examinations at the Portland Business College for positions in the police

service. A number of applicants were on hand to answer the quizzes, and the commission will probably meet Monday to pass on the papers.

HOT FOR NORTH BEACH.

Popular Potter Goes Into Service Saturday, June 27. Already preparations are being made for big business at North (Long) Beach. The popular excursion steamer, the T. J. Potter, goes into service Saturday, June 27. If you have not enjoyed a trip on this side-wheeled beauty, do so this season. For rates and particulars inquire at O. R. & N. city ticket office, Third and Washington.

WE FILL MAIL ORDERS PUNCTUALLY.

SHANAHAN'S

THIRD, BETWEEN ALDER AND MORRISON

AN OFFER NEVER BEFORE EQUALED

"TIME-LIMIT SALE"

We will sell any of the goods displayed in our north window, comprising Picout Stripes, Etoiles, Galon de Sole, Dimities and Swisses, on the following terms:

UP TILL MONDAY NOON 5c yd
Twelve yards only to each customer

MONDAY AFTERNOON 7½c yd
No limit as to yardage

FOR BALANCE OF THE WEEK..... 10c yd

These goods are faithfully worth from 15c to 20c a yard. Good, honest value.

SHANAHAN'S, THIRD STREET. SHANAHAN'S, THIRD STREET.