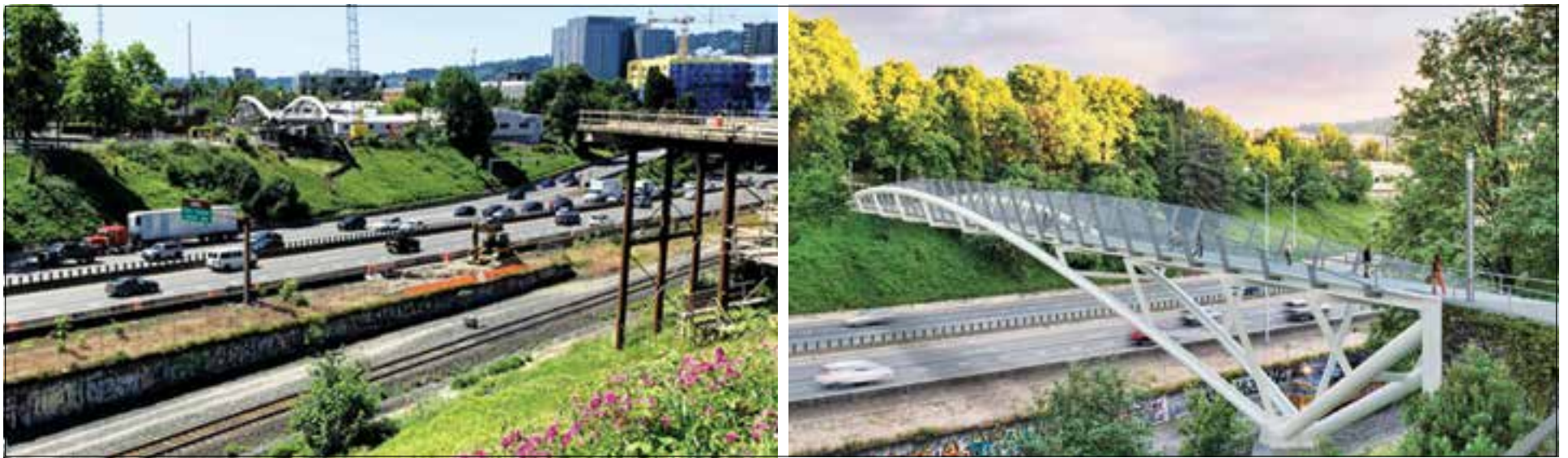


Bridge Installation to Close I-84



Two photos from ODOT show the Blumenauer Pedestrian and Bicycle Bridge worksite (left) and an artist rendering of the finished bridge.

Weekend work will impact freeway in both directions

After over a year of construction, a new pedestrian bridge over I-84, connecting the Lloyd District of northeast Portland with the

Central Eastside is ready for installation, work that will close both directions of the freeway over this coming weekend.

Both eastbound and westbound I-84 will be closed around the clock from 10 p.m. Friday, July 9 to 5 a.m. Monday, July 12. People driving should expect delays and use alternate routes or

ways of getting around, such as walking, biking, or taking transit.

Named the Congressman Earl Blumenauer Pedestrian and Bicycle Bridge for the Portland Democrat's long record of support for alternative methods of transportation, the approximately 800,000 pound and 400-foot-long bridge will be lifted and

rolled into place over Sullivan's Gulch at Northeast 7th Avenue.

The bridge will then be attached to a temporary tower between the I-84 freeway and railroad tracks, officials said. Following the initial bridge installation, crews will connect the bridge to the north landing. In the future it will also serve as an important

link for Portland's Green Loop.

When it opens in early 2022, the bridge will be seismically resilient and serve as a backup route for emergency vehicles over I-84 in the event of an earthquake. In addition to the bridge, the project includes two new public plazas and landings on the north and south sides of the bridge.



WE STILL MAKE OUR CLASSIC DISHES. BUT OUR FAVORITE NEW RECIPE MIGHT BE ONE FOR SAVING ENERGY.

Running a kitchen takes creativity and innovation. It takes using what you have in ways that might not be obvious. And that's the approach that Energy Trust of Oregon brought to reducing our energy costs. Whatever your tastes, savings are always delicious. Find out more at energytrust.org/existingbuildings.