

UNIVERSITY OF OREGON PRESENTS  
27TH ANNUAL  
**GOOD IN THE HOOD**  
MULTICULTURAL  
**MUSIC & FOOD FESTIVAL**  
JUNE 21 - 23 2019  
KING SCHOOL PARK  
NE 6TH AVE & HUMBOLDT ST. PORTLAND, OR 97211  
**FREE**  
THE FESTIVAL WILL INCLUDE A WEEKEND OF LIVE - JAZZ, BLUES, R+B, LATIN, POP, CONGOSAS HIPHOP AND R&B SOUL.  
HEADLINER  
*Angela Winbush*  
HOSTED BY  
SAM "SEEZNIN" THOMPSON + DJ PRYCE MIYAGI  
HOT TER COLD + ELLIOT YOUNG + ELLEN T JONES & A TOUCH BAND  
S GRAND BAND + VERSTE JEAN + NEKAEZ BONEZ DANCE TROUPE  
FUNK & FUSION + NORMAN SYLVESTER BAND  
SOUL VACCINATION + COOL BREZZE  
MONIEZ WRIGHT AND DESPERO  
MARKETPLACE,  
INFORMATIONAL VILLAGE,  
PARADE JUNE 22 | 11AM  
KIDS SPACE  
"KEEPING UNITY IN THE COMMUNITY"  
MORE INFO AT GOODINTHEHOOD.ORG



PHOTO COURTESY HODDICK PHOTOGRAPHY  
*'Equal Value, Different Shades'* is the title of Sherri Culver's creative quilt.

## 'On the Edge' Art Quilts

This summer, the Oregon Historical Society hosts an original exhibit of art quilts developed by local Studio Art Quilt Associates artists titled "On the Edge."

The group invited members to interpret, either in a representational or abstract way, a response to the theme of being on the edge, be it physically, geographically, emotionally, philosophically or in personality

quitting, will appreciate the original interpretations of the theme as well as the technical skill employed to design the works of art.

"The stellar quality of the works are a testament to the skill and creativity of the artists involved," said Karen Sunday Spencer, curator of the exhibit.

A two-gallery show, the exhibit is now showing through Aug. 15 at the Oregon Historical Society Museum at 1200 S.W. Park Ave.

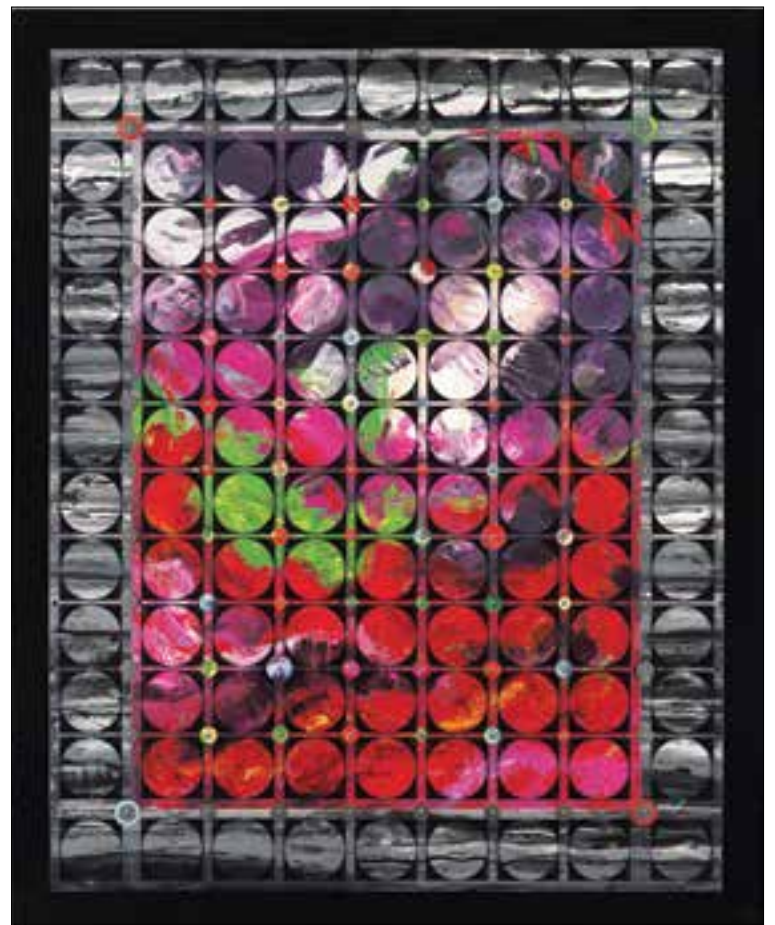


PHOTO COURTESY PUSHDON STUDIO  
A quilt by Judith Quinn Garnett is from a collection of art quilts made in Portland that are on display this summer at the Oregon Historical Society.

# 1480 KBMS

Take Us To Work, Home Or Play  
Listen Live At [Portlandmedium.com](http://Portlandmedium.com)  
(Click On KBMS icon)

MONDAY - FRIDAY	SUNDAY
12 Midnight - 3 A.M. MIKE SHANNON	12 Midnight - 3 A.M. MIKE SHANNON
3 A.M. - 7 A.M. TOM JOYNER	3 A.M. - 6 A.M. TOTA BEASLEY
7 A.M. - 10 A.M. TONI TERRELL	6 A.M. - 12 NOON SUNDAY MORNING / GOSPEL WANGELA
10 A.M. - 1 P.M. REV. AL SHARPTON (KEEPING IT REAL)	12 NOON - 1 P.M. HIGHLAND C.C. LIVE BROADCAST
1 P.M. - 3 P.M. KENNY SMOOV	1 P.M. - 4 P.M. PAPA SMURF
3 P.M. - 7 P.M. D.L. HUGHLEY	4 P.M. - 12 Midnight DOUGLAS WILLIAMS
7 P.M. - 9 P.M. PAPA SMURF	
9 P.M. - 12 Midnight MIKE SHANNON	




Rev. Al Sharpton  
10am - 1pm



Tom Joyner  
3am - 7am



D. L. Hughley  
3pm - 7pm



KBMS Radio  
1480 \* AM  
Portland's best music station