

CLASSIFIEDS/BIDS

Arts & ENTERTAINMENT

Tree Inspector

Salary: \$26.80 - \$33.16 Hourly

Closing: 11/9/2015 or 100 applications received

City of Portland, Oregon, Portland Parks & Recreation is recruiting for a Tree Inspector. Tree Inspectors play an integral role in carrying out the City's goals to protect, preserve, restore, and expand the urban forest. The position is of an advanced professional and technical scope in the evaluation and assessment of trees to enforce City tree code regulations. There is an optional information session, October 28, 2015, 6:00-7:00 pm. See complete announcement on our website for location.

For more details or to apply, please go to www.portlandoregon.gov/jobs.

SDC Program Manager

Salary: \$5,773.00 - \$7,708.00 Monthly

The Park System Development Charge (SDC) Program Manager is responsible for planning, implementing and evaluating the Portland Parks and Recreation SDC Program. The Parks SDC Program creates the methodology for fee collection on new development to provide capacity expansion of the City's Parks system.

Please view the full announcement and application instruction on www.portlandoregon.gov/jobs.

Office Support Specialist III

Salary: \$21.19 - \$28.08 Hourly

The City of Portland is recruiting for professionals who are interested in a rewarding career as an Office Support Specialist III. The OSS III is a professional-level administrative support position that performs highly specialized administrative, program-specific support work in a variety of programs and specialties. The OSS III may develop and design administrative policies and procedures with little direction, as well as implement special administrative support projects as directed.

To view the full announcement, please visit: www.portlandoregon.gov/jobs



Metro operates the Oregon Convention Center, Oregon Zoo, Portland's Centers for the Arts and Expo Center and provides transportation planning, recycling, natural area and other services to the region.

Visit www.oregonmetro.gov/jobs for current openings and a link to our online hiring center.

Metro is an Affirmative Action / Equal Opportunity Employer

Advertise with diversity in The Portland Observer
email ads@portlandobserver.com



Set-up and Operations Supervisor - Night Shift, Portland's Centers for the Arts, \$45,491 - \$65,963 annually. Deadline: 11/05/2015

These opportunities are open to First Opportunity Target Area (FOTA) residents - Columbia Blvd on the north; 42nd Ave on the east; the Banfield Freeway on the south, and North Chautauqua Blvd on the west, whose total annual income does not exceed \$25,000 as an individual, or \$40,000 for an entire household, for the past 12 months.

To apply: visit our web site at: www.oregonmetro.gov/jobs for the complete job announcement and a link to our online hiring center or visit our lobby kiosk at Metro, 600 NE Grand Ave, Portland.

Metro is an Affirmative Action / Equal Opportunity Employer

Housing Construction Coordinator

Salary: \$29.17 - \$38.67 Hourly

This Housing Construction Coordinator in the Portland Housing Bureau (PHB) is responsible for inspecting and evaluating single family, residential properties to determine construction and rehabilitation needs, including health, hazard, safety, habitability or code issues.

Working with various PHB home repair program including the Portland Lead Hazard Control Grant Program, this position monitors construction on behalf of the Bureau to assure projects meet schedule, budget, quality standards and funding requirements; facilitates the negotiation of construction contracts between applicants and contractors; and assists in educational and outreach efforts associated with programs including non-profit and government programs.

Please view the full announcement and application instruction on www.portlandoregon.gov/jobs.

Job Title:

Program Coordinator (Emergency Coordinator)

Closing Date/Time: Mon. 11/16/15 4:30 PM Pacific Time

Salary: \$5,496.00 - \$7,330.00 Monthly

Job Type: Full Time

The Emergency Coordinator will provide emergency preparedness, coordination, support and development services to the Bureau of Environmental Services. Responsibilities include: developing core activities and preparedness development plans; assisting the leadership team in developing and implementing annual reports, communication plans and presentations; inventorying, tracking and coordinating required and/or strategic emergency preparedness, response and recovery activities. To view full announcement visit: www.portlandoregon.gov/jobs.

Senior Consultant III sought by Neudesic, LLC in Portland, OR to work w/ some of the most recognized brands in the world to deliver compelling solutions that integrate disparate systems such as ERP, ERM, CRM, POS, Intelligent Devices, Cloud bus. solutions & social media data to name a few. Perform architectural design & development, w/ a focus on planning, deploying & supporting enterprise-level Bus. Intelligence & Big Data solution implementations. BS in CS, Comp Engg, or rel & 5 yrs exp req. Travel req: Periodic only, 10% maximum, w/in US borders. Mail resumes: Neudesic/Gwenevere Crary, 100 Spectrum Center Dr., Ste 1200, Irvine, CA 92618. REF. JOB CODE SP-01.

Advertise with diversity in The Portland Observer
Call 503-288-0033
email ads@portlandobserver.com



Adriene Cruz creates textiles with a passion for color and texture.

Textiles and Ceramics at Guardino

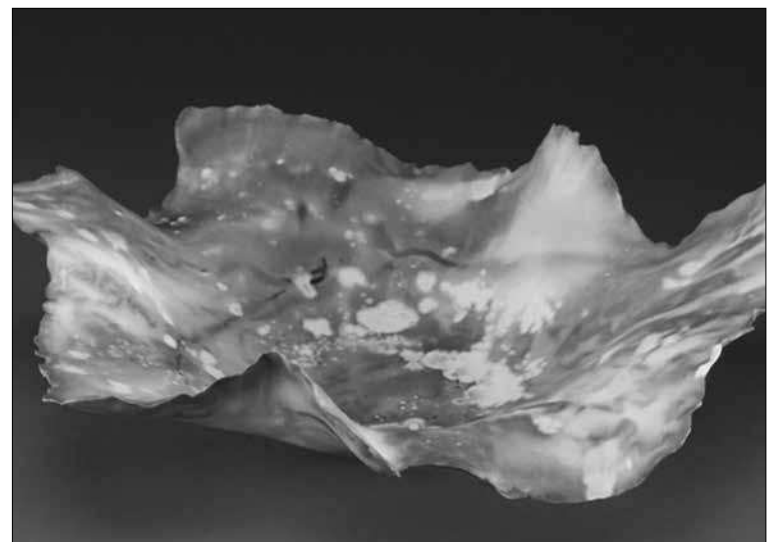


Guardino Gallery, 2939 N.E. Alberta St., begins a month long focus of works by three artists with an opening reception on Thursday, Oct. 29 from 6 p.m. to

9 p.m.

Adriene Cruz, a textile artist with a passion for color and texture, will be featured in the main gallery.

In the gallery's feature area will be works by Noah Starer, an artist who creates ceramics inspired by tribal bowls and vessels often seen in natural history museums; and Anne Mavor who creates paintings with layered watercolor washes on top of wax surfaces.



Ceramic works by Noah Starer are inspired by tribal bowls and vessels.