

The INSIDE

The Week in Review page 2

SPORTS page 4

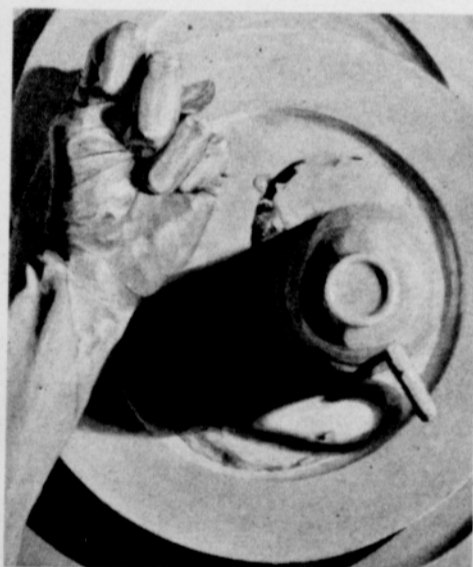
OPINION
 pages 6-7



ENTERTAINMENT GUIDE page 8



METRO page 9



Arts & ENTERTAINMENT

pages 10-13

CLASSIFIEDS page 14

CALENDAR page 15

FOOD
 page 16



This page Sponsored by: **Fred Meyer**

What's on your list today?

LOCAL NEWS

Frigid Cold Expected to Last

Portland area residents are bracing for some very cold weather.

Temperatures were expected to dip into the low 20s and high teens over the next few days with a chance of snow starting Thursday night and continuing with a chance of snow through the weekend. A frigid wind chill

is also expected over the Portland area for the next few days as the arctic front moved into the Pacific Northwest.

In response to the cold weather, an emergency shelter for youth, families and single adults will be available at Portland's Union Gospel Mis-

Located at 15 N.W. 3rd Ave., the shelter will open at 9:30 each night and close at 6 a.m. each morning.

Other seasonal shelters will be open as usual regardless of the temperature. For the location of shelters in the Portland area, dial 211 or visit 211info.org.

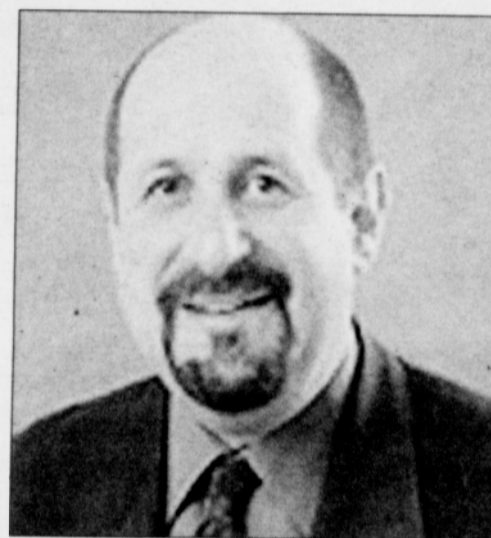
Cover Oregon Switches Executives

Insurance exchange enrolls first applicants

Cover Oregon announced Monday that it has enrolled 3,470 Oregonians in health insurance to date and are moving forward quickly to ensure that all completed applications received by Dec. 4 will be processed in time for coverage to start by Jan. 1.

Also Monday, Cover Oregon Executive Director Rocky King requested permission from the Board of Directors to take a three-month medical leave of absence effective Tuesday, due to issues related to a previously diagnosed medical condition. The Cover Oregon Board will begin conducting a swift search for an interim executive director through King's medical leave of absence. During that search, Dr. Bruce Goldberg will serve as acting Cover Oregon Executive Director.

"We are starting to see enrollments and are gaining mo-



Dr. Bruce Goldberg

"We are starting to see enrollments and are gaining momentum. I am confident we are on the right track to get people the health coverage they need."

— Executive Director Rocky King

mentum. I am confident we are on the right track to get people the health coverage they need. While our work is not done, I had to make the difficult decision to focus on my health now so that I can get

better. I know that the Board and Dr. Goldberg will keep things moving forward in my absence," said King.

Of the first 3,470 Oregonians enrolled through Cover Oregon, 219 Oregonians enrolled in a private plan and 3,251 enrolled in Oregon Health Plan. Cover Oregon has received in total more than 54,000 applications received so far and staff are working to get those applications processed as quickly as possible.

People eligible for private plans will receive an enrollment packet in the mail, with instructions on how to select a plan, and they need to return that packet no later than Dec. 15 for coverage effective Jan. 1, 2014. Those eligible for the Oregon Health Plan will be automatically enrolled in coverage.

There are many ways to get help completing an application or enrolling in a health insurance plan. Residents can go to CoverOregon.com and find a certified community partner or insurance agent or call 1-855-CoverOR. To date, Cover Oregon has received nearly 890,000 hits on the CoverOregon.com website and more than 50,000 calls to the service center.

Backpack Lunch Program Needs Help

The Northeast Backpack Lunch Program, which provides weekend meals for more than 150 needy children at Woodlawn, Scott and King schools, seeks turkeys and hams to donate to the families of these children for the holidays.

Now in its fifth year, the program puts two lunches in the backpacks of children at risk of hunger every week of the year to ensure they will

have something to eat on Saturdays and Sundays.

During December, the group wants to add to the gift. If you are interested in donating a turkey or ham, or would like to make a cash contribution, please contact Alan Silver at Fremont United Methodist Church, the sponsoring organization. The church's telephone number is 503-284-4647.