

# Honoring Women In Social Justice

Local women in the community were honored earlier this month for their work in social activism. The first annual NAACP Women of Honor Luncheon, held at Emmanuel Temple in north Portland, recognized eight individuals for their roles in a host of issues ranging from health, social justice, arts, politics, and more.

The theme of the event, hosted by Portland NAACP Unit 1120, was "Women of Honor Moving Forward in the 21st. Century." The honorees



Dignitaries at the NAACP Women of Honor luncheon are (pictured from left) Marcie Jackson, Dr. Audrey L. Terrell, Vera Pool, Minister Wilma Hills, Mariah Taylor, Margaret Carter, Mattie Wells, and Dr. Yvette Alex-Assenoh.

included Marcie Jackson, Mariah Taylor, Kate Lore, Avel Gordly, Mari Wantanabe, Mother Mattie Wells,

Vera Pool, Linda Hornbuckle, and Margaret Carter. Vice President for Equity and

Inclusion at University of Oregon, Dr. Yvette Alex-Assenoh, keynoted the event.

For more information on the work of NAACP branch, visit [portlandnaacp.wordpress.com](http://portlandnaacp.wordpress.com).



Young people enrolled in Portland YouthBuilders learn skills for vocational careers.

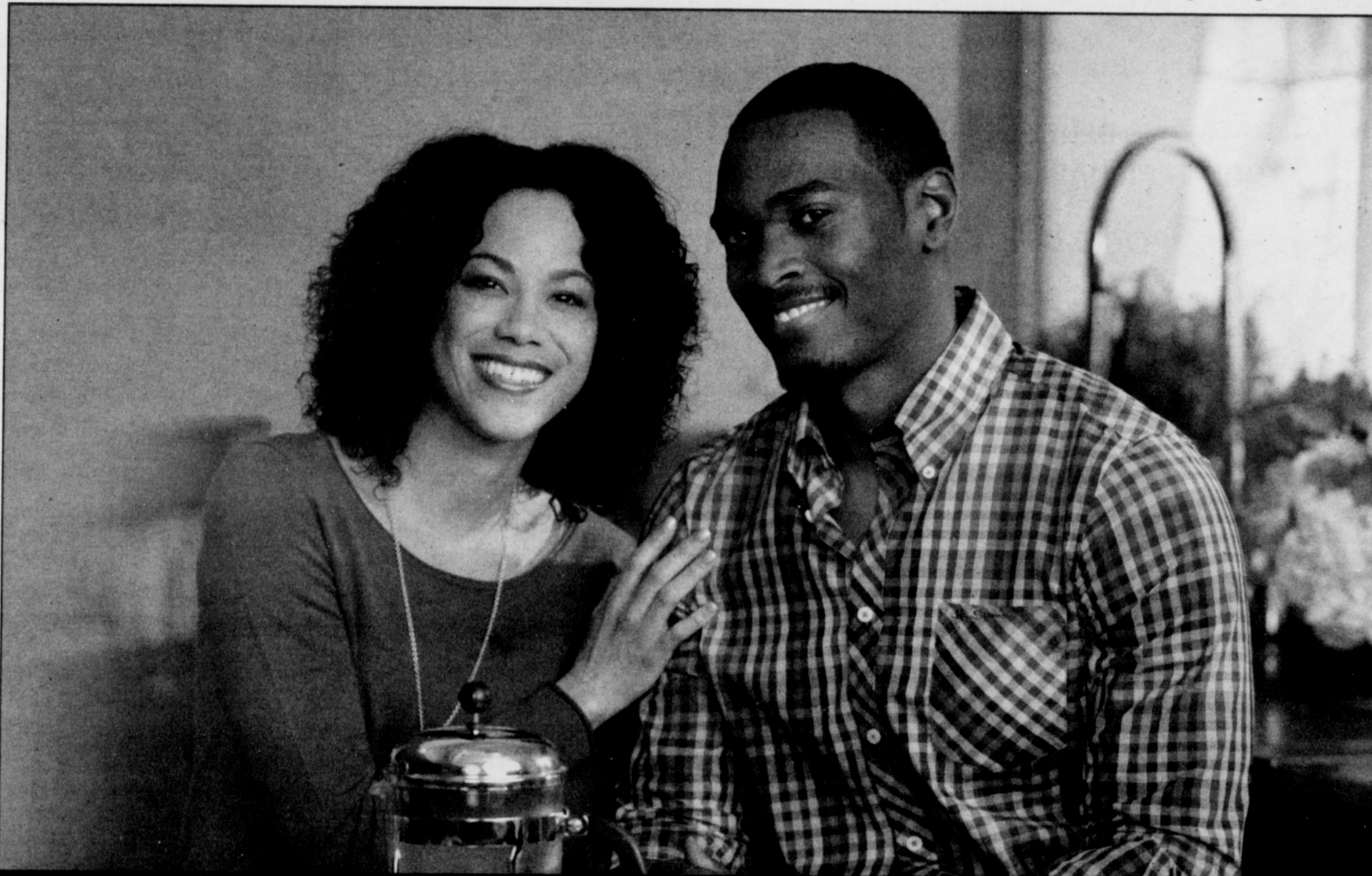
## YouthBuilders Enrollment Opens

Portland YouthBuilders has begun its winter enrollment drive for low income young people between the ages of 17 and 24 who have dropped out of high school. The enrollment period continues through early-December with the first day of class scheduled for Jan. 6.

Interested young people can call Thurston Spicer, admissions and student support coordinator, at 503-286-9350 extension 254 or come to a free, no obligation 90 minute information session every Thursday at 3:30p.m. at the YouthBuilders school at 4816 S.E. 92nd Ave.

The 16-month program offers a supportive academic learning environment; high school diploma or GED; hands-on vocational training in construction or computer technology; placement in college, apprenticeship, and employment; long term support to secure a stable career pathway; a drug-free environment; and a monthly financial stipend.

The school is accredited by the Northwest Accreditation Commission as a diploma-granting high school, and is an approved pre-apprenticeship program by the Oregon Bureau of Labor and Industries.



At this rate, your dream kitchen can be a reality.

Home Equity Line of Credit

**1.99%** APR<sup>1</sup>

Introductory Rate for 6 Months  
Rate available 09/09/13-11/10/13  
Rates are subject to change

Rates As Low As

**3.99%** APR<sup>1</sup>

Variable Rate after Introductory Period

Get a great rate on a Home Equity Line of Credit.

With rates still at an all-time low, now is the time to make those home improvements you've been thinking about. U.S. Bank is offering a Home Equity Line of Credit at a great rate with no closing costs.<sup>2</sup> Not to mention potential tax advantages,<sup>3</sup> great service and convenient branch locations. Start adding value to your home today.

All of **us** serving you®

EST. 1863

**usbank**

branch [usbank.com/lowrate](http://usbank.com/lowrate) 800.209.BANK (2265)

1. 1.99% Introductory Annual Percentage Rate (APR) is available on Equiline Home Equity Lines of Credit with a 70% or 80% loan-to-value (LTV) or less, depending upon the market. The introductory interest rate will be fixed at 1.99% during the six month introductory period. A higher introductory rate may apply for an LTV above 70%. Offer is available for new applications submitted from September 9, 2013 to November 10, 2013. Existing customers are eligible with at least a \$20,000 increase in balance and commitment amount. After the six month introductory period: the APR is variable and is based upon an index plus a margin. The APR will vary with Prime Rate (the index) as published in the Wall Street Journal. As of September 1, 2013, the variable rate for home equity lines of credit ranged from 3.99% APR to 8.99% APR. Higher rates may apply for a credit limit below \$125,000 (depending upon the market), an LTV above 70% or 80% (depending upon the market), a low credit score and/or not having a U.S. Bank personal Package Checking account. The rate will not vary above 25% APR, or applicable state law, or below 1.99% APR. An annual fee of up to \$90 may apply after the first year. Offer is subject to normal credit qualifications and program guidelines. Rates are subject to change without notice. 2. Property insurance is required. 3. Consult your tax advisor regarding the deductibility of interest. Other restrictions may apply. See the Consumer Pricing Information brochure for terms and conditions that apply to U.S. Bank Package Checking accounts. Home Equity Loans and Lines of Credit are offered through U.S. Bank National Association. ©2013 U.S. Bank. All rights reserved. Deposit products are offered through U.S. Bank National Association. Member FDIC.

