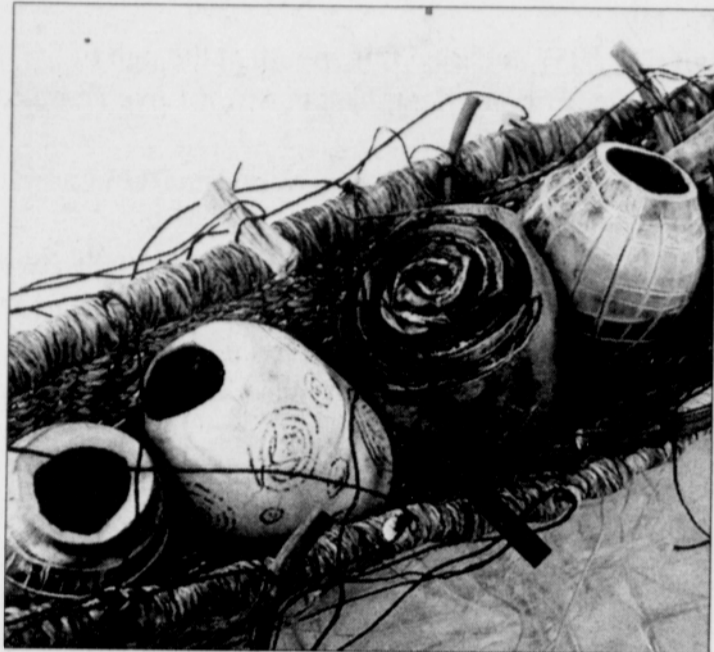
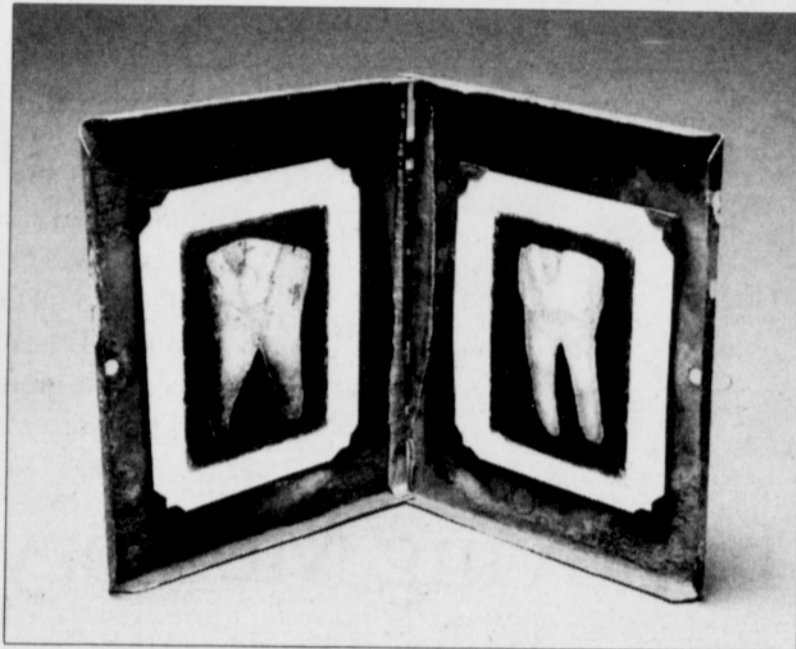


Arts & ENTERTAINMENT



Shannon Weber weaves found beach materials, including carved and sewn kelp.



Steve Winkenwerder uses drawing and mixed media techniques to create 'Two Teeth.'

September Show at Guardino

On
NE ALBERTA ST
Street

Guardino Gallery, 2939 N.E. Alberta St., features works by a variety of artists during September.

Shannon Weber's woven objects seem to carry unintentional reflections of amulets or talismans. She uses obscure materials from sea kelp, burned wood, rocks and roots, to local finds of forgotten rust along a roadway.

Steve Winkenwerder's latest work is a combination of drawing, collage, and assemblage.

Almost all the images and materials are found in the street or in dumpsters.

In Guardino's feature area, the artist Vonda combines reclaimed elements like paper, postcards, photos, wood and paint-by-number paintings to create pieces layered with new meanings.



Julian 'Cannonball' Adderley

PDX Jazz @ The Mission

The David Valdez Latin Jazz Ensemble kicks off the PDX Jazz @ The Mission Theater fall season on Thursday, Sept. 19 at 7 p.m. in a program dedicated to the "Latin Side of Cannonball Adderley." This special one-time performance will feature trumpeter Tom Barber, bassist Dave Captein, drummer Todd Strait, percussionist Mario Sandoval, and out front on alto sax, David Valdez.

The late Julian "Cannonball" Adderley was one of the most important alto saxophonists in jazz, and a musician who had a profound impact on my musical concept," said Valdez. "Adderley seemed to always

understand how to connect with audiences, this was due in part to his deep grounding in the blues. He brought an earthy bluesy approach to everything he played, which was a perfect balance to Coltrane's rarified improvisations with the Miles Davis Quintet of the late fifties."

Valdez has selected a vast body of Adderley's works including: "Stars Fell on Alabama," "Joyce's Samba," "Lolita," "Heads Up! Feet Down!," "Goodbye," "Minha Suadade," "Clouds," "Lisa," and "I Concentrate On You," among others.

Tickets \$15 in advance and at the door.

Chinese Harvest Moon Party

The FookLok/Hollywood Meals-On-Wheels People is hosting a Chinese Harvest Moon celebration with entertainment, a raffle and a special lunch on Monday, Sept. 23 from 11 a.m. to 1 p.m.

The community is invited to donate a ticket or a raffle prize for a senior. Volunteers are also needed to help with the event. The Meals-on-Wheels site is located at 1907 N.E. 45th Ave., inside and down the stairs at the Rose City Park Presbyterian Church.

Lunch tickets are \$3 for seniors over 60 and \$6.80 for residents under 60. For ticket purchases and more information, call Mary Gagnon at 503-281-8109.

Sunday Jam Comedy Night

Celebration Tabernacle, 8131 N. Denver Ave., hosts its 4th Sunday Jam Night Comedy Variety Show on Sunday, Sept. 22 at 7 p.m.

The free event is open to the community. Friends and families will enjoy a Saturday Night Live format with local recording and performing artists, including bands, dance crews, poets, and drama groups.

Celebration's sketch/improv comedy troupe Jam Night will also perform. Special Guests are Teleca Carlson (Christian/Gospel), Montrell Goss (young published author/poet), and First Infantry (Christian Rap).

BUSINESS Guide

Double J Tires

New & Used Tires

Overstock & Used Tires

\$20 & up PRICED TO SELL
All tires mounted & balanced on the car, out the door - no additives.

Free stock wheels w/ purchase of any new or used tire limited to stock on hand 30 years in business

2 locations to Serve You

6841 NE MLK, Portland
503-283-9437

4510 SE 52nd & Holgate
503-771-1834

State Farm®
Providing Insurance and Financial Services
Home Office, Bloomington, Illinois 61710

Ernest J. Hill, Jr.

Agent
4946 N. Vancouver Avenue, Portland, OR 97217
503 286 1103 Fax 503 286 1146
ernie.hill.h5mb@statefarm.com
24 Hour Good Neighbor Service®



\$5.00 TEES

CLUBS
FAMILY REUNIONS
SCHOOL CLUBS
BUSINESSES
SCREEN PRINTING

503-762-6042
971-570-8214



Peter Clarke
Real Estate Agent

Windermere
REAL ESTATE

Windermere Peninsula Realty
6110 N Lombard
Portland, OR 97203
(503) 333-5809
Fax (503) 283-6300
peter.clarke@windermere.com



AFFORDABLE

JJ
LOCK & KEY



FULL LOCKSMITH - SERVICE
RE-KEY AND INSTALL LOCKS

LOCKED OUT? - WE MAKE KEYS FROM SCRATCH

HOUSE, OFFICE OR CAR

503-284-9582

Serving Portland/Metro area (N, NE, SE, SW & NW)

Advertise with diversity in
The Portland Observer
BUSINESS GUIDE

Call 503-288-0033

ads@portlandobserver.com

YOU CALL, WE HAUL



Johnny Huff
(owner/operator)



Scrapping Metal & Landscape Maintenance

Home: (503) 284-0192
Cell: (503) 839-9461