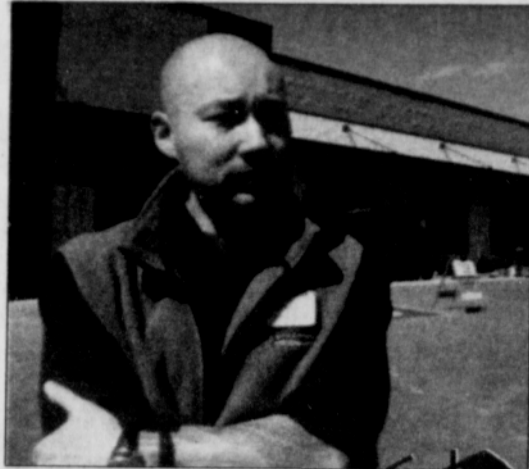


The
PO

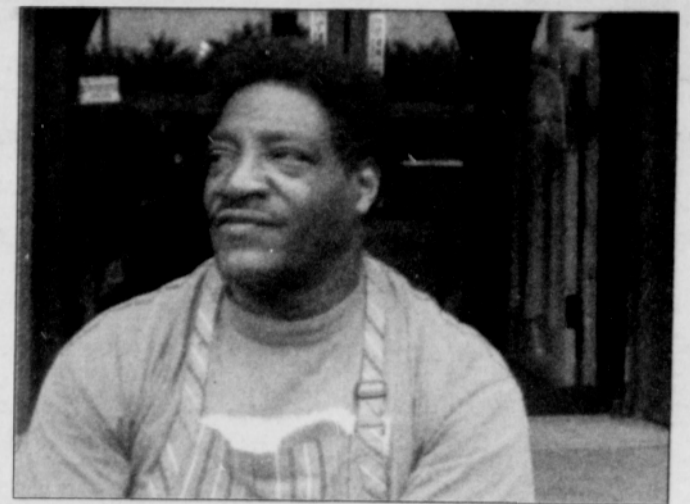
**Williams
Avenue Uplift**

*New Seasons
Market hosts a job
fair for new store*
See Local News, page 3



**Keeping the
Ribs Coming**

*Reo's gets a
good start at a
new location*
See Metro, page 9



The **Portland Observer** 43

'City of Roses'



Volume XLIII
Number 25



www.portlandobserver.com
Wednesday • June 26, 2013

Established in 1970
Committed to Cultural Diversity

years of
community service

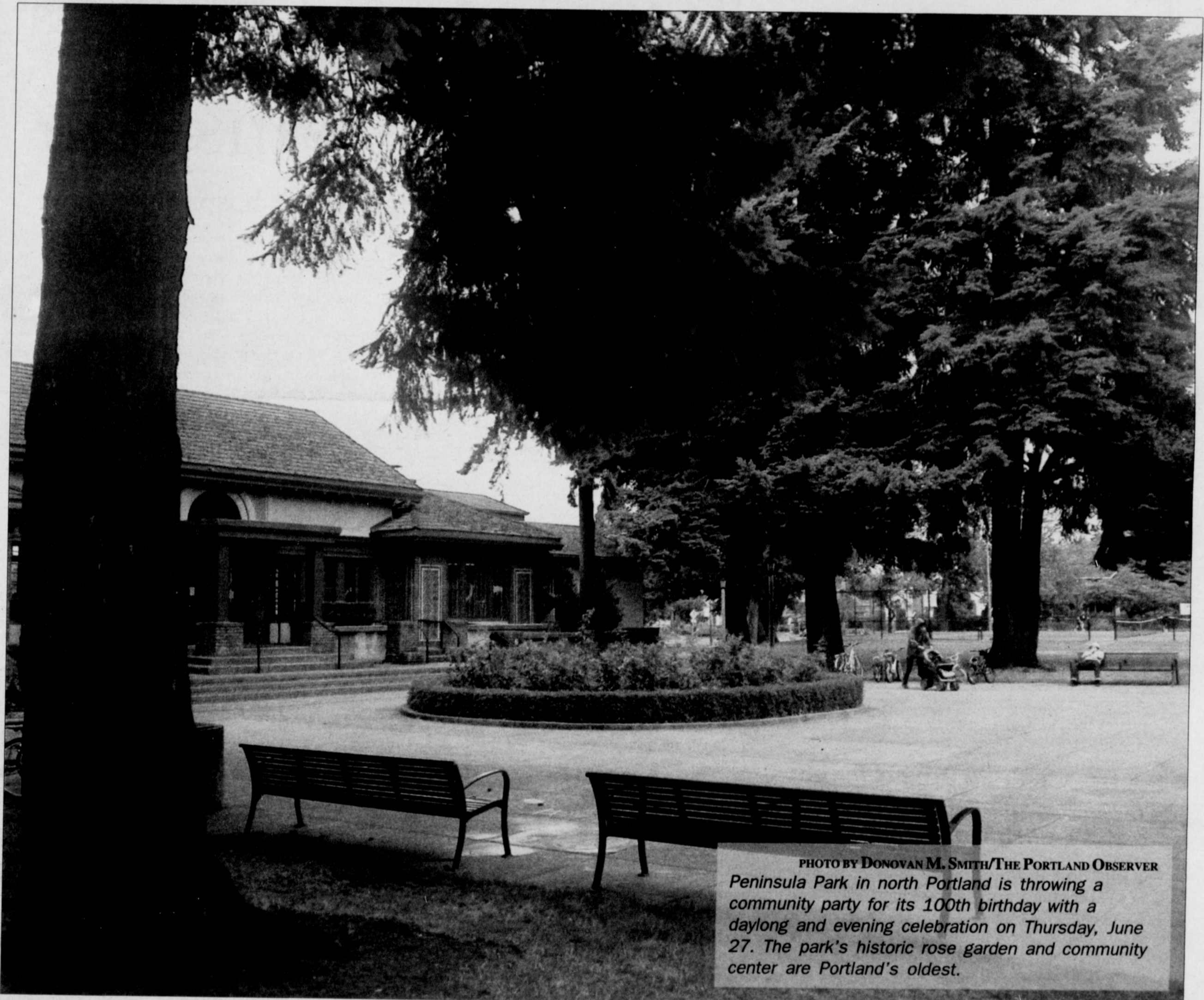


PHOTO BY DONOVAN M. SMITH/THE PORTLAND OBSERVER
Peninsula Park in north Portland is throwing a community party for its 100th birthday with a daylong and evening celebration on Thursday, June 27. The park's historic rose garden and community center are Portland's oldest.

A Party for a Showcase

Peninsula Park and Community Center celebrate 100 years

BY DONOVAN M. SMITH
THE PORTLAND OBSERVER

It's hard to find any longtime resident of Portland who doesn't have a memory of the historic north Portland centerpiece Penin-

sula Park, and on Thursday, June 27 a whole host of new memories will be made as folks from all around the city celebrate the park turning 100 years old.

Peninsula Park and Community Center,

located at North Albina Avenue and Ainsworth Street, was the first such facility in Portland's public parks system when it opened in 1913. The centennial celebration will bring a day and evening of family-friendly events

that will range from an ice-cream social, circus performances, rock climbing, and of course music, which will be provided by both Port-

continued ▼ on page 4