

Small Business Computer Support and Training

LB3 Computing Solutions



Don't get bogged down with too much technology! LB3 helps you select the technology you need and makes it easy for you to use with training and support tailored just for you.

Conveniently located in Portland, Oregon

We make it easy and affordable. You'll spend less time at your computer and more time with your customers.

Call or email us today · info@LB3ComputingSolutions.com

503.621.6368



Excellent Care  
Funeral Services

One Stop Funeral Center Now-Open...  
Get the best package in Portland for burial.  
Everything you need all in one building.

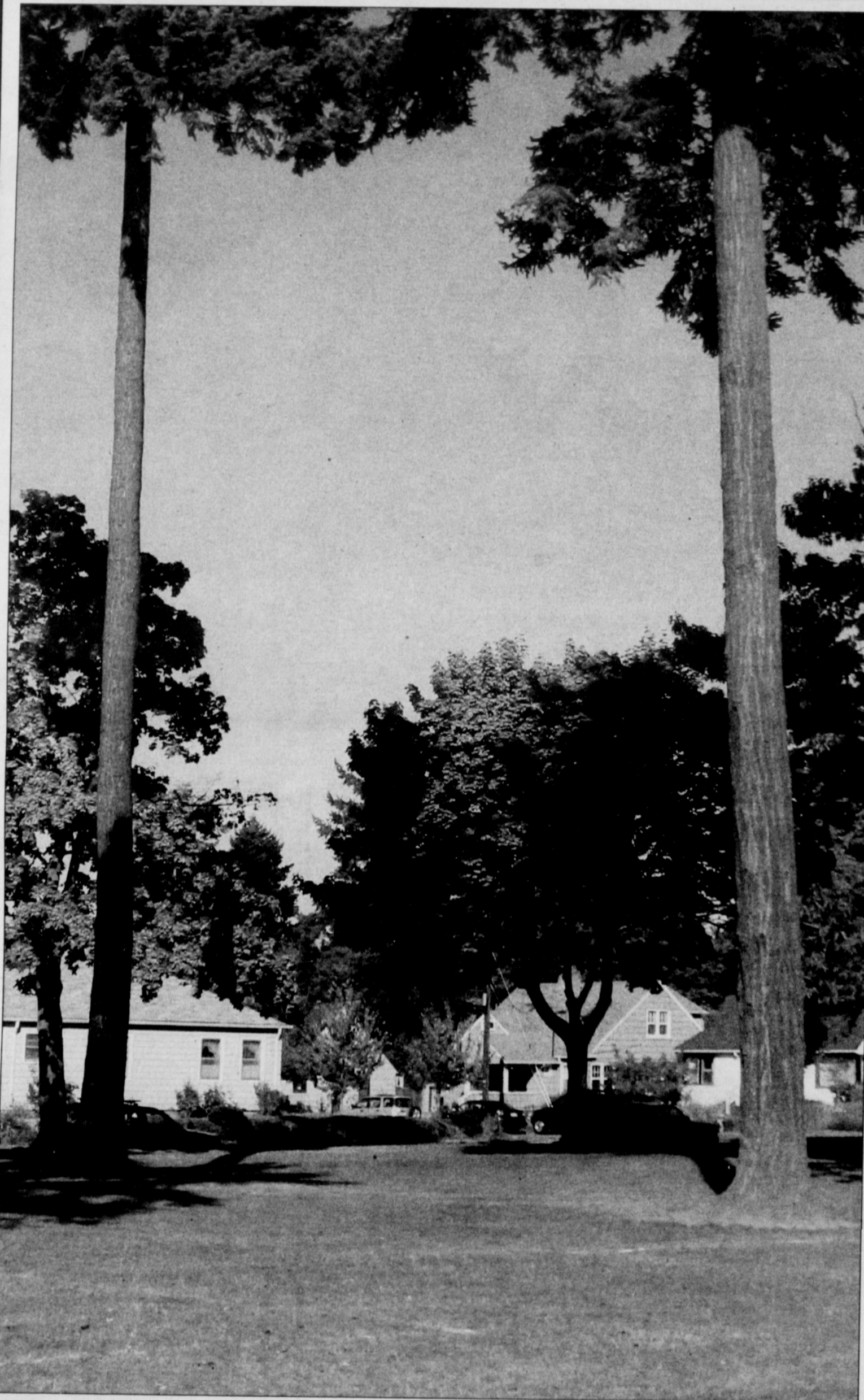
- Consultation
- Large Sanctuary and Balcony
- Embalming
- Cremation
- Viewing Service
- Provided Hearst upon request
- Minister
- Parking Available
- Limousine Service
- Large Kitchen

Location: 126 NE Alberta St.

On the corner of Mallory and Alberta  
2 blocks West of MLK, Jr., Blvd

Call now (971) 888-4024

Arts & ENTERTAINMENT



Wilshire Park in northeast Portland will benefit from a fundraiser at McMenemy's Kennedy School.

Dine Out for Wilshire Park

Wilshire Park enthusiasts will help raise donations for making improvements at the northeast Portland during a special night of dining at McMenemy's Kennedy School, Tuesday, May 14, 5 p.m. to closing.

The fundraiser also marks 100 years of public outreach by the sponsoring organization, the Alameda Tuesday Club.

"We hope everyone will join us on Tuesday,

May 14 for a great cause, a great community event and a great evening," said Sarah Chung, club president.

The Alameda Tuesday Club partners with the Portland Parks Foundation, Portland Parks and Recreation, the McMenemy brothers and Columbia Sportswear for the betterment of Wilshire Park and to benefit the Alameda Neighborhood and Portland community.



Sweet Street Food Cart

on the corner of MLK and Lombard  
call 503-995-6150 to place order

Monday - Friday, 11:00am - 7:00pm

Saturday - Sunday, 11:00am - 5:00pm

Wednesday Special: 3 Wings \$2.00

Friday Special: Rib Sandwich, Beef or Pork, \$4.00

