

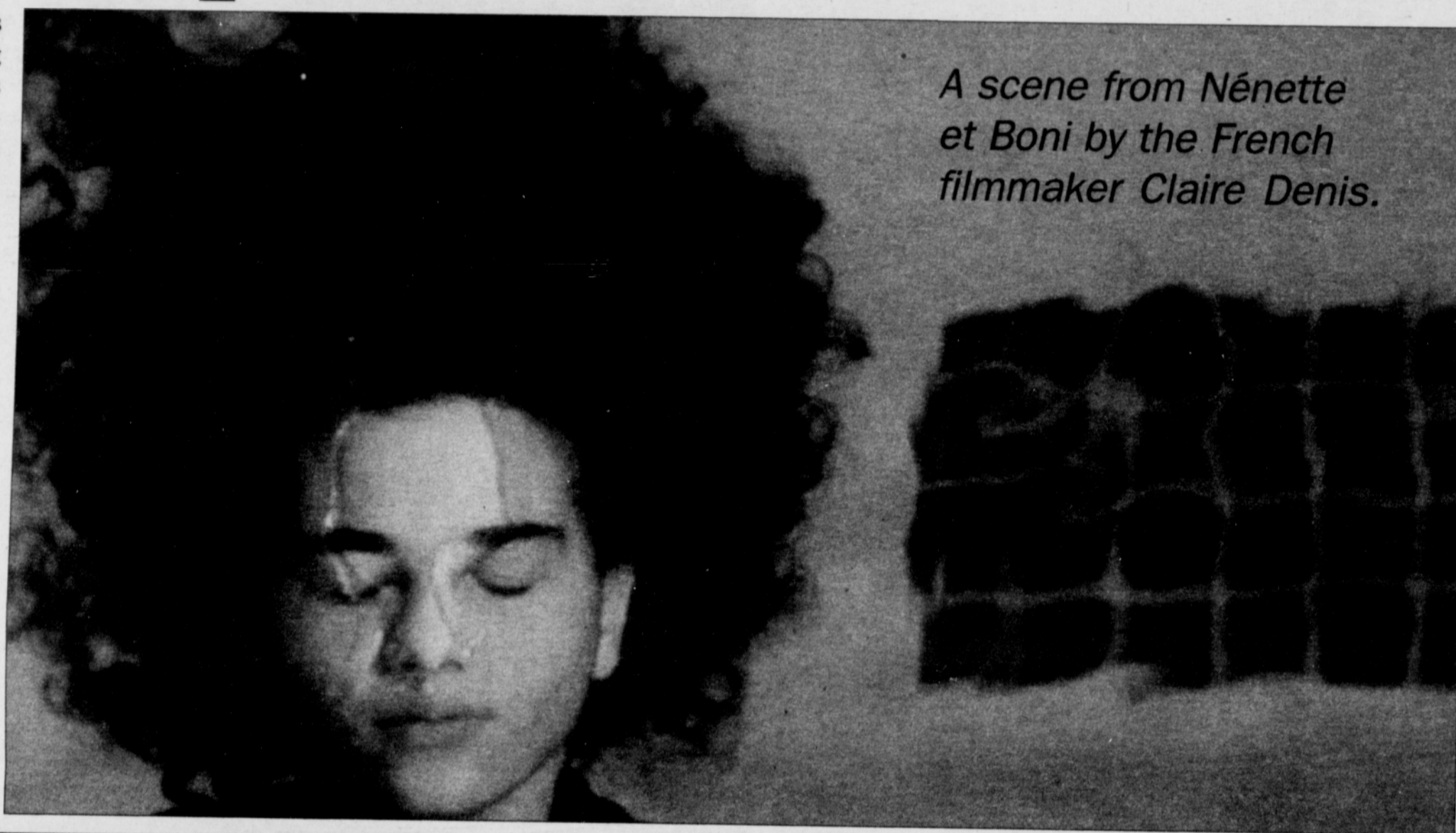
Arts & ENTERTAINMENT

Lyrical Space of Claire Denis

The Northwest Film Center is proud to feature the striking filmography of one of France's most visually profound filmmakers in a new series entitled, "The Lyrical Space of Claire Denis."

Known for her unflinching portrayal of social realities, Denis began her career as an assistant director with the likes of Wim Wenders, Jim Jarmush, and Dusan Makavejev. Her first hand experience of social and political tension as a resident in French colonial Africa provides inspiration for much of her works.

The series will include nine of her directorial efforts in addition to three of her best-known assistant directed films. Shows start Friday, May 3 and will be continuing through May 16 at the Whitsell Auditorium, 1219 S.W. Park Ave. For information, visit nwfilm.org.



A scene from *Nénette et Boni* by the French filmmaker Claire Denis.

Showdogs



Showdogs is a full service salon. We do baths, all over hair cuts, tooth brushing, nail trims, soft claws, flea treatments, mud baths, and ear cleaning. We also have health care and grooming products to keep your pet clean in between visits.

Show Dogs Grooming Salon & Boutique

926 N. Lombard
Portland, OR 97217
503-283-1177

Tuesday-Saturday 9am-7pm
Monday 10am-4pm

*Yo dawg is gonna look like a show dawg
and your kitty will be pretty.*

Journey to America

Film shares local stories of transition

"Unheard Voices of Our Neighbors" is a film about local immigrant and refugees who share their journey to America and their personal transition, acculturation and realization of what America is really all about.

The Center for Intercultural Organizing invites you to attend a screening of the production on Friday, May 3 at 6 p.m. at Terrell Hall

in the Cascade Campus of Portland Community College, 705 N. Killingsworth St.

Attendees are also invited to attend a discussion afterwards to help understand this first stage of transition for immigrants and refugees and learn why the Center for Intercultural Organizing, a grass-roots based organization, continues to be grounded in the work of empowering and strengthening communities through advocacy.

A \$5 to \$10 donation will be requested to support the group.

Wonder Weeders Wanted

You're invited to join Friends of Peninsula Park Rose Garden and a friendly crew of volunteer weeders every Monday, 8 a.m. to noon now through September.

The goal is to manage weeds

before they take hold. No extensive experience required, plus you can work in the level beds or on the slopes. A weeding tool and garden gloves are all you need.

Just one hour of your wonder-

ful weeding will reduce or eliminate herbicide use; contribute to the overall beauty and health of the garden, and grow your garden knowledge and friendships

For more information, contact penrosegarden@gmail.com.

Advertise with diversity in
The Portland Observer

Call 503-288-0033 ads@portlandobserver.com