

The INSIDE



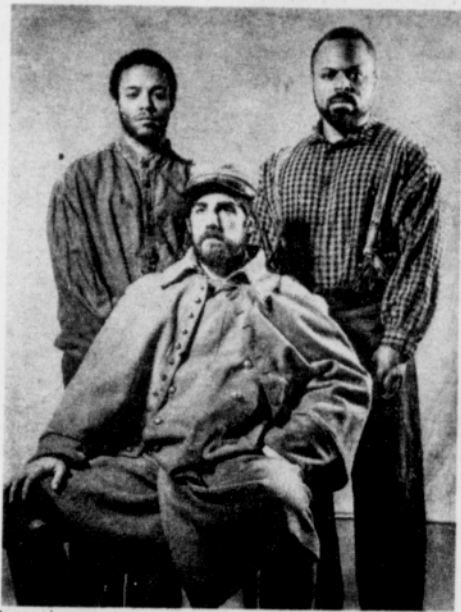
BLACK HISTORY inside

CALENDAR

pages 10

METRO

page 11



Arts & ENTERTAINMENT

pages 12-15

OPINION

pages 16-17



CLASSIFIEDS

page 18

RELIGION

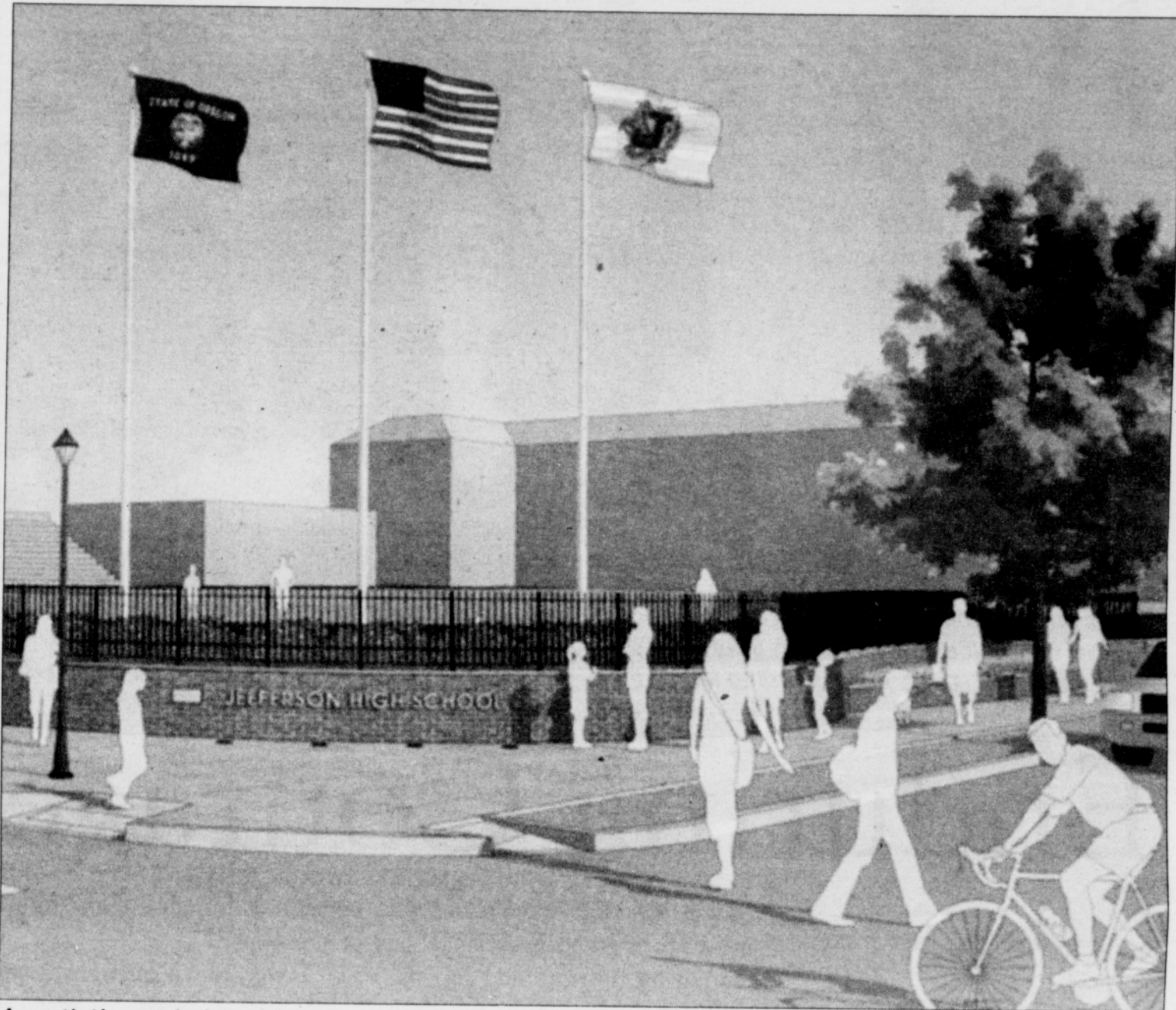
pages 19

This page Sponsored by:

Fred Meyer

What's on your list today?.

LOCAL NEWS



An artist's rendering shows a new welcoming front for Jefferson High School along North Killingsworth Street.

New Front for Jefferson Carl Flipper's inspiration coming true

**BY CARI HACHMANN
THE PORTLAND OBSERVER**
Carl Flipper believed that Jefferson High School should exhibit a sense of pride in its surroundings.

Designed by Morris Whitehouse in 1909, the school facing North Killingsworth Street between Commercial and Kerby avenues, just celebrated its centennial as a historical landmark in Portland.

While Flipper is no longer with us, his dream to open up the school's north property line, making it more welcoming to the surrounding community is finally coming true.

The Portland activist started the plan more than 10 years ago as the Jefferson Pavilion and Plaza Project.

Enlisting several community groups for support, he envisioned a more inviting entrance where the school's football field flows into Killingsworth with little forewarning, one with tall shade sails behind the stadium and a pedestrian-friendly plaza for people to sit.

With supporters on board and



Carl Flipper

funding in place, Flipper contracted Carlton Hart Architecture to draw up the designs. Sadly, however, when Flipper died in 2006, his project fumbled and lost momentum.

But, while the city is busy with plans to revitalize the Killingsworth corridor and Portland Community College moves forward with the expansion of their Cascade campus,

the community decided to move forward with Flipper's dream.

"Carl, as a community leader, really inspired a lot of people with this project," said Denyse McGriff, project manager at Portland Development Commission. "When he passed away, the focus was lost. Luckily, the community brought it back."

Jump starting the project were members of the Humboldt Neighborhood Association, representatives from PCC Cascade, McMenamins, and the Multnomah County Library, the Portland Teachers Association, Jefferson's Principal Margaret Calvert and many others from the neighborhood.

Portland Development Commission, whose Urban Renewal Advisory Committee dug up the project's original designs, will fund what they now call the Jefferson High School Frontage Improvements Project.

The budget is estimated at \$600,000, said McGriff. She ex-

continued ▼ on page 9