

Arts & ENTERTAINMENT

Avalon Flowers

520 SW 3rd Ave., Portland, OR 97204 • 503-796-9250



Cori Stewart--
Owner, Operator

*A full service
flower experience*

- Birthdays • Anniversaries
- Funerals • Weddings

**Open: Mon.-Fri. 7:30am til 5:30pm
Saturday 9am til 2pm.**

Website: avalonflowerspdx.com
email: avalonflowers@msn.com
We Offer Wire Services

Solar Maximum at Sky Theater

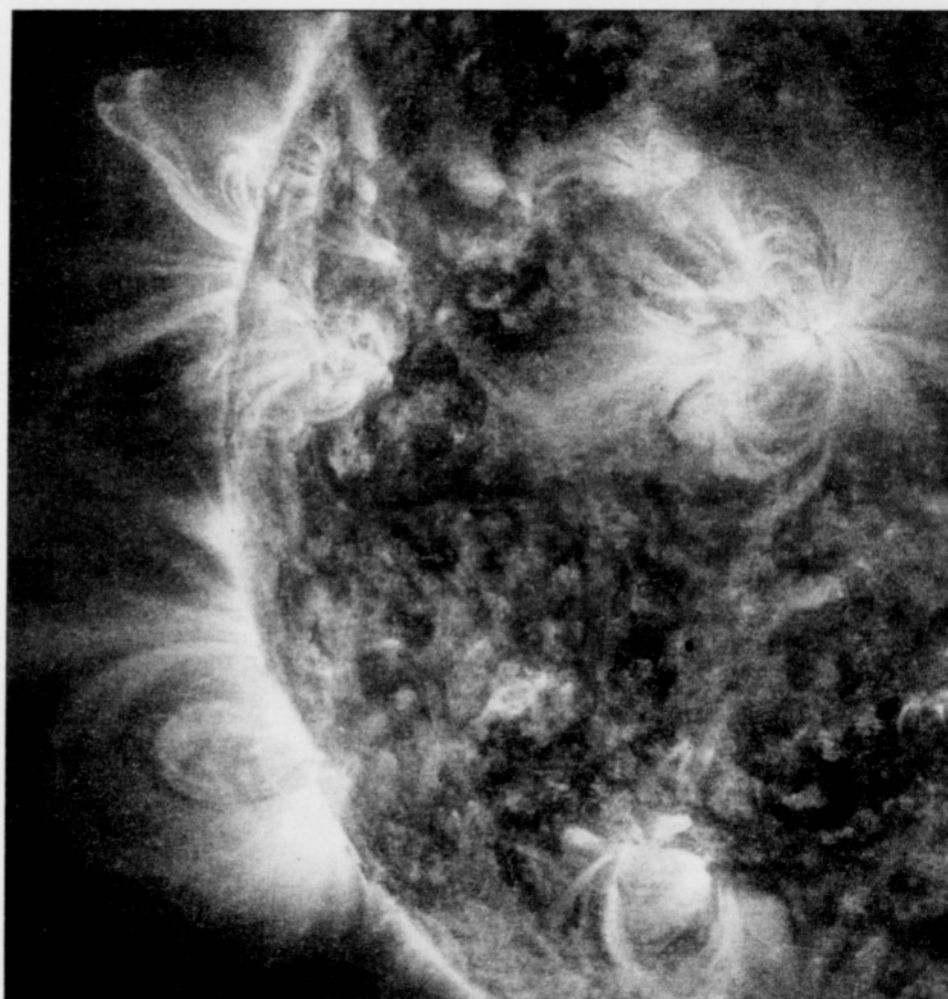
The Mt. Hood Community College Planetarium Sky Theater will present "Our Sun Reaching Solar Maximum" on Monday, Dec. 3 at 7 p.m. and 8:15 p.m.

Our sun is approaching the maximum of its 11-year activity cycle and has been shooting out streams of solar particles towards Earth. What does this mean? Does it have something to do with the doomsday predictions for 2012?

The show will present some of the latest NASA solar images showing amazing details of sunspots, solar flares, and even sunquakes.

Planetarium director Pat Hanrahan will show visitors the current night sky with the planets and the location of a promising future comet for late 2013. This comet has the potential to rival the brightness of a full moon!

Visitors are also encouraged to ask questions during each 45-minute program. Admission is \$2 and free for MHCC students.



Streams of solar particles shoot out from the sun.

Jack & Jill Social Club

Cordially invites you to our
Masquerade Christmas Party

Saturday, December 8, 2012
9:00pm to 2:00am
at Billy Webb Elks Lodge
Portland, Oregon 97227

Entertainment provided by DJ Mike Morris

Price: \$10.00 for singles
\$15.00 for couples

For more information, please call
(503) 421-4877 or (503) 778-0531

FOOD

ENTERTAINMENT

RAFFLE

BUDGET INSURANCE

"Your Budget is our Budget"

At Budget we work with many insurance companies to find the best fit for your needs and to fit your Budget.



DURAN BEASLEY

Call today for a free quote!
503 515 4377

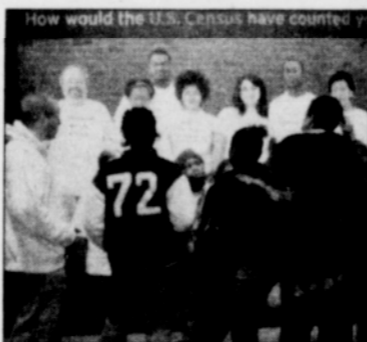
Fax 503 445 4591 Office 503 445 4595
3202 SE 82nd Ave Portland, OR 97266
An independent agent serving Oregon & Washington

- AUTO
- HOME
- LIFE
- BUSINESS
- HEALTH
- SR 22

ENTERTAINMENT GUIDE

RACE: Are We So Different? -

- A new exhibit about the science of



human variation at the Oregon Museum of Science and Industry (OMSI) challenges visitors to consider race in a new light. Open through Jan. 1, the national exhibition tells the story of race from biological, cultural and historical points of view.

Jazz Band Concert -- The University of Portland Jazz Band will perform Thursday, Nov. 29, on campus, 5000 N. Willamette Blvd. The concert, set for Buckley Center Auditorium at 7:30 p.m., is free and open to the public.

Tsunami Artifacts on Display -- Two pieces of the massive 201 ton dock that was washed away from a city on Japan's northeast coast by the devastating March 2011 tsunami and that landed on Oregon's Agate Beach this past June have now arrived at the Oregon Historical Society in Portland. The two metal boat tie offs are on display in the "Treasures of the Vault" exhibit through Dec. 30.

The Mightiest Wind --

The 50th anniversary of the most disastrous weather event to hit Oregon, the Columbus Day Storm is being commemorated with "The Mightiest Wind," a new exhibit that runs through Jan. 6 at the Oregon History Center, downtown.



Oregon Voices -- Oregon Voices tells Oregon's fascinating history through the eyes and ears of the people who lived it. The new Oregon Historical Society exhibit dives into a diverse range of subjects, from the displace-

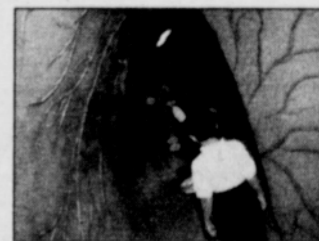
ment of minority populations from urban development, to cycles of boom and bust.

Norman Sylvester Band -- Boogie Cat Norman Sylvester and his band plays Thursday, Nov. 29 at a benefit for "Potluck in the Park" at the Tiffany Center; and Saturday, Dec. 1 for a Doernbecker's Children's Hospital benefit at the Lotus Card Room. Admission is \$10 with a new unwrapped toy donation.

Mel Brown Live -- Portland jazz giant Mel Brown performs at Salty's on the Columbia every Friday and Saturday night. Known as the "Gentleman of Jazz," Brown has a career spanning over 40 years.

Grossology: The (Impolite) Science of the Human Body

-- Kids and adults are welcome to this OMSI exhibit that is back by popular demand. The "science in disguise" experience lets you crawl through a 30-foot digestive tract, sniff out the body's smelliest odors, climb a human skin wall of scabs and pimples and view a vomit display.



The Soulful Showcase -- Blacque Butterfly presents spoken word, live music and featured artists on the second and fourth Thursdays of each month at 8 p.m. at E'Njoni Café, African-Mediterranean cuisine at 910 N. Killingsworth St.

Afrique Bistro Benefit -- Afrique Bistro, 102 N.E. Russell St., opens its doors each last Saturday of the month to raise donations for the African Women's Coalition. Great Caribbean and African music along with good drinks and fun people, 9 p.m. to 2:30 a.m. \$10 at the door.

Open Mic -- Curious Comedy, 5225 N.E. Martin Luther King Jr. Blvd., hosts a free night of stand-up comedy every 2nd and 4th Sunday. Open mic comics get three minutes, and audience members get a free sneak peak at Portland's up and coming talent. Signups start at 8:30 p.m. Show starts at 9 p.m.