

Mississippi  
 Alberta  
 North Portland

Vancouver  
 East County  
 Beaverton

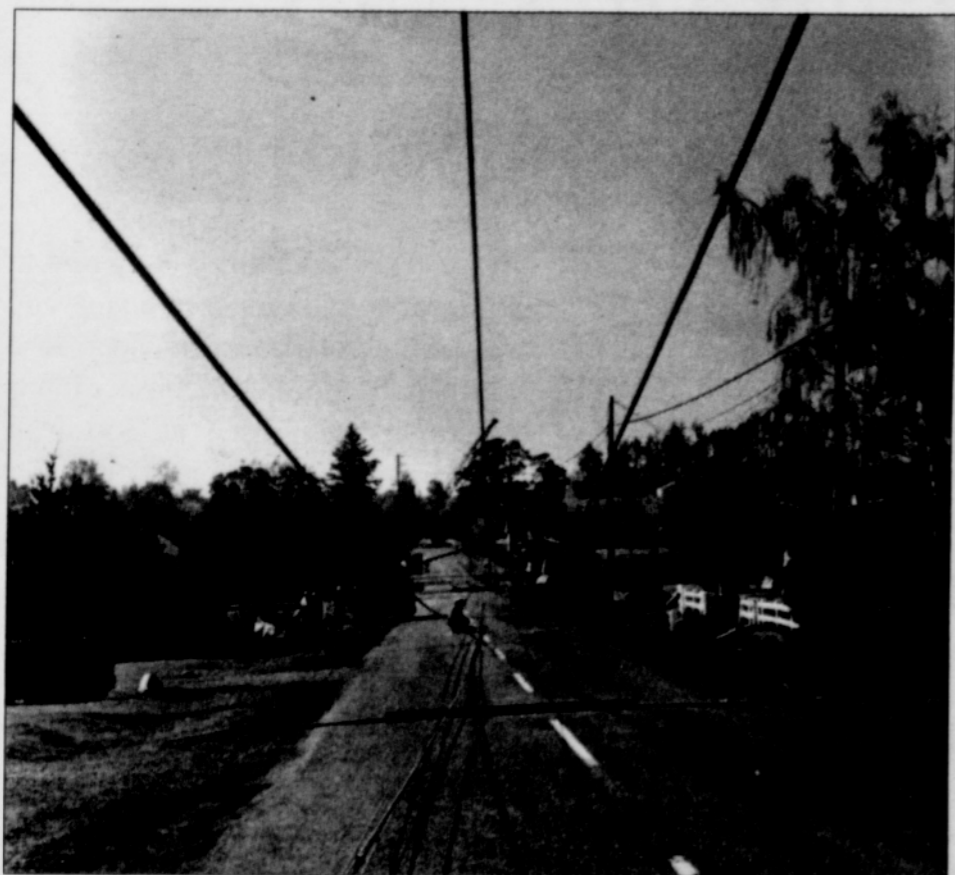


PHOTOS COURTESY OF THE OREGON HISTORICAL SOCIETY

A Port Orford Cedar planted in the late 1890s in front of Portland City Hall is taken down by the 1962 Columbus Day Storm. The Oregon Historical Society is marking the 50th anniversary of Oregon's most disastrous weather event in modern history with a special exhibit that runs through Jan. 6.

# The Mightiest Wind

Exhibit marks 50th anniversary of Columbus Day Storm



Power lines were down on virtually every street after the Columbus Day storm of 1962. A new Oregon Historical Society exhibit takes you back in time to recreate the destruction with photographs, film footage, and interviews from the many Oregonians who still remember the event.



A car is left in ruins after a pile of bricks and other building materials collapsed from the top of nearby structure during the hurricane force winds of the Columbus Day Storm, 50 years ago this month.

The 50th anniversary of the most disastrous weather event to hit Oregon, the Columbus Day Storm is being commemorated with "The Mightiest Wind," a new exhibit at the Oregon History Center, downtown.

On Oct. 12, 1962, hurricane-force wind gusts reached 116 miles per hour in Portland, 127 miles per hour in Corvallis, and in excess of 145 miles per hour on the Oregon coast. Nearly 50 fatalities were attributed to the storm, more than any other Pacific Northwest weather event in modern history. The storm forced portions of Oregon to rebuild their power systems from the ground up; many locations went without power for several

continued ▼ on page 19