

# The INSIDE



## DIVERSITY SPECIAL



## FOOD page 7 & 12

## OPINION

pages 8-9



## HEALTH

pages 10-11



## MIETRO page 13



## SUMMER FUN GUIDE

page 15



## Arts & ENTERTAINMENT

pages 16-18



## CLASSIFIEDS

page 22

## CALENDAR

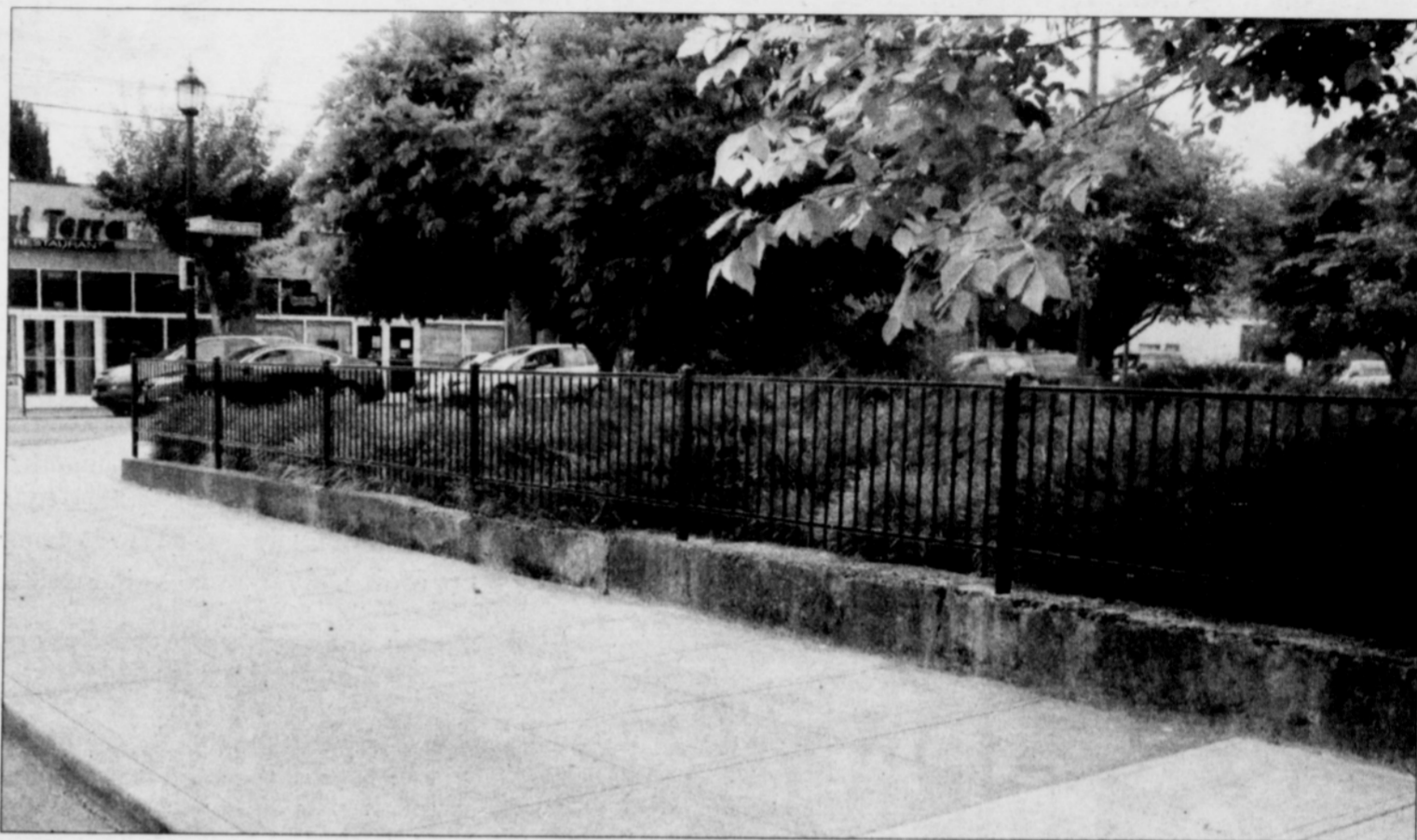
page 23

This page Sponsored by:

# Fred Meyer

What's on your list today?

# LOCAL NEWS



Curtailling a hangout for loitering and a spot where drugs were bought and sold, Portland Community College installed a fence on top of an old foundation wall along North Mississippi Street that borders a campus parking lot.

# Crime Fight

## PCC-Cascade teams up for success

BY ABE PROCTOR

The area around Portland Community College's Cascade Campus in north Portland -- particularly in the vicinity of the intersection of Albina Avenue and Killingsworth Street -- has long held a reputation as a rough neighborhood. But a new report released by the Portland Police Bureau shows that this reputation may soon be a thing of the past.

Details of the extraordinary progress made to reduce street crime and other undesirable activity in the north Portland community was made public on Thursday during a news conference attended by the police bureau, campus officials and business owners and residents.

Serious crimes like murder, aggravated assault, and robbery are down 27 percent in the vicinity of the campus from 2007 to 2011. Even in the last year and a half, as violent crime rose 9 percent citywide, it fell by 16 percent along the Albina and Killingsworth corridors.

The report largely attributes this progress to the work of the Albina-Killingsworth Safe Neighborhood Commission, a community safety group founded by Cascade Campus President Algie Gatewood in 2006, of which the police bureau is a member.

The commission heard from residents, students, workers and businesspeople alike who shared a concern about repeated incidents of loitering, theft, drug possession

and dealing graffiti and, sometimes, gang violence.

Gatewood asked the community to find ways to make the neighborhood a safer and more livable place. He tapped local residents, business owners, the police bureau, Jefferson and Rosemary Anderson high schools, and representatives from government agencies in the area, such as the Multnomah County Library and TriMet. They began to meet regularly, and the Albina-Killingsworth Safe Neighborhood Commission was born.

"Since the commission began, we have made tremendous strides toward making this a safer, warmer,

*continued* ▼ on page 21

## Added Enforcement on Flash Mobs

A new protocol will send juveniles to detention if they are caught stealing from stores or committing thefts and robberies on transit as part of a social media-organized criminal flash mob.

Local convenience stores and the Lloyd Center Mall have been recent targets of flash mobs of young people.

In the past, prosecutors would not pursue misdemeanor charges and police would not take the youth

to jail after they're caught.

The new protocol by Multnomah County allows police to make an immediate intervention and pursue prosecutions.

The tougher enforcement was adopted to curb an emerging problem. Once the youth are taken to juvenile detention, authorities can detain the youth overnight, or contact their parents to try to ensure the behavior is addressed at home.