

# SAFEWAY

REAL BIG DEALS EVERY WEEK WITH YOUR CARD

Prices good starting Thursday, July 5th!



**1.99** lb. Club Price

**Whole Boneless Pork Loin**  
Sold whole in the bag. Or Boneless Pork Top Loin Center Cut Chops, \$2.99 lb. Extreme Value Pack. SAVE up to \$3.00 lb.



**2.99** lb. Club Price

**Rancher's Reserve® Boneless Beef Chuck Steak**  
Extreme Value Pack. SAVE up to \$3.00 lb.



**2.99** lb. Club Price

**93% Lean Ground Beef or 90% Lean Ground Sirloin**  
Not to exceed 7% fat. Extreme Value Pack. SAVE up to \$2.00 lb.




**BUY 1 GET 1 FREE** Club Price

**Franz Variety Breads or Bagels**  
Selected sizes and varieties. SAVE up to 2.99 on 2.



**6.99** lb. Club Price

**Raw or Cooked Shrimp**  
21 to 25-ct. Raw. Or 51 to 60-ct Cooked. Both sold in a 2-lb bag. Frozen. SAVE up to \$3.00 lb.



**2\$4** Club Price

**Lucerne® Shredded or Chunk Cheese**  
6 to 8-oz. Selected varieties. Club Price: \$2.00 ea.



**5.99** lb. Club Price

**Primo Taglio® Pan Roasted Turkey Breast or Provolone Cheese**  
SAVE up to \$3.00 lb.



**7.20** ea. Club Price

**MIX & MATCH**  
WHEN YOU BUY 6 OR MORE

**Columbia Crest Estate, Robert Mondavi PS or Sterling VC 750-ml. Selected varieties.**  
Single Bottle Price: \$7.99 ea.



**2.59** Club Price

**Pantry Essentials™ Milk**  
Gallon, 2%, 1%, Creamy Fat Free or Fat Free.



**4\$10** Club Price

**General Mills Honey Nut Cheerios**  
17-oz. or Lucky Charms 15-oz. Cereal. Club Price: \$2.50 ea. SAVE up to \$9.96 on 4.



**3\$10** Club Price

**refreshe® Water**  
24-pack, 16.9-oz. Club Price: \$3.34 ea. Plus deposit in Oregon. SAVE up to \$1.07 on 3.



**10\$5** Club Price

**Yoplait Yogurt**  
4 to 6-oz. Selected varieties. Club Price: 50¢ ea.



**4\$10** Club Price

**Marie Callender's or Healthy Choice Meals**  
\$3 to 19-oz. Selected varieties. Excludes Steamers. Club Price: \$2.50 ea. SAVE up to \$1.96 on 4.



**10.99** Club Price

**Tide Detergent**  
100-oz. Liquid, 95 to 98-oz. Powder. Selected varieties. SAVE up to \$4.00.

**BUY 1 and GET THIS plus THIS FREE**

**Oreo Cookies Pack** EQUAL OR LESSER VALUE 11.3 to 15.9 oz. Selected varieties.

**12-pack refreshe® soda** 12-oz. cans. Selected varieties. Plus deposit in Oregon.

Offer valid with Card® from 7/5/12 - 7/10/12. Online and in-store prices, discounts and offers may differ. Limit 3 free 12-packs of refreshe® soda per transaction. \*Safeway Club Card, CartPlus™, Safeway Club Card, Rewards Remarkable Card, Tom Thumb Reward Card, Vons Club Card, Pavilions ValuePlus Card or Dominick's Fresh Values Card.

**Get this Week's Hot Offers! just for U**

**1.69** Safeway Apple Juice 64-oz. Club Price

**39¢** Chipita Bananas 10-oz. Club Price

**49¢** Children of the Sea Chunk Light Tuna 5-oz. Club Price

**Sign up at Safeway.com. Go to the Coupon Center.**

**JULY 5 6 7 8 9 10**

THUR FRI SAT SUN MON TUES

Prices in this ad are effective 6 AM Thursday, July 5 thru Tuesday, July 10, 2012 in all Safeway stores in Oregon (except Milton-Freewater) and S.W. Washington stores serving Wahkiakum, Covitz, Clark, Skamania and Klickitat Counties. Items offered for sale are not available to other dealers or wholesalers. Sales of products containing ephedrine, pseudoephedrine or phenylpropanolamine limited by law. Quantity rights reserved. SOME ADVERTISING ITEMS MAY NOT BE AVAILABLE IN ALL STORES. Some advertised prices may be even lower in some stores. On Buy One, Get One Free ("BOGO") offers, customer must purchase the first item to receive the second item free. BOGO offers are not 1/2 price sales. If only a single item purchased, the regular price applies. Manufacturers' coupons may be used on purchased items only — not on free items. Limit one coupon per purchased item. Customer will be responsible for tax and deposits as required by law on the purchased and free items. No liquor sales in excess of 52-gallons. No liquor sales for resale. Liquor sales at licensed Safeway stores only. © 2012 Safeway Inc. Availability of items may vary by store. Online and in-store prices, discounts and offers may differ.

## GREAT PRICES on Summer Produce!



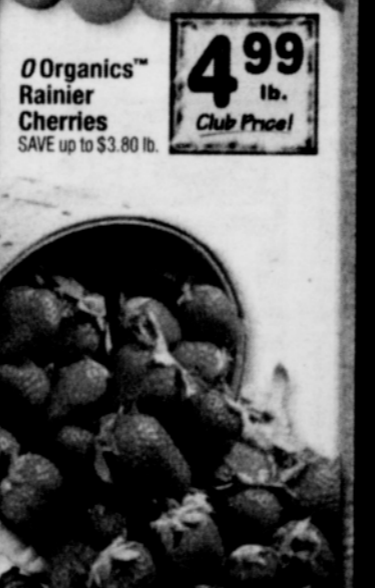
**77¢** Club Price

**Peaches**  
SAVE up to 2.22 lb.



**4.99** lb. Club Price

**Organics™ Rainier Cherries**  
SAVE up to \$3.80 lb.



**1.99** ea. Club Price

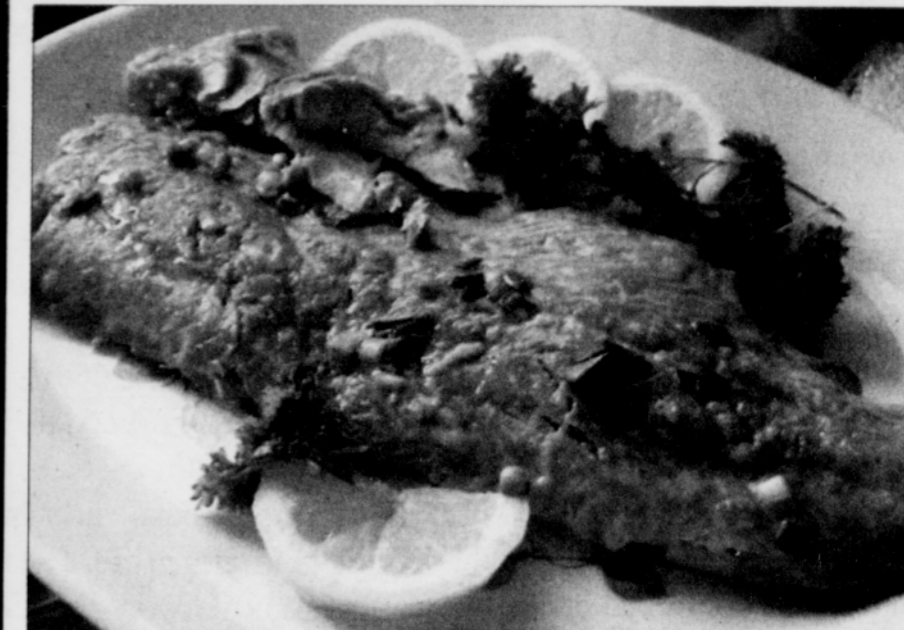
**1-lb. Strawberries**



**88¢** Club Price

**Green Zucchini or Yellow Squash**  
SAVE up to \$1.11 lb.

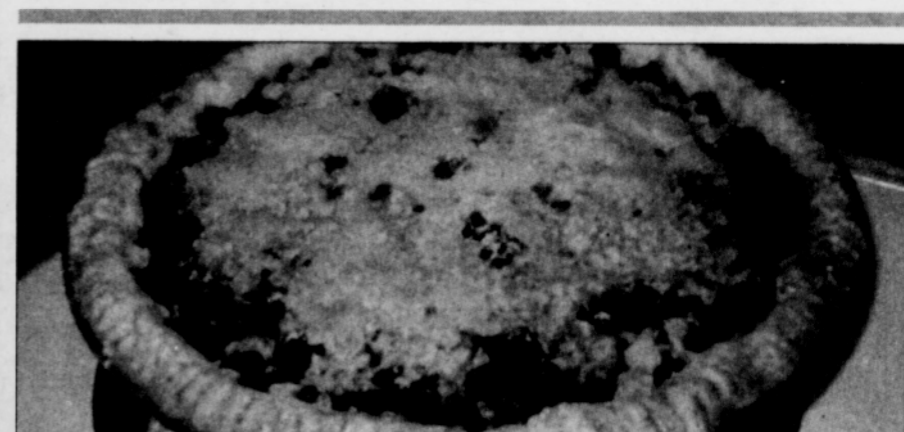
# FOOD



## Honey Ginger Grilled Salmon

- Ingredients**
- 1 teaspoon ground ginger
  - 1 teaspoon garlic powder
  - 1/3 cup reduced sodium soy sauce
  - 1/3 cup orange juice
  - 1/4 cup honey
  - 1 green onion, chopped
  - 1 1/2 lbs salmon fillets

- Directions**
1. In a large self-closing plastic bag, combine first six ingredients; mix well.
  2. Place salmon in bag and seal tightly.
  3. Turn bag gently to distribute marinade.
  4. Refrigerate 15 minutes or up to 30 minutes for stronger flavor.
  5. Turn bag occasionally.
  6. Lightly grease grill rack.
  7. Preheat grill to medium heat.
  8. Remove salmon from marinade; reserve the marinade.
  9. Grill 12-15 minutes per inch of thickness or until fish flakes easily with a fork.
  10. Brush with reserved marinade up until the last 5 minutes of cooking time.
  11. Discard leftover marinade.



## Blueberry Crumb Pie

It comes out pretty and delicious and a dollop of Cool Whip on top is lovely.

- Ingredients**
- 1 unbaked 9 inch deep dish pie shell
  - 4 cups fresh blueberries
  - 1/2 cup sugar
  - 3 tablespoons flour
  - 1 teaspoon cinnamon
  - 1 tablespoon orange juice or 1 tablespoon •lemon juice
  - 1/2 cup flour
  - 1/2 cup brown sugar
  - 2 tablespoons butter

- Directions:**
1. Preheat oven to 375•
  2. Place pie crust into pie pan and crimp edges as desired.
  3. In a mixing bowl, combine all filling ingredients gently.
  4. Pour evenly into pie plate.
  5. Combine flour and sugar for topping and cut in butter until mixture resembles course crumbs (I use my fingers for this).
  6. Sprinkle evenly over filling.
  7. Bake for 40-50 minutes until filling starts to bubble and crust is lightly browned.
  8. Cover edges with foil if crust is browning too quickly.