

HEALTH

Natural Hazards by Neighborhood

Maps rate risks and show resources

What's the earthquake risk in your neighborhood? Is your home or business located on a flood plain? To find out the answers to these questions and more, check out new maps created by the Portland Bureau of Emergency Management.

The maps identify natural hazards throughout the city. They show known earthquake faults, flood plains and other dangers, including hazardous material sites, steep slopes and forested areas at risk of fire.

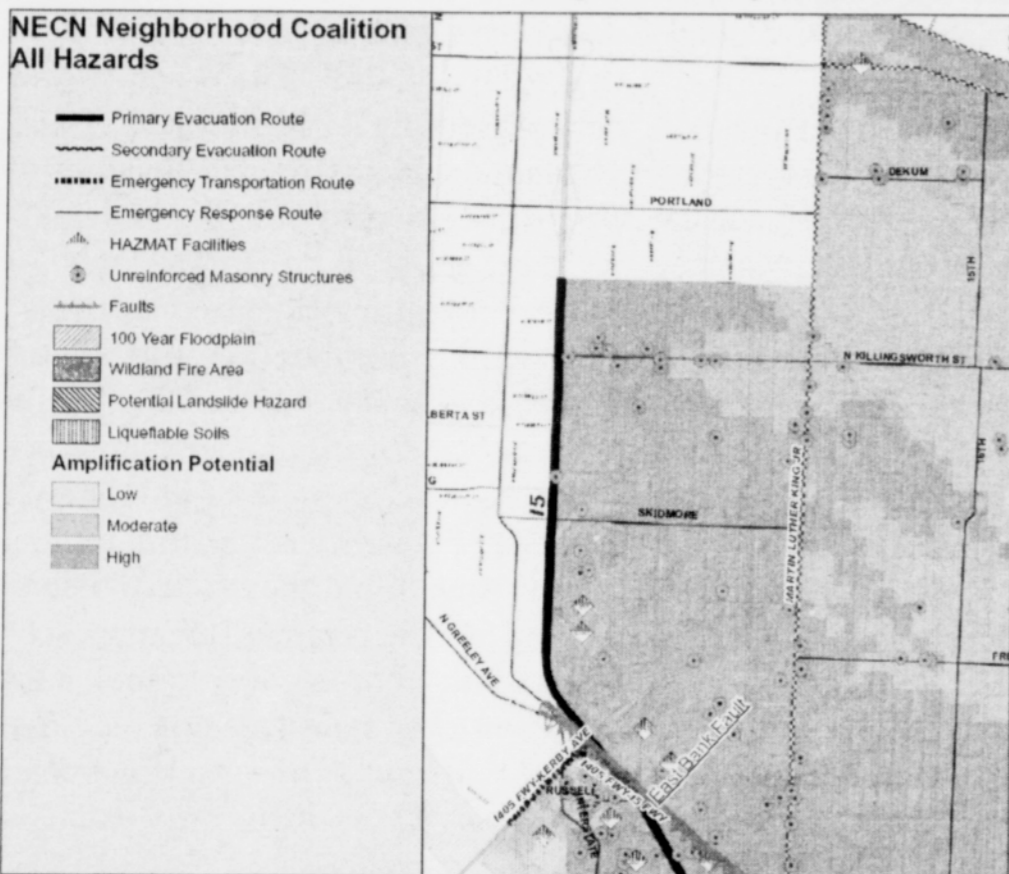
The maps also show community resources – such as evacuation routes and key transportation corridors used during emer-

gencies, hospitals, county clinics, schools, fire stations and police facilities – within each neighborhood coalition area.

Each map can be downloaded from the bureau's website at portlandoregon.gov/pbem. Larger versions are available for viewing in person at the following neighborhood coalition offices:

Central Northeast Neighbors, 4415 N.E. 87th Ave.; East Portland

Neighborhood Office, 1017 N.E. 117th Ave.; Neighbors West/Northwest, 2257 N.W. Raleigh; North Portland Neighborhood Services, 2209 N. Schofield; Northeast Coalition of Neighborhoods, 4815 N.E. 7th Ave.; Southeast Uplift Neighborhood Coalition, 3534 S.E. Main; and Southwest Neighborhoods at the Multnomah Arts Center, 7688 S.W. Capitol Hwy.



Portland's Bureau of Emergency Management has produced a series of maps showing earthquake, flood plains and other natural hazards.



International students from more than 90 countries participate in the AFS Intercultural high school student exchange program.

Share Your World Exchange student families wanted

AFS Intercultural Programs, a leader in international high school student exchange for more than 60-years, is looking for families to host one of 115 foreign exchange students, who will arrive in the Pacific Northwest this August.

The international students, from more than 90 countries across the globe, will attend a local high school, reside with a host family and discover life in the United States.

By hosting an AFS student, families build bridges of intercultural understanding, while connecting with an outstanding young person and sharing community.

"I thought that the best part of hosting would be experiencing new

countries and cultures, which has definitely happened. I was surprised to find that the best part has actually been experiencing the gratefulness and love that these kids brought into our lives," said Kelly Hanson, local host mom to six AFS students. "They truly become part of the family."

Host families, who will receive ongoing support from AFS staff and experienced local volunteers, will provide a bed, meals, and share their daily lives with students, as they would with their own children. According to AFS, there is no "typical" host family.

For more information on how to become a host family, visit afsusa.org.

Take the
TEST
Take
CONTROL

Every Tuesday
5:30 - 7:15 pm

Just walk in
Northeast Health Center
5329 NE MLK Jr. Blvd.
2nd Floor

Bring or mention this ad to get a
FREE & ANONYMOUS or
CONFIDENTIAL test for HIV!

Chiropractic Auto Injury Clinic, PC

Zchon R. Jones, DC
333 NE Russell St., #200, Portland, OR. 97212
(503) 284-7838

Truly making a difference in the lives of
Auto Accident victims and **Injured Workers** for nearly 20 years.
If you or someone you know has been in an accident,
call us so we can help you with your needs. (503) 284-7838



We are located on the corner of MLK and Russell Street, on the second floor above the coffee shop.

