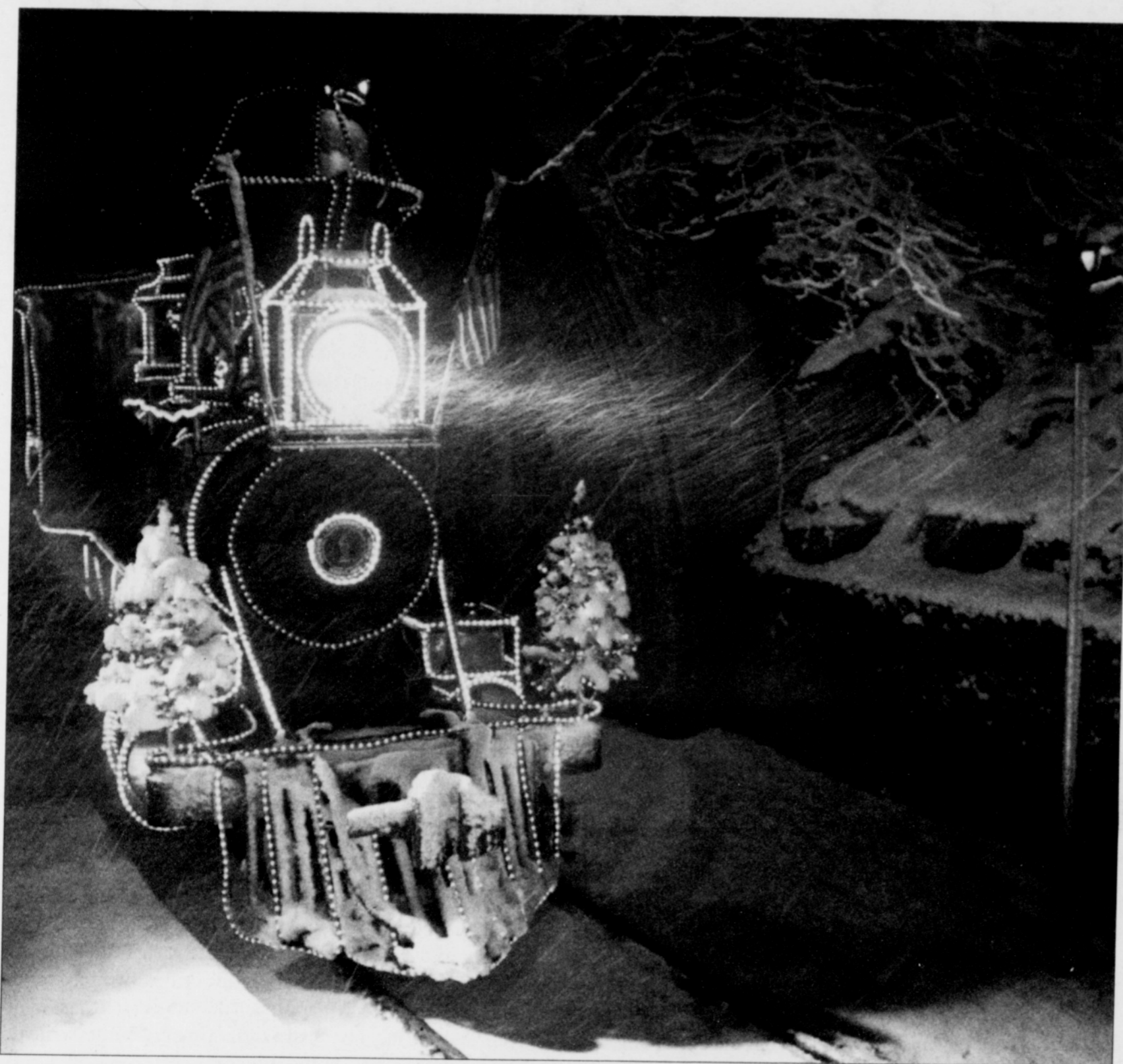


Mississippi  
Alberta  
North Portland

# METRO

Vancouver  
East County  
Beaverton



## ZooLights Illuminate the Holidays

*Light show and  
entertainment to  
draw crowds*

The Oregon Zoo invites visitors to brighten their holiday nights at ZooLights, where sparkling lights and brilliant hues transform the zoo into a winter wonderland. Presented by Fred Meyer with support from The Boeing Company, the traditional holiday light show begins Friday, Nov. 25 and runs through Jan. 1 at the zoo.

ZooLights has delighted visitors for more than two decades with its dazzling life-size animal silhouettes, moving sculptures, forests of lighted trees and light-bedecked train. Covered in holiday finery, the famous Oregon steam engine takes guests on an express jaunt around the zoo to see light displays visible only from the train.

*continued* ▼ on page 15

The light-bedecked Oregon steam engine chugs through a winter wonderland during ZooLights at the Oregon Zoo. The holiday light show begins Friday, Nov. 25 and runs through Jan. 1.

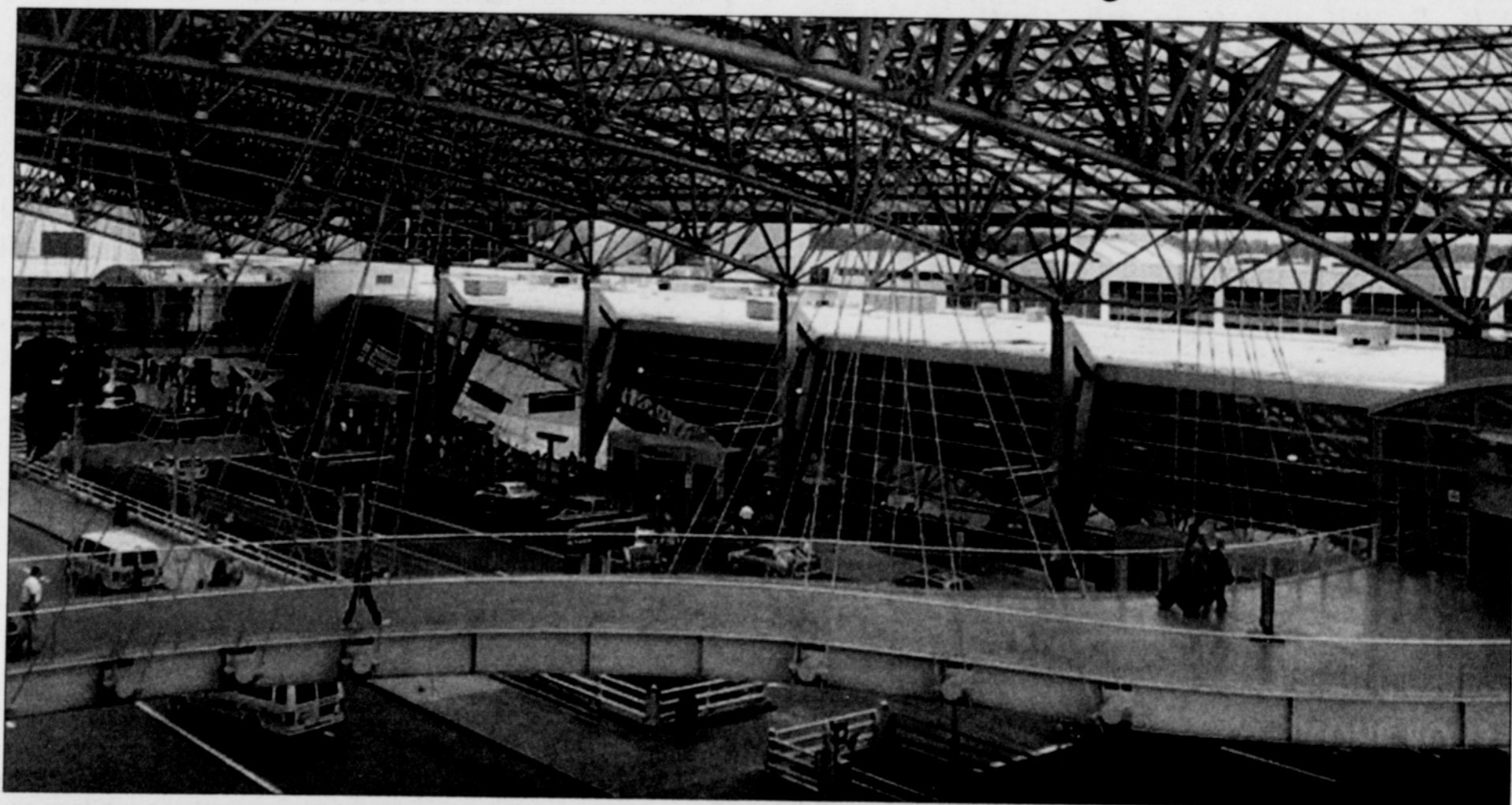
## Tips for Having Smooth Holiday Travel

**Airport offers  
advice on what  
to expect**

With the holidays approaching, Portland International Airport has a few tips on what to expect and how to travel more smoothly.

In the week surrounding Thanksgiving, an estimated 263,000 travelers will use the airport. The busiest holiday period, Dec. 17-Jan. 2, should bring nearly 611,000 passengers to PDX. Overall, the airport will serve about one percent more travelers than last holiday season.

During the busiest forecasted holiday season — Nov. 23, 27 and 28, and



The short term parking garage provides an easy walk to departing and arriving flights at Portland International Airport.

*continued* ▼ on page 15