

"We carry your heart in our hands, with compassion and care"



Neal's

"Ask for Margret Neal"
Funeral Director/Owner

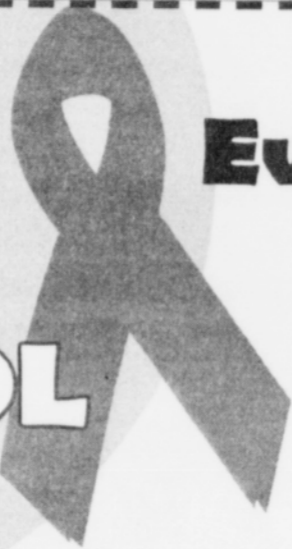
Compassionate Heart
Funeral Home

1093 SW Tobias Way Aloha, Oregon 97006
(503) 642-4620

This facility is licensed by the Oregon State Mortuary & Cemetary board #0445 effective Date April 6, 2010 Certification #8407

www.nealscompassionateheartfuneralhome.com

Take the
TEST
Take
CONTROL



Every Tuesday

5:30 - 7:15 pm

Just walk in
Northeast Health Center
5329 NE MLK Jr. Blvd.
2nd Floor

Bring or mention this ad to get a
FREE & ANONYMOUS or
CONFIDENTIAL test for HIV!



Chiropractic Auto Injury Clinic, PC

Zchon R. Jones, DC

333 NE Russell St., #200, Portland, OR. 97212
(503) 284-7838

Truly making a difference in the lives of
Auto Accident victims and **Injured Workers** for nearly 20 years.

If you or someone you know has been in an accident,
call us so we can help you with your needs. (503) 284-7838



We are located on the
corner of MLK and Russell
Street, on the second floor
above the coffee shop.

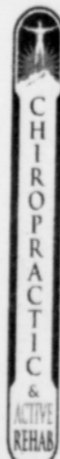
Parking Area

333 NE
Russell
#200

Russell St.

S

MLK Jr. Blvd

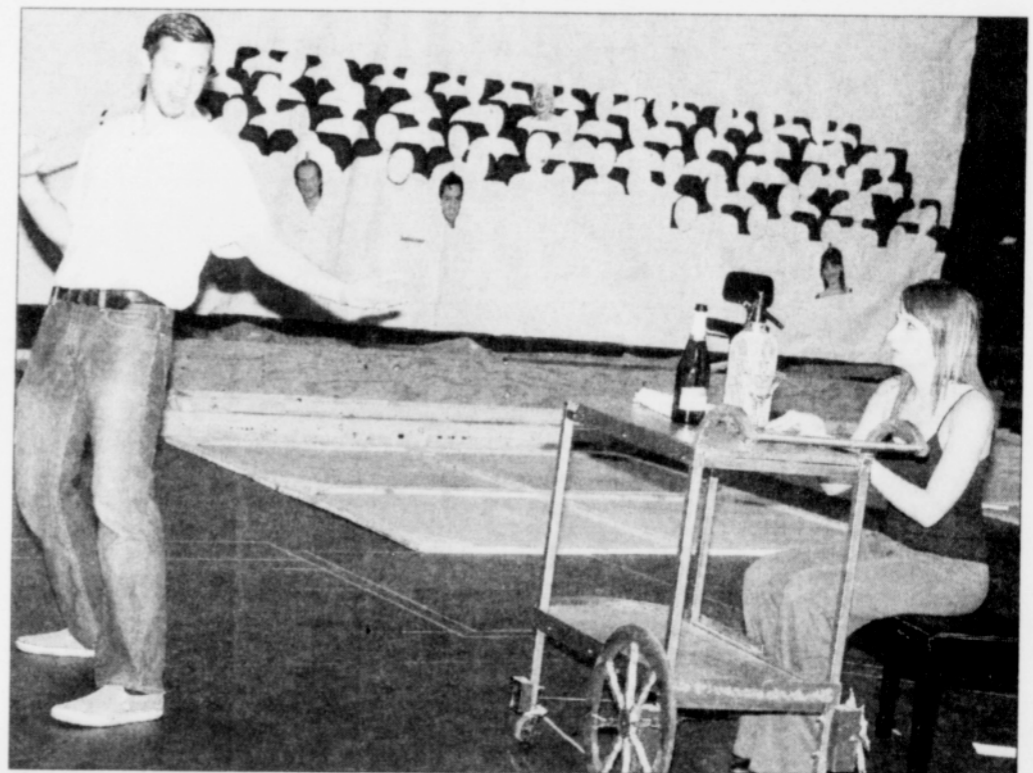


Arts & ENTERTAINMENT



Embracing Multi-Ethnic Roots

Armed with her accordion and drawing from her multi-ethnic French-Chinese-American upbringing, L.A.-based chanteuse/songwriter Jessica Fichot is scheduled to perform Tuesday, Nov. 8 at 8:30 p.m. at Secret Society, 116 N.E. Russell St. Fichot's music fuses Gypsy jazz, Chinese and Latin American folk music.



Joel Montgomery and Kaija Rayne are entangled in a mess of a theater production to save a school in Portland Community College's fall play 'Footlight Frenzy.'

'Footlight Frenzy' Comedy at PCC

Portland Community College's Theatre Arts Program students will send their comedic skills into a frenzy with the fall term play "Footlight Frenzy."

Written by Ron House, Diz White, Alan Shearman and Bud Slocumb and based on the book "Fleeting Moment," the play centers on a desperate attempt to save a bankrupt school.

"The scenes shift back and forth from the real tribulations of the performers to the play they are 'performing,' and it is hard to tell which is sillier," said Theatre Arts Director Patrick Tangredi. "This fast moving slapstick farce is theatrical fun of

the first order." All showings are in the 400-seat Performing Arts Center on the Sylvania Campus, 12000 S.W. 49th Ave.

Performances are scheduled at 7:30 p.m., Thursday, Nov. 10, Saturday, Nov. 12, and Friday through Saturday, Nov. 18-19. Matinee performances are at 11 a.m. on Thursday, Nov. 17 and 2 p.m., Sunday, Nov. 20

Tickets are available at the PCC Sylvania Bookstore or a half hour before performances at the Performing Arts Center. Tickets are \$10 for general admission, and \$8 for seniors, students, and staff.