

Attention Small Business Owners

Do you want the computer skills that can help you:

- Create and manage your own website
- Reduce your costs
- Improve your sales

We offer computer training and technical support to teach you the valuable and practical skills you need to run your business more effectively

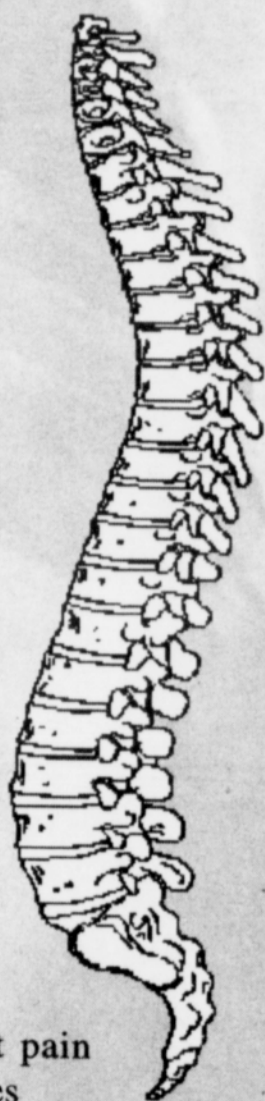
Call or email us today to get started!
 (503) 621-6368
 info@LB3ComputingSolutions.com

LB3 Computing Solutions
 "Making Sense of IT All"

**Your Care
 Our First
 Priority**



**Dr. Marcelitte
 Failla**
 Chiropractic
 Physician



We are located at
1716 N.E. 42nd Ave.
Portland, OR 97213

(Between Broadway and Sandy Blvd.)



- Automobile accident injuries
- Chronic headache and joint pain
- Workers Compensation injuries

Call for an appointment! **(503) 228-6140**

The Portland Observer
Sustainability



Free Downspout Disconnections

To keep pollution out of our stream and wetlands, this summer Gresham volunteers will help qualifying homeowners safely disconnect their downspouts, allowing roof runoff of homes to soak back into lawns and landscaping.

As part of the Healthy Streams Program, former Gresham AmeriCorps volunteers David Farmer and Kate Hibschan will supply free labor and parts, and educate the community about the benefits of disconnecting downspouts.

The roof of an average-size home can generate between 28,000 and 56,000 gallons of runoff per year. The roof water drains into pipes that carry it to the street. There it picks up pollutants like oil, gasoline and metals before entering the nearest catch basin on its way to local streams.

Gresham resident Diane Wichman worked with city staff to have her downspouts disconnected and the water redirected to a brand-new rain garden.

"I was so excited the first time it rained, that I called a neighbor to come watch the water fill the depression," Wichman said. "It's about diverting water from our roofs into the ground, making our streams and water resources



Gresham volunteers disconnect a home's downspout through a program to help prevent water pollution run off.

cleaner and making a difference in my city - Gresham."

The City's Watershed Division has grants from East Multnomah Soil and Water Conservation District and Metro Nature in Neighborhoods to help fund the free down-

spout disconnection service for a limited time.

The deadline to sign up for free assistance is Aug. 15. Not every property is suitable for downspout disconnection. To be approved, call Jamie Stamberger at 503-618-2195.

Northwest Voice For Christ Ministries
 "An Interdenominational Church"



Pastor Bishop H. L. & Elect Lady Earlean P. Hodge
 Pastor/Teacher/Revivalist

**CHURCH
 THEME:**

**Reaching
 Teaching
 Preaching
 Relevance
 in
 2011**

Sundays: Church School 12:00 — 1:00 P.M.
Worship Service 1:00 — 2:30 P.M.
Mission Studies: Wednesdays 6:00 — 7:00 P.M.
"School Of The Prophets" (Training) 7:00 — 8:30 P.M.

Location: Concordia University Campus
2800 NE Liberty (The GRW Library, room 303)
Portland, OR. 97211

To inquire about our Church please call: (503) 863-6545 or
 hodgehspks@msn.com www.nwvoiceforchrist.com



PHOTO BY MARK WASHINGTON/THE PORTLAND OBSERVER

**7-Eleven
 Supports
 Community**

A \$500 donation from 7-Eleven was presented to Ann Crowder on behalf of the Woodstock Community Center on July 15 as part of the grand opening of a new 7-Eleven store in southeast Portland's Woodstock neighborhood.

Save Energy, Money during Peak Times

To help businesses cut energy costs when demand is high especially during hot summer or cold winter days - about 80 hours a year - Portland General Electric and RTP Controls are offering customers a new technology option.

Under the Energy Partner program, businesses can receive discount

prices for dimming their lighting or cycling their air conditioning units on and off for a short time.

"Typically during those peak times, utilities often have to turn to their most expensive power sources, including bringing additional power plants online, to serve customers," said Carol Dillin, PGE's vice president

of customer strategies & business development.

In the next three years, PGE and RTP expect the program will reduce energy demand by up to 50 megawatts of capacity, the same as switching off 500,000 100-watt light bulbs during high energy use. For information, visit rtpcontrols.com.