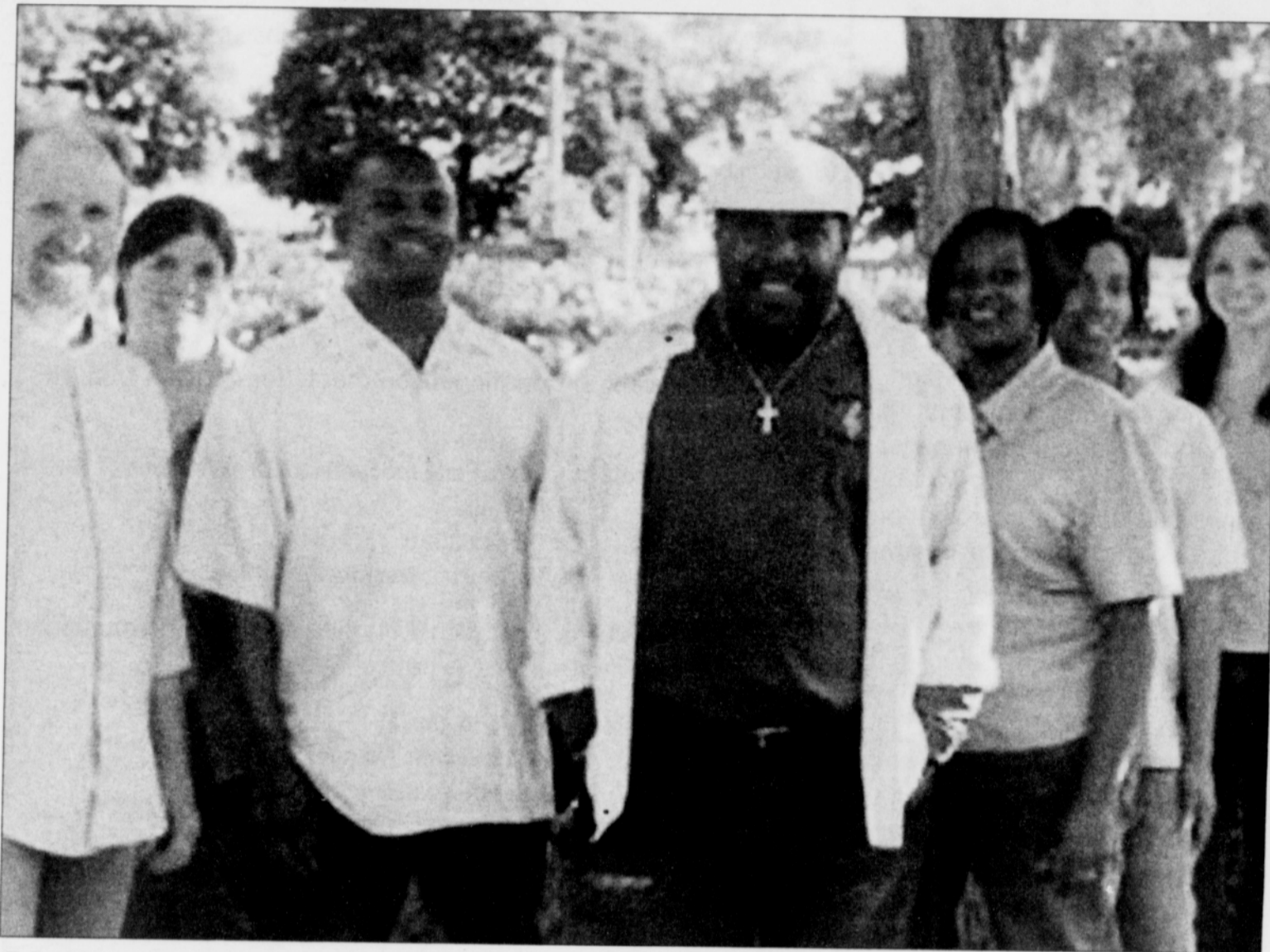


RELIGION



E.D. Mondaine & Belief will perform Saturday, July 9 during a dinner theatre event next to Po' Shines Café in the Kenton neighborhood.

An Event to Help Angels

As a way help the tornado-ravaged community of Joplin, Mo., the local organization Voices of a Thousand Angels is holding a fundraising dinner and concert event.

E.D. Mondaine & Belief will perform live during the Saturday, July 9 theater event to take place at 6 p.m.

next door to Po' Shines Café, 8131 N. Denver Ave., in the Kenton Neighborhood.

Po' Shines Café has put together a special menu for patrons of the event to purchase and enjoy.

The concert is free to attend, but the group will be accepting dona-

tions to fund individuals to travel to Joplin on July 29 to help a population that suffered the most destructive tornado to hit the U.S. in over 60 years.

For more information, visit voicesof1000angels.org or achaiarecords.com.

Fellowship Hosts National Conference

To inspire, develop and prepare individuals for the ministry, the Fellowship of Christian Believers will hold their national conference at the Portland Airport Holiday Inn from Wednesday, July 6 through Friday, July 8. Individuals already in the ministry are also invited to the event to enhance their knowledge and skills.

The theme for the conference is "Let It Rain" and workshops, services and special events will be featured throughout the event. Day sessions begin at 8 a.m., and free nightly services with choir performances will be held each night beginning at 7 p.m.

For more information, call George McCree, at 480-704-4830 or go to fcbinternational.org.

Hodge Comprehensive Counseling Service

Portland Congress Center

1001 SW Fifth Avenue, Ste 1100, Portland, Oregon 97204

Phone: 503-220-1790 Fax: 1+503-220-1815

Email: hodgehspks@men.com www.hodgecounseling.com



Dr. H. L. Hodge, Ph.D.
Certified Christian Counselor



Dr. Hodge on the radio:

Saturdays @ 1:00 PM

"A WAY OUT"

KPDQ True Talk
800AM

Counseling God's Way
Services Include:

- Relationship Specialist
- Stress Management
- Grief Counseling
- PTSD
- Motivational Speaker

501c.3 and Sliding Fee Scale

TERRY FAMILY

FUNERAL HOME

2337 N. Williams Ave.

Portland, Or 97227

503-249-1788

We make the service personal,
You make the tribute personal.

Every time we arrange a personalized funeral service, we take special pride going the extra mile. With our online Memorial Obituary, now we can do even more.

Friends and family can find out service information, view photos, read obituary, order flowers and leave personal messages of condolences from anywhere, anytime.

Simply go to our website.

www.terryfamilyfuneralhome.com

"Dedicated to providing excellent service and superior care of your loved one"

Dwight A. Terry
Oregon License CO-3644
Amy S. Terry
Oregon License FS-0395



MY FATHER'S HOUSE MINISTRIES

Come and Experience Faith and Miracles!

Pastors

Jerry & Annie Gutierrez

Would like to invite you for Service every



FRIDAY NIGHT AT 7PM

Services will be held at:
New Song Community Center
2511 NE MLK Blvd.

Corner of NE MLK Blvd & Russell Street in Portland

Doors open at 6pm for every service

For directions or more information, call

503-488-5481

www.mfhmportland.com