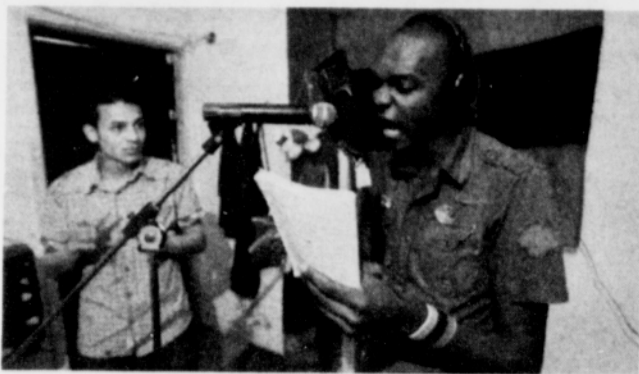


# The INSIDE

The Week in Review page 2

LAW & JUSTICE

pages 4-5



APRIL CALENDAR page 6

OPINION pages 8-9



Arts & ENTERTAINMENT

pages 10-15

CLASSIFIEDS page 15



RELIGION   
 pages 16-17

HEALTH   
 pages 18-19



FOOD   
 page 20

This page   
 Sponsored by:

# Fred Meyer

What's on your list today?.

## LOCAL NEWS



PHOTO BY MINDY COOPER/THE PORTLAND OBSERVER  
Mark Nye, the lead architect of the June Key Delta Community Center, speaks during an Earth Day celebration Saturday at the north Portland property where the center is under construction with sustainable, green features. Delta Sigma Theta sorority members, community members and family and friends joined the festivities.

# June Key Earth Day

### Future community center celebrates sustainable, green construction

BY MINDY COOPER  
THE PORTLAND OBSERVER

In honor of Earth Day, Delta Sigma Theta sorority members, community members and family and friends congregated under the sun Saturday to celebrate the unique construction of a sustainable community center across the street from Peninsula Park at North Albina Avenue and Ainsworth.

The future June Key Community Center is becoming a reality thanks to public and private partners who are committed to achieving sustainable, green developments in communities historically burdened by environmental, health, economic, educational, and social disparities.

The construction marks a bridge between the minority community and the green movement, said Mark Nye, the lead architect.

"Initially a vision of the Portland Alumnae Chapter of the Delta Sigma Theta sorority, this project is a work of many hands and stands as demonstration of how the highest standards grow from the grassroots," Nye said.

Attendees at the celebration were able to tour the construction site and witness first-hand the several sustainable features already onsite, including a creative means of energy production, off-grid water treatment, and eco-friendly material installations.

Equitable hiring and training opportunities have also been a main priority throughout the construction.

Andrew Colas, the president of Colas Construction, which is the lead contractor in the building, said one of the most exciting elements of the project was that over 50 percent of the contractor base working on the center is being done by women and small emerging privately owned businesses.

"The frames are installed by Oregon Trade women, which is a perfect example," he said.

When completed this summer, the June Key Community Center will provide educational and training opportunities and host meetings and events available for all members of the surrounding community.

"I think it will certainly be a place where the community can come together and have our programs," said Marian Gilmore, president of the local sorority and a member since 1964.

Founded in 1943, the Portland Alumnae Chapter of Delta Sigma Theta Sorority is part of a worldwide organization which has over 200,000 active members impacting communities through over 900 chapters around the world.