

# Education & Careers

## Complete Makeover for PCC Sylvania

Oldest campus to modernize learning environment

BY KATE CHESTER  
FOR THE PORTLAND OBSERVER

Portland Community College's oldest campus is about to get a facelift.

At 42 years old, PCC's Sylvania Campus is embarking on a five to seven-year construction project that will result in a modernized, energy-efficient campus. Initial design plans and concepts were shared Oct. 27 at a community forum.

"Sylvania is known for its vintage, concrete 1968 buildings that were constructed when energy prices were considerably lower," said Linda Gerber, president of Sylvania Campus. "These are not energy efficient buildings, nor do they offer our students the best learning environment."

Funding for construction stems from a \$374 million bond measure that voters approved in 2008 to upgrade existing buildings, expand workforce training facilities and add needed buildings at PCC's campuses throughout the district.

The architectural design efforts at Sylvania are being led by GBD Architects. According to Project Manager Gary Sutton, about \$55 million to \$60 million will be pumped into the campus to renovate 160,000 square feet of classroom, laboratory and office space.

"The largest project will be modernizing nearly 75 percent of the College Center building, transforming it into an accessible, easy-to-navigate student union," said Sutton.

Other projects include building a new childcare development center and a storage facility for the automotive building; completing a road around the campus to enhance ac-

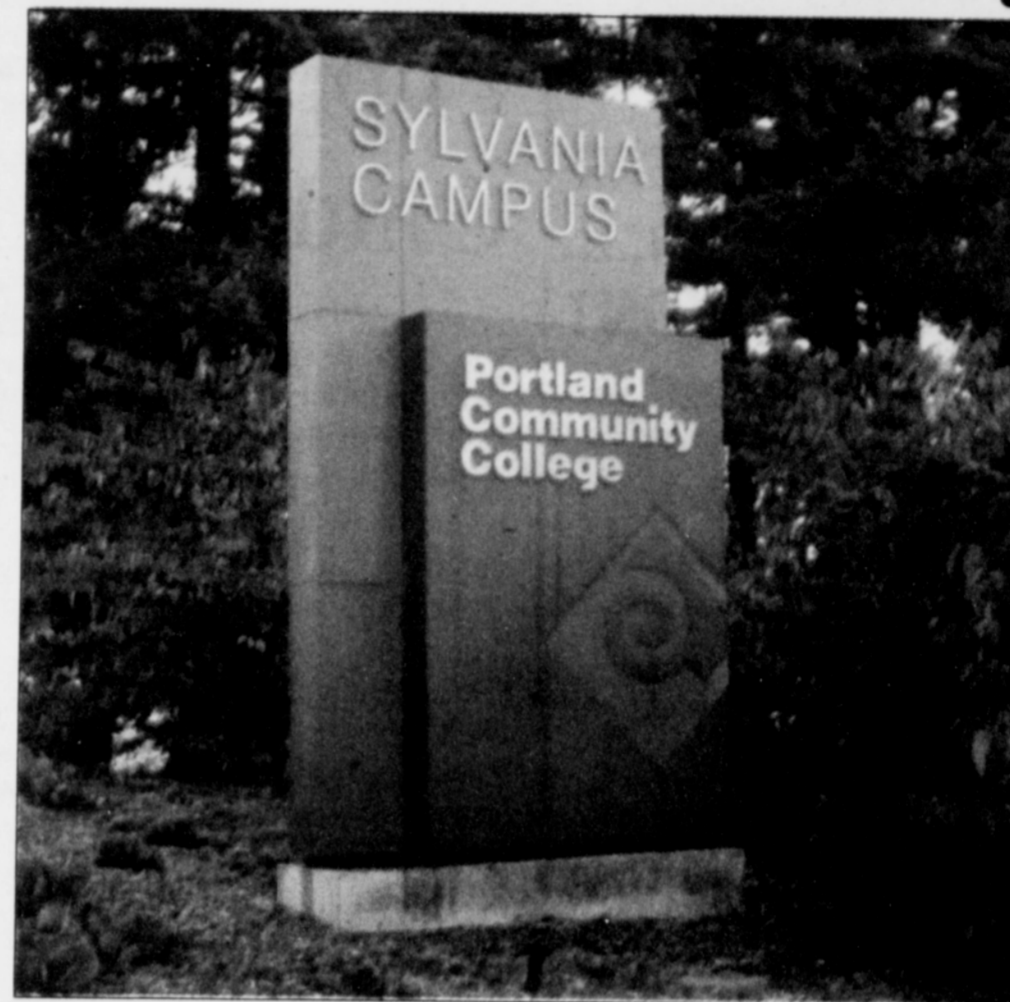
cessibility in case of emergencies; and improving storm water management and way-finding on campus.

"The complexity of this is really the coordination of logistics – of what project to begin, when, so that we create the least amount of disruption and can continue operating as usual, for students and staff," said Jeff Triplett, Sylvania's dean of instruction and campus liaison to the project. To achieve this, most construction work will be done during the summer months when there are fewer students on campus.

Simultaneous to the improvements being rolled out at Sylvania is the campus' goal of getting on the "path to Net Zero" – meaning, to create a campus that generates its own energy, collects its own water needs and treats its own waste.

The project also is referred to as "E6" – for energy creation; energy conservation; environmental stewardship; employment stimulus; education; and effective and efficient use of funds.

The idea was launched in 2009 when Gerding Edlen Sustainable Solutions was brought on to conduct



Bond funded improvements will completely modernize Portland Community College's Sylvania Campus in southwest Portland, the oldest campus in the college system.

E6 project as a model for innovative strategies and practices to address climate change, environmental stew-

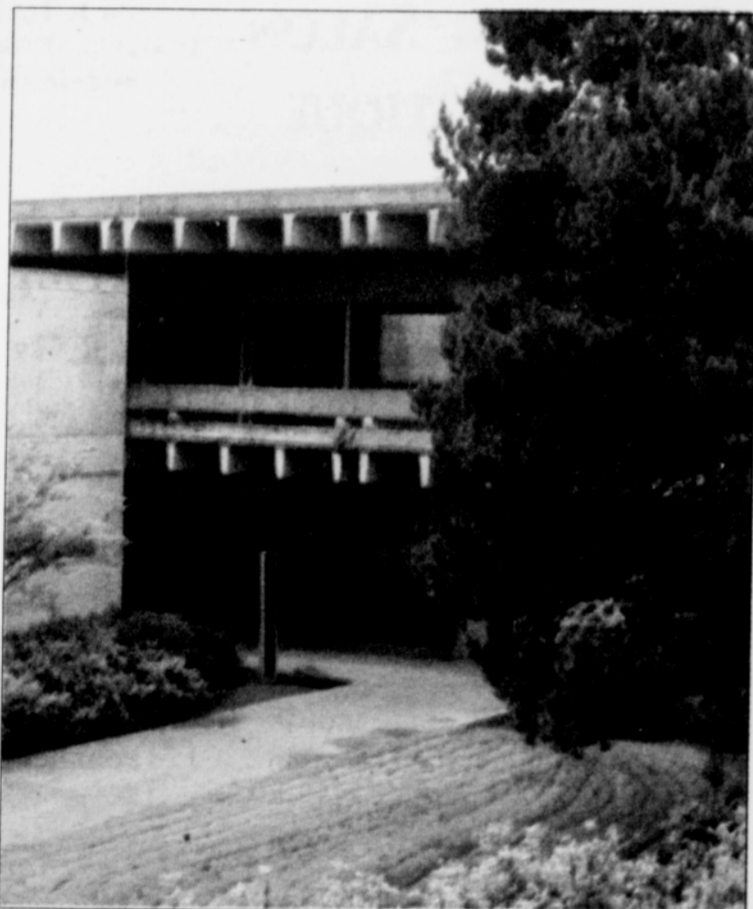
ardship and green workforce development," Gerber said. "To marry this with bond-funded improve-

ments slated for Sylvania will offer incredible learning opportunities for our students – and the community at large benefits from this."

The campus is hosting visioning sessions and symposiums with faculty, staff and students to get input and suggestions about what works well, areas for improvement and opportunities for interactive sharing as it creates a design framework for the campus improvements.

"We want to develop a schematic that provides greater accessibility, flexible and adaptable common spaces, introduces natural daylight indoors and creates intuitive way-finding on campus," said Kyle Andersen, one of the lead GBD architects on the project.

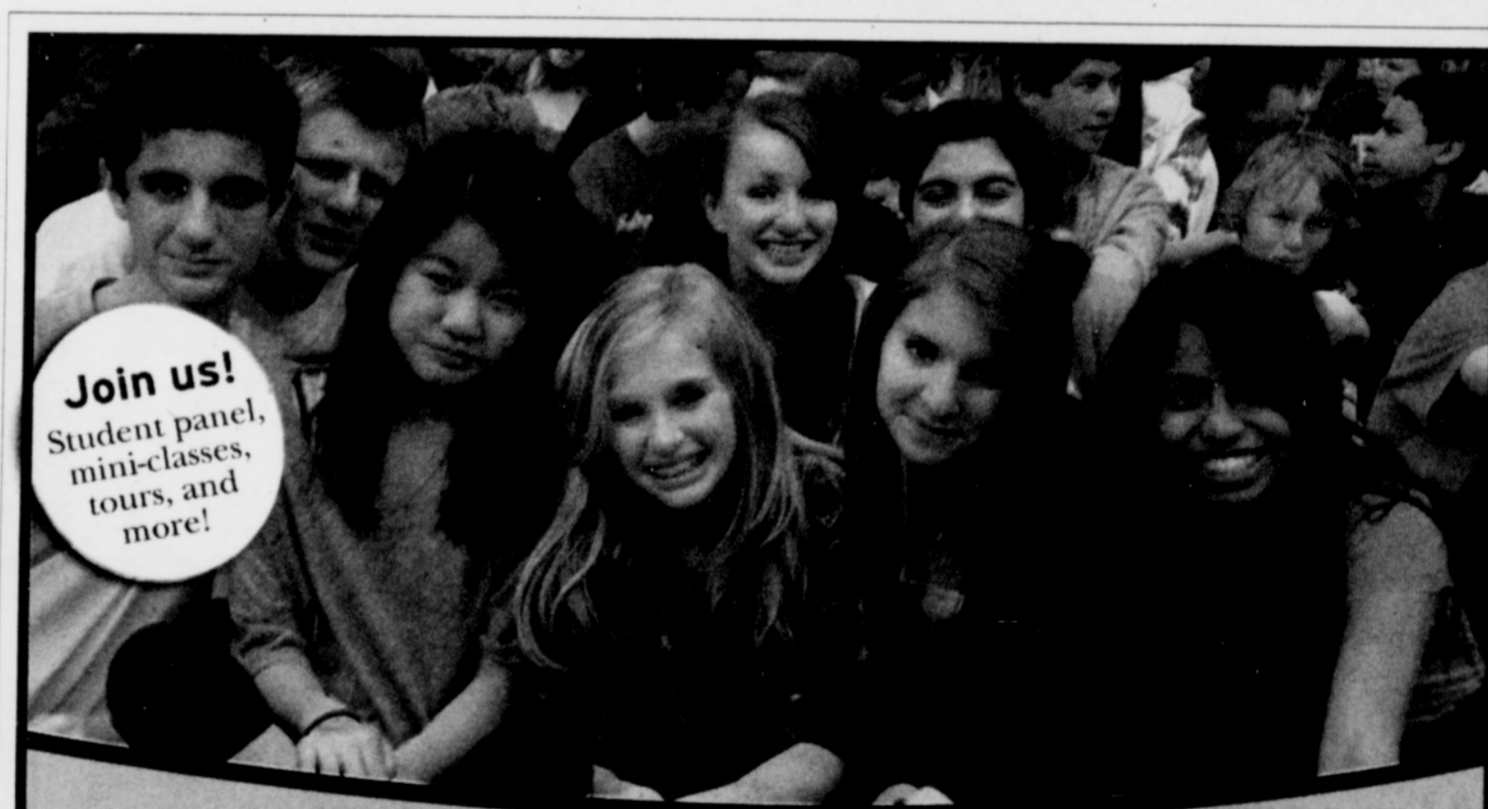
The Sylvania Campus – which straddles Portland, Tigard and Lake Oswego – is PCC's largest campus, with 30,430 full- and part-time students. This represents an increase of nearly 18 percent over the past decade. Collectively, the college serves more than 90,000 students – more than every school in the Oregon University System combined.



Concrete buildings that lack energy efficiency on the Sylvania campus of Portland Community College will be refurbished with green features in a major modernization of the southwest Portland campus.

a study and determine what it would take to make the campus Net Zero. A handful of multi-phase options were developed and presented for consideration; the option chosen – which will be woven into the renovations – includes building and water efficiency measures, and energy creation by way of a mega-watt co-generator. Together, they are anticipated to create an annual savings estimated at \$1.2 million.

"We're looking at the Net Zero/



Join us!  
Student panel,  
mini-classes,  
tours, and  
more!

### Oregon Episcopal School OPEN HOUSE

November 14, 2010 • Grades 9–12 • 1:30–4 pm



OREGON EPISCOPAL SCHOOL

We Are OES.

6300 SW Nicol Road • Portland, Oregon 97223  
503-768-3115 • admit@oes.edu

[www.oes.edu](http://www.oes.edu)