

## Flu Vaccine Supply Plentiful

Plenty of vaccine is available this flu season and Oregon Public Health officials are encouraging almost everyone to be immunized.

"There should be enough to immunize everyone who wants to avoid getting sick, so people should go out and get it now — the immunization should protect throughout the flu season," said Dr. Paul Cieslak, the state's acute and communicable disease prevention manager.

The flu season in Oregon usually runs from the fall through the spring. But flu can infect people throughout the year.

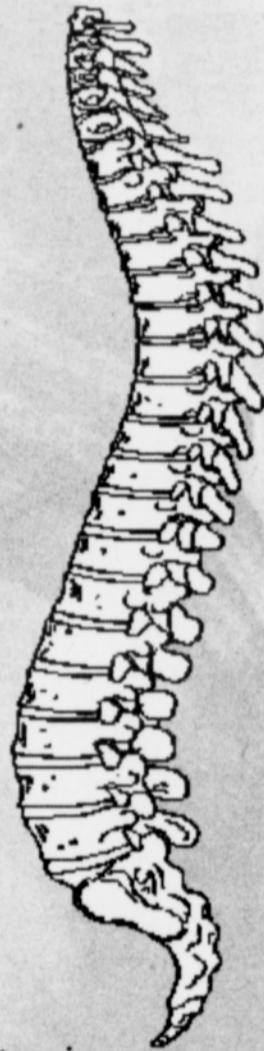
This year, the Centers for Disease Control and Prevention recommend that everyone over the age of 6 months get a seasonal flu vaccination.

This season's flu shot protects against three influenza viruses: H1N1, H3N2 and influenza B, which are already co-circulating in many parts of the world. The CDC says that even though the World Health Organization declared the H1N1 pandemic officially over, the H1N1 virus will likely continue to spread for years to come, like a regular seasonal influenza virus.

## Your Care Our First Priority



**Dr. Marcelitte Failla**  
Chiropractic Physician



We are located at  
**1716 N.E. 42<sup>nd</sup> Ave.**  
**Portland, OR 97213**  
*(Between Broadway and Sandy Blvd.)*



- Automobile accident injuries
- Chronic headache and joint pain
- Workers Compensation injuries

Call for an appointment! **(503) 228-6140**

## Northwest Voice For Christ Ministries

"An Interdenominational Church"



*Pastor Bishop H. L. & Elect Lady Earlean P. Hodge*  
*Pastor/Teacher/Revivalist*

We Reach,  
Teach &  
Preach in  
Jesus' name!!!

**Sundays: Worship Service — 12:00-1:30 P.M.**

**Seminars: Bible Themes—Wednesdays—6:00—8:30P.M.**  
"God The Father", "God The Son" and "God The Holy Spirit"

Bishop Hodge and Congregation invite you to join us at our appointment with Jesus.

**Location: Concordia University Campus**  
2800 NE Liberty (The GRW Library, Room 303)  
Corner of 29th & Liberty  
Portland, OR. 97211

To inquire about our Church please call: **(503) 863-6545** or [hodgehspks@msn.com](mailto:hodgehspks@msn.com) [www.nwvoiceforchrist.com](http://www.nwvoiceforchrist.com)

# A Step Above

## CLOTHING FOR MEN

Winter sale, buy one suit at regular price get the additional one for half price. All spring/summer hats are 20% off now. Two Piece short sleeve mens walking suits are on sale also. A Step Above now has a quaint upstairs featuring women and men resale clothing with gifts like, vases, candles, and eye wear (Glasses frames). This store has had 15 plus years experience in providing you with the best in fashion. It currently has moved into **Vanport Plaza at 5233 NE MLK BLVD. Portland, OR 97211.**



# BUSINESS Directory

## Double J Tires

New & Used Tires  
**Overstock & Used Tires**

\$15 & up PRICED TO SELL  
All tires mounted & blanced on the car, out the door - no additives.  
**Free stock wheels w/ purchase of any new or used tire- limited to stock on hand 30 years in business**

**2 locations to Serve You**  
**6841 NE MLK, Portland 503-283-9437**  
**4510 SE 52<sup>nd</sup> & Holgate 503-771-1834**

**State Farm®**  
Providing Insurance and Financial Services  
Home Office, Bloomington, Illinois 61710

## Michael E Harper

Agent



We moved to our new location:  
**9713 S.W. Capitol, Portland, OR 503-221-3050**  
**Fax 503-227-8757**



\$5.00 Tees

Family Reunion  
Screen Printing

503-762-6042

**State Farm®**  
Providing Insurance and Financial Services  
Home Office, Bloomington, Illinois 61710

## Ernest J. Hill, Jr.

Agent  
4946 N. Vancouver Avenue, Portland, OR 97217  
503 286 1103 Fax 503 286 1146  
[ernie.hill.h5mb@statefarm.com](mailto:ernie.hill.h5mb@statefarm.com)  
24 Hour Good Neighbor Service®



## Century 21

PENINSULA REALTY



**Peter Clarke**  
Broker

Each office is independently owned and operated.

6110 N. Lombard St.  
Portland, Oregon 97203  
Business 503.286.5826  
Fax 503.283.6300  
Cell 503.333.5809  
[peter.clarke2@century21.com](mailto:peter.clarke2@century21.com)  
[century21Peninsula.com](http://century21Peninsula.com)

[www.chrisguinn.net](http://www.chrisguinn.net)



**Chris Guinn III**  
503-703-4462  
[cgiii65@aol.com](mailto:cgiii65@aol.com)

## dwell Realty

**Tracey Hicks**  
503-317-5834  
[trahicks@msn.com](mailto:trahicks@msn.com)



[www.traceyhicks.com](http://www.traceyhicks.com)