

**EMMANUEL  
Church of God in  
Christ United**  
4800 NE 30th Ave. Port-  
land OR 97211  
**503-335-8772**



*Pastor & Wife -  
Bishop & Mrs. A.L. Wright*

You are cordially invited to worship with us in these services:

**Sunday Service**

Sunday School 10:00 A.M.  
Y.P.C.E. 6:30 P.M.

Worship Service 12:00 Noon  
Evangelistic Service 7:00 P.M.

**Weekday Service**

Tuesday Night: Bible Study 7:00 P.M.  
Friday Night: Regular Service 7:30 P.M.  
Prayer Meeting & Seminar: Monday - Friday 12:00

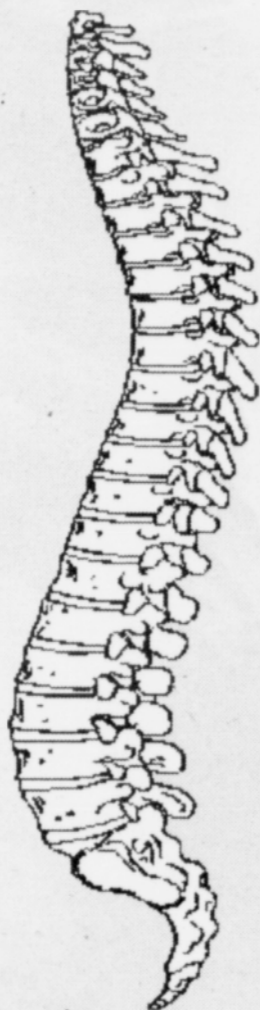


Vin Shambry (from left), Elizabeth Klinger, Rebecca Teran and David Cole star in 'Songs for a New World.'

**Your Care  
Our First  
Priority**



**Dr. Marcelitte  
Failla**  
Chiropractic  
Physician



We are located at  
1716 N.E. 42<sup>nd</sup> Ave.  
Portland, OR 97213

(Between Broadway and Sandy Blvd.)



- Automobile accident injuries
- Chronic headache and joint pain
- Workers Compensation injuries

Call for an appointment! **(503) 228-6140**

**Northwest Voice For Christ Ministries**  
"An Interdenominational Church"



*Pastor & Elect Lady  
Bishop H. L. & Earlean P. Hodge  
Pastor/Teacher/Revivalist*

**Worship Services:**

Sundays: Church School—9:00 A.M.  
Morning Worship—10:00 A.M.

Seminars: Bible Themes—Wednesdays—7:00 P.M.  
"God The Father"; "God The Son"; and "God The Holy Spirit"

Bishop Hodge and Congregation invite you to join us at our appointment with Jesus.  
**We Reach, Teach, & Preach in Jesus' name!!!**

**Location: 6401 NE 10th Avenue  
Portland, OR. 97211**

To inquire about our Church please call: **(503) 863-6545** or  
[hodgehspks@msn.com](mailto:hodgehspks@msn.com) [www.nwvoiceforchrist.com](http://www.nwvoiceforchrist.com)

**Songs for a New World**

Four actors, two musicians and a baby grand. The ingredients provide an intimate, acoustic presentation of Robert Brown's off-Broadway hit Songs for a New World, now playing through Saturday, July 3 at Miracle Theater, 525 S.E. Stark St., as part of the local

theatre group's Staged! Musical theater series.

From a ledge 57 stories above Fifth Avenue to a deck of a 1492 Spanish sailing ship, from a young man who hopes basketball is his ticket out of the ghetto, to the wife a certain North Pole resident who loves her husband but can't face

another Christmas alone, the play is about the hard choices and startling discoveries we make at pivotal moments in life.

Tickets can be purchased from [milagro.org](http://milagro.org), calling 503-236-7253 or from the PDX Ticket Network box office at the Hollywood Theatre.

**BUSINESS Directory**

**State Farm®**  
Providing Insurance and Financial Services  
Home Office, Bloomington, Illinois 61710

**Ernest J. Hill, Jr.**

Agent  
4946 N. Vancouver Avenue, Portland, OR 97217  
503.286.1103 Fax 503.286.1146  
[ernie.hill.h5mb@statefarm.com](mailto:ernie.hill.h5mb@statefarm.com)  
24 Hour Good Neighbor Service®



**Pablo and Crystal's  
House Cleaning.  
AND OFFICES TOO!!**

13450 SE Division St.  
Portland, Or 97206

Office Number  
(503) 761-2452

Pablo Centeno  
503.960.6823

Crystal Centeno  
503.960.6009

**FREE ESTIMATES!!!**



**\$5.00 Tees**

*Family Reunion  
Screen Printing*

**503-762-6042**

**INTERSTATE  
DENTAL CLINIC**

5835 N Interstate Ave,  
Portland, OR 97217

watch video at <http://www.yellowpages.com/info-2668891/Interstate-Dental-Clinic>

(503) 946-6273  
edwardward2@aol.com



website:  
[www.cosmeticdentalportland.com/Default.htm](http://www.cosmeticdentalportland.com/Default.htm)

**State Farm®**  
Providing Insurance and Financial Services  
Home Office, Bloomington, Illinois 61710

**Michael E Harper**



Agent



We moved to our new location:  
9713 S.W. Capitol, Portland, OR  
**503-221-3050**  
**Fax 503-227-8757**

**Century 21  
PENINSULA REALTY**



**Peter Clarke**  
Broker

Each office is independently owned and operated

6110 N. Lombard St.  
Portland, Oregon 97203  
Business 503.286.5826  
Fax 503.283.6300  
Cell 503.333.5809  
[peter.clarke2@century21.com](mailto:peter.clarke2@century21.com)  
[century21Peninsula.com](http://century21Peninsula.com)