

**Northwest Voice For Christ Ministries**  
"A Community Church"

#503-863-6545



Pastor & Elect Lady  
Bishop H. L. & Earlean P. Hodge

Worship Service: Sundays—8:00 A.M.  
Seminars: Bible Themes—Wednesdays—7:00 P.M.  
"God The Father"; "God The Son"; and "God The Holy Spirit"

Bishop Hodge and Congregation invite you to  
join us at our appointment with Jesus  
We Reach, Teach, & Preach in Jesus' name!!!

Please join us as we celebrate "Black History Month" on  
Sunday February 21, 2010 at 3:00PM

Theme: "Reflections Of Greatness In Black" (Psalm 90:1-2)  
Speaker: Dr. Barbara Tellis of Portland Christian Center,  
Bishop Lamont Tellis, Pastor

Location: 4800 NE 30th Ave.  
Portland, OR. 97211

To inquire about our Church please call: (503) 863-6545 or  
email: hodgehspks@msn.com www.nwvoiceforchrist.com

# Unhealthy Wireless Signals

continued ▲ from A3

started using it a lot more sporadically. I turn it off a lot more, and I've learned to be at a stage where I use my cell phone as an answering machine, and I keep it off for most of the day.

**Do you have Wi-Fi at home?**

I used to have Wi-Fi at home before I started research for this film, but I've taken it out. You know what? I just got a longer cable. I have the Wi-Fi router with the Wi-Fi turned off and I just plug in the cable. It works fine.

**Talk a little about the health effects. What are some things that can happen?**

There is a spectrum of health risks. We're talking on the low-end of the spectrum dizziness, forgetfulness, headaches, that sort of a thing that goes away after you hang up the phone. But when you talk about long-term exposure then you start to talk about degenerative diseases, where your brain is being slowly eaten away: It's dying in important ar-

reas. On the far end, you're talking about cancers. There have been several cancers that have been linked to wireless frequencies. The famous one, of course, is brain tumors, both malignant and benign. People have leukemia from having their whole body irradiated by a tower or some other form of wireless technology.

**How did you get the idea to do**

wanted to see what's going on here, if this is safe or not.

**There are all sorts of problems with cars. They run people over and emit cancer-causing fumes. Are you worried that people will accept some sort of risk for these modern conveniences?**

People are always willing to assume some sort of risk. I think you have to look at the balance between

*People are always willing to assume some sort of risk. I think you have to look at the balance between risks and awards. —Talal Jabari*

**this film?**

Two and a half years ago my wife and I had a baby, and as a new parent you become a little paranoid for your child. You make sure that all the sharp edges are covered and the TV is secure so they don't pull that on herself. Our neighbor has an antenna on his roof. I love this technology, and

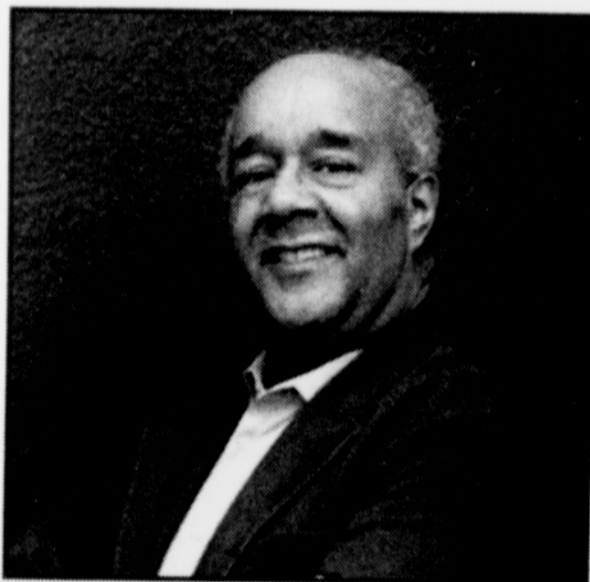
risks and rewards. Cars have, I believe, a bigger reward than a risk. It's difficult to, especially in the United States, to replace your car with something else.

Talal Jabari will be present for a screening of "Full Signal," Sunday, Feb. 21 at 4 p.m. at the Hollywood Theater on Northeast 40th and Sandy.



Join us for a special night with  
**New Song Community Church**  
Senior Pastor **Richard Probasco**.

You will be blessed as  
Pastor Probasco  
shares from his heart.



Richard Probasco is well known as a speaker, musician, and singer whose speaking and music ministry covers more than four decades. As the founder and president of New Song International, he still remains faithful to his 33 year calling to pastor New Song Community Church located in NE. Portland. He has appeared as the featured soloist at countless numbers of concerts, civic and church events.

Pastor Richard has an anointed delivery of the word of God with passion and humor.

**Friday, February 26th at 7pm**

**New Song Community Center**  
**2511 NE MLK Blvd.**

**Corner of NE MLK Blvd and Russell Street**

Infant and Toddler care will be provided. Doors open at 6pm for every service

**For directions or more information, call 503-488-5481 or log on to www.mfhmportland.com**

## Obituaries

### In Loving Memory

**Clyde Henderson Tull**

Clyde Henderson Tull was born on Aug. 4, 1929, in St. Michael Barbados, West Indies, where he attended Roebuck School. In the early 1960's, he began a career as a merchant seaman, sailing on the SS Argyle.

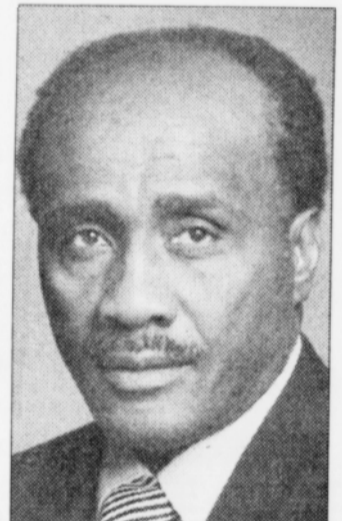
In 1966, the SS Argyle docked in Portland, and this is where Clyde met the love of his life, Jessie Kindle. In 1967, they were united in marriage. Clyde continued to sail as a merchant seaman until 1977, and then he started a new career at Crown Zellerbach Paper Mill, and retired after 35 years of dedicated service.

At an early age, Clyde accepted Jesus Christ as his Lord and Savior, and joined Providence Baptist Church in Portland. In 2009, he dedicated his life to Christ. Clyde enjoyed living his life to the fullest. He loved to travel with his wife and family, and also visiting his children in New York.

Clyde is preceded in death by his mother, Ivy Tull, and four sisters.

He is survived by his wife, Jessie; one brother, Mack Tull of London, England; one sister, Maudry Tull of Brooklyn, N.Y.; daughters Veronica Branch and Arlene Gall of New York, Velva Smith of Portland, Debbie Tull of Kingston, Jamaica; one son, Bervin Lionel Johnson of Portland; and several grandchildren, great-grandchildren and a host of nieces, nephews and friends.

A visitation will be held at Ross Hollywood Chapel on Wednesday, Feb. 17 from 9 a.m. to 5 p.m. Services will be held at St. Mark Baptist Church on Thursday, Feb. 18 at 11 a.m. Arrangements by Ross Hollywood Chapel.



We Remember  
You Fondly  
*from mother and family*

**David Crittenden**  
**March 10, 1967**  
**— Feb. 20, 2008**

**"I Love You Bro"**  
**From Big Bro C.L.**