

# In the Neighborhood

What is the most influential part of Martin Luther King Jr.'s legacy and how is it being felt today?

continued ▲ from 4

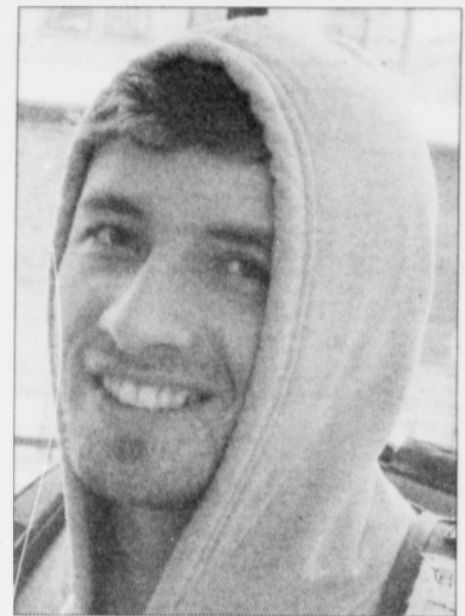
*He united white people and black people. He made people more together and stronger.*

— SHERITA MOORE



*He opened up the philosophy behind civil rights.*

— CHRIS CLEAVE



*I do think his dream has impacted our community.*

— SECRET BRYANT

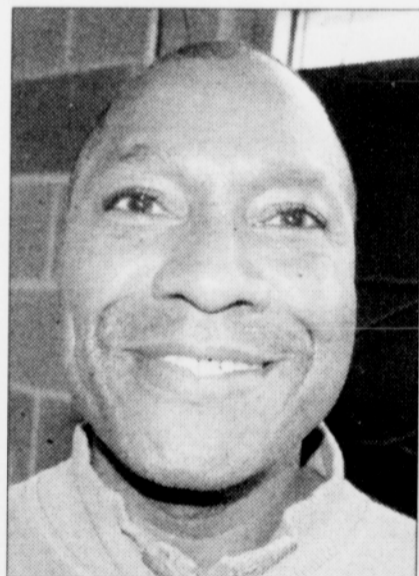
*You don't have to start a riot to have a revolution.*

— ESTELLE MORLEY



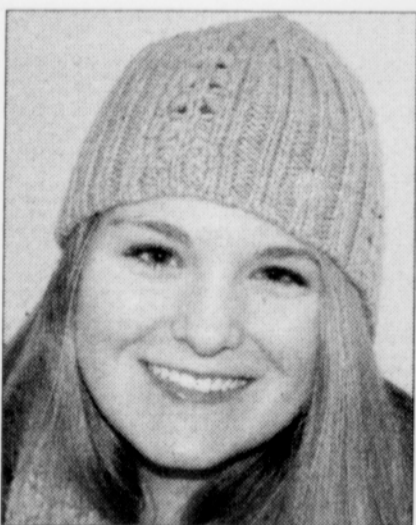
*Without him, and people like him, things would be a lot different.*

— DEER SHAMBRY



*He allowed people no matter what creed or color to unite.*

— HORACE SIMPSON



*He helped a lot of people. The country is more aware of issues of equality.*

— TABITHA MANCINI



## Silver Anniversary

### "Keep Alive The Dream"

Tribute to: Rev. Dr. Martin Luther King, Jr.

**Highland Christian Center**

7600 N.E. Glisan,

Portland, Oregon 97213

**Monday January 18, 2010**

**11:00 A.M. - 6:30 P.M.**

The entire program will be simulcast live on KBOO Radio (90.7 World Wide Web), Broadcast/tape delayed on Portland Community Media (Ch.11) from 1:00-8:00 pm, and Portland Public Schools Television Services (Ch. 28) from 3:00-10:00 pm.

**A Production of World Arts Foundation, Inc.**

A Non-Profit Organization

[www.wafinc.org](http://www.wafinc.org)



- S P O N S O R S**
- Portland Public Schools
  - Portland Association of Teachers
  - Oregon Education Association
  - McDonald's of Oregon & Southwest Washington
  - City of Portland
  - Enterprise Rent-A-Car
  - Concordia University
  - Portland General Electric
  - African American Chamber of Commerce
  - Coast Industries
  - KBOO Radio (90.7 FM)
  - Portland Community Media & Television Services
  - Providence Health & Services

