

ENTERTAINMENT
GUIDE

Totally Gospel II -- Peninsula Open Bible Church, 8225 N. Peninsula, hosts all styles of gospel, country, and contemporary music with host Riny Horst on Friday, Feb. 5 and every other month on the first Friday night from 7:30 p.m. to 9:30 p.m.

For more information, call 503-335-3132.

Cultures of the African Diaspora

-- Ghanaian music and dance concert, Friday, Jan. 15 at 7:30 p.m. at da Vinci Arts Middle School, 2508 N.W. Everett St. Fundraiser for Anai, a non-profit

that offers innovative African arts, folkloric music and dance programs to schools and community groups.

Musical Comedy Bender -- The Broadway musical "Xanadu," taking audiences back to 1980 California with its smash hit songs and Tony award nominee Douglas Carter Beane is now playing through Sunday, Jan. 17 at Keller Auditorium.

Live Jazz -- Every Friday and Saturday from 8 p.m. to 11 p.m., the Third Degrees Lounge at the River Place Hotel, 1510 S.W. Harbor Way. No cover or minimum purchase. For more information, visit pdxjazz.com.



Predators of the Serengeti -- Come hear the roar as the Oregon Zoo shows off its newest and most ambitious exhibit with three African lions and other animals that are home to the Serengeti.



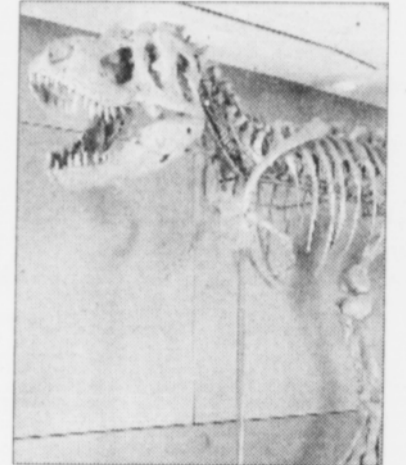
Rethink Afghanistan -- A full length film documentary regarding the ongoing war in Afghanistan, presented by the National Lawyers Guild and Portland Peaceful Response, Thursday, Jan. 14 at 7 p.m. at the Clinton Street Theater, Southeast 26th Avenue and Clinton Street.



Mel Brown Live -- Portland jazz giant Mel Brown performs at Salty's on the Columbia every Friday and Saturday night. Known as the "Gentleman of Jazz," Brown has a career spanning over 40 years.

Normal Sylvester -- The Normal Sylvester Band plays Friday, Jan. 15 at Halibut's; Saturday, Jan. 16 at the Cascade in Vancouver; Friday, Jan. 22 at Domenic's in Milwaukie; and Saturday, Jan. 23 at Clyde's.

Samson the T. Rex -- A magnificent 39-foot-long Tyrannosaurus rex skeleton, one of the most fearsome carnivores ever to walk the face of the earth is on display at OMSI. The 66-million-year-old fossil known as Samson is one of the most complete Tyrannosaurus rex specimens in existence.



Music Millennium Free Shows -- The Music Millennium, 3158 E. Burnside, hosts in-house live performances. Enjoy free music and the opportunity to meet artists. Call 503-231-8926 for a schedule.

OMSI After Dark -- OMSI After Dark is a night at the museum for the 21 and over crowd filled with food, drink and science fun; \$10 fee. For more information, call 503-797-4000 or visit omsi.edu.

Food and Entertainment -- Sliders Grill, 3011 N. Lombard, features an eclectic assortment of performers on the main stage, accompanied by delicious food. Call 5459-4488 for more information.

BUSINESS *Directory*

for ad placement contact
Mark Washington
at 503-288-0033

JBOYDS



Picture Perfect
Lawn Landscape

PH (503) 970-5743
Licensed and Bonded
LCB 6165

James Boyd
3535 N. Vancouver Ave.
Portland, OR 97218

State Farm®
Providing Insurance and Financial Services
Home Office, Bloomington, Illinois 61710

Ernest J. Hill, Jr.
Agent
4946 N. Vancouver Avenue, Portland, OR 97217
503 286 1103 Fax 503 286 1146
ernie.hill.h5mb@statefarm.com
24 Hour Good Neighbor Service®

**INTERSTATE
DENTAL CLINIC**

5835 N Interstate Ave,
Portland, OR 97217

watch video at <http://www.yellowpages.com/info-2668891/Interstate-Dental-Clinic>



(503) 946-6273
edwardward2@aol.com

website:
www.cosmeticdentalportland.com/Default.htm

Gerald M. Chase
Attorney at Law

Chase & Weil, LLP
621 S.W. Alder St.,
Suite 600
Portland, Oregon
97205-3621

Tel: (503) 294-1414
Fax: (503) 294-1455

Advertise
with diversity
in
The Portland
Observer
Call 503-288-0033
ads@portlandobserver.com

Horace S. Simpson
Barber



For an appointment, call:
(503) 734-5312

222 N. Killingsworth Ave.
Portland, Or 97211

upscalebarberspa@yahoo.com

Double J Tires
New & Used Tires
Overstock & Used Tires
\$15 & up PRICED TO SELL
All tires mounted & blanded on the car, out the door - no additives.
Free stock wheels w/ purchase of any new or used tire-limited to stock on hand 30 years in business

2 locations to Serve You
6841 NE MLK, Portland
503-283-9437
4510 SE 52nd & Holgate
503-771-1834

BOANERGES GROUP LLC

Sharon Maxwell-Hendricks
General Manager



Phone: 503-281-0224
Fax: 503-284-4419
shamaxhend@acninc.net
wbe / esb / dbe # 3145
ccb# 159587 Wa Lic # boaneg*934jt

4134 N. Vancouver Ave, Suite 400E
P.O. Box 11115, Portland, OR 97211

State Farm®
Providing Insurance and Financial Services
Home Office, Bloomington, Illinois 61710

Michael E Harper
Agent




We moved to our new location:
9713 S.W. Capitol, Portland, OR
503-221-3050
Fax 503-227-8757

PAN
graphics

Affordable
Design and
Business Support

Paul A. Neufeldt
503-875-1695
panndrw@yahoo.com