

ENTERTAINMENT  
GUIDE

**Face Your Fears** — Visitors to the Oregon Museum of Science and Industry (OMSI) will get their heart pumping and palms sweaty in the interactive exhibit *Scream! The Science of Fear*, now showing through Sunday, Jan. 3.



**Japanese Gardens New Year** — The Portland Japanese Garden will celebrate O-Shogatsu (New Year's) with a special family day in the garden's Pavilion on Sunday, Jan. 10, with tea and light refreshments, traditional New Year's activities for kids and calligraphy writing.

**Totally Gospel II** — Peninsula Open Bible Church, 8225 N. Peninsula, hosts all styles of gospel, country, and contemporary music with host Riny Horst on Friday, Feb. 5 and every other month on the first Friday night from 7:30 p.m. to 9:30 p.m. For more information, call 503-335-3132.

**Cultures of the African Diaspora** — Ghanaian music and dance concert, Friday, Jan. 15 at 7:30 p.m. at da Vinci Arts Middle School, 2508 N.W. Everett St. Fundraiser for Anai, a non-profit that offers innovative African arts, folkloric music and dance programs to schools and community groups.

**From Farm to Cup** — The World Forestry Center at Washington Park takes a look at the powerful influence of coffee on environments, human cultures and economies worldwide in a special traveling exhibit "Coffee: The World in Your Cup," running now through Jan. 10.



**Live Jazz** — Every Friday and Saturday from 8 p.m. to 11 p.m., the Third Degrees Lounge at the River Place Hotel, 1510 S.W. Harbor Way. No cover or minimum purchase. For more information, visit [pdxjazz.com](http://pdxjazz.com).

**Predators of the Serengeti** — Come hear the roar as the Oregon Zoo shows off its newest and most ambitious exhibit with three African lions and other animals that are home to the Serengeti.

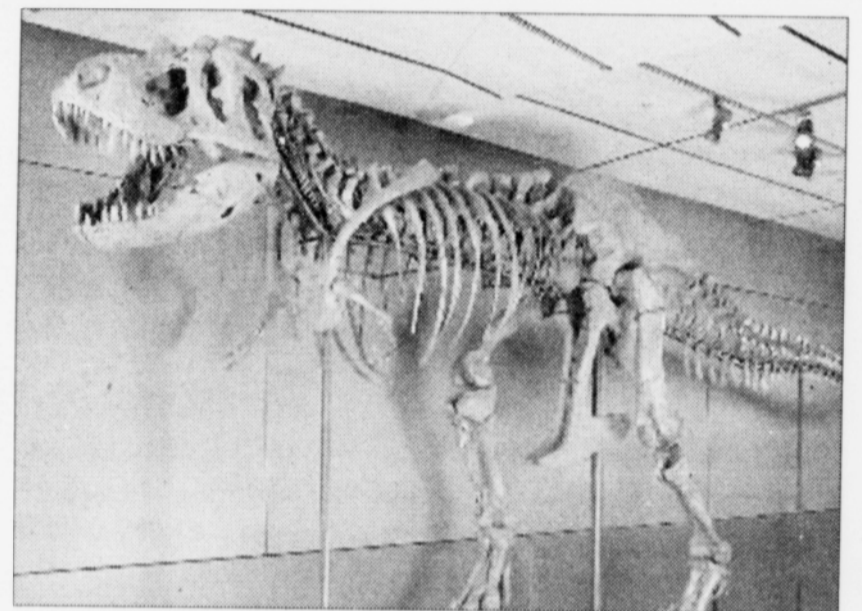
**Music Millennium Free Shows** — The Music Millennium, 3158 E. Burnside, hosts in-house live performances. Enjoy free music and the opportunity to meet artists. Call 503-231-8926 for a schedule.

**OMSI After Dark** — OMSI After Dark is a night at

the museum for the 21 and over crowd filled with food, drink and science fun; \$10 fee. For more information, call 503-797-4000 or visit [omsi.edu](http://omsi.edu).

**Food and Entertainment** — Sliders Grill, 3011 N. Lombard, features an eclectic assortment of performers on the main stage, accompanied by delicious food. Call 5459-4488 for more information.

**Samson the T. Rex** — A magnificent 39-foot-long *Tyrannosaurus rex* skeleton, one of the most fearsome carnivores ever to walk the face of the earth is on display at OMSI. The 66-million-year-old fossil known as Samson is one of the most complete *Tyrannosaurus rex* specimens in existence.



BUSINESS *Directory*

for ad placement contact  
Mark Washington  
at 503-288-0033

**JBOYDS**

Picture Perfect  
Lawn Landscape

PH (503) 970-5743  
Licensed and Bonded  
LCB 6165

**James Boyd**  
3535 N. Vancouver Ave.  
Portland, OR 97218

State Farm®  
Providing Insurance and Financial Services  
Home Office, Bloomington, Illinois 61710

**Ernest J. Hill, Jr.**

Agent  
4946 N. Vancouver Avenue, Portland, OR 97217  
503 286 1103 Fax 503 286 1146  
[ernie.hill.h5mb@statefarm.com](mailto:ernie.hill.h5mb@statefarm.com)  
24 Hour Good Neighbor Service®



INTERSTATE  
DENTAL CLINIC

5835 N Interstate Ave,  
Portland, OR 97217

watch video at <http://www.yellowpages.com/info-2668891/Interstate-Dental-Clinic>

(503) 946-6273  
edwardward2@aol.com



website:  
[www.cosmeticdentalportland.com/Default.htm](http://www.cosmeticdentalportland.com/Default.htm)

Gerald M.  
Chase  
Attorney at Law

Chase & Weil, LLP  
621 S.W. Alder St.,  
Suite 600  
Portland, Oregon  
97205-3621

Tel: (503) 294-1414  
Fax: (503) 294-1455

Advertise  
with diversity

in

The Portland  
Observer

Call 503-288-0033  
[ads@portlandobserver.com](mailto:ads@portlandobserver.com)

**Horace S. Simpson**

Barber



For an appointment, call:  
(503) 734-5312

222 N. Killingsworth Ave.  
Portland, Or 97211

[upscalebarberspa@yahoo.com](mailto:upscalebarberspa@yahoo.com)

**Double J Tires**

New & Used Tires

**Overstock & Used Tires**

\$15 & up PRICED TO SELL  
All tires mounted & blanded on the car, out the door - no additives.  
Free stock wheels w/ purchase of,  
any new or used tire-  
limited to stock on hand 30  
years in business

2 locations to Serve You

6841 NE MLK, Portland  
503-283-9437

4510 SE 52<sup>nd</sup> & Holgate  
503-771-1834



**Sharon Maxwell-Hendricks**  
General Manager

Phone: 503-281-0224  
Fax: 503-284-4419  
[shamaxhend@acninc.net](mailto:shamaxhend@acninc.net)  
wbe / esb / dbe # 3145  
ccb# 159587 Wa Lic #  
boaneg\*934jt  
4134 N. Vancouver Ave, Suite 400E  
P.O. Box 11115, Portland, OR 97211

State Farm®  
Providing Insurance and Financial Services  
Home Office, Bloomington, Illinois 61710

**Michael E Harper**



Agent



We moved to  
our new location:  
9713 S.W. Capitol, Portland, OR  
503-221-3050  
Fax 503-227-8757

**PAN**  
graphics

Affordable  
Design and  
Business Support

Paul A. Neufeldt  
503-875-1695  
[panndrw@yahoo.com](mailto:panndrw@yahoo.com)