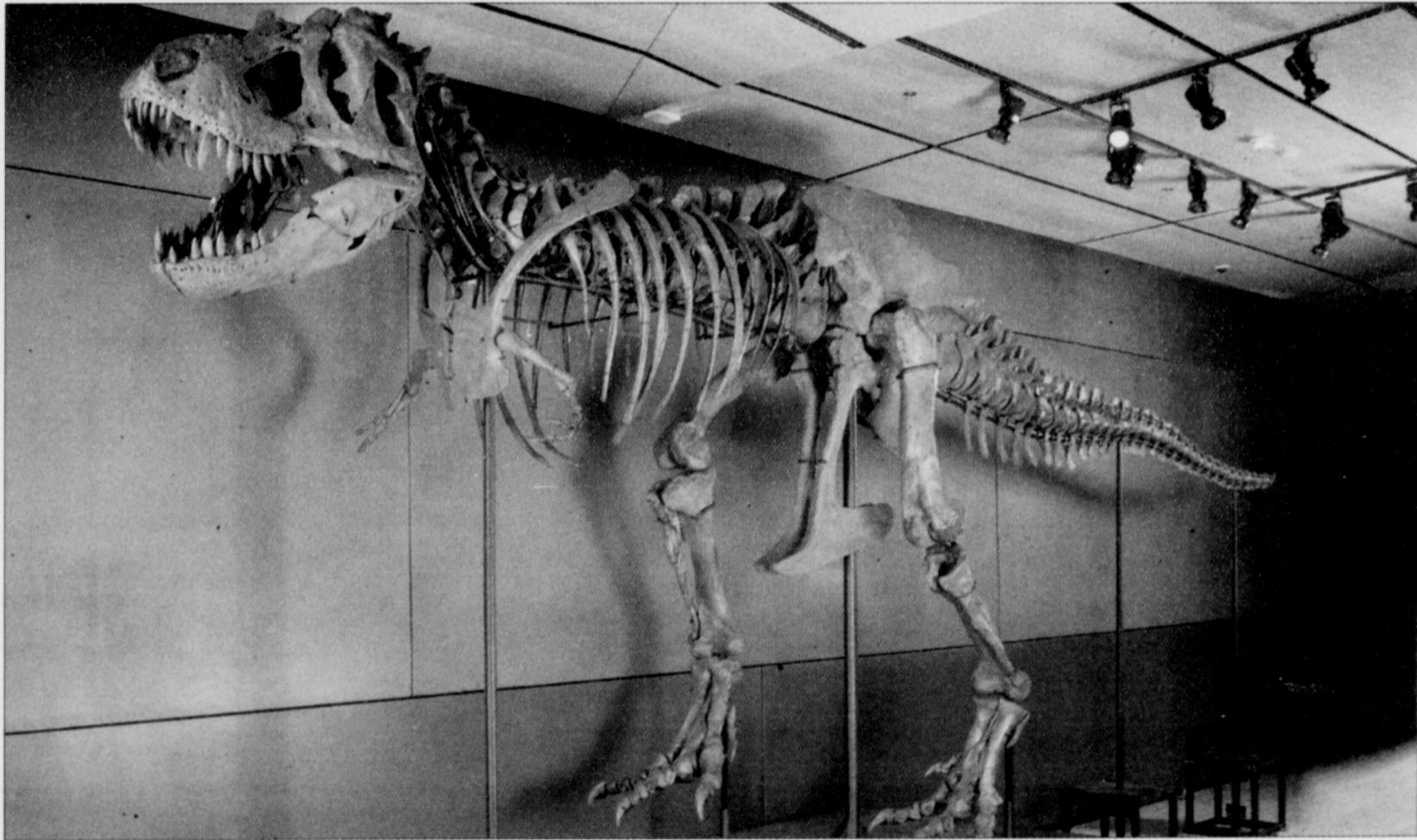


# Arts & ENTERTAINMENT



Real bones from one of the most complete T. Rex skeletons in the world is on display at the Oregon Museum of Science and Industry.

## Samson the T. Rex at OMSI

Fossil one of the most complete in existence

A magnificent 39-foot long fossil of the most fearsome carnivores ever to walk the face of the Earth is on display at the Oregon Museum of Science and Industry (OMSI).

The 66-million-year-old Tyrannosaurus rex skeleton known as Samson is one of the three most complete Tyrannosaurus rex specimens in existence.

Close to 60 percent of Samson's original bones, including its nearly complete skull will be on exhibit.

"We are honored that OMSI has been chosen to be the first museum in the world to host the mounted Samson," said OMSI president Nancy Stueber. "It is a truly unique and magnificent specimen that has opened new doors to scientific discovery about the life of the Tyrannosaurus rex. We're pleased to offer

visitors the rare opportunity to view its real bones up close."

Samson was discovered in South Dakota in 1987 and is one of three tyrannosaurs unearthed with more than 50 percent of their skeletal bones remaining."

In life, Samson measured approximately 40 feet in length and could have looked into a second story window. Its massive skull and powerful serrated teeth could have bitten through the leg bone of any of its peers.

Most likely a very skilled hunter with binocular color vision and an extremely sensitive sense of smell, this colossus, like other adults of the species, lived as an apex predator of the late Cretaceous Period.

Samson will be on display at OMSI through summer. For more information, visit [omsi.edu/samson](http://omsi.edu/samson).

## New Year's Eve at Aquariva

RING IN 2010 ON THE BEAUTIFUL WILLAMETTE RIVER

With the **NORMAN SYLVESTER BAND**  
featuring **LENANNE SYLVESTER**

0470 SW Hamilton Ct.  
Portland, OR. 97239

December 31ST 9:00pm ~ 1:00am

DINNER & SHOW: \$52 / person  
SHOW ONLY: \$15 / \$20 (at door)

For Reservations: 503-802-5850 / [www.aquarivaportland.com](http://www.aquarivaportland.com)

TAKE THE ELEVATOR HOME: AVALON HOTEL FROM \$139  
Hotel: 503-802-5800 / [www.avalonhotellandspa.com](http://www.avalonhotellandspa.com)

