



Shen Wei Dance Arts

White Bird presents the return of Shen Wei Dance Arts with two visionary works inspired by Tibet and China.

Arts & ENTERTAINMENT

White Bird presents the return of Shen Wei Dance Arts on Wednesday, Nov. 11 at 7:30 p.m. at the Arlene Schnitzer Concert Hall.

Choreographer, director, dancer, painter and designer, Shen Wei received worldwide exposure with his dazzling contribution to the 2008 Beijing Olympics Opening Ceremonies.

Born in Hunan, China and now based in New York City, Shen Wei creates hauntingly beautiful imagery as seen in his Rite of Spring that White Bird presented in 2005.

In the current production, Shen Wei's 13-member company will perform his stunning RE:I, based on Shen Wei's impressions of Tibet during his travels there - as well as his new RE:III, integrating images of the Old Silk Road with the "new" hyper-modern China that Shen Wei observed while there for the Olympics.

Comedian Gets Serious in *Precious*

(AP) -- Mo'Nique likes to laugh. A lot.

So the comedian knew she would be taking on a tough mental challenge when she decided to play the role of Mary Jones — the vicious, abusive mother in the critically acclaimed film "Precious: Based on the Novel 'Push' by Sapphire."

She was up to the task for most of the movie. But she admits that there was one scene that required so much hate that she almost fell apart.

"There was one time that I got scared because I didn't think that my mind or



Mo'Nique

heart could go to that place," the 40-year-old said.

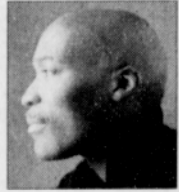
But she pulled it off with a portrayal so searing, so devastating, that she's being touted as a possible Oscar nominee.

The dark urban drama, which debuted at January's Sundance

Film Festival, won both the top jury prize and the award as the audience's favorite film. It opened in U.S. cinemas on Friday.

The Lee Daniels-directed film — which also features Mariah Carey, Paula Patton and Lenny Kravitz — is being backed by Oprah Winfrey and Tyler Perry, who serve as executive producers.

We Live Here -- Jazz musician Darrell Grant, singer Kabir Green, writer Lynn Darroch and other local artists present a night of music, words, images and stories, Friday, Nov. 20 from 8 p.m. 11 p.m. at Airplay Café, 701 E. Burnside St. \$10 cover.



Day of the Dead Encore -- Miracle Theater Group, 525 S.E. Stark St., has scheduled an additional performance of *Canta y no llores*, this year's celebration of Day of the Dead/The final presentation takes place for Sunday, Nov. 15 at 7 p.m.



Triumph of Love -- Philip Glass, the most renowned and often-produced opera composer of our time celebrates the potency of love and loyalty in *Orpheus* with shows Saturday, Nov. 12 and Monday, Nov. 14 at Keller Auditorium.



Everclear Benefit Concert -- Everclear will wrap up its 2009 "In a Different Light" tour with a benefit concert to support southeast Portland's St. Francis Dining Hall, Thursday, Nov. 19 at McMenamins Crystal Ballroom, 1332 W. Burnside St. Tickets are on sale through Ticketmaster and the Crystal Ballroom box office.

ENTERTAINMENT GUIDE

Salmon Festival -- Mt. Hood Community College and the U.S. Forest Service hold a Salmon Festival at Multnomah Falls, Sunday, Nov. 15 from 10 a.m. to 4 p.m. A number of planned activities for children will focus on environmental themes. The event is free and open to the public.

Norman Sylvester Band -- Local jazz great Norman Sylvester performs Friday, Nov. 13 at 8 p.m. at Tillicum in Beaverton; and Thursday, Nov. 19 at 9 p.m. at the 720 Nightclub on Hawthorne/ For a complete schedule visit normansylvester.com.

Live Jazz -- Every Friday and Saturday from 8 p.m. to 11 p.m., the Third Degrees Lounge at the RiverPlace Hotel, 1510 S.W. Harbor Way. No cover or minimum purchase. For more information, visit pdxjazz.com.

Words and Images -- The Portland Art Museum examines the relationship between word and image in prints over the course of more than 500 years in an exhibit on display through Nov. 29.



Predators of the Serengeti -- Come hear the roar as the Oregon Zoo shows off its newest and most ambitious exhibit with three African lions and other animals that are home to the Serengeti.

Ben Franklin: Unplugged -- Josh

Kornbluth's comic autobiography was inspired when the monologist and fringe theater performer looked into his bathroom mirror and discovered a startling resemblance to Ben Franklin. The comic production runs through Nov. 22 at Portland Center Stage.

Battle to Vote -- The Clark County Historical Museum, 1511 Main St. in Vancouver, hosts a free women's suffrage exhibit through the end of the year. Washington was an early leader in giving women the right to vote.

Music Millennium Free Shows -- The Music Millennium, 3158 E. Burnside, hosts in-house live performances. Enjoy free music and the opportunity to meet artists. Call 503-231-8926 for a schedule.

OMSI After Dark -- OMSI After Dark is a night at the museum for the 21 and over crowd filled with food, drink and science fun; \$10 fee. For more information, call 503-797-4000 or visit omsi.edu.

Food and Entertainment -- Sliders Grill, 3011 N. Lombard, features an eclectic assortment of performers on the main stage, accompanied by delicious food. Call 5459-4488 for more information.

Totally Gospel II -- Peninsula Open Bible Church, 8225 N. Peninsula, hosts all styles of gospel, country, and contemporary music with host Riny Horst each Friday night from 7:30 p.m. to 9:30 p.m. For more information, call 503-335-3132.

To Place Your Classified Advertisement
 Contact: Kathy Linder
 Phone: 503-288-0033
 Fax: 503-288-0015
 e-mail: classifieds@portlandobserver.com

Cherry Sprout Produce
 (Formerly Big City Produce)
 722 N. Sumner St.
 Hours: Mon.-Sat. 9-8 - Sun. 10-7
Take 15% off your purchase of \$10 or more!
Everyday special 2 dozen Fry & Try AA Eggs for \$3.50
GREENS! YAMS!

Reach Community Development is now accepting applications for the following properties:
Station Place Tower • 503-546-4646
 (1BR at \$817*/month)
Floyd Light Apartments • 503-209-0137
 (1BR at \$670*/month)
 *Income Restrictions Apply.
 Please call or visit our website at www.reachcdc.org for more detailed information.
 Equal Housing Opportunity

BUSINESS Directory

for ad placement contact Mark Washington at 503-288-0033

State Farm®
 Providing Insurance and Financial Services
 Home Office, Bloomington, Illinois 61710

Ernest J. Hill, Jr.
 Agent
 4946 N. Vancouver Avenue, Portland, OR 97217
 503 286 1103 Fax 503 286 1146
 ernie.hill.hfmb@statefarm.com
 24 Hour Good Neighbor Service®

INTERSTATE DENTAL CLINIC
 5835 N Interstate Ave, Portland, OR 97217
 watch video at <http://www.yellowpages.com/>
 info-2668891/Interstate-Dental-Clinic

(503) 946-6273
 edwardward2@aol.com
 website: www.cosmeticdentalportland.com/Default.htm

JBOYDS
 Picture Perfect Lawn Landscape

PH (503) 970-5743
 Licensed and Bonded
 LCB 6165

JAMES BOYD
 3535 N. Vancouver Ave.
 Portland, OR 97218

HORACE S. SIMPSON
 Barber

For an appointment, call:
 (503) 734-5312

222 N. Killingsworth Ave.
 Portland, Or 97211

upscalebarberspa@yahoo.com

BOANERGES GROUP LLC

Sharon Maxwell-Hendricks
 General Manager
 Phone: 503-281-0224
 Fax: 503-284-4419
shamaxhend@acninc.net

WBE / ESB / MBE / DBE # 3145 • CCB# 159587 • WA LIC # BOANEG034JT
 4134 N. Vancouver Ave, Suite 400E PO. Box 11115. Portland, OR 97211

State Farm®
 Providing Insurance and Financial Services
 Home Office, Bloomington, Illinois 61710

Michael E Harper Agent

We moved to our new location at:
 9713 S.W. Capitol, Portland, OR
 503-221-3050
 Fax 503-227-8757