

Arts & ENTERTAINMENT

Northwest Explorers and Native Peoples

Confluence Project exhibit

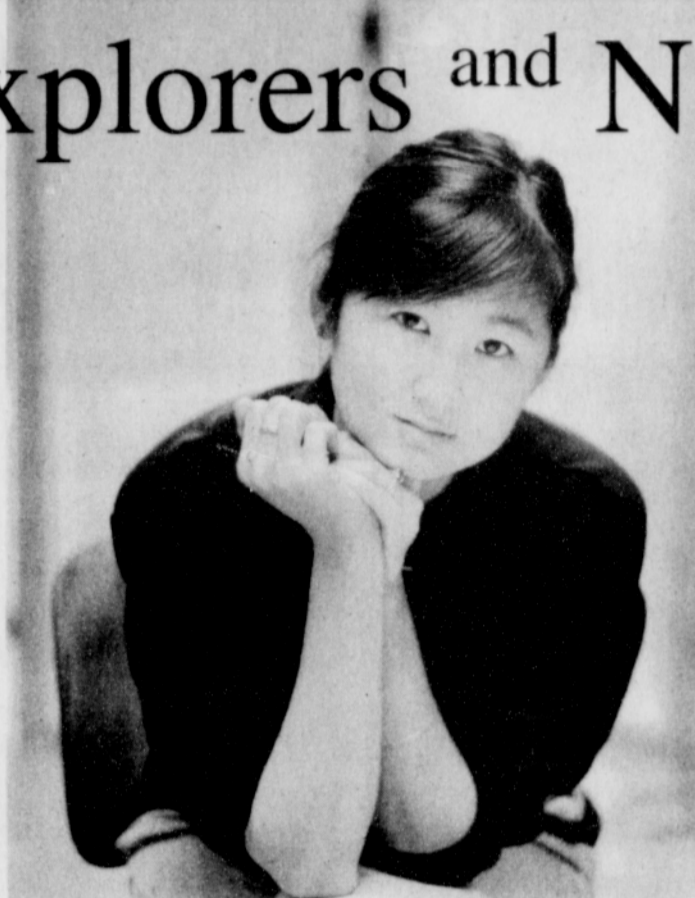
The public is invited to visit a very special exhibition of the designs and models for the Confluence Project by world-renowned artist and architect Maya Lin.

The exhibition coincides with the public dedications of the Confluence Project's two recently completed major public art, the Vancouver Land Bridge near the Fort Vancouver National Historic Site and the Bird Blind on the Sandy River Delta, near Troutdale.

The exhibit is free to the public and will be open 9 a.m. to 5 p.m., Monday through Friday, at the American Institute of Architects Gallery, 403 N.W. 11th Ave. at Flanders Street in Portland's Pearl District.

Early on in conceiving these designs for the Confluence Project, Maya Lin said, "It will be as if we are holding up a mirror to the Lewis and Clark story."

Visitors will have the opportunity to experience Maya Lin's mastery up close through scaled models and drawings. This special exhibit allows insight into the artist's unique



approach for this exceptionally large public art project. The work integrates environmental concerns and history, with sensitivity to the tremendous changes the journey of Lewis and Clark brought to Native Americans and their homelands.

"We are so happy to be able

to show everyone these wonderful designs for our several sites. I hope the exhibition will make everyone want to visit them all, from the Idaho border to the Pacific Ocean, and back," said Jane Jacobsen, Confluence Project executive director.

The Land Bridge and the Bird Blind, both opening officially to the public on Saturday, Aug. 23, are the second and third of seven planned sites comprising the entire Confluence Project.

Details about all these events and the project's ambitious work are available at confluenceproject.org.

World-renowned artist and architect Maya Lin tells the story of the Northwest through a series of art works known as the Confluence Project.

Record Producer Helped Shape R&B

Worked with Aretha Franklin, Ray Charles and other greats

(AP) -- Legendary record producer Jerry Wexler, who helped shape R&B music with influential recordings of Aretha Franklin, Ray Charles and other greats, is being remembered after his death last Friday at age 91.

Wexler earned his reputation as a music industry giant while a partner at Atlantic Records. Atlantic provided an outlet for the groundbreaking work of African-American performers in the 1950s and '60s. Later, it was a home to rock icons like Led Zeppelin and The Rolling Stones. He later helped Bob Dylan win his first Grammy by producing his 1979 "Slow Train Coming" album.

Wexler helped boost the careers of both the "King of Soul," Charles, and the "Queen of Soul,"

Franklin. Wilson Pickett, Solomon Burke and Percy Sledge were among the other R&B greats who benefited from Wexler's deft recording touch. He also produced Dusty Springfield's classic "Dusty in Memphis," considered a masterpiece of "blue-eyed" soul.

Among the standards produced by Wexler: Franklin's "Respect," a dazzling, feminist reworking of an Otis Redding song; Sledge's deep ballad "When a Man Loves a Woman" and Pickett's "In the Midnight Hour," with a horn vamp inspired by Wexler's admittedly rhythmless dancing.

Wexler was named to the Rock and Roll Hall of Fame in 1987.

In the studio, Wexler was a hands-on producer. Once, dur-



Legendary R&B record producer Jerry Wexler in 1979. (AP Photo)

ing a session with Charles, the tambourine player was off the beat. Wexler, in his award-winning autobiography, recalled grabbing the instrument and playing it himself.

"Who's that?" asked Charles. "Me," Wexler told the blind

singer. "You got it, baby!" Charles said.

Wexler produced 16 albums and numerous hit singles for Franklin, who switched to Atlantic in the mid-1960s and rediscovered her gospel roots after several unhappy years singing show tunes for Columbia. "When it came to the studio, you could say the two of us were joined at the hip," he once said.

Wexler was the quintessential Jewish street kid who found a home in black music. He was born in 1917 in the Washington Heights section of Manhattan, just north of Harlem. He didn't take to school, preferring to hang out at places like Artie's Pool Room on 181st Street.

In his teens, he began haunting Harlem's jazz clubs and record stores, developing a life-long passion for jazz and blues.

One Night in Frogtown

Multicultural children's book published

Oregon Coast resident and Emmy Award-winning author and composer Philip Pelletier has joined forces with Portland illustrator Verne Lindner to create a story of cultural diversity told through music in a new children's book-with-CD, One Night in Frogtown.

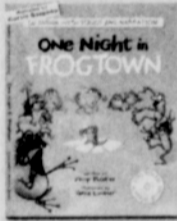
Featuring Portland talents Curtis Salgado, Linda Hornbuckle, Andy Stokes, and

more, One Night in Frogtown brings together classical jazz, R&B, and hip-hop performers to present a heartwarming, amphibious allegory — drumming, singing, rapping, and bopping the values of cultural diversity.

Frogtown is equally amusing to adults as well, especially with its all-star northwest talent lineup.

Pelletier will present a free all-ages reading and singing on Saturday, Aug. 28 at 11 a.m. at the 7 Corners New Seasons Market, 1954 S.E. Division St.

For more information about One Night in Frogtown, visit frogtowncentral.com.



Finish Line Automotive, LLC

where honesty and quality matter

Jason Sharp

1033 NE 82nd Ave
Portland, OR 97220

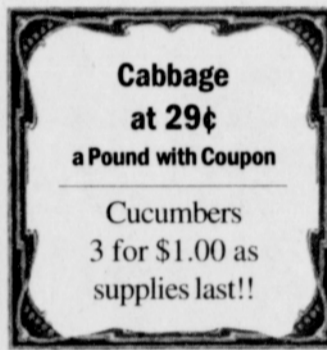
Phone: 503-254-1216
FAX: 503-261-7361
E-mail: Finishlineauto@aol.com

State Farm®
Providing Insurance and Financial Services
Home Office, Bloomington, Illinois 61710



Ernest J. Hill, Jr.

Agent
4946 N. Vancouver Avenue, Portland, OR 97217
503-286-1103 Fax 503-286-1146
ernie.hill@statefarm.com
24 Hour Good Neighbor Service®



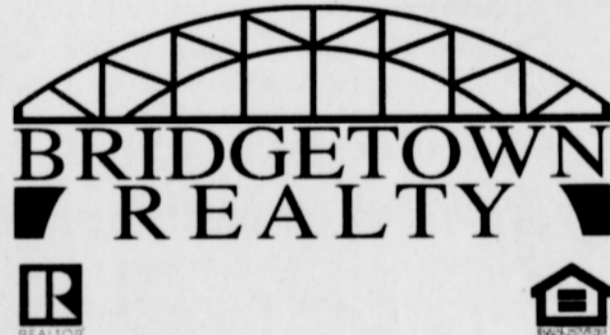
722 N. Sumner at Albina, Portland, OR 97217 • Expires 8/6/08
503-445-4959 • Mon-Sat 9am-7pm • Sun 10am-6pm

Michael Tillery Broker

503.975.8004

michael@bridgetownrealty.com

Please call me, your neighborhood specialist, for any of your Real Estate needs. My success is built on a commitment to quality service.



NORTHWEST VOICE OF CHRIST COMMUNITY CHURCH

Bishop H.L. Hodge, Ph.D.
Pastor/Teacher/Revivalist



What: "The Voice Speaks"

A Different Location

Where: Now at Emmanuel COGICU
4800 NE 30th Avenue, Portland, OR 97211

When: Sundays 8:00 A.M. Worship Service

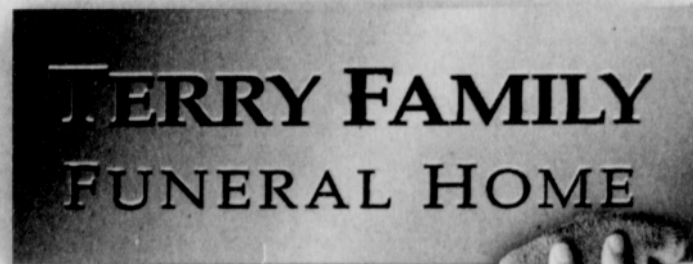
Wednesdays 7:00 P.M. Bible Study

Bishop Hodge and Congregation invite everyone to join us at our appointment with Jesus.

We Reach, Teach, & Preach in Jesus' Name!!!

To inquire about our Training Ministry call 503-863-6545
or email: hodgehspks@msn.com

It's not your standard funeral home...
it's the *new* standard in funeral homes.



In a business where things seemingly stay the same, a change has taken place. A change that may raise the bar on the level of service a family can experience from a funeral home.

You see, when we went into business we aspired to be so far and away the best that a new level of excellence was to be created. We would like you to know that we've achieved our goal.



2337 N Williams Ave
(503) 249-1788 • www.terryfamilyfuneralhome.com

IT'S HAPPENING EVERY SUNDAY AT MATT DISHMAN COMMUNITY CENTER

FREE SOUP & SALAD BAR @ 2PM
COMMUNITY CHURCH SERVICE @ 3PM

SPONSORED BY

ROYAL PRIESTHOOD
MINISTRIES

IN DISHMAN'S AUDITORIUM
77 NE KNOTT

WWW.ROYALPM.ORG



Pas. Kevin Jenkins



Sis. Patrina Jenkins

EVERYONE IS WELCOME!!! JUST COME AS YOU ARE!!!
ENJOY GOOD FOOD, GOOD MUSIC AND GOOD LESSONS

Advertise with diversity in *The Portland Observer*
Call 503-288-0033 ads@portlandobserver.com