

# CLASSIFIEDS

## Portland State University Area Coordinator, Residence Life

Portland State University Residence Life is seeking one Area Coordinator for a full-time, live-in, fixed-term, 12-month unclassified, unrepresented, overtime-exempt appointment. Minimum qualifications are: Bachelors degree and one year of successful experience in Housing/Residence Life and student government within housing. Prior experience and knowledge of judicial affairs, student and leadership development, budget management, and collaborative special event planning preferred. Ability to relate well to faculty and articulate effectively the institution's mission and priorities, as well as proven track record in bridging academic and student affairs with the implementation of new initiatives and programs. For complete position description please visit [www.hrc.pdx.edu](http://www.hrc.pdx.edu). The position will remain open until finalists are identified. Screening of applications will begin April 30, 2008.

Portland State University is an Affirmative Action/Equal Opportunity Institution and, in keeping with the President's diversity initiative, welcomes applications from diverse candidates and candidates who support diversity.

## OREGON ASSOCIATION OF MINORITY ENTREPRENEURS (OAME) CONFERENCE & TRADE SHOW May 8th, 2008 10:00am - 3:00pm OR Convention Center

Register Early to Assure Your  
Company Will Be Included!

Do not miss this fantastic opportunity to reserve exhibit spaces in the 20TH Annual Conference and Luncheon and Trade Show at the Oregon Convention Center.

The OAME Trade Show is designed for purchasers/buyers from the Public and Private agencies to network with minority, women and small businesses. It is also an opportunity for minority, women and emerging small businesses to showcase their products and services and to network.

Register now!!! Take advantage of this great opportunity to promote your business and increase you're buying and selling options.

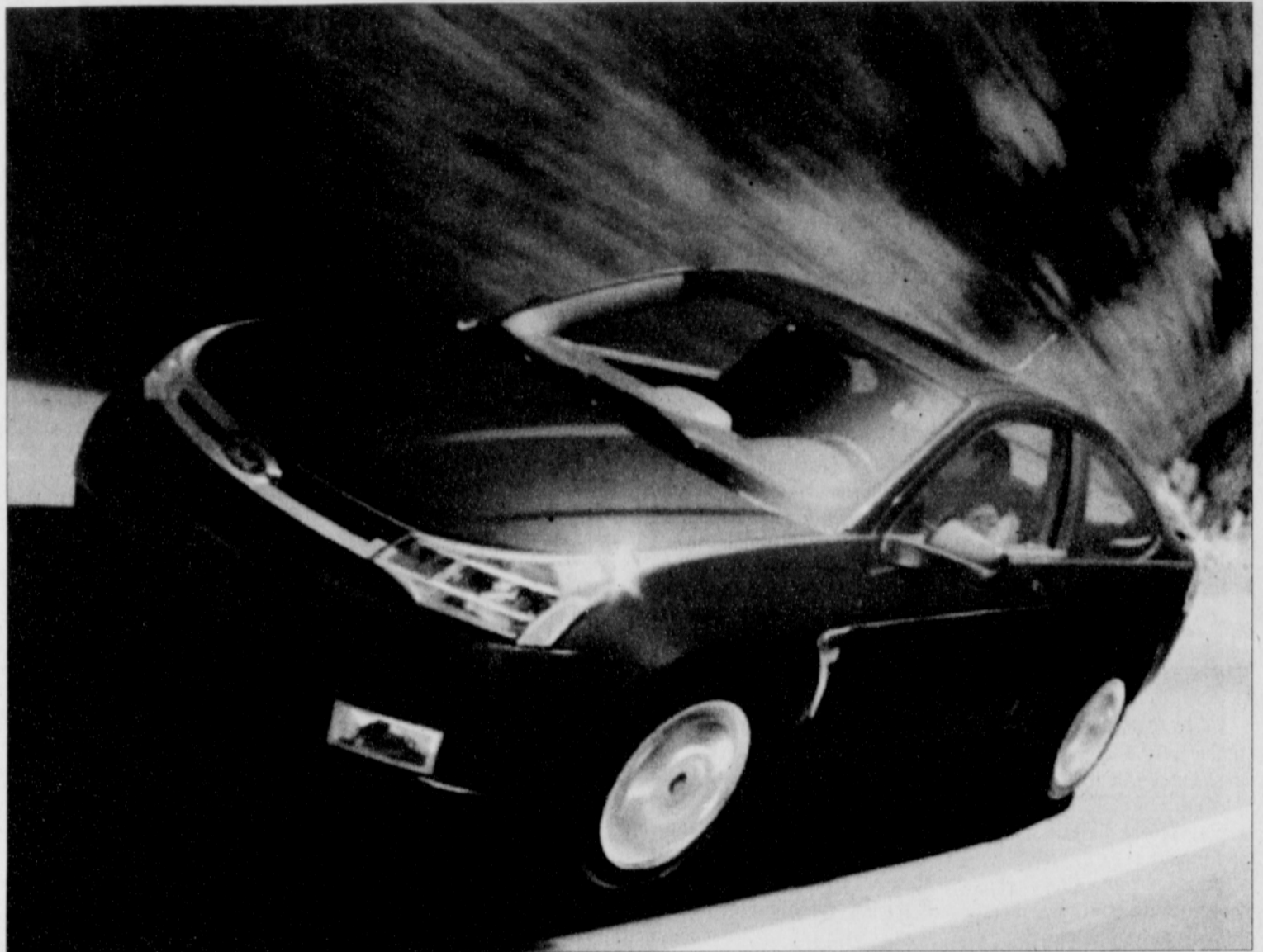
To reserve a booth or to purchase a luncheon ticket call the Oregon Association of Minority Entrepreneurs, (503) 249- 7744 or visit our website [www.oame.org](http://www.oame.org)

State Farm®  
Providing Insurance and Financial Services  
Home Office, Bloomington, Illinois 61710



### Ernest J. Hill, Jr.

Agent  
4946 N. Vancouver Avenue, Portland, OR 97217  
503 286 1103 Fax 503 286 1146  
[ernie.hill@statefarm.com](mailto:ernie.hill@statefarm.com)  
24 Hour Good Neighbor Service®



Specifications: 2.0-Liter, 4-Cylinder 140 hp @ 136 lb-ft. torque DOHC engine; 5-Speed manual transmission; 24-City 35-Highway MPG; \$20,050. MSRP.

# Portland Observer Auto Review

## 2008 Ford Focus 2 Door Coupe SES

### Focus connects MPG & MP3s

By KATHLEEN CARR

Transportation, recreation, communication. Three concepts, formerly distinct, but lately related, as the lines blur between work and play, home and away. Originally, cars were conveyances, something to get us from place to place. But increasingly,

### News and reviews on new motor vehicles

that view of auto as rolling appliance is being crowded out by a different take.

Ford has reworked the Focus for 2008, giving it new styling inside and out but maintaining the same platform and basic size. The new design shares a family look with Ford's other cars, distinguished by a two-bar version of the company's characteristic razor blade-like grille. The new, 2008 Ford Focus comes in four-door sedan and two-door coupe body styles. (Wagon and hatchback body styles are not offered.)

The big news for 2008 is the introduction of Ford's new SYNC™ entertainment and communications system. Developed with Microsoft, SYNC™ provides a hands-free link to cell phones and MP3 players through a series of voice commands. It recognizes your cell phone's address book. It can even read text messages to occupants through the stereo system. It's an amazing system and Ford appears to be ahead of everyone else in this area.

While expounding about the sound, we shouldn't lose sight of light. Another new addition to

the option sheet is programmable, LED powered ambient lighting. Lights in the cup holders and foot wells can be set to glow in seven different shades.

Newly standard on all Focus models are a standard input jack for your MP3 player, ice blue instrument backlighting, driver and front passenger side impact and side curtain air bags, air conditioning and a tire pressure monitoring system.

Ford has outfitted the Focus with its 140-hp, 2.0-liter Duratec four-cylinder for better fuel economy. With the manual transmission the Focus gets an EPA-rated 24/35 mpg City/Highway. With the automatic, it gets a healthy 24/33mpg. The 2.0-liter is competitive with most engines in this class. It has decent power for most needs, but passing maneuvers will require plenty of space.

The 2008 Ford Focus Coupe is a front-wheel drive vehicle with a traditional suspension setup for its class -- an independent MacPherson strut front with control blade rear suspension. The SES Coupe also has a rear stabilizer bar, an option for the mid-

range SE. All Focus Coupes have hydraulic gas pressurized shock absorbers, power rack-and-pinion steering and front-vented, rear-drum brakes. An anti-lock braking system with traction control is optional and recommended.

As in the past, the Focus handles well. We experienced lots of road feel with little body lean in corners while driving the top-line SES with it's a sportier suspension. That road feel can make the ride a bit harder than some might prefer, but it isn't harsh and we appreciated the handling response.

These are tough times for compact cars. Japanese makes have set the bar high for reliability and quality. And the increasingly tech savvy group of buyers who dominate the segment often have the proverbial champagne taste and a beer budget. Ford deserves credit for rolling their new SYNC™ feature all the way across their model line. It's given a good little car like the new Focus the means to attract attention in a segment full of fine competitors.

The 2008 Ford Focus SES, amps up the cool factor with the SYNC™ entertainment and communications system, ambient interior lighting, respectable fuel economy and a reasonable sticker price.



Dr. Billy R. Flowers

# THE SPINA COLUMN™

An ongoing series of questions and answers about America's natural healing profession.

## Part 14. Scoliosis Exam: The most important test your kids will take all year.

**Q:** My kids already get back-to-school check-ups. Why should I bother with yet another one?

**A:** Scoliosis, a lateral curvature of the spine, is one test probably not included in your children's back-to-school physical checkups. And yet, it is disturbingly common among teenage girls. If left untreated, scoliosis often leads to painful arthritis of the spine. But if the disorder is detected by age eight, before the adolescent growth spurt, there is better than 50% chance for complete recovery.

**Q:** How can I tell if my daughter might have scoliosis?

**A:** The most common visible symptom is very prominent shoulder blade higher than the other. However, the best check for scoliosis is an annual pre-school checkup with a Chiropractor. The one professional best

trained to detect and correct spinal disorders. It's a simple, painless, inexpensive procedure that can save your children years of discomfort and disfigurement later in life. For a scoliosis checkup, or for answers to any questions you might have about your own health, call us at the number below.

### Flowers' Chiropractic Office

2124 N.E. Hancock Street, Portland Oregon 97212  
**Phone: (503) 287-5504**

### Les Whitworth C.P.A.

5421 NE 33rd Avenue  
Portland, OR 97211  
Phone 503-295-1939 Cell 503-875-1630  
Fax 503-295-1065  
[www.leschitworthcpa.com](http://www.leschitworthcpa.com)  
email: [les@leschitworthcpa.com](mailto:les@leschitworthcpa.com)



Happy  
Birthday

**Marcus Branch**  
from your family

- Funerals
- Memorial Services
- Cremations
- Pre-arrangements

**TERRY**  
Family Funeral Home

*Portland's Newest Funeral Home  
Serving the Metropolitan Area.*

2337 N. Williams Ave.  
Portland, OR 97227

Available 24 hours a day **503-249-1788**

**HOST HOMES  
AT  
HELENSVIEW**

Two, three and four bedroom floor plans ranging from \$196,000 to \$243,000. Located on NE Killingsworth and 64th.

**Up to \$5,000 in closing cost assistance**

All HOST Homes at Helensview include front yard landscaping, kitchen appliances, gas fireplaces, tankless water heaters, window blinds, designed for LEED certification, ten year limited warranty, insulated vinyl windows and much more.

**LEED  
for HOMES**

**HOST  
Home Ownership**  
a Street at a Time

Alyssa Isenstein Krueger  
[www.hostdevelopment.com](http://www.hostdevelopment.com)

**503-724-6933**  
CCB# 71658